

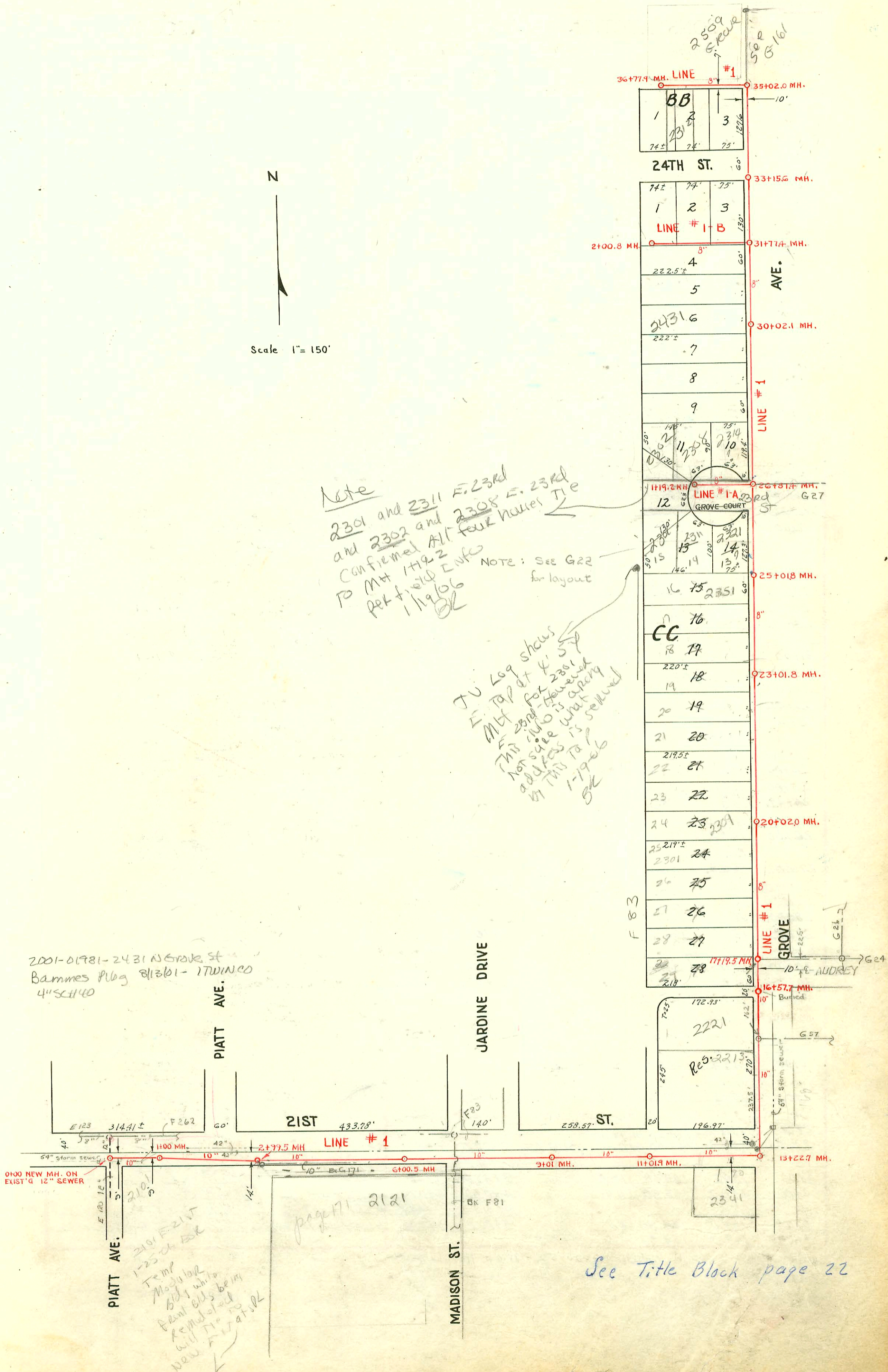
291
116

N
Scale 1" = 150'

Note
2301 and 2311 E. 23rd
and 2302 and 2308 E. 23rd
Confirmed All four houses Tie
to MH 1192
Per field info
119106
NOTE: See G22
for layout

JV Log shows
E Tap at 4' 5"
MH for 2301 - However
this who is asking
address what
in this tap is
1-1986
OK

2001-01981-2431 N Grove St
Bammes Plog 81361-170000
4" SCH 40



2101 E 21st
1-25 at BK
Temp
Modular
Bldg with
Panel Bldg being
removed
will tie to
new separator

See Title Block page 22

CONSTRUCTION RECORD

SERVICE RECORD

STATION	ELEVATION		Depth	MANHOLE	4-INCH "Y" BRANCHES		No. of Permit		House Number		DATE OF PERMITS	
	Ground	Grade			West	South East	North West	South East	North West	South East	North West	South East
0+00	124.3	114.60	9.7	0+00 New MH.								
1+00	124.5	114.80	9.7	1+00								
2+00	124.5	115.00	9.5									
2+99.5	125.0	115.20	9.8	2+99.5								
3+00												
4+00	125.1	115.40	9.7									
5+00	125.3	115.60	9.7									
6+00	125.7	115.80	9.9									
6+00.5	125.7	115.80	9.9	6+00.5								
7+00	126.6	116.00	10.6									
8+00	127.5	116.20	11.3									
9+00	128.8	116.40	12.4									
9+01				9+01								
10+00	129.6	116.60	13.0									
11+00												
11+01.9	130.2	116.80 in 120.10 out	13.4 10.1	11+01.9								
12+00	131.2	120.30	10.9									
13+00	132.4	120.50	11.9									
13+22.7	132.6 132.5	120.54 120.65	12.0 in 11.9 out	13+22.7								
14+00	133.4	120.80	12.6		14+46							
15+00	134.0	121.00	13.0		15+07		9371		2213		2-26-59	
16+00	134.6	121.20	13.4		15+96 L		C9987		N. Grove		2209-4-13-15-47	8-8-68
16+57.7	134.2	121.31	12.9	16+57.7	16+85.0							
17+00	133.8	121.40	12.4									
17+19.5	134.0	121.44 121.62	12.4 in 12.4 out	17+19.5	17+45.8		#2118		2223-55-27		8-13-52	
18+00	133.4	121.95	11.4		18+03.5		#2119		2223-55-37		8-13-52	
19+00	133.6	122.35	11.2		+61.0		#2150		2245-45-49		8-13-52	
20+00					19+24.8		#2151		2257-57-61		8-13-52	
20+02.0	134.2	122.75	11.5	20+02.0	20+40.5		#2152		2267-71-73		8-13-52	
21+00	135.5	123.15	12.3		21+64.5		#2153		2271-71-73		8-13-52	
22+00	136.7	123.55	13.1		22+22.5		95-60458-7		2307-11-13-R		5-9-95	
23+00	138.3	123.95	14.4		+77.9		#2154		2317-19-21		8-13-52	
23+01.8	138.3	123.95	14.4	23+01.8	23+41.4		#2155		2371-24-11		8-13-52	
24+00	139.5	124.35	15.2		24+01.3		#3319		2371-24-11		1-13-95	
25+00	139.0	124.75	14.2		24+60.1		#3320		2331 NR		10-15-58	
25+01.8	139.0	124.75	14.2	25+01.8	25+72.2							
26+00	137.2	125.15	12.1									
26+87.4	136.1	125.49 125.51	10.6 10.5	26+87.4	27+60.9							
27+00	136.5	125.55	10.9		28+66							
28+00	136.9	125.95	10.9		+78.0							
29+00	139.2	126.35	12.8		29+36.8							
30+00					+94.2							
30+02.1	142.0	126.75 130.00	152 in 12.0 out	30+02.1	30+58.2							
31+00	144.4	130.40	14.0		31+15.9							
31+77.4	146.4	130.70 134.54	15.7 in 11.9 out	31+77.4								
32+00	147.0	134.64	12.4									
33+00	149.0	135.04	13.9									
33+15.6	149.1	135.09	14.0	33+15.6								
34+00	149.5	135.44	14.1									
35+00												
35+02.0	148.9	135.96	12.9	35+02.0	35+14.0							
36+00	146.8	136.34	10.5		35+87		2000-01298	F6300	2312E	2320E	5/26/00	8-28-53
36+77.9	143.7	136.64	7.1	36+77.9	36+65		20956		24th	2509	6/24/00	
					Y NORTH	Y SOUTH			CRUVE			
#1-A	0+00	136.0	126.54	9.5	0+00=26+87.4 in line 1	0+77.0						
	1+00	133.3	126.92	6.3		0+80.0						
	1+18.2	133.9	127.00	6.9	1+18.2	4" Stub S.W.						
#1-B	0+00	146.0	131.02	15.0	0+00=31+77.4 in line #1	0+15.6						
	1+00	146.6	131.40	15.2		+89.7						
	2+00	143.6	131.80	11.8		1+65.5	#356		2301		3-15-54	
	2+00.8				2+00.8				E. 24th			

2003-01550 #3321 #3322 Taps at 2321+2316E. 23rd-Headgatch Pk. Co - 11-24-52 - 611603-Reddi - 4440 00
 #3323 to #3328 Taps - 2413, 2419, 2425, 2431, 2437, 2443 N. Grove - Headgatch Pk. Co - 11-24-52
 #3307 - 24 - 2320 E. 21st - 11-21-52 - Rep. Robertson, Inc. #6805 - tap - 2321 E. 23rd - 10-26-53 Reynolds Pk.
 #4053 - Tap into manhole - 2311 E. 21st - 2-6-53 Headgatch Pk. Co
 #4054 - Tap into manhole - 2412 E. 21st - 2-6-53 Headgatch Pk. Co
 #4055 - Tap - 2312 E. 21st - 2-6-53 Headgatch Pk. Co
 #4056 - Tap into manhole - 1119.2 for 2304 E. 21st - 2-6-53 Headgatch Pk. Co
 #3802 - Tap - 2301 E. 21st - 8-28-53 - Creekmoe Pk. Co
 #6301 - Tap - 2313 E. 24th - 8-28-53 - Creekmoe Pk. Co
 #6299 - Tap - 2328 E. 24th - 8-28-53 - Creekmoe Pk. Co
 #5206 - Tap - 2311 E. 24th - 5-14-53 - Headgatch Pk. Co
 #1847 - Tap - 2221 E. 21st - 8-27-54 - Home Pk. Co
 #902 - Tap - 2463 N. Grove - 5-11-54 - Harry Mann
 #5761 Tap - 2509 N. Grove - 3-7-55 - Simmons
 #6408 Tap - 2327 N. Grove - 3-20-58 - Reynolds
 #8363 Tap - 2331 N. Grove - Reynolds 10-15-58, 20755.8
 2000-01298-R-2312E-24th - Bourne - 4" SCH 40
 Tied back to clay file 57E MH 3677.4