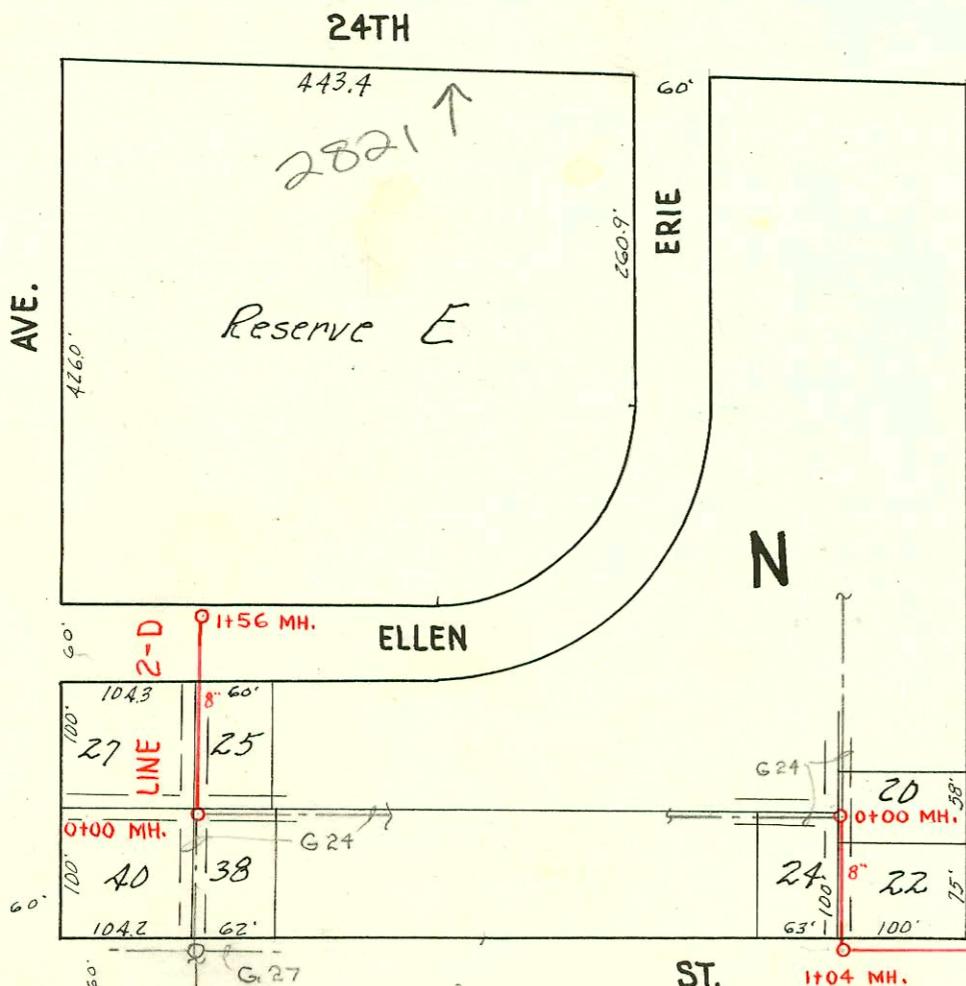
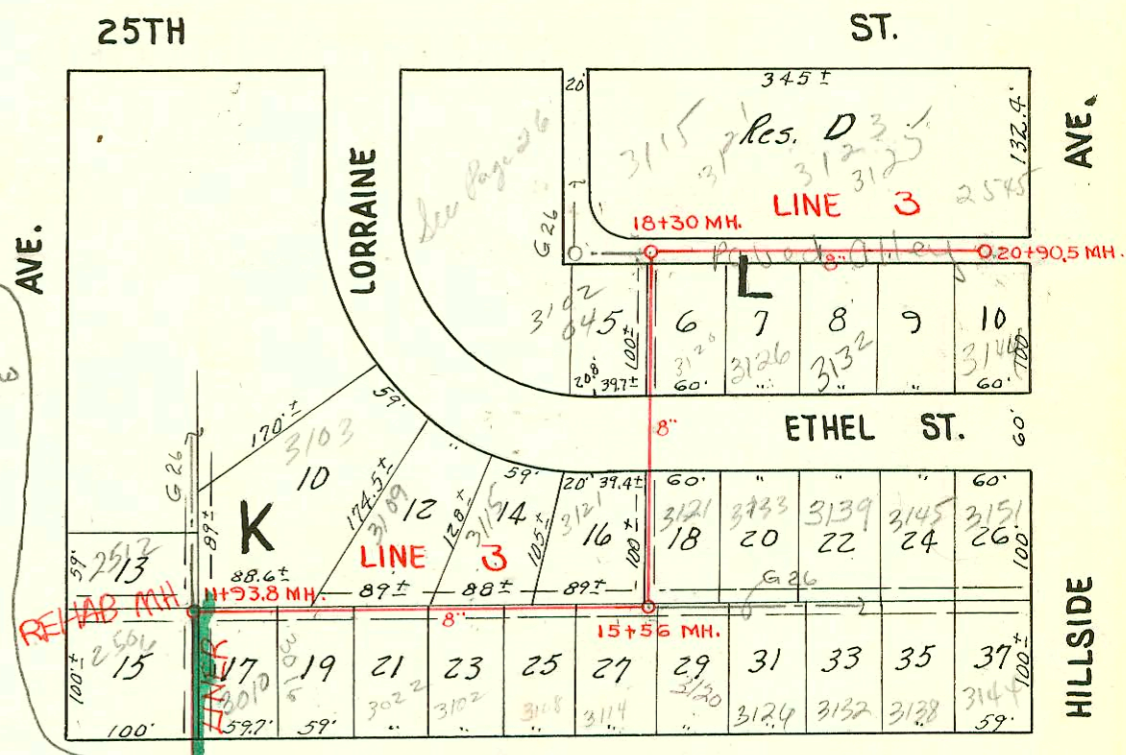


1994 SANITARY SEWER REHABILITATION PROGRAM - PHASE 1
 PROJ. NO. 468-82399 (623124)
 BUILT BY INSITUFORM PLAINS, INC.
 BOOKED 2-10-95 FROM AS BUILTS

RECONNECTIONS

STA.	ADDRESS	DIRECTION
11+73.9	2506 N. Chautauqua	West
10+04	2463 N. Lorraine	East
9+93	2462 N. Chautauqua	West
9+50.3	2457 N. Lorraine	East
9+45.4	2456 N. Chautauqua	West

2002-00436
 2002-00436 Tied to wye w/ donut 37' N of MH 8+98.5 (9+35.5) 1V45, 1V22, 4" sch 40 PVC, 14" fall - Glover Ent 315102
 2002-00436- 219102- Glover Ent- twinco, 4" sch 40 PVC, 14" fall, 1-4x3 wye for bldg add, tied back to clay tile 1' from main



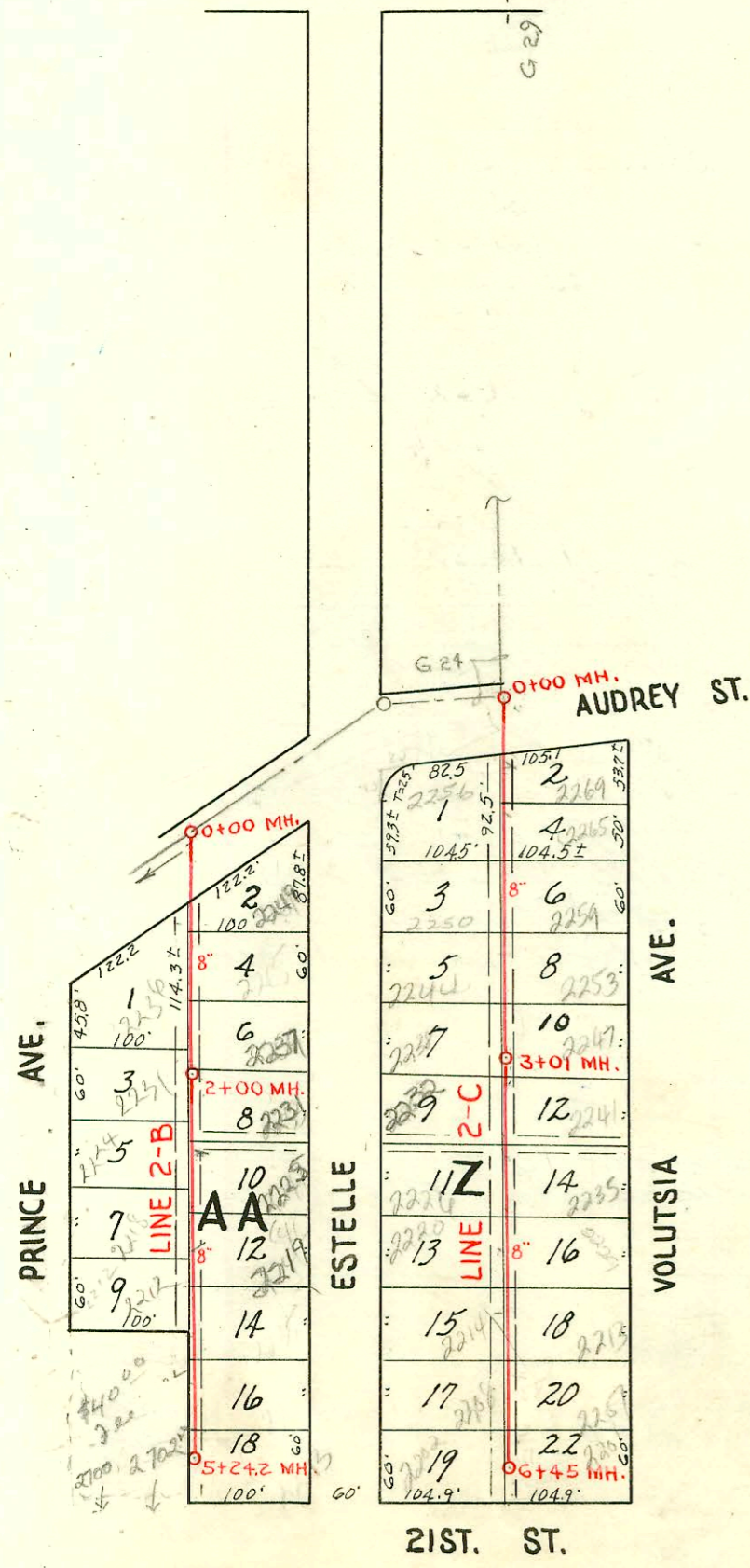
RECONNECTIONS

STA.	ADDRESS	DIRECTION
8+78.2	2451 N. Lorraine	East
8+78.7	2456 N. Chautauqua	West
8+20.2	2445 N. Lorraine	East
8+17.6	2444 N. Chautauqua	West
7+61.4	2438 N. Chautauqua	West
7+49.5	2439 N. Lorraine	East
7+04.5	2432 N. Chautauqua	West
6+97.4	2433 N. Lorraine	East
6+41.9	2426 N. Chautauqua	West
6+31.3	2425 N. Lorraine	East
5+82.1	2420 N. Chautauqua	West
5+71.7	2419 N. Lorraine	East
5+28.6	2414 N. Chautauqua	West
5+12.7	2413 N. Lorraine	East
4+69.2	2408 N. Chautauqua	West
4+53.8	2407 N. Lorraine	East
4+15.9	2402 N. Chautauqua	West
3+96.9	2401 N. Lorraine	East

1993 SANITARY SEWER REHABILITATION PROGRAM - PHASE 1
 PROJ. NO. 468-82348 (632000)
 BUILT BY INSITUFORM PLAINS INC.
 BOOKED 5-12-94 FROM AS BUILTS

Scale 1"=150'

- #12919 tap 3115 E 25th on McDonald 6-8-60 (MH 18730)
- #12920 tap 3121-23-25 E. 25th on McDonald 6-8-60 (19759.5)
- #15429 tap into MH. 1456-2841 E 24th on McDonald 4-5-62 - Repair
- JR # C41028 - 2235 N. Volusia 9-14-73 MH 3701.0 (4+17)
- 2000-00984 - 3144 E Ethel St. - Replaced 4' on low end after removing sewer cleaners cable (20+816) 4" sch 40 1 TWIN CO; 2V22 - EXISTING BLD SWR. (for addition to garage)
- 2001-01335 - 5/31/01 - 2450 N Chautauqua - Bowers - 4" sch 40 - Replace 5' upper end, 1 TWIN CO, 1H22
- 2001-01610 7/31/01 - 3108 E 24th St N - Floyd Plog - 4" sch 40 - installed wye into exist Bldg swr - 2 kickouts, 1 TWIN CO
- 2001-01618 - 2237 N Estelle - Roto - 4" sch 40 1 TWIN CO, 1H22 - Replace 5' on high end
- 2003-02550- 10/26/03 - 2821 E 24th N - Tri-state - 245H, 14" Combo, 1 TWIN CO, 1 cap, (line for remodel in Teachers Lounge) to existing 16" riser



NOTE: Rear yard easements are 8' in width.
 Side yard easements are 5' in width.
 Sewer runs 3' east or 3' South of Lot lines.

CONSTRUCTION RECORD

SERVICE RECORD

STATION	ELEVATION		Depth	MANHOLE	4-INCH "Y" BRANCHES		No. of Permit		House Number		DATE OF PERMITS			
	Ground	Grade			North West	South East	North West	South East	North West	South East	North West	South East	North West	South East
# 2-B 0+00	147.1	139.20	7.9	0+00 = 10+20 in Line #2	0+65.1	4" SCH 40 CD 0+62.1		482	2249 7.1.52			12-10-51 2-20-52		
1+00	147.2	139.60	7.6		1+85.2	1+45.2	#188		2230 2231			2-25-52		
2+00	150.11	140.00 in 143.00 out	10.1 7.1	2+00	4" PVC 40 2+53.0	2+12.7	#578 #787	#6060	2224 2225			1-14-52 2-25-52		
3+00	153.2	143.40	9.8		4" SCH 40 CD 3+07.8	2+65.0	#787 #186	#185	2225 2218			2-25-52 2-25-52		
4+00	155.0	143.80	11.2		3+69.0	3+26.1	#184	#184	2219 2212			6-16-71 5-10-52		
5+00	155.4	144.20	11.2		4+98.7	3+87.2 4+45.6	#496 - sealed off #496	C65761	2702 E 21st			3-20-52		
5+24.2	155.4	144.29	11.1	5+24.2		5+05.7	#3779		2702 E 21st			7-12-65		
# 2-C 0+00	149.1	140.50	8.6	0+00 = 13+20 in Line #2	0+60.4	0+63.4	#6735 #6748		2267 2268			3-17-51 12-6-51		
1+00	149.9	140.90	9.0		1+54.6	+57.6	#6747 #6746		2269 2270			12-6-51 12-6-51		
2+00	151.8	141.30	10.5		2+15.0	2+18.0	#6745		2244 2245			12-02-52 12-6-51		
3+00					+73.0	+76.0	#6744		2246 2247			2-14-52 12-6-51		
3+01	154.7	141.70 in 145.00 out	13.0 9.7	3+01	4" 40 PVC-CD 3+33.8	3+36.8	#6743		2241 2242			1-29-52 12-6-51		
4+00	157.1	145.40	11.7		+95.3	+98.3	#6742		2243 2244			2-14-52 12-6-51		
5+00	157.8	145.80	12.0		4+54.5	4+57.5	#6741		2245 2246			2-14-52 12-6-51		
6+00	157.1	146.20	10.9		5+15.7	5+18.7	#6740		2247 2248			2-14-52 12-6-51		
6+45.0	156.3	146.38	9.9	6+45.0	+73.0	+76.0	#1999		2249 2250			7-26-52 2-14-52		
# 2-D 0+00	157.8	147.00	10.8	0+00 = 20+47 in Line #2	0+06.4		#5476		2805 Ellen			8-8-51		
1+00	158.6	147.80	10.8											
1+56	159.7	148.24	11.5	1+56	MHTAP 4" 40 to MH 1+56		2003-02550 647		2821 E R 24th	see next pg		10/2/63 3-31-52		
# 3 0+00	165.3	154.98	10.3	0+00 = 25+49 in Line #2	0+47.8		#5639		2401 N Chautaugus			8-20-51		
1+00	166.0	155.40	10.6											
1+04.0	166.4	153.42 in 155.60 out	11.0 10.4	1+04.0										
2+00	166.8	156.00	10.8											
3+00	168.5	156.40	12.1											
3+58.5	168.7	156.64 157.02	12.1 11.7	3+58.5										
4+00	169.2	157.16	12.0		4+06.3		#7254		2402 N Chautaugus			1-26-52		
5+00	169.5	157.56	11.9		+60.0		#7255		2403 N Chautaugus			5-25-52		
5+99.0	168.6	157.96	10.7	5+99.0	5+21.0		#7256		2404 N Chautaugus			1-26-52		
6+00					5+75.4		#237		2405 N Chautaugus			3-27-52		
7+00	168.6	158.36	10.2		6+36.2		#237		2406 N Chautaugus			2-27-52		
8+00	169.8	158.76	11.1		7+01.0		#7257		2432 N Chautaugus			1-26-52		
8+98.5	172.3	159.16	13.1	8+98.5	+58.6		#6632		2433 N Chautaugus			11-26-51		
9+00					8+16.0		#6631		2434 N Chautaugus			5-15-51		
10+00	174.4	159.56	14.8		+80.5		#6630		2435 N Chautaugus			11-26-51		
11+00	175.7	159.96	15.8		9+36.5		#6629		2436 N Chautaugus			11-26-51		
11+93.8	176.9	160.33 in 162.48 out	16.4 16.4	11+93.8	9+84.1		#6628		2437 N Chautaugus			11-26-51		
12+00	177	160.53	16.4		11+70.4				2438 N Chautaugus			11-27-51		
13+00	176.8	160.93	15.8		12+13.0		#6622		3010 E R Chautaugus			11-26-51		
14+00	177.6	161.33	16.3		+71.9		#6621		3011 E R Chautaugus			11-26-51		
15+00	179.1	164.73	17.4		13+35.4	13+32.4	#6193	#6620	3012 E R Chautaugus			10-19-51		
15+56	180.3	161.95 in 161.97 out	18.4 18.3	15+56	+93.0		#6619		3013 E R Chautaugus			11-26-51		
16+00	179.8	162.13	17.7		14+21.4		#6192		3014 E R Chautaugus			10-19-51		
17+00	178.9	162.53	16.4		14+50.9		#6618		3015 E R Chautaugus			10-19-51		
18+00	177.4	162.93	14.5		15+12.7	15+09.7	#6191	#6617	3016 E R Chautaugus			10-19-51		
18+30	177.3	162.98 in 163.00 out	14.3 14.2	18+30			#6187		3017 E R Chautaugus			10-19-51		
19+00	179.9	163.29	16.6		18+47.8		#6186		3018 E R Chautaugus			10-19-51		
20+00	178.5	163.69	14.8		19+03.1		#6185		3019 E R Chautaugus			10-19-51		
20+90.5	178.2	164.04	14.1	20+90.5	+63.8		#6184		3020 E R Chautaugus			10-19-51		
					20+21.0		#6183		3021 E R Chautaugus			10-19-51		
					+81.6		#6182		3022 E R Chautaugus			10-19-51		

#289 - 2700 E. 21st - 3-8-52 - Frederick Pelly Co. (#2000 special fee paid 3-20-52 - Receipt #28125)

#647 - 2nd into M.H. 1+56 - 2821 E. 24th - 3-31-52 - Vaughn Pelly Co.

#7423 - 2nd - 2256 N. Estelle - 2-5-52 - Max Hinshaw

#7424 - 2nd - 2250 N. Estelle - 2-5-52 - Max Hinshaw

#189 - 2nd - 2236 Prince - 2-25-52 - Joe Mc Donald

#3244 - 2nd - 2237 Prince - 11-15-52 - Joe Mc Donald

#2670 - 2nd - 2547 N. Arcade - Kendall Plmng. - 11-18-54

see opp. page