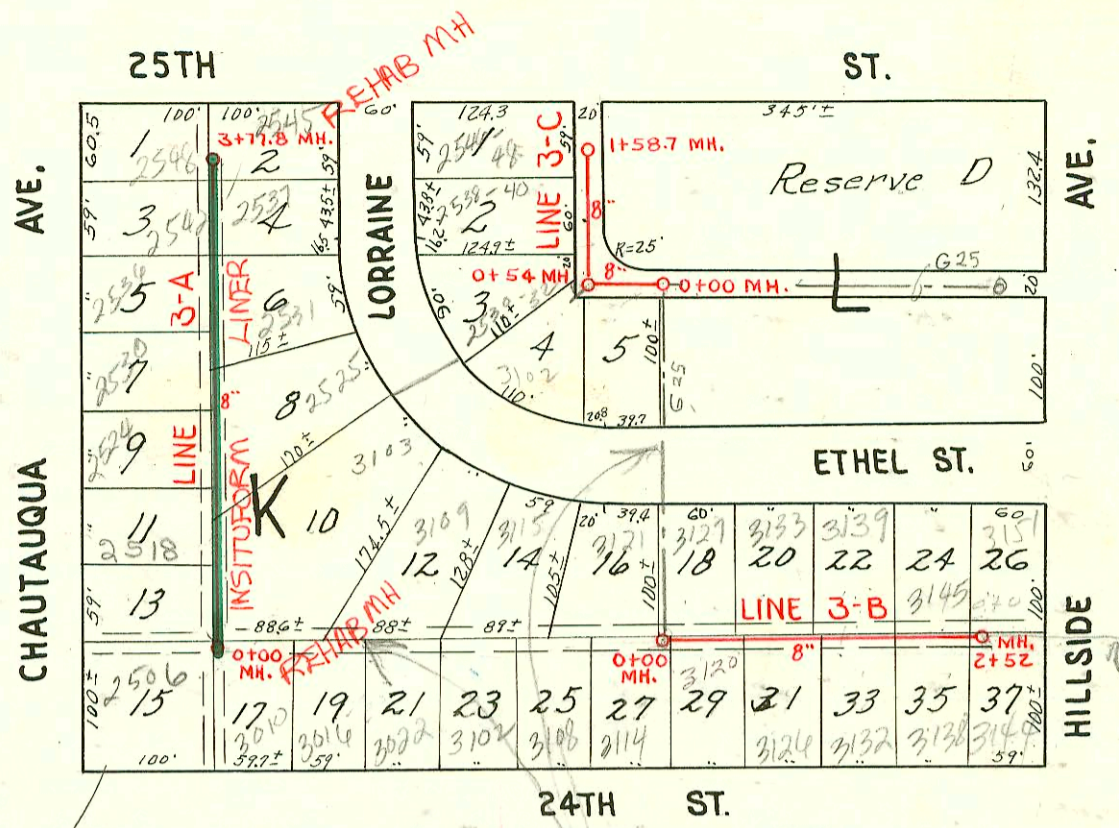


1994 SANITARY SEWER REHABILITATION
 PROGRAM - PHASE I
 PROJ. NO. 468-82399 (623124)
 BUILT BY INSITUFORM PLAINS, INC.
 BOOKED 2-9-95 FROM AS BUILTS

G 26A

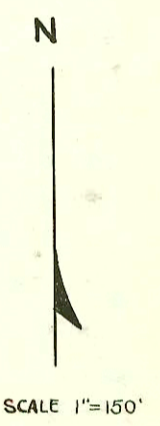
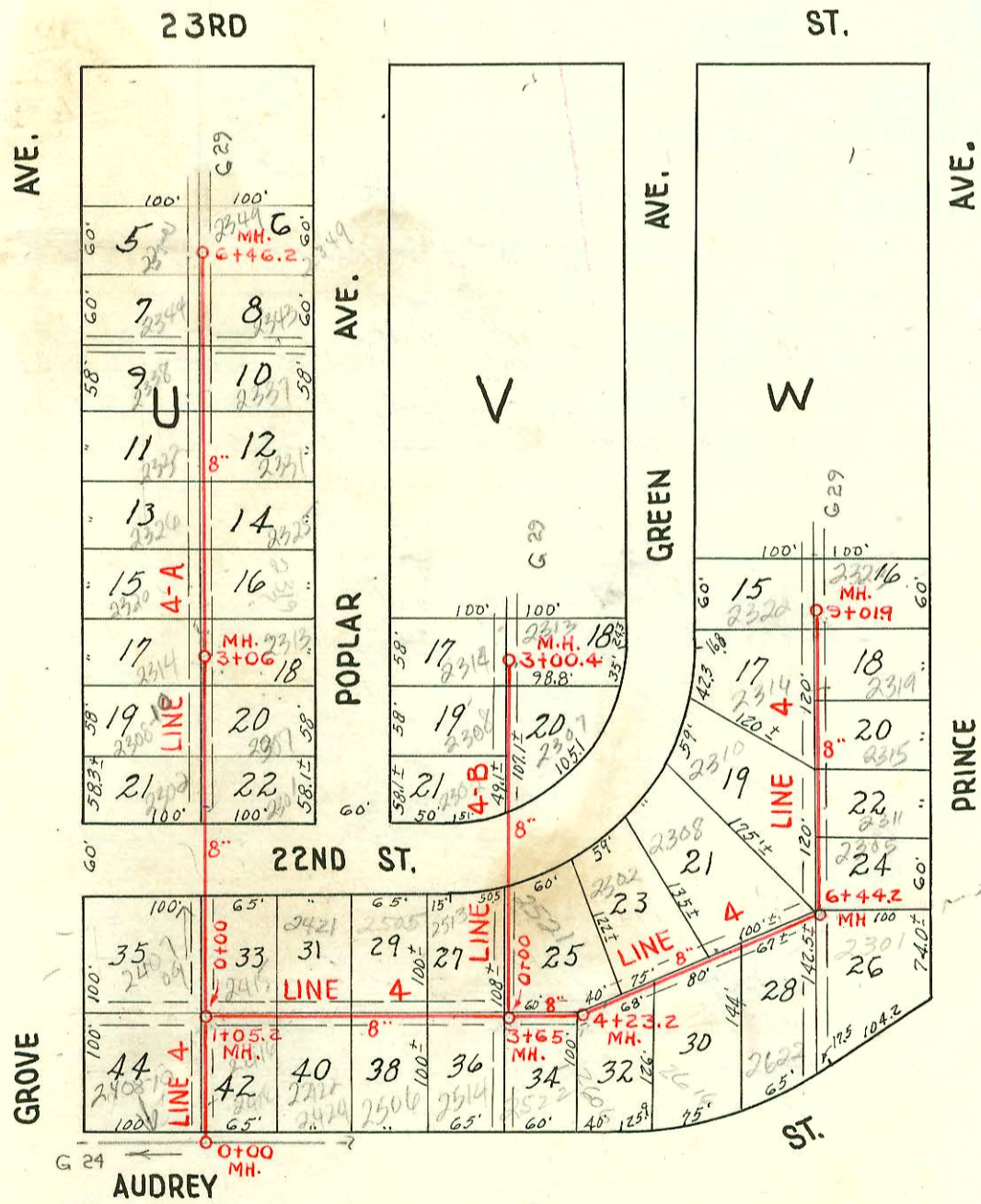
RECONNECTIONS

STA.	ADDRESS	DIRECTION
3+00	2548 N. Chautauqua	West
3+66.3	2545 N. Lorraine	East
3+15	2542 N. Chautauqua	West
3+12.6	2537 N. Lorraine	East
2+55.1	2536 N. Chautauqua	West
2+50.3	2531 N. Lorraine	East
1+93.6	2530 N. Chautauqua	West
1+35.5	2524 N. Chautauqua	West
1+30.9	2525 N. Lorraine	East
0+75.3	2518 N. Chautauqua	West
0+34.8	3103 E. Ethel	East
0+16.2	2512 N. Chautauqua	West



G-255

See Page 25



NOTE: Rear yard easements are 8' in width.
 Side yard easements are 5' in width.
 Sewer runs 3' east or 3' south of lot lines.

CONSTRUCTION RECORD

SERVICE RECORD

3-A

3-B

3-C

4

4-A

4-B

STATION	ELEVATION		Depth	MANHOLE	4-INCH "Y" BRANCHES		No. of Permit		House Number		DATE OF PERMITS			
	Ground	Grade			North West	South East	North West	South East	North West	South East	North West	South East	North West	South East
0+00	176.9	160.50	16.4	0+00=11793.8 in Line #3	0+19.5		25835 #6626		25127 Chautauq		6-10-58 11-26-51			
1+00	176.8	160.90	15.9		0+77.5		#6627	#6194	25187 Chautauq	3103 Exdel	11-26-51 10-19-51	9-26-90 10-19-51		
2+00	175.5	161.30	14.2		1+35.3	1+32.3	#1385	#6194	25247 Chautauq	2525 R	5-26-52			
3+00	173.6	161.70	11.9		+92.4		#1439		2530 Chautauq	2531 R	5-29-52			
3+77.8	171.8	162.01	9.8	3+77.8	2+54.4	2+51.4	#1001	#6194	2536 Chautauq	2531 R	4-24-52	16-19-51		
					3+15.6	3+12.6	#1000	#6173	2542 Chautauq	2537 R	4-24-52	10-19-51		
					+70.0	+67.0	#1002	#6172	2548 Chautauq	2545 R	4-24-52	10-19-51		
0+00	180.3	170.00	10.3	0+00=15756 in Line #3	Y NORTH	Y SOUTH	#6190	#6616	3127 Exdel	3120 R	10-19-51	8-27-81 11-26-51		
1+00	182.7	170.80	11.9		+75.0	+72.0	#6189	#6615	3132 Exdel	3125 R	10-19-51	11-26-51		
2+00	185.0	171.60	13.45		1+33.0	1+30.0	#6188	#6614	3137 Exdel	3130 R	10-19-51	11-26-51		
2+52	185.9	172.00	13.9	2+52	+97.5	+94.5	#6187	#6176	3145 Exdel	3138 R	10-19-51	10-19-51		
					(4" Stub S. & N.)		#6186	#6171	3151 Exdel	3144 R	10-19-51	10-19-51		
0+00	177.2	163.22	14.0	0+00=18730 in Line #3	Y WEST	Y SOUTH			3102 Exdel			10-19-51		
0+54.0	175.6 175.4	163.42 in 163.61 Out	12.2 12.7	0+54.0	(4" Stub S. W.)		#6184		3114 Exdel			10-19-51		
1+00	175.0	163.77	11.2		0+68.0		#6178		3121 Exdel			10-19-51		
1+58.7	174.5	164.00	10.5	1+58.7	1+02.1		#6177		3130 Exdel			10-19-51		
					1+51.1		#6176		3137 Exdel			10-19-51		
0+00	136.9	126.00	10.9	0+00=1775 in Line #2	Y WEST	Y EAST								
1+00	139.7	126.40	13.3		0+55.3	0+52.3								
1+05.2	139.8 139.9	126.42 in 129.98 Out		1+05.2	Y NORTH	Y SOUTH	#6229	#5227	2415 Exdel	2418 R	5-15-53	5-15-53		
2+00	142.5	130.38	12.2		+81.2	+84.2	#6228	#5228	2421 Exdel	2424 R	3-12-50	5-15-53		
3+00	142.9	130.78	12.1		2+45.5	2+48.5	#6218	#6218	2505 Exdel	2506 R	3-9-53	8-19-53		
3+65	143.7	131.04 in 135.00 Out	12.6 8.6	3+65	3+10.0	3+13.0	#6187		2513 Exdel	2514 R	3-16-47	8-17-53		
4+00	143.7	135.14	8.6		+77.4	3+80.4	#6188		2521 Exdel	2522 R	3-27-47	8-17-53		
4+23.2	143.6	135.23	8.4 in 8.5 Out	4+23.2	4+74.1		#6185		2527 Exdel	2528 R	3-31-52	8-17-53		
5+00	145.0	135.54	9.5		4+74.1	4+39.7	#636		2606 Exdel	2606 R	3-31-52	8-17-53		
					5+08.0		#6217		2616 Exdel	2616 R	3-31-52	8-17-53		
					5+55.0	5+89.5	#6183		2622 Exdel	2622 R	3-31-52	8-15-53		
6+00	146.0	135.94	10.1		6+59.5	6+62.5	#1506		2305 Exdel	2305 R	3-31-52	8-17-53		
6+44.2	146.6	136.10 in 140.02 Out	10.5 6.6	6+44.2	7+00	7+19.0	#1507		2311 Exdel	2311 R	3-31-52	8-17-53		
					7+76.1	+79.1	#2220		2315 Exdel	2315 R	3-31-52	8-17-53		
8+00	152.2	140.64	11.5		8+35.0	8+35.0	#2221		2322 Exdel	2322 R	3-31-52	5-12-52		
9+00	153.6	141.04	12.5		8+90.4	+93.0	#632	#1188	2322 Exdel	2322 R	3-31-52	5-12-52		
9+01.9	153.6	141.04	12.5	9+01.9										
0+00	139.8	128.00	11.8	0+00=17052 in Line #4	0+19.5	0+16.5	#6902		2407 Exdel	2407 R	11-10-53			
1+00	141.9	128.40	13.5		1+78.9	1+75.9	#3526		2301 Exdel	2301 R	12-31-52	12-15-52		
2+00	143.3	128.80	14.5		2+38.4	2+35.4	#2316		2307 Exdel	2307 R	12-20-54	8-25-52		
3+00					2+98.0	+95.0	#2317		2314 Exdel	2314 R	10-4-52	9-12-52		
3+06	144.1	129.00 in 130.00 Out	14.9 14.1	3+06	3+54.0	3+51.0	#2317	#2302	2320 Exdel	2319 R	9-14-52	10-10-51		
4+00	145.1	130.40	14.7		4+13.0	4+10.0	#2318	#2303	2326 Exdel	2325 R	8-25-52	8-25-52		
5+00	145.8	130.80	15.0		4+69.1	4+66.1	#2421	#2304	2332 Exdel	2331 R	9-8-52	8-25-52		
					5+27.5	5+24.5	#2422	#2305	2338 Exdel	2337 R	9-8-52	8-25-52		
					5+86.7	5+83.7	#5594	#3507	2344 Exdel	2343 R	6-18-53	192-75-52		
6+00	145.1	131.20	13.9		6+35.9	6+32.9	#4669	#3508	2350 Exdel	2349 R	2-6-53	12-15-52		
6+46.2	143.8	131.36	12.4	6+46.2										
0+00	143.4	135.00	8.4	0+00=3765 in Line #4	1+80.3		#4066		2302 Exdel	2302 R	2-6-53			
1+00	147.0	136.00	11.0		2+31	2+28	#4067		2308 Exdel	2308 R	2-6-53			
2+00	150.1	137.00	13.1		2+83.3	2+80.3	#4593	#2593	2314 Exdel	2313 R	3-13-52			
3+00														
3+00.4	151.6	138.00	13.1	3+00.4										
1+0				0+0 1+30										

Private Line

633 - 2nd - 2316 N, Green - 3-31-52 - Baker Pllg. Co
 # 634 - 2nd - 2310 N, Green - 3-31-52 - Baker Pllg. Co
 # 3525 - 2nd - 2302 N, Green - 12-15-52 - Pappi Pllg. Co
 # 4068 - 2nd - 2307 N, Green - 2-6-53 - Joe Mc Donald
 # 61 - 2nd - 2408 18 Audrey - 2-7-54 - S. & P. Pllg. Co. Inc. - STA 0+80.2 (LINE 4)
 # 1393 - Stub 2500 N. Hill side 10-20-60 Curtis Pllg. Co.
 # 5230 - TRP 2421 E. 22nd N 10th 5-15-53 VAUGHN Pllg.
 # 4385 - TRP 2513 E. 22nd N 10th 3-9-53 ART PROSSER

064356-2319 N. Poplar 10-20-81 Mike Brothers (3+69.0 - 63.0' N 34060)
 94-7479-7 5-9-54 2319 PRINCE - McCLUNG'S (Lye 8+35-1" Sch 40)