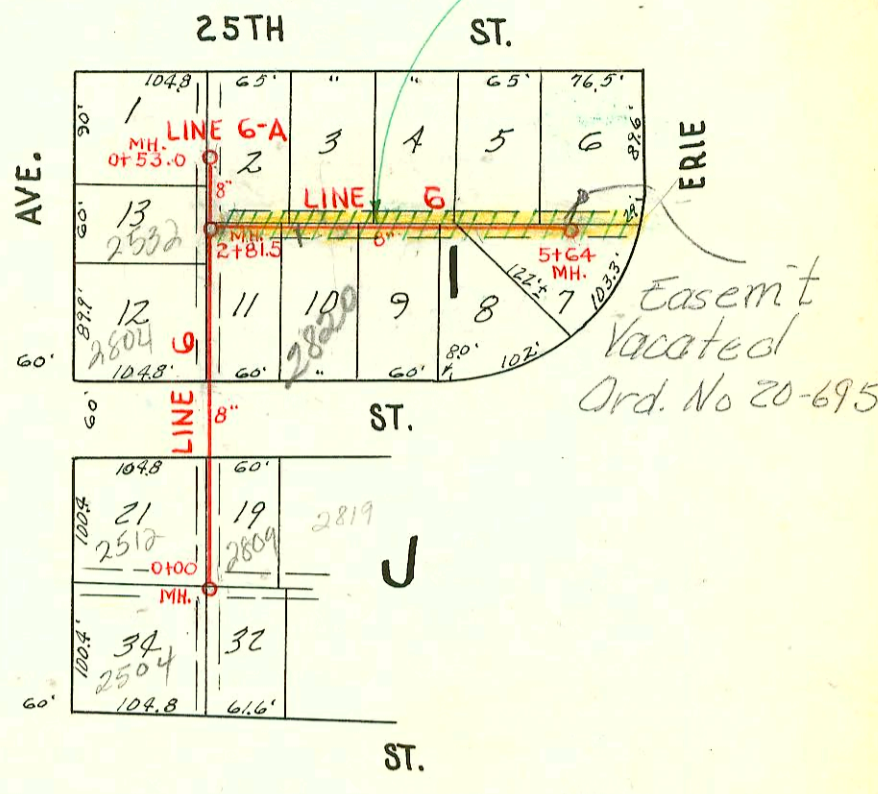
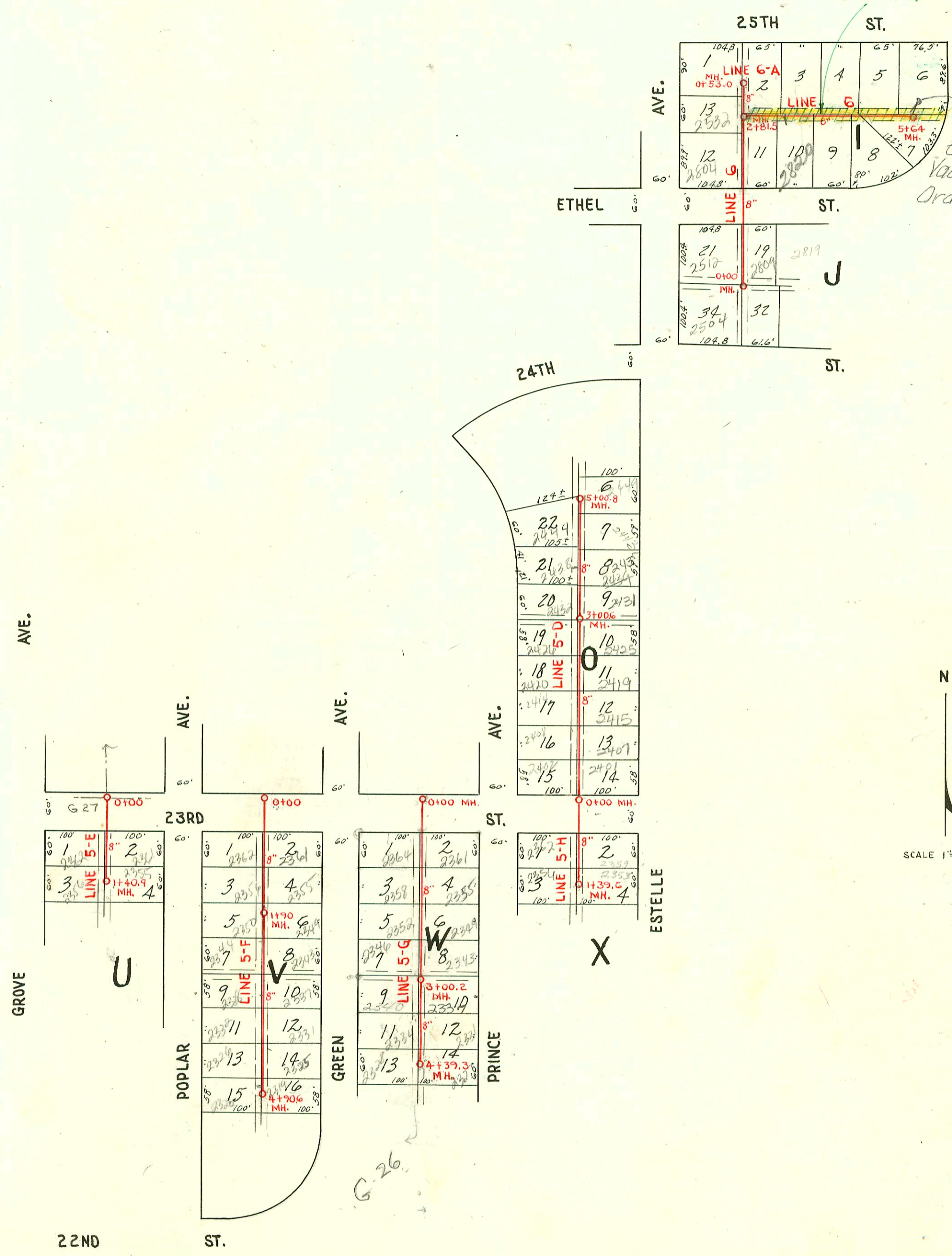


NOTE: San. Sewer Line and 16' Easement abandoned Jan. 11, 1955



NOTE: Rear yard easements are 8' in width.
Side yard easements are 5' in width.
Sewer runs 3' east or 3' south of lot lines.

CONSTRUCTION RECORD

SERVICE RECORD

STATION	ELEVATION		Depth	MANHOLE	4-INCH "Y" BRANCHES		No. of Permit		House Number		DATE OF PERMITS	
	Ground	Grade			North West	South East	North West	South East	North West	South East	North West	South East
#5-D 0+00	153.3	141.18	12.1	0+00=9+54.6 in Line #5	0+22.7	0+24.7	#5974 #6781	2407R 2407R	2407R 2407R	9-27-51	12-11-51	
1+00	149.2	141.60	7.6		+88.6 +45.9	+85.6 +42.9	#5915 #5976	2408R 2410R	2407R 2407R	4-12-79	9-27-51	
2+00	154.5	142.80	11.7		2+00.7	+97.7	#5976 #6782	2410R 2410R	2407R 2407R	6-25-53	9-27-51	
3+00	156.5	143.20	13.3		2+00.7	2+59.0	#6790 #6784	2420R 2420R	2407R 2407R	6-15-58	12-11-51	
3+00.6	156.5	143.20	13.3	3+00.6	3+19.8	3+16.8	#6786	2436R 2436R	2425R 2425R	11-26-52	12-11-51	
4+00	158.4	143.60	14.8		+78.0	3+75.0	#6787	2437R 2437R	2437R 2437R		12-11-51	
5+00	159.3	144.00	15.3		4+38.8	4+35.8	#6794 #6788	2444R 2444R	2444R 2444R	12-11-51	12-11-51	
5+00.8	159.3	144.00	15.3	5+00.8	+87.8		#6789	2449R 2449R	2449R 2449R		12-11-51	
#5-E 0+00	138.9	129.98	8.9	0+00=1+73.3 in Line #5	0+67.2	0+64.2	#4070	2356R 2356R	2356R 2356R	9-6-53	9-28-90	
1+00	140.2	130.40	9.8		1+23.7	1+20.7	#3507	2356R 2356R	2356R 2356R	12-15-52		
1+40.9	141.3	130.56	10.7	1+40.9								
#5-F 0+00	142.9	134.00	8.9	0+00=4+34.6 in Line #5	0+65.3	0+62.3	#4422 #4423	2362R 2362R	2361R 2361R	3-11-53	3-11-53	
1+00	142.4	134.40	8.0		1+22.7	1+19.7	#3479 #6621	2356R 2356R	2356R 2356R	12-11-52	10-3-53	
1+90.0	144.1	137.00	7.1	1+90.0	+83.7	+80.7	#2592 #2591	2356R 2356R	2356R 2356R	9-19-52	9-19-52	
2+00	144.5	137.04	7.5		2+39.5	2+36.5	#2592 #2591	2356R 2356R	2356R 2356R	4-2-98	9-19-52	
3+00	147.8	137.44	10.4		3+04.0	3+01.0	#2297 #2301	2356R 2356R	2356R 2356R	8-25-52	8-25-52	
4+00	150.14	137.84	12.3		+62.0	+59.0	#2296 #2300	2356R 2356R	2356R 2356R	8-25-52	8-25-52	
4+90.6	151.0	138.20	12.9	4+90.6	4+22.9	4+19.4	#2295 #2299	2356R 2356R	2356R 2356R	8-25-52	8-25-52	
#5-G 0+00	149.6	137.50	12.1	0+00=6+94.8 in Line #5	0+64.3	0+61.3	#6620	2356R 2356R	2356R 2356R	10-3-53		
1+00	148.6	137.90	10.7		1+21.6	1+18.6	#6619	2356R 2356R	2356R 2356R	10-3-53		
2+00	146.6	138.30	8.27		+82.1	+79.1	#6618	2356R 2356R	2356R 2356R	10-3-53		
3+00	149.6	138.70	10.9		2+43.2	2+40.2						
3+00.2	149.6	138.70	10.9	3+00.2	3+10.4	3+07.4	#629	2356R 2356R	2356R 2356R	2-25-74		
4+00	152.4	139.10	12.3		+64.1	+61.1	#630 #1189	2356R 2356R	2356R 2356R	3-31-52	5-12-52	
4+39.3	153.1	139.26	13.9	4+39.3	4+31.4	4+28.4	#631 #1190	2356R 2356R	2356R 2356R	3-31-52	5-12-52	
#5-H 0+00	153.3	141.18	12.1	0+00=9+54.6 in Line #5	0+64.2	0+61.2	M.H. Jap #2646 #1003	2356R 2356R	2356R 2356R	3-1-52	4-24-52	
1+00	149.2	141.60	7.6		1+25.0	1+22.0	#263 #1191	2356R 2356R	2356R 2356R	3-4-52	3-20-52	
1+39.6	150.7	141.76	8.9	1+39.6								
#6 0+00	159.3	158.02	11.3	0+00=13+75.5 in Line 5-B								
1+00	169.6	158.40	11.2		1+71.0							
2+00	168.19	158.80	9.4		2+59.0	2+52.5	#7406	2800	2800	9-19-79		
2+81.5	168.5	159.86	8.6	2+81.5	Y NORTH	Y SOUTH						
3+00	168.9	159.96	8.9		2+93.0	2+96.0	#7406 #3091	2820	2820	9-19-79		
4+00	171.5	160.36	11.1		3+55.0	3+52.0				1-4-52		
					4+23.0							
						4+71.8						
					4+83.7	+86.7						
5+00	172.2	160.76	11.4		5+50.8							
5+64.0	172.6	161.02		5+64.0								
#6-A 0+00	168.6	159.50	9.1	0+00=2+81.5 in Line #6	Y WEST							
0+53.0	167.7	159.71	8.0	0+53.0	0+39.0							

2003-01670 1425/03 2414 Prince Redd Pipeburst Repl 4" PVEDR17-city wye repair 145.9' N of MH 0+00 (145.9)
4" PVEDR, 1445, 1422

Rep- 2000-02148-2356 N Poplar St-9/28/00-Clearwater Exc- 4" SCH40- 43' N MH 1+90 (1+47) Tied back to claytile 8'
from main- ITWIN CO

2002-03226 1426/02 2426 N Prince RD Campbell 2422, ITWIN CO, 14" Fernco, tied to wye 38.6 S of MH 3+00.6 (3+39.2)

073575-2419 N. Estelle - 8-13-79-Repair (1+96.0)

Jap 47188-2353 N. Estelle - 10-30-74-Joe Sullivan ()

#2499-24-2349 Prince - 9-12-52-Reynolds Pllg Co

#2498-24-2343 Prince - 9-12-52-Reynolds Pllg Co

#2226-24-2337 Prince - 8-20-52-Reynolds Pllg Co-Redd- ITWIN CO 4" 40 PVC

2003-00922 #6192-24-2432 Prince - 12-11-52-Bradley Pllg Co

2003-0193 #6793-24-2438 Prince - 12-11-52-Bradley Pllg Co - 274368-6th - 11-14-74-Jed Jones

#2735-24-2355 Prince - 10-1-52-Harley Riggs

#2531-24-2361 N. Poplar - 9-15-52-Joe McDonald

#2311-24-2361 Prince - 8-25-51-Harley Riggs

#3257-24-2362 N. Prince - 11-17-52-Joe McDonald

#3256-24-2364 N. Prince - 11-17-52-Joe McDonald