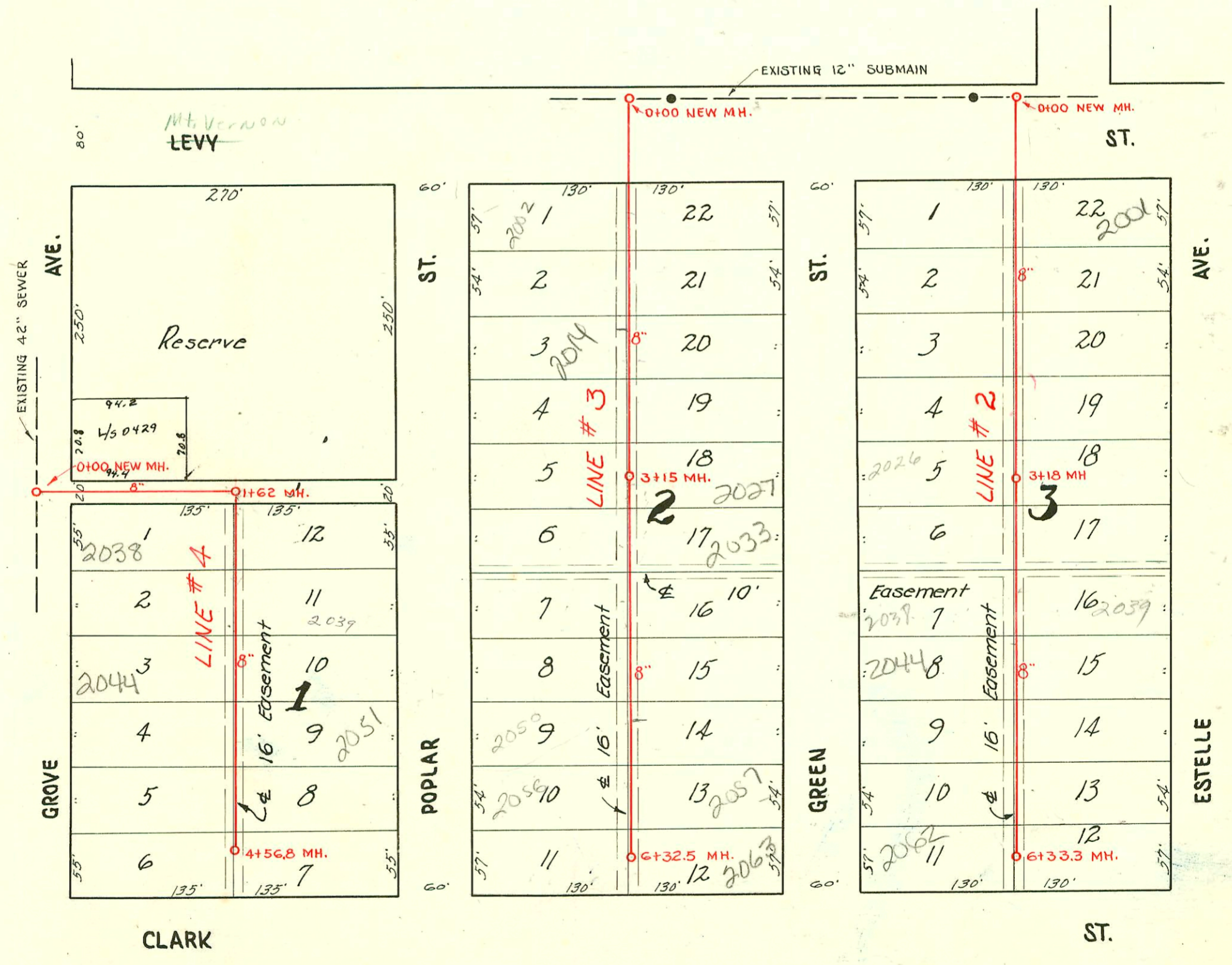


LAT. 22, DIST. B., S.S.# 20
 W. B. CARTER - 1951
 PROJ. NO. C21-35
 Book # M-22
 Oct. 8, 1951



2002-00020-11262 - Wichita Exc - 2063 S Green - Replace entire line - 4" SCH 40 PVC - tied back to wye w/ doout
 4#22, 1#45, 1#22, 1#45, 2 TWIN CO
 2057 S. Green - 10/26/03 - Integrity Pigs - 4" SCH 40 - 1 TW IN CO
 Repl 1' with 4" sch 40 - 2 45 bands 1 42 band
 6" predco saddle and 6" to 4" reducer used. Connection is 6' N. of MH
 2003-00178 11/21/03 2033 Green - Wichita Exc - 4" PVC, (TWINCO), 1#22,
 1#22, shallow, city wye repair 39's of MH 3#15 (3#54)

LAT. 2, D. C. S., S.S.# 2
 W. B. CARTER - 1951
 PRIVATE JOB
 Book # M-17
 Oct. 8, 1951
 See 6-221 for line between
 Estelle & Voltaire

CONSTRUCTION RECORD

SERVICE RECORD

STATION	ELEVATION		Depth	MANHOLE	6 INCH "Y" BRANCHES		No. of Permit		House Number		DATE OF PERMITS			
	Ground	Grade			North West	South East	North West	South East	North West	South East	North West	South East	North West	South East
0+00	95.4	90.17	5.2	0+00										
0+77.4	94.7	90.25 in	4.5	EXIST'G MH.										
1+00	94.4	90.35 Out	4.3	0+77.4										
		90.37	4.0		1+07.9	4" PVC	13229	#6835	2602	2605 R	10-3-50	5-15-51		
					1+09.4						2-18-53	12-11-51		
					1+59.2									
2+00	94.5	90.47	4.0		2+04.8	2+07.8	#2082	#6836	2613	2614	8-6-52	12-14-51		
					+59.8									
						2+89.7								
3+00	94.2	90.57	3.7		3+11.8		#6730		2618	2622	10-19-53			
					+58.7									
3+62.6	94.5	90.63	3.8	3+62.6										
4+00	94.3	90.67	3.6		4+06.0	3+67.3								
						4+38.5								
					4+60.0									
5+00	94.3	90.77	3.6		5+14.8	5+11.8	#2083		2638	2641	8-6-52			
					+57.3									
					6+08.6									
6+46.5	94.2	90.92	3.3	6+46.5	Stub East & West	4584	#7366	2646	2651	2651	8-24-67	3-12-52		
LAT 2, D.C.S. # 2														
0+00	98.6	93.10	5.5	0+00	0+79.0	0+76.0	#6205	#2145	2002	2001 S	10-22-51	9-30-54		
1+00	97.6	93.20	4.4		1+33.1	1+30.1	#6206	#1126	2002 R	2007 R	10-22-51	6-8-54		
					187.3	184.3	#6207	#1160	2014 R	2015 R	10-22-51	6-11-54		
2+00	97.4	93.30	4.1		2+42.6	2+39.6	#6208	#1722	2020	2021	10-22-51	8-10-54		
					+94.0	+91.0	#6209	#1721	2022 (CR)	2023	10-22-51	8-10-54		
3+00	97.2	93.40	3.8		3+51.0	3+48.0	#6210	#2319	2022	2023	10-22-51	10-21-54		
3+18	97.3	93.42 in	3.9	3+18	3+51.0	3+48.0	#6211	#2340	2032	2033	10-22-51	2-7-55		
4+00	97.6	93.55	4.0		4+08.8	4+05.8	#6212	#2341	2044 R	2045 R	10-22-51	2-7-55		
					4+60.9	+57.9	#6213	#2318	2050	2051	10-22-51	10-21-54		
5+00	97.4	93.65	3.8		5+13.5	5+10.5	#6214	#2317	2056	2057	10-22-51	10-21-54		
					+70.5	+67.5	#6215	#1723	2062	2063	10-22-51	8-10-54		
6+00	97.5	93.75	3.7		6+24.8	6+21.8								
6+33.3	97.5	93.78	3.7	6+33.3										
Line # 3														
0+00	97.6	92.50	5.1	0+00	0+85.7	0+82.7		#162	2041 R	2042 R		2-23-52		
1+00	97.2	92.60	4.6		1+37.9	1+34.9	#164	#161	2007 R	2008 R	2-23-52	2-23-52		
					1+96.0	1+93.0	#165	#159	2015 R	2016 R	2-23-52	2-23-52		
2+00	97.2	92.70	4.5		2+47.4	2+44.4	#166	#158	2020 R	2021 R	2-23-52	2-23-52		
					+99.8	+96.8	#167	#157	2027 R	2028 R	3-9-53			
3+00	97.1	92.80	4.3		3+02.8		#168	#7047	2032 R	2033 R	2-23-52	1-21-03		
3+15	97.0	92.82	4.2	3+15	+57.0	3+54.0	#169	#7048	2038 R	2039 R	2-23-52	1-14-52		
4+00	96.93	92.90	4.0		4+12.6	4+09.6	#170	#7049	2044 R	2045 R	2-23-52	1-14-52		
					+67.9	+64.9	#171	#7046	2050 R	2051 R	2-23-52	1-14-52		
5+00	96.9	93.00	4.0		5+23.0	5+20.0	#172	#7045	2056 R	2057 R	2-23-52	1-14-52		
					+75.9	+72.9	#173	#7044	2062 R	2063 R	2-23-52	1-14-52		
6+00	97.1	93.10	4.0		6+24.5	6+21.5								
6+32.5	97.1	93.14	4.0	6+32.5										
Line # 4														
0+00	98.6	91.00	7.6	0+00										
1+00	97.9	91.10	6.8											
1+62	97.2	91.36 in	5.9	1+62	1+87.2	1+85.2	#801	#795	2032	2033	4-7-52	10-14-75		
		91.36 Out	5.9		2+39.9	2+36.9	#802	#794	2038 R	2039 R	4-7-52	4-7-52		
2+00	97.4	91.41	6.0		+95.2	+92.2	#799	#793	2044 R	2045 R	4-7-52	4-7-52		
							#798	#792	2050 R	2051 R	4-7-52	4-7-52		
3+00	97.5	91.51	6.0		3+50.5	3+47.5	#797	#791	2056 R	2057 R	4-7-52	4-7-52		
4+00	97.6	91.61	6.0		4+06.3	4+03.3	#796	#790	2062 R	2063 R	4-7-52	4-7-52		
					+41.8	+38.8						10-21-66		
4+56.8	97.8	91.67	6.1	4+56.8										

2003-00067-118103-2014 Poplar-4" PVC 40-4" wye 196' sof MH 0+00 (1+96) '14" fall, shallow, 1H 22, Replace entire line- 4" existing co at house

2000-02728-121500-20445 Green-Wichita Exc-4" SCH40-4" wye-137' Nof MH 6+33.3 (4+56.3) Replace entire line, 1H 22, 2H 22.

157633-1-25-77-203-20445. Poplar-4" wye (4+82.6)

#6837- 24" - 2621 Lulu - 12-14-51 - Joe Mc Donald - Poplar # 527 - Al Kenney - 2063 S. Poplar - 10/21/66

#6838- 24" - 2629 Lulu - 12-14-51 - Joe Mc Donald - (4+58.8)

#7363 - 24" - 2637 Lulu - 2-2-52

#7364 - 24" - 2645 Lulu - Joe Mc Donald

#7365 - 24" - 2653 Lulu - Joe Mc Donald

#763 - 24" - 2002 S. Poplar - 2-23-52 - Wichita Oily Co (0+75.0 wye)

#6338 - 24" - 2626 Lulu - 8-24-51

11267 - 24" - 2626 Lulu - 8-24-51