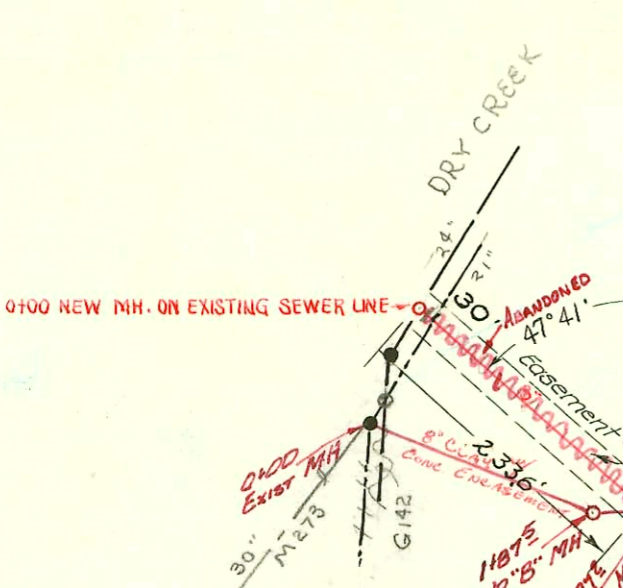


HARRY ST.



SS. RELOCATION IN
CONN'Y PAVING INTERSECTION
OF HARRY & OLIVER
BUILT BY: W.B. CARTER CONST. CO.
BOOKED: 7 SEPT 71 FROM 260-Y
PROJ. No. DAKS57004B



1" = 150'

11-62

Gardner-Kelly add
lots 1 & 3 granted
right to build & maintain
sewer line across
lots 2 & 4 to 8" main
see paper book
sewer book
2/11/89
BR

OLIVER

LAT. 51, D.C.S., S.S. #12
UTILITIES CONTRACTORS INC.
Book No. M-15, Proj. No. C20-53
Oct. 15, 1951

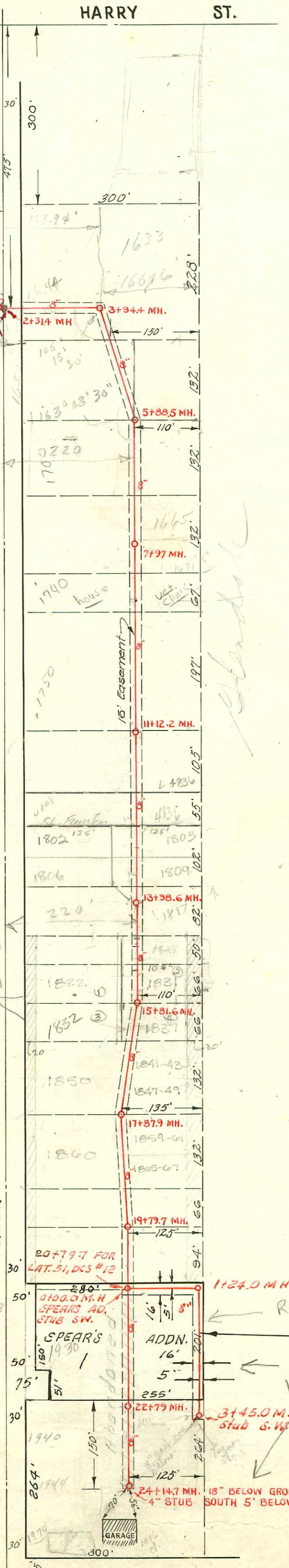
#17353 top. 1633 S. Blendale - In State Service 7-2-63
top. (M. 3+94.4)

Refer to F275 for connect info
for 4814 E Mt Vernon -
SPEAR'S ADDITION
SANITARY SEWER
Elementary School

1881
copy JAN. 1968
9-14-1-8

19305 Oliver
new spears

MT. VERNON ROAD



CONSTRUCTION RECORD

SERVICE RECORD

STATION	ELEVATION		Depth	MANHOLE	4-INCH "Y" BRANCHES		No. of Permit		House Number		DATE OF PERMITS	
	Ground	Grade			North-West	South-East	North West	South East	North West	South East	North West	South East
0+00	132.8	126.38	6.4	0+00 New MH.								
1+00	132.2	126.48	5.8									
2+00	134.5	126.58	7.9									
2+31.4	136.4	126.71	9.6	2+31.4	Y NORTH							
3+00	132.4	126.78	5.6		3+00							
3+94.4	135.1	126.87	8.2	3+94.4								
4+00	135.4	127.00	8.4		Y WEST	Y EAST						
					4+40.9	4+37.9						
5+00	142.3	127.09	15.2		5+00		#5212		1650 S Oliver		5-14-53	See list
5+88.5	142.5	127.18	15.4	5+88.5			#20675		1650 S Oliver		8-25-70	
6+00	142.1	130.66	11.4		6+24.2		#109		1100 S Oliver		2-18-52	
					+51.5							
7+00	142.4	130.77	11.6		7+50.9	7+53.9		#401	1728 S Oliver	1665 S Glendale		3-18-52
7+97.0	142.9	130.87	12.1	7+97.0								
8+00						8+06.4						
					8+91.0	+88.0	#2883		1740 S Oliver			10-20-52
9+00	145.5	134.10	11.4		9+43	9+40.1	#60445					6-4-80
10+00	146.8	134.20	12.6		10+52.9	10+55.9	#6117					10-15-51
11+00	148.0	134.30	13.7		11+39.2	11+42.2	#7355	#253158	1754 S Oliver	1836 S Remington		1-31-52
11+12.2	148.0	134.30	13.7	11+12.2								1-15-76
12+00	149.3	134.40	13.6		12+69.0	12+72.0	#7284	#7215	1806 S Oliver	1806 S Glendale		1-27-56
13+00	147.3	134.50	12.7		13+53	13+56	#6677	#7286	1806 S Oliver	1806 S Glendale		11-22-74
13+98.6	144.6	134.70	9.9	13+98.6	13+65.4		47572		1806 S Oliver			11-27-74
14+00		134.80	9.8		14+06.8	14+09.8	#6097	#252370	1810 S Oliver	1810 S Glendale		10-11-51
					14+98.6							
15+00	142.9	134.90	8.0		15+71.6	15+01.6	#173		1820 S Oliver			4-22-57
15+81.6	143.0	134.98	8.0	15+81.6	15+24.7	+27.7	#2494		1820 S Oliver			11-22-51
16+00	142.6	135.08	7.9		16+13.5	16+16.5	#2495		1820 S Oliver			2-1-57
17+00	143.1	135.10	7.5		17+48.3	17+51.3	#6041		1820 S Oliver			10-5-51
17+87.9	144.8	135.29	9.5	17+87.9	17+77.9		47939		1850 S Oliver			12-31-74
18+00	145.0	135.38	9.5		18+68.4	18+71.4	#6225		1850 S Oliver			10-23-51
					+9.5							
19+00	147.8	135.50	12.3		19+41.0	19+44.0						
19+79.7	149.5	135.58	13.8	19+79.7								
20+00	149.8	135.68	13.9		20+02.7	20+05.7	#6220		1912 S Oliver			10-23-51
21+00	149.8	135.70	14.1		21+00							
21+00	149.8	135.80	14.0		21+78.2	+81.2	#6221		1912 S Oliver			10-23-51
22+00	149.9	135.90	14.0									
22+79.0	149.1	135.98	13.1	22+79.0					1930 S Oliver			7-24-68
23+00	149.1	136.08	13.0									
24+00	148.8	136.10	13.0		24+10	24+07	#6487		1960 S Oliver			11-19-51
24+14.7	148.6	136.20	12.6	24+14.7	(4" Stub South)		#6488		1960 S Oliver			11-19-51

Abandoned
SPEAR'S ADDN.
SANITARY SEWER

0+00	149.5	135.8 out	13.7	0+00.0 = stub SW								
1+00	149.8	136.0 in	13.5	20+79.7 - 51-DCS-12								
1+00	149.8	136.2	13.6									
1+00	149.5	136.25 out	13.2									
2+00	149.5	136.35 in	13.1	1+24°								
2+00	149.2	136.5	12.7									
3+00	149.0	136.7	12.3									
3+00	148.8	136.79	12.0	3+45°								

STATION	ELEVATION	Depth	MANHOLE	Notes
2+00	134.7	122.69	12.0	EXIST 2+27E = 2.25" MH @ LAT 51
1+00	131.6	123.09	8.5	
1+00	130.3	123.44 out	14.9	
2+00	130.3	126.03 in	12.3	
2+00	130.4	126.08	12.3	
2+00	137.78	126.19	11.6	

95-17192-7 id24195 1740 S Oliver (Garage conn to tap (line)) - 4" boxes - TAP 8+96.6 4" SDR35 (1941 S Glendale)

NE #8725 1750 S Oliver (6-8) Bus Seat 7-19-83 (7.4 N) (146.16 N) (9450.67)

NE #8726 1750 S Oliver (10) " " " " (96.8 N) (10+15.47)

NE #8727 1750 S Oliver (1-8) " " " " (10.5 N) (11+01.72)

NE #8734 4808 E. Sunston (1-8) " " " " (8.5 N) (11+03.79)

NE 1755 - 1650 S Oliver 11-5-80 Eric Carter (5+11.0)

C 19974 1650 S Oliver (Set off Filling Station only) at Henning - 7-7-70

#34713 - top - 1671 S Glendale - Bradford Denver 12-7-65 - tap (8+23.7)

#7445 - top - 1827 S Glendale - 1-21-54 - Reynolds Oly Co. Inc.

#6061 - top - 1820 S Oliver - 10-8-51 - Eugene Reynolds

#1660 - top - 1728 S Oliver - 6-16-52 - Art Crosser

#5617 - top - 1842 S Oliver - 6-22-53 - Ray Harp

#5785 - top - 1100 S Oliver - 7-13-53 - Nancy Mann

#7076 - top - 1849 S Glendale - 11-30-53 - Joe Mc Donald

#7078 - top - 1841 S Glendale - 11-30-53 - Joe Mc Donald

#6287 - top - 1831 S Glendale - Lucy doll 9-25-55

#6777 - top - 1832 S Oliver - Boyer pldg. 12-21-55

#1251 - top - 1837 S Glendale - Handy pldg. 1-20-56

5882 - top 1974 S Oliver Reynolds 12-18-57 - top

#16805 1644 S Oliver - Bradford pldg. 3-19-63

top - (3+23.4)