



Scale 1"=80'

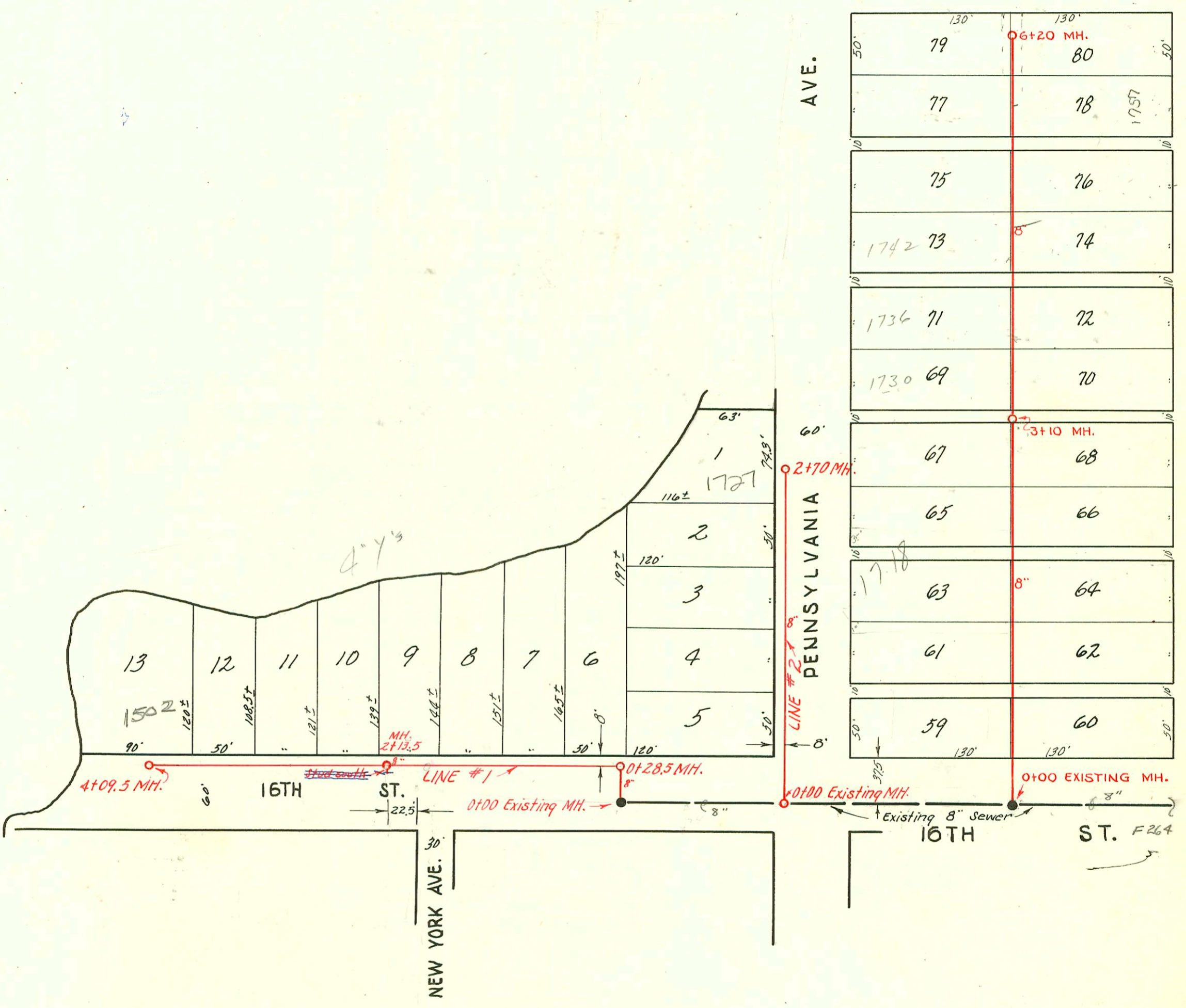
4" y's steel

17TH ST.

AVE.

AVE.

HYDRAULIC



LAT. 4, SUB. Y, S. S. NO. 12
 W. B. CARTER - MARCH, 1952
 Bk. Jf. 63, PROJ. NO. C21-14
 3-11-52

LAT. 23, DIST. T., S. S. # 12
 W. B. CARTER - CONT.
 PROJ. NO. C20-30
 Book # M-24
 Nov. 15, 1951

CONSTRUCTION RECORD							SERVICE RECORD					
STATION	ELEVATION		Depth	MANHOLE	4-INCH "Y" BRANCHES		No. of Permit		House Number		DATE OF PERMITS	
	Ground	Grade			North West	South East	North West	South East	North West	South East	North West	South East
0+00	117.08	113.15	3.8	0+00 Existing MH.	0+50.5	0+47.5		#6396	1703 N. Hydraulic			11-8-51
1+00	118.0	113.25	4.7		1+12	1+09						
2+00	117.4	113.35	4.0		+61	+58						
3+00	117.5	113.45	4.1		2+20	2+17						
3+10	117.5	113.46	4.1	3+10	+72	+69						
4+00	117.5	113.55	3.9		3+34	3+31	#1184 #2058 6173	#1871	1730 Pennsylvania 1730 N. Hydraulic 1730 N. Hydraulic	6-15-54 5-3-55 8-31-55	7-15-52	
					4+39							
						4+66		#2292	1737 N. Hydraulic			9-12-56
5+00	118.0	113.65	4.4		4+94.5	+91.5		94-1683-7 #2211	1737 N. Hydraulic			2-7-54 8-18-52
6+00	118.3	113.75	4.5		5+53	5+50						
6+20	118.4	113.97	4.5	6+20	6+11	6+08						
					Y North							
0+00	117.9	113.37	4.5	0+00 Existing MH.								
0+28.5	117.9	113.40 out 113.50 in	4.5 4.4	0+28.5								
1+00	117.8	113.57	4.2		0+53.6		#2655		1616 E. 1612 E. 1608 E. 1614			9-25-52 11-6-52 11-6-52
2+00	117.7	113.67	4.0		1+02.3		#3121					
2+13.5	117.7	113.68 out 113.78 in	4.0 3.9	2+13.5	+54.3		#3122					
3+00	117.0	113.77	3.2		181.2		#3131		1516 E. 1614 1572 E. 1614 1508 E. 1614 1502 E. 1614			11-7-52 11-7-52 11-7-52 5-28-53 11-7-52
4+00	117.3	113.87	3.4		2+34.0		#3132					
4+09.5	117.3	113.88	3.4	4+09.5	+80.8		#3133 #2003 3134	01419		R See Below		
					Y West							
0+00	117.0	113.43	3.6	0+00 New MH.			#1663		1703			4-30-52
1+00	118.0	113.53	4.5		0+43.5		#1666		1703			4-30-52
2+00	118.0	113.63	4.4		+98.0		#1711		1715			6-24-52
2+70.0	118.3	113.70	4.6	2+70.0	1+46.0		#1712		1721			6-24-52
					+97.2		#1713		1721			6-24-52
					2+48.6							

LAT. 4, SUB. Y, #12
Line #1

Line #2

2003-01419-5128/03-1502 E 16th St N - Bowers - City Wye repair - 4" Fredco 27.8' E of MH 4+09.5 (3+79.7) 4" PVC
1 TWINGCO, 2H22, 1H45, Shallow

3123 - Top - 1602 E. 16th - 11-6-52 - E. B. Brunner
6753 - Top - 1742 N. Pennsylvania - 3-25-54 - Reynolds Hwy.
2495 - Top - 1735 N. Hydraulic - Nick Lee Jay, Jr. - 7-21-54
2292 - Top - 1731 N. Hydraulic - Joe M. Donald - 10-29-51
7649 Top 1718 N. Pennsylvania - Bennett - 8-6-58
94-1683-7 2-7-54 1737 N Hydraulic
D.L. Hit main and sewer main crew repaired and removed w/c at 5+50 and so this address on 2-8-94. NO TIVSO by O.C.T.