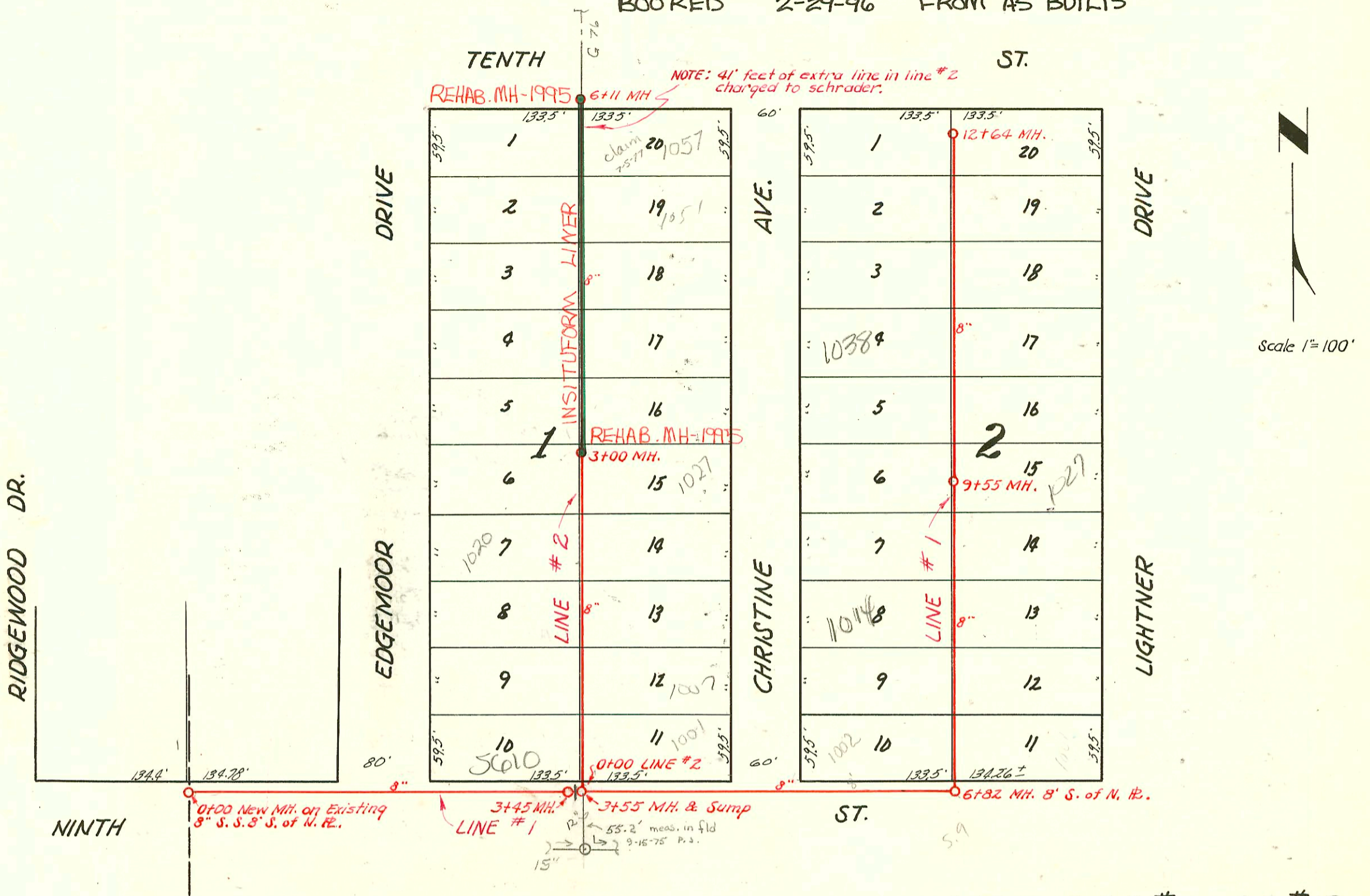
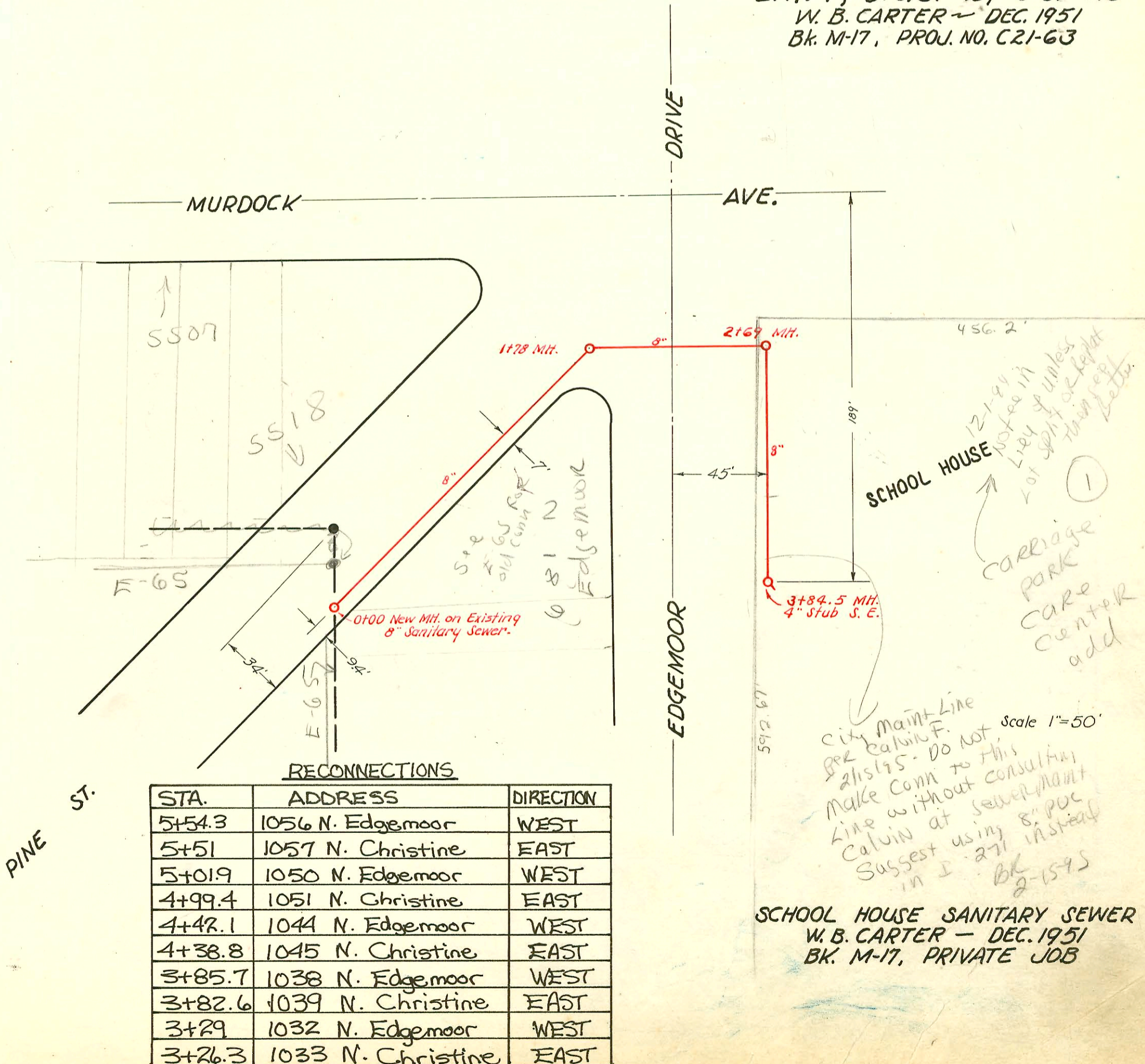


SANITARY SEWER RESPONSE PLAN
 PHASE IA
 PROJ. NO. 468-87420 (62312A)
 BUILT BY INSITUFORM PLAINS, INC.
 BOOKED 2-29-96 FROM AS BUILTS

G-45A



LAT. 7, D.C.S. #2, S.S. #12
 W. B. CARTER - DEC. 1951
 BK. M-17, PROJ. NO. C21-63



SCHOOL HOUSE SANITARY SEWER
 W. B. CARTER - DEC. 1951
 BK. M-17, PRIVATE JOB

CONSTRUCTION RECORD

SERVICE RECORD

Line #1

STATION	ELEVATION		Depth	MANHOLE	4-INCH "Y" BRANCHES		No. of Permit		House Number		DATE OF PERMITS	
	Ground	Grade			North West	South East	North West	South East	North West	South East	North West	South East
0+00	205.4	195.60	9.8	0+00 New MH.								
1+00	205.1	195.80	9.3									
2+00	202.2	196.00	6.2									
3+00	200.3	196.20	4.1									
3+45	198.5	196.31 out 186.30 in	2.2 12.2	3+45 Sump								
3+55				3+55								
4+00	198.6	186.35	12.2									
5+00	196.3	186.45	9.9									
6+00	194.4	186.55	7.8									
6+82	192.7	186.64 out 186.83 in	6.1 5.9	6+82								
7+00	192.7	186.85	5.9		7+04.5	7+01.5	#195	#682	1000 N. Christine	1001 N. Christine	2-26-52	4-1-52
					+64.5	+61.5	#196	#683	1000 N. Christine	1007 N. Christine	2-26-52	4-1-52
8+00	193.2	186.95	6.3		8+21.5	8+18.5	#197	#684	1014 N. Christine	1005 N. Christine	2-26-52	4-1-52
					+82.0	+79.0	#198	#685	1000 N. Christine	1001 N. Christine	2-26-52	4-1-52
9+00	193.4	187.05	6.4		9+41.5	9+38.5	#199	#686	1026 N. Christine	1027 N. Christine	2-26-52	4-1-52
9+55	193.6	187.11	6.5	9+55		9+98.3		#687	1033 N. Christine	Lightner		4-1-52
10+00	193.7	187.15	6.6		10+01.3		#200		1032 N. Christine	Lightner	2-26-52	
					+61.6	10+58.6	#202	#688	1032 N. Christine	1039 N. Christine	2-26-52	4-1-52
11+00	193.9	187.25	6.7		11+23	11+20	#203	#689	1044 N. Christine	1041 N. Christine	2-26-52	4-1-52
					+77.5	+74.5	#204	#690	1050 N. Christine	1055 N. Christine	2-26-52	4-1-52
12+00	193.5	187.35	6.2		12+30.5	12+27.5	#205	#691	1056 N. Christine	1057 N. Christine	2-26-52	4-1-52
12+64	193.6	187.41	6.2	12+64								
0+00	199.2	186.30	12.9	0+00 = 3+55 in Line #2	0+58.6 0+21.5	0+18.5	#692 #87	#85	5610 N. Christine	1001 N. Christine	4-17-78 5-9-55	6-17-02 2-18-52
1+00	198.9	186.40	12.5		+82.5	+79.5	#6922	#88	1008 N. Christine	1007 N. Christine	12-27-51	2-18-52
2+00	198.8	186.50	12.3		1+37.0	1+34.0	#6923	#89	1014 N. Christine	1013 N. Christine	12-27-51	2-18-52
					2+03.0	2+00	#6924	#90	1020 N. Christine	1021 N. Christine	12-27-51	2-18-52
					+60.0	+57.0	#6925	#91	1026 N. Christine	1027 N. Christine	12-27-51	2-18-52
3+00					3+22.5	3+19.5	#6926	#92	1032 N. Christine	1033 N. Christine	12-27-51	2-18-52
3+00	198.8	186.60	12.2	3+00	+80.5	+77.5	#6927	#93	1038 N. Christine	1039 N. Christine	12-27-51	2-18-52
4+00	198.8	186.70	12.1		4+37.3	4+34.3	#6928	#94	1044 N. Christine	1045 N. Christine	12-27-51	2-18-52
					+99.0	+96.0	#6929	#95	1050 N. Christine	1051 N. Christine	12-27-51	2-18-52
5+00	198.3	186.80	11.5		5+50.0	5+47.0	#6930	#96	1056 N. Christine	1057 N. Christine	12-27-51	2-18-52
6+00	198.3	186.90	11.4									
6+11	198.3	186.91	11.4	6+11								

Line #2

NOTE: All of Extra Line in Line #2 changed to Schroeder.

2002-01675-617102-1001 N Christine - A Good Pibr - tied back to clay tile w/ ferrico, replaced 10' lower end w/ 4" 40 AC, 4" fall, 1H22

Y East

0+00	199.4	191.95	7.5	0+00 New MH.								
1+00	200.4	192.25	8.1									
1+78	200.8	192.58 out 192.58 in	8.2 8.3	1+78								
2+00	200.7	192.65	8.1									
2+69.0	198.9	192.85 out 192.93 in	6.0	2+69.0								
3+00	199.1	193.05	6.0									
3+84.5	198.6	193.29	5.3	3+84.5		3+42.2						
						(4' Stub Southeast)						