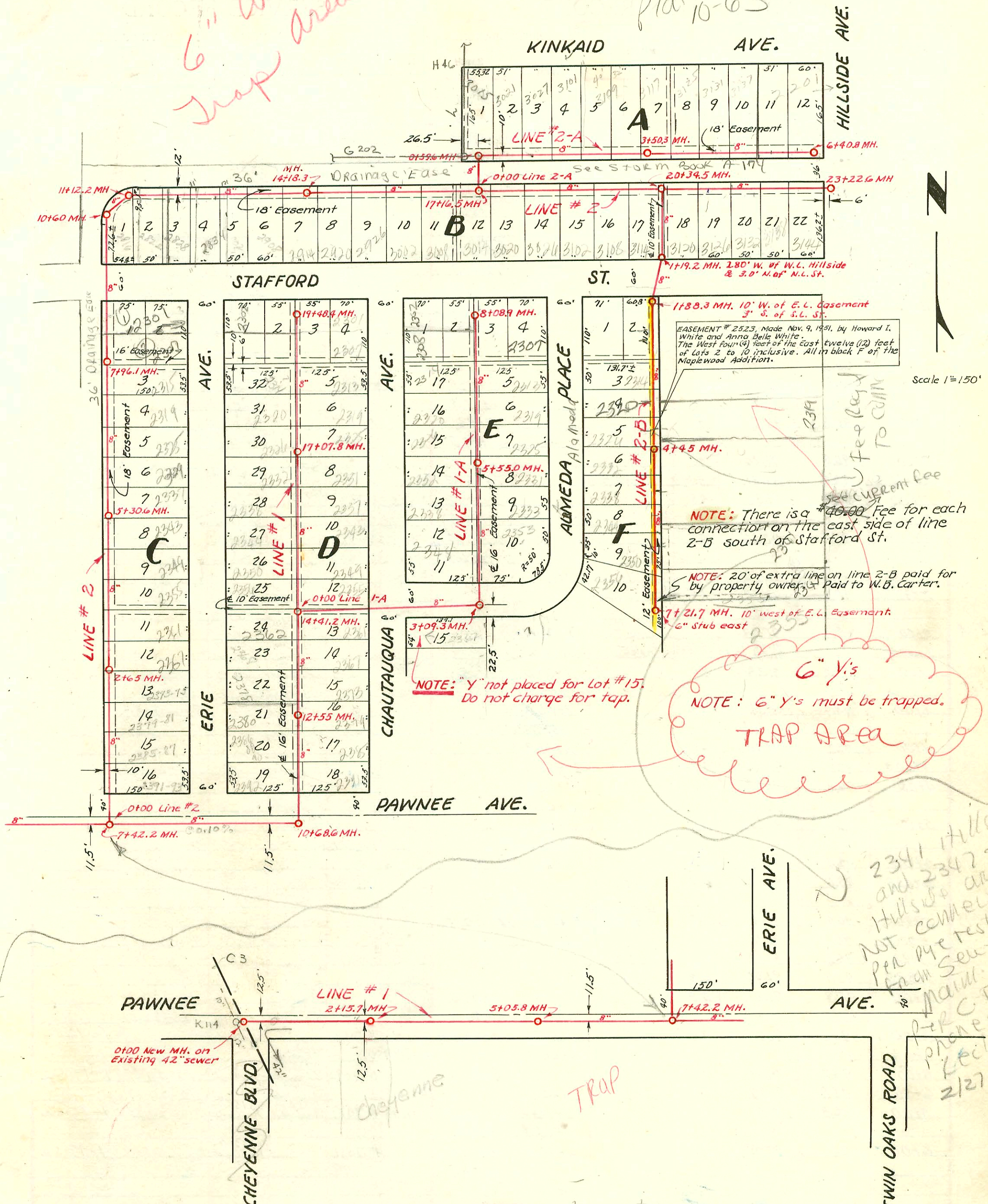


6" Wye
Trap Area

plat 10-65



2341 Hillside
and 2347's
Hillsides are
NOT connected
per my test
from sewer
main. Dig
P-R-C Twp
phone call
2/27/07

- 2003-02526 9/30/03 2331 S Alameda- Reddi - 4" PVC - new house trap
- 2002-02468 9/19/02 2307 Alameda- McClung - 4" PVC - city wye insp 63.3' S of MH 8+08.9 (7+45.5)
2 dir co, 1 H 22, new house trap, deep, 18" per foot, 6" WYE
- 2001-00240-2/2/01- 2319 S Alameda- AE Henning - 4" SCH 40, 1 TWINCO, 1 H 45, 1-Ferroc to CI @ house,
1 Ferroc to clay - Replaced aprx 10' of Line
- 2002-00567-3-1-02- 2332 S Erie - Clearwater EXC - TWIN CO, new house trap, 4" SCH 40
1/4" fall, tied back to clay tile 3' from main
- 2003-02229-8/26/03-12319 S Chautauqua - Kansas Ditching - 4" PVC - 1 TWINCO, new house trap, shallow,
64.2' N of MH 17+07.8 (17+73) city wye inspection - 6" wye, good
- # 24560-1-5-90 - McCullough - 2347 S Hillside (N/C) - (6+45.2) converted garage

LAT. 60, D.C.S., S.S. #12
W. B. CARTER - CONTRACTOR
 PROJ. NO. CZ1-47 BK. # M-11
 Jan. 17, 1952

CONSTRUCTION RECORD

SERVICE RECORD

STATION	ELEVATION		Depth	MANHOLE	6-INCH "Y" BRANCHES		No. of Permit		House Number		DATE OF PERMITS	
	Ground	Grade			North West	South East	North West	South East	North West	South East	North West	South East
Line # 1 0+00	96.8	88.40	8.4	0+00 New MH.								
1+00	97.0	88.50	8.5									
2+00	97.1	88.60	8.5									
2+15.7	97.3	88.65	8.6	2+15.7								
3+00	97.3	88.70	8.6									
4+00	97.2	88.80	8.4									
5+00	97.2	88.90	8.3									
5+05.8	97.2	88.91	8.3	5+05.8								
6+00	97.3	89.00	8.3									
7+00	97.6	89.10	8.5									
7+42.2	97.7	89.14	8.6	7+42.2								
8+00	97.8	89.20	8.6									
9+00	98.1	89.30	8.8									
10+00	98.1	89.40	8.7									
10+68.6	98.2 98.4	89.47 in 89.38 out	8.7 8.8	10+68.6								
11+00	97.4	89.62	7.8		11+42.5	11+39.5	#683	#4276	2391 R 2395 R	8-19-55	2-27-53	
					+93.0	+90.0		#4275	2377 S	4-10-51	2-27-53	
12+00	97.2	89.72	7.5		12+44.5	12+41.5	11973	#4274	2380 R	12-8-59	2-27-53	
12+55	97.1	89.78	7.3	12+55	+97.0	+94.0	C73565	#4273	2378 R	8-13-79	2-27-53	
13+00	96.9	89.82	7.1		13+50.5	13+47.5	#7271	#1718	2362 R	1-26-52	6-25-52	
14+00	96.6	89.92	6.7		14+03.0	14+00.0	#7272	#4268	2362 R	1-3-81	2-27-53	
14+41.2	96.9	89.96	6.9	14+41.2	+57.0	+54.0	#7270	#1719	2356 R	1-26-52	6-25-52	
15+00	96.7	90.02	6.7		15+11.2	15+08.2	#7272	#1720	2350 R	1-26-52	6-25-52	
					+65.2	+62.2	#7273	#1722	2344 R	1-26-52	6-25-52	
16+00	96.9	90.12	6.8		16+17.8	16+14.8	#7271	#4272	2335 R	1-26-52	2-27-53	
					+72.0	+69.0	#7272	#4271	2335 R	1-26-52	2-27-53	
17+00	97.3	90.22	7.1		17+21.0	17+18.0	#7271	#4270	2326 R	1-26-52	2-27-53	
17+07.8	97.4	90.23	7.2	17+07.8	+75.0	+72.0	#7271	#4269	2326 R	1-26-52	2-27-53	
18+00	97.8	90.32	7.5		18+30.7	18+27.7	#7279	#4281	2314 R	1-26-52	12-3-54	
					+85.0	+82.0	#966	#1782	2308 R	1-22-52	6-27-57	
19+00	98.3	90.42	7.9		19+39.3	19+36.3	#965	#5251	2302 R	4-22-52	9-5-57	
19+48.4	98.3	90.47	7.8	19+48.4					2302 R			
Line # 1-A 0+00	96.9	90.06	6.8	0+00=14+41.2 Line #1								
1+00	97.2	90.16	7.0									
2+00	97.0	90.26	6.7									
3+00	97.3	90.36	6.9		3+67.2							
3+09.3	97.1	90.37 in 90.47 out	6.7 6.6	3+09.3		3+88.4	#9833		2347 R		12-3-54	
4+00	97.1	90.56	6.5		4+21.5							
					4+78.0	4+75.0	#4267	#3486	2334 R	3-27-53	6-27-55	
5+00	96.3	90.66	5.6		5+32.2	5+29.2	#4266	#3485	2334 R	3-27-53	6-27-55	
5+55	96.7	90.72	6.0	5+55	+87.3	+84.3	#4266	#3485	2334 R	3-27-53	6-27-55	
6+00	96.5	90.76	5.7		6+42.0	6+39.0	#4269	#3484	2319 R	2-27-53	6-27-55	
					6+95.4	6+92.4	#4262	#5845	2314 R	4-2-57	7-20-53	
7+00	96.9	90.86	6.0		7+49.9	7+46.9	#4821	#5844	2307 R	4-14-53	7-20-53	
						+99.0			2852		10-14-52	
8+00	97.4	90.96	6.4		8+02.0		#3136		2302 R	11-7-52		
8+08.9	97.3	90.97	6.3	8+08.9								
Line # 2 0+00	97.6	89.26	8.3	0+00=7+42.2 in Line #1		0+71.8	#150		2391 R		2-21-52	
1+00	97.1	89.36	7.7			1+22.5						
						1+80.0						
2+00	97.1	89.46	7.6			2+30.7						
2+63.0	97.2	89.53	7.7	2+63.0		2+76.8	#7268		2367 R		1-26-52	
3+00	97.5	89.56	7.9			3+28.0	#7269		2366 R		1-26-52	
						+85.3	#7267		2355 R		1-26-52	
4+00	97.9	89.66	8.2			4+37.0	#7266		2349 R		1-26-52	
						+94.0	#7265		2343 R		1-26-52	
5+00	98.5	89.76	8.7			5+48.2	#1295		2335 R		1-26-52	
5+30.6	98.5	89.79	8.7	5+30.6		6+03.0	#7262		2331 R		1-26-52	
6+00	98.7	89.86				+54.0	#7263		2325 R		1-26-52	
						7+09.0	#7264		2325 R		1-26-52	
7+00	99.1	89.96	9.1			7+09.0	#964		2319 R		4-22-52	
7+96.1	98.8	90.06	8.7	7+96.1		+63.2	#963		2316 R		4-22-52	
8+00	98.7	90.06	8.7			8+20.2	#962		2307 R		4-22-52	
						+76.0	#961		2301 R		4-22-52	
9+00	98.7	90.16	8.6			10+31.5						
10+00	98.9	90.26	8.6									
10+60	97.5	90.32	7.2	10+60								
11+00												

NOTE: This project continues on page #51.

#7177 - W.P. - 2319 - Namula - 4-5-54 - Broad Pkg.
 #938 - Sup - 2355 - Alameda - 4-18-52 - C.R. Ledy
 #4277 - Top - 2362 - S. Chautauque - 2-27-53 - Cherry Ody. Co. R. 5447
 #7232 - Top - 2348 - S. Chautauque - 8-54 - Ledy
 5760 - 6' x 8' - 3047 - S. Kirkland - Bradford - 11-26-57
 Sup # C12738 - 2385 - S. Erie - Bradford - 2-11-69 (1+15)
 #1804 - 2314 - Chautauque - 4/6/87 - New City - 7+02.9 TAP
 4500 - Sup - 8012 - S. Kirkland - Bradford - 4-1-57
 C73565 - 2378 - S. Erie - Repair - 8-13-79