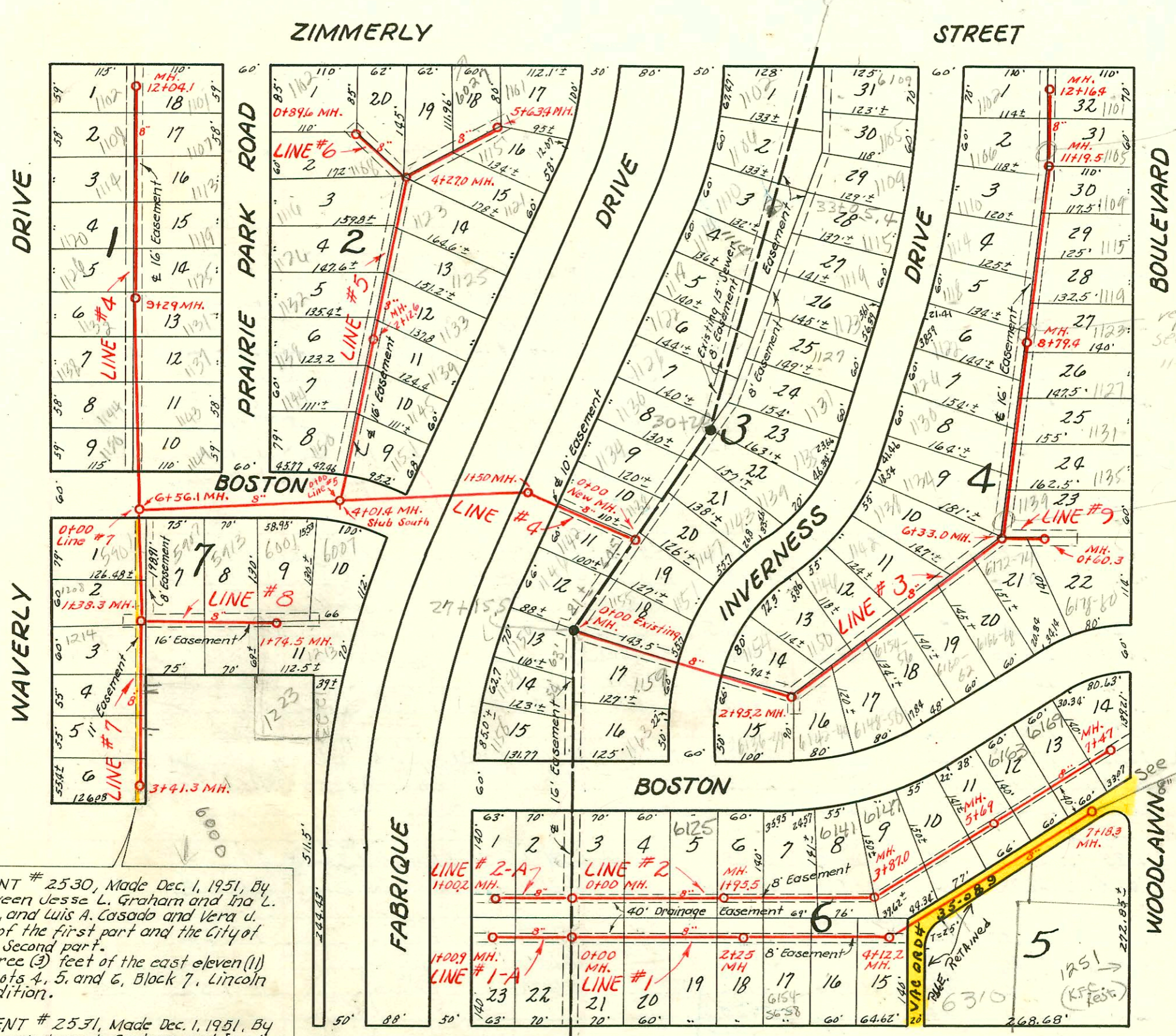


2002-01732-611902-6125 Boston - Wichita Exc. City W/e repair 48' W of MH 1495.5 (1497.5)
4" PVC - 1/2" W/CO, 2 V45, 1 H22, 1 SHALLOW

NOTE: No charge for taps in Blk. 3



repair by
Sewer Maint.
11-24-81
Scale 1"=150'

repair by
Sewer Maint.
11-24-81

repair by
Sewer Maint.
11-24-81

EASEMENT # 2530, Made Dec. 1, 1951, By and between Jesse L. Graham and Ina L. Graham, and Luis A. Casado and Vera U. Casado, of the first part and the City of Wichita, Second part.
West three (3) feet of the east eleven (11) feet of Lots 4, 5, and 6, Block 7, Lincoln Hills Addition.

EASEMENT # 2531, Made Dec. 1, 1951, By and between Jesse L. Graham and Ina L. Graham of the first part and the City of Wichita, of the second part.
West three (3) feet of the east eleven (11) feet of Lots 1, 2, and 3, Block 7, Lincoln Hills Addn.

- HARRY ST.
- # 4636 Tap - 1101 Inverness - Brodie Pelly Co. - 3-26-53
 - # 4637 Tap - 1105 Inverness - Brodie Pelly Co. - 3-26-53
 - # 4638 Tap - 1109 Inverness - Brodie Pelly Co. - 3-26-53
 - # 4639 Tap - 1115 Inverness - Brodie Pelly Co. - 3-26-53
 - # 4640 Tap - 1119 Inverness - Brodie Pelly Co. - 3-26-53
 - # 4641 Tap - 1123 Inverness - Brodie Pelly Co. - 3-26-53
 - # 4642 Tap - 1127 Inverness - Brodie Pelly Co. - 3-26-53
 - # 4643 Tap - 1131 Inverness - Brodie Pelly Co. - 3-26-53
 - # 4363 Tap - 1102 Fabrique - Jones Pelly Co. - 3-6-53
 - 2002-02003 # 4364 Tap - 1106 Fabrique - Jones Pelly Co. - 3-6-53
 - 2002-03162 # 4365 Tap - 1110 Fabrique - Jones Pelly Co. - 3-6-53
 - # 4366 Tap - 1114 Fabrique - Jones Pelly Co. - 3-6-53
 - # 4367 Tap - 1118 Fabrique - Jones Pelly Co. - 3-6-53
 - # 4444 - 1130 Fabrique - 3-14-53 - Simmons Pelly Co.
 - # 4445 - 1134 Fabrique - 3-14-53 - Simmons Pelly Co.
 - # 4446 - 1138 Fabrique - 3-14-53 - Simmons Pelly Co.
 - # 4447 - 1142 Fabrique - 3-14-53 - Simmons Pelly Co.
 - # 1584 - Tap - 6157-59 E. Boston - 6-11-53 - Brodie Pelly Co.
 - # 1571 - Tap - 6163-65 E. Boston - 6-10-52 - Brodie Pelly Co.
 - # 13705 - Tap - 1154 - 1-8-53 - Simmons Pelly Co.
 - # 3708 - 1158 - 1-8-53 - Simmons Pelly Co.
 - # 3709 - 1150 - 1-8-53 - Simmons Pelly Co.
 - # 4179 - Tap - 1044 Fabrique - 2-21-53 - D. A. Smith
 - # 4577 - Tap - 6142-44 E. Boston - 3-24-53 - Simmons Pelly Co.
 - # 5047 - Tap - 1032 Fabrique - 5-8-53 - D. A. Smith
 - # 5148 - Tap - 1038 Fabrique - 5-8-53 - D. A. Smith
 - # 5348 - Richard R. Pelly - 1-20-53 - Fabrique
 - # 5351 - Tap - Simmons Pelly - 12-6 Fabrique
 - # 5352 - Tap - Simmons Pelly - 1135 Inverness
 - # 5658 - Simmons Pelly - 1139 Inverness
 - # 6233 - Tap - 5900 E. Harry - 8-20-53
 - # 6616 - Tap - 1114 Inverness - 10-3-53 - Simmons Pelly Co.
 - # 6742 - Tap - 1123 Woodlawn - 10-21-53 - Simmons Pelly Co.
 - # 6617 - Tap - 1118 Inverness - 10-3-53 - Simmons Pelly Co.
 - 10692 Tap # 6326 E. Harry - 7-6-58 - 6+39.3
 - 20587 Tap # 6326 E. Harry - 5-3-58 - 6+39.3
- (sealed off from main 8' dia of w/e and 112' from main will need cover for north side)
- LAT. 7, SUBMAIN 3, W.I.S.**
W. B. CARTER - CONT.
BK. # M-14, PROJ. NO. C21-68
Jan. 25, 1952
- Plot 11-60

CONSTRUCTION RECORD

SERVICE RECORD

STATION	ELEVATION		Depth	MANHOLE	4-INCH "Y" BRANCHES		No. of Permit		House Number		DATE OF PERMITS	
	Ground	Grade			North West	South East	North West	South East	North West	South East	North West	South East
Line #1 0+00	129.0	123.22	5.8	0+00 New MH.		0+19.2		# 319		6130-32 E. Harry		3-12-52
1+00	130.4	123.42	7.0			+82.5		# 7196		6142-44 E. Harry		1-24-52
2+00	130.7	123.62	7.1			1+46.0		# 7195		6145-50 E. Harry		1-24-52
2+25	130.8	123.67	7.1	2+25	4" SCH 40	2+06.5		2000-01267		6154-56-58 E. Harry		5-23-00
3+00	131.0	123.82	7.2			3+25.4		# 7308		6152-64-66 E. Harry		1-28-52
4+00	131.7	124.02	7.7			+86.0						
4+12.1	132.0	124.04	8.0	4+12.2		4+77.0		C 4660		6310 E. Harry		8-29-67
5+00	132.5	124.24	8.3			5+53.4		5616		6310 E. Harry		4-14-82
6+00	133.6	124.44	9.2			6+16.4		2619		6251 S. Woodlawn		9-12-90
7+00	134.1	124.64	9.5			+89.7						
7+18.3	134.1	124.66	9.3	7+18.3								
Line #2 0+00	139.3	123.44	5.9	0+00 New MH.	0+17.0			# 1629		6113-15 E. Boston		6-13-52
1+00	131.1	123.64	7.5		+87.0			# 4050		6119-21 E. Boston		2-6-53
1+95.5	130.8	123.83	7.0	1+95.5	1+46.2			2002-01732		6123-27 E. Boston	see top next pg	6-19-92
2+00	130.9	123.84	7.1		2+04.0			# 4021		6123-27 E. Boston		2-6-53
3+00	131.5	124.04	7.5		+64.0			# 1628		6131-33 E. Boston		6-13-52
3+87.0	131.7	124.21	7.5	3+87.0	3+133.5			# 1627		6135-37 E. Boston		6-13-52
4+00	131.8	124.24	7.6	4+00	4+12.0			2000-01306		6141-45 E. Boston		5-30-00
5+00	132.7	124.44	8.3		+91.5			# 1572		6147-49 E. Boston		6-10-52
5+68.0	133.6	124.58	9.0	5+68.0	5+59.2			# 1583		6153-55 E. Boston		6-11-52
6+00	134.1	124.64	9.5		6+25.0			2000-02409		6169-671 R E. Boston		11-3-00
7+00	135.3	124.84	10.5		+77.0			# 1570		1201-39 E. Boston		6-10-52
7+47.0	135.8	124.93	10.9	7+47.0	7+35.2			# 1567		1201-39 E. Boston		6-10-52
Line #1-A 0+00	139.0	123.22	5.80	0+00 = 0+00 in Line #1		0+16.5		# 320		6124-26 E. Harry		3-12-52
1+00	140.4	123.42	7.0			+86.8		# 526		6119-28 E. Harry		3-24-52
1+00.9	140.4	123.42	7.0	1+00.9								
Line #2-A 0+00	139.3	123.44	5.9	0+00 = 0+00 in Line #2	0+14.1			# 2782		6107-9 E. Boston		10-6-52
1+00					+86.3			# 3306		1202-4 E. Boston		11-21-52
1+00.2	130.8	123.64	7.2	1+00.2								
Line #3 0+00	132.7	126.72	6.0	0+00 Existing MH.	0+22.1	0+25.1						
1+00	136.2	127.02	9.2									
2+00	139.7	127.32	12.4			2+19.1		# 5755		6131-38 E. Boston		7-9-53
2+95.2	138.7	129.60 Out	9.1	2+95.2								
3+00					3+17.0	3+20.0		# 2381		1154 Inverness		9-4-52
4+00	138.1	129.92	8.2		+62.9			# 4878		6148-50 E. Boston		3-24-53
5+00					3+78.0			# 2382		1150 Inverness		9-4-52
6+00	137.3	130.22	7.1		4+29.3	4+89.5		# 2383		1146 Inverness		9-4-52
6+33.0	140.6	130.61 in 133.61 Out	10.0 7.0	6+33.0	+86.5	4+89.5		# 6274		6160-62 E. Boston		8-25-53
7+00	142.6	133.82	8.8		5+71.3	5+46.9		# 4107		6166-68 E. Boston		2-14-53
8+00	143.8	134.12	9.7		6+10.0	6+10.0		# 2777		1138 Inverness		8-25-53
8+79.4	144.8	134.34 in 137.34 Out	10.5 7.5	8+79.4	6+51.2	6+48.2		# 4108		6172-74 E. Boston		2-14-53
9+00	145.2	137.42	7.8		6+48.2	6+48.2		# 6278		1134 Inverness		8-25-53
10+00	146.9	137.72	9.2		7+36.2	7+09.5		# 6279		1129 Inverness		8-25-53
					7+72.5	7+09.5		# 6280		433 Inverness		8-25-53
					7+97.2	7+72.5		# 7067		6130 Inverness		11-27-53
					8+33.1	8+33.1		# 7066		1131 Woodlawn		10-21-53
					8+91.4	8+33.1		# 7065		1126 Inverness		11-27-53
					9+21.3	8+91.4		# 6741		1127 Woodlawn		10-21-53
					9+51.9	9+51.9		# 7065		1122 Inverness		11-27-53
					9+87.8	9+87.8		# 6023		1119 Woodlawn		7-30-53

NOTE: This project continues on page 53.

97-16847-1
 # 142 - Inf - (6000) E. Harry - 2-21-52 - Oray Brn. (# 2000 special fee paid 2-21-52).
 # 7194 - Inf - 6154-56-58 E. Harry - 1-24-52 - Brude Ally Co.
 # 7309 - Inf - 6170-72-74 E. Harry - 1-28-52 - Simmons Pllg Co
 # 2 - Inf - 6136-38 E. Harry - 2-12-52 - Simmons Pllg Co
 # 2069 - Top - 1143 Inverness - 8-5-52 - Simmons Pllg Co
 # 2070 - Top - 1117 Inverness - 8-5-52 - Simmons Pllg Co
 # 2071 - Top - 1151 Inverness - 8-5-52 - Simmons Pllg Co
 # 2072 - Top - 1155 Inverness - 8-5-52 - Simmons Pllg Co
 # 2073 - Top - 1157 Inverness - 8-5-52 - Simmons Pllg Co
 # 2109 - Top - 1163 Inverness - 8-9-52 - Simmons Pllg Co