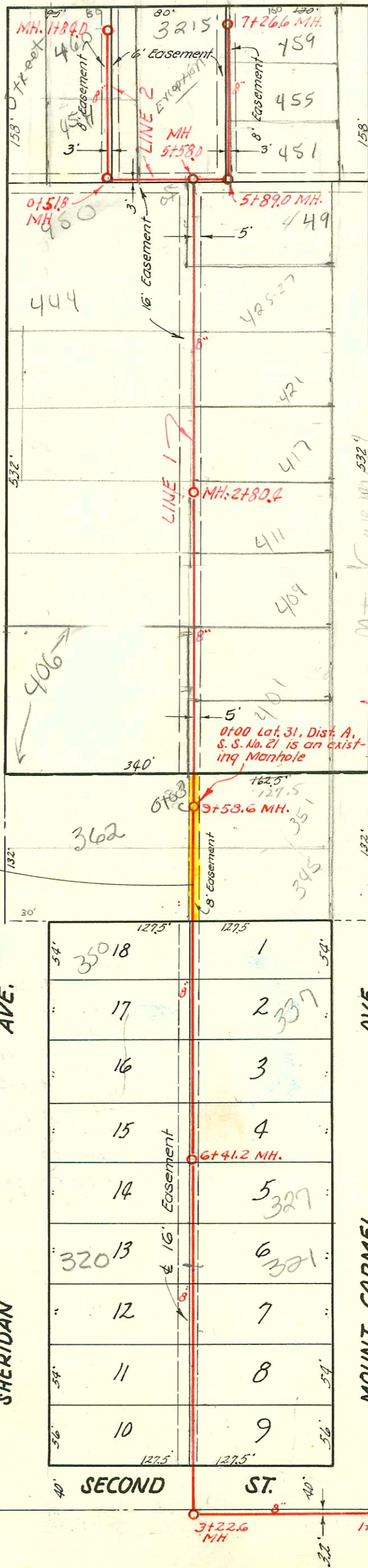
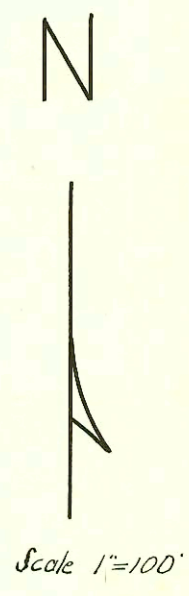


ST. LOUIS



**EASEMENT # 2541**, Made Dec. 31, 1951, By and between E. C. M. Corporation, Inc. of the first part and the City of Wichita, of the second part. The west eight (8) feet of the east 162 1/2' of the North one (1) acre of the south five (5) acres of the West twenty (20) acres of the Northeast Quarter of Section 24, Township 27, South, Range 1, West of the 6<sup>th</sup> P. M.

See Plat 7-51



LAT. 31, DIST. A, S.S. 21  
 W. B. CARTER  
 BK. NO. JF. 64, PROJ. # C 22-1  
 NOV. 1, 1952.

THIRD ST.

LAT. 30, DIST. A, S.S. # 21  
 W. B. CARTER - CONT.  
 BK. # JF 61, PROJ. # C 21-77  
 Jan. 29, 1952

CONSTRUCTION RECORD

SERVICE RECORD

LINE NO.

STATION	ELEVATION		Depth	MANHOLE	4-INCH "Y" BRANCHES		No. of Permit		House Number		DATE OF PERMITS	
	Ground	Grade			North West	South East	North West	South East	North West	South East	North West	South East

LAT. 31, DIST. A, S.S. 21

1.

0+0	116.3	112.77	3.5	Existing MH.	0+09.8							
1+0	117.2	112.87	4.3		1+06.8	1+03.8	#1178	#8927	406 N. Sheridan	406 N. Mt. Carmel	4-24-02	2-25-64
2+0	118.1	112.97	5.1		1+57.4	1+54.4						
					2+08.6	2+05.6	#1177	12446	406 N. Sheridan	406 N. Mt. Carmel	6-14-54	4-4-60
	118.4	113.05	5.4	2+80.4	2+58.5	2+55.5						
3+0	118.4	113.07	5.3		3+05.7	3+02.7	10421	#3823	436 N. Sheridan	436 N. Mt. Carmel	3-8-84	10-1-59
					3+59.5	3+56.5	#1176	#3226	440 N. Sheridan	440 N. Mt. Carmel	6-14-54	2-1-55
4+0	120.8	113.17	7.6		4+09.0	4+06.0	#1056100		444 N. Sheridan		6-24-76	
					4+59.7	4+56.7						
5+0	122.5	113.27	9.2			Y South						
	123.2	113.33	9.9			5+58.0						
	123.3	113.43	9.8			5+89.0						
	123.3	113.46	9.8			Y East						
6+0	123.2	113.58	9.6			6+10.4		#392	451 N. R. Mt. Carmel		10-7-83	3-22-54
						6+64.2		#393	453 N. R. Mt. Carmel		3-22-54	
7+0	121.3	113.68	7.6			7+05.1		#394	459 N. R. Mt. Carmel		10-1-86	3-22-54
	120.6	113.71	6.9	7+26.6								

2.

0+0	123.2	113.43	9.8	0+00 = 5+58.0 in Line #1		Y South						
	122.0	113.48	8.5		0+56.8	0+46.5	#278517		450 N. R. Mt. Carmel		5-28-92	
	121.2	113.58	8.2		0+76.0	Y East	#6112				5-11-53	
1+0	121.2	113.63	7.6		1+17.4							
						1+25.5	#3119		5+15 N. R. Mt. Carmel			1-5-52
					1+67.5							
	120.8	113.72	7.1	1+84.0								

0+00	116.7	111.71	5.0	Existing MH.								
1+00	116.8	111.81	5.0									
1+62.9	116.7	111.87	4.8	1+62.9								
2+00	116.7	111.91	4.8									
3+00	116.6	112.01	4.6									
3+22.6	116.6	112.04	4.6	3+22.6	3+86.9	3+83.9	12990	#41884	5210 W. 2nd	309 R	7-15-60	11-3-72
4+00	116.5	112.21	4.3		4+37.7	4+34.7	#1062	#3498	308 N. Sheridan	309 R	5-28-54	12-12-52
					4+92.1	4+89.1	#5500	#3499	314 N. Sheridan	315 N. Mt. Carmel	12-12-52	12-12-52
5+00	117.3	112.31	5.0		5+46.0	5+43.0	#3501	#1784	320 N. Sheridan	321 N. Mt. Carmel	12-12-52	7-2-52
					5+97.7	5+94.7	#1746	#1746	327 N. Sheridan	327 N. Mt. Carmel	6-9-54	6-28-52
6+00	116.7	112.41	4.3		6+00.7		#3502		336 N. Sheridan	337 N. Mt. Carmel	12-12-52	
6+41.2	117.1	112.45	4.7	6+41.2	6+54.8	6+51.8	#41	#2016	332 N. Sheridan	333 N. Mt. Carmel	2-13-52	7-29-52
7+00	116.7	112.51	4.2		7+08.3	7+05.3	#110	#1785	337 N. Sheridan	338 N. Mt. Carmel	2-13-52	7-2-52
					7+62.4	7+59.4	#39	#1786	344 N. Sheridan	345 N. Mt. Carmel	2-13-52	7-2-52
8+00	116.3	112.61	3.7		8+16.5	8+13.9	#38	#1789	350 N. Sheridan	351 N. Mt. Carmel	2-13-52	6-9-52
					8+67.6	8+64.6	#2407		345 N. Sheridan	346 N. Mt. Carmel		9-8-52
9+00	116.7	112.71	4.0		9+14.6		#7260		362 N. Sheridan		1-26-52	
						9+30.1	#2408		351 N. Mt. Carmel			9-8-52
9+58.6	116.5	112.77	3.7	9+58.6								

SWR 2002-01918 7/12/02 406 N Sheridan (New Home) Mies - 4" 40 PVC Donut to wye  
 106.8' N of MH0100 (1+06.8) shallow - 1 twin co, 1V22, 1V45, 3H45  
 2003-03268 12/15/03 337 N Mt Carmel - A New Dawn - 4" 40 PVC Replace all but lower 4' 1/4" fall shallow  
 4" twin CO @ house - NO Bends - NO alley

#392 - NE. 416 418 N. Sheridan 6-20-80 Jim Souers - (169' N of 0+00 top)  
 #2126 - Top - 3202 W. 2nd - 8-11-52 - Reynolds P. Co. (1+95.7) 92-7860 7. 5/28/92 454 N. Sheridan - Clear -  
 #1663 - Top - 425 N. Mt. Carmel - 8-5-54 - Joe McDonald  
 #1178 - Top - 406 N. Sheridan - 6-14-54 Joe McDonald  
 21890 #7461 - Top - 460 N. Sheridan - 1-27-54 Joe McDonald 11-10-88 - Souers - (1+42)  
 #3537 - Top - 453 N. Sheridan - 2-21-55 Joe McDonald  
 #1204 - Top - 449 N. Mt. Carmel - 6-13-58 Reynolds P. Co. (5+16.0)  
 1937 #11981 - Top - 411 N. Mt. Carmel - 12/15/59 21254 top 55' 9" 4" 40 DR 35