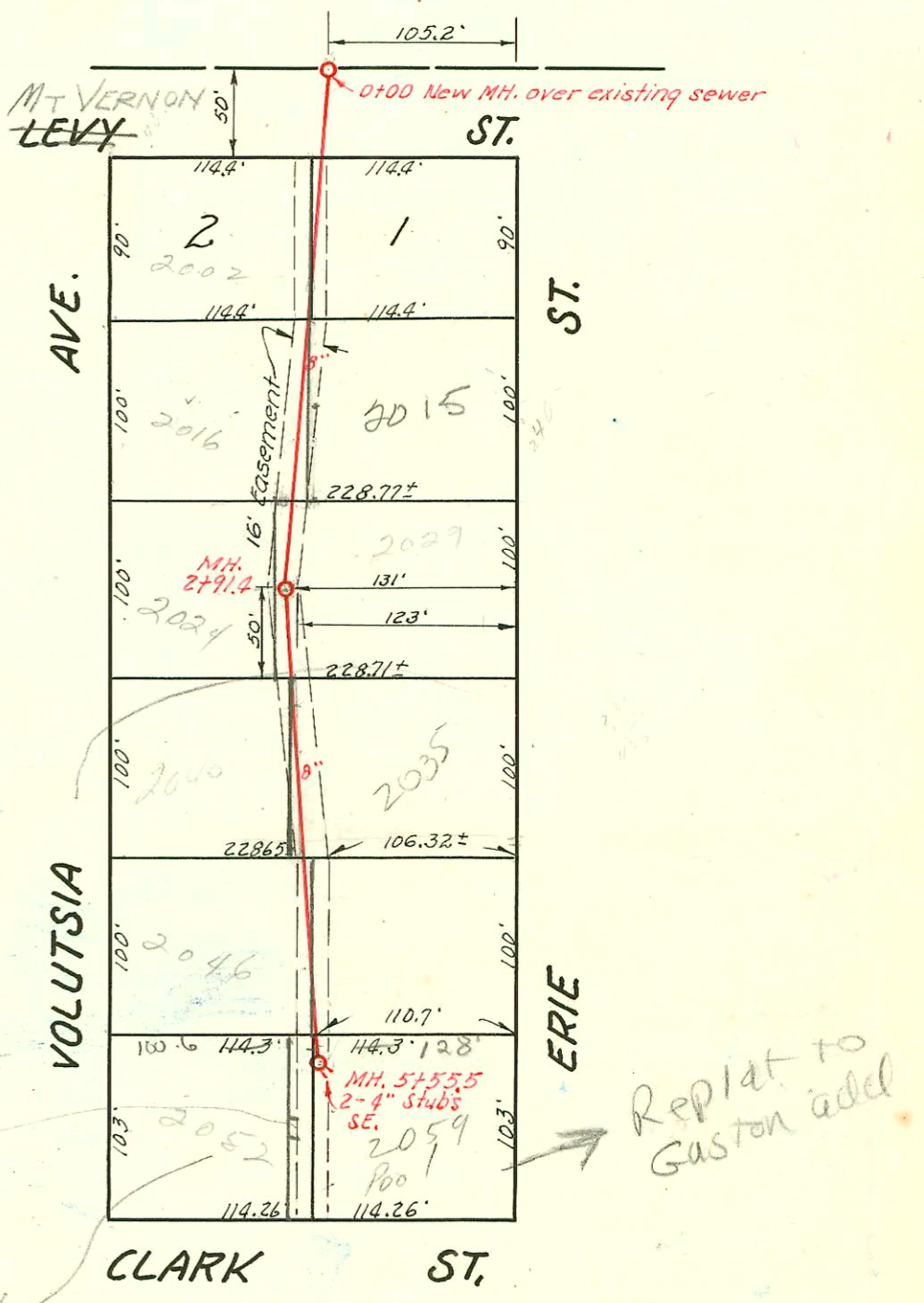
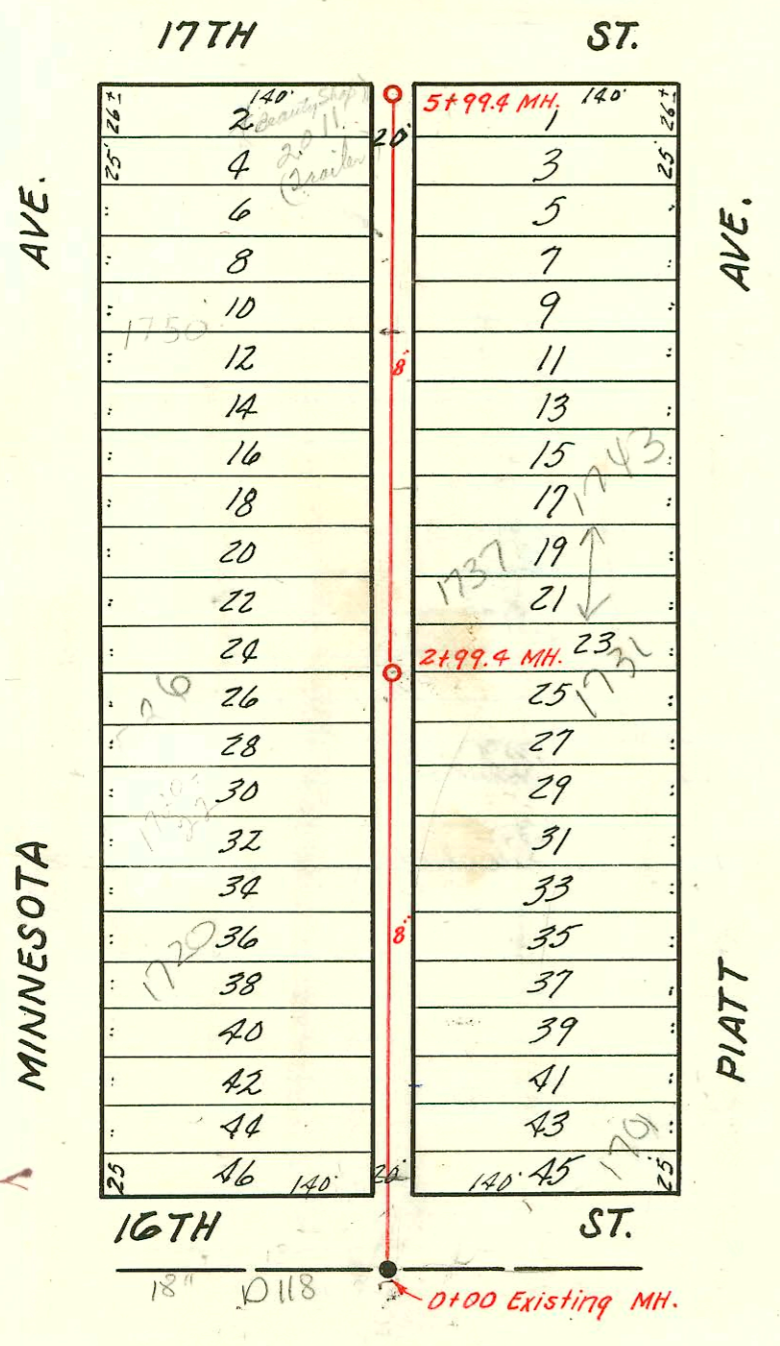


LAT. 5, DIST. Y, S. S. #12
W. B. CARTER - CONTR.
Bk. # JT. 60, PROJ. # CZ1-76
Feb. 19, 1952



2002-03012-117102-2059 S ERIE - Roto Rooter
Pipeburst replacement, ITWIN CO, CITY
repair MH stub - 4" PVC

2001-00376-2/21/01-2035 S ERIE ST - Dale's Plbg
Pipebursting Replacement - 4" Polyethylene SPRIT, 3 TWIN CO
2 H22, 2 KICKOUTS, 1 V45, 6 H45, MISSION TO CLAY 3'
from main

LAT. 6, SUB. Y, S.S. #12
W. B. CARTER - CONTR.
Bk. # JT 60, PROJ. # CZ1-83
Feb. 19, 1952

This lot does not appear to border ease where sewer line connects to city main
Bk 6-900

Replat to Gaston add

LAT. 5, D.C.S. #2, S.S. #12
W. B. CARTER
BK. # JT. 65, PROJ. NO. CZ1-38
OCT. 29, 1952

