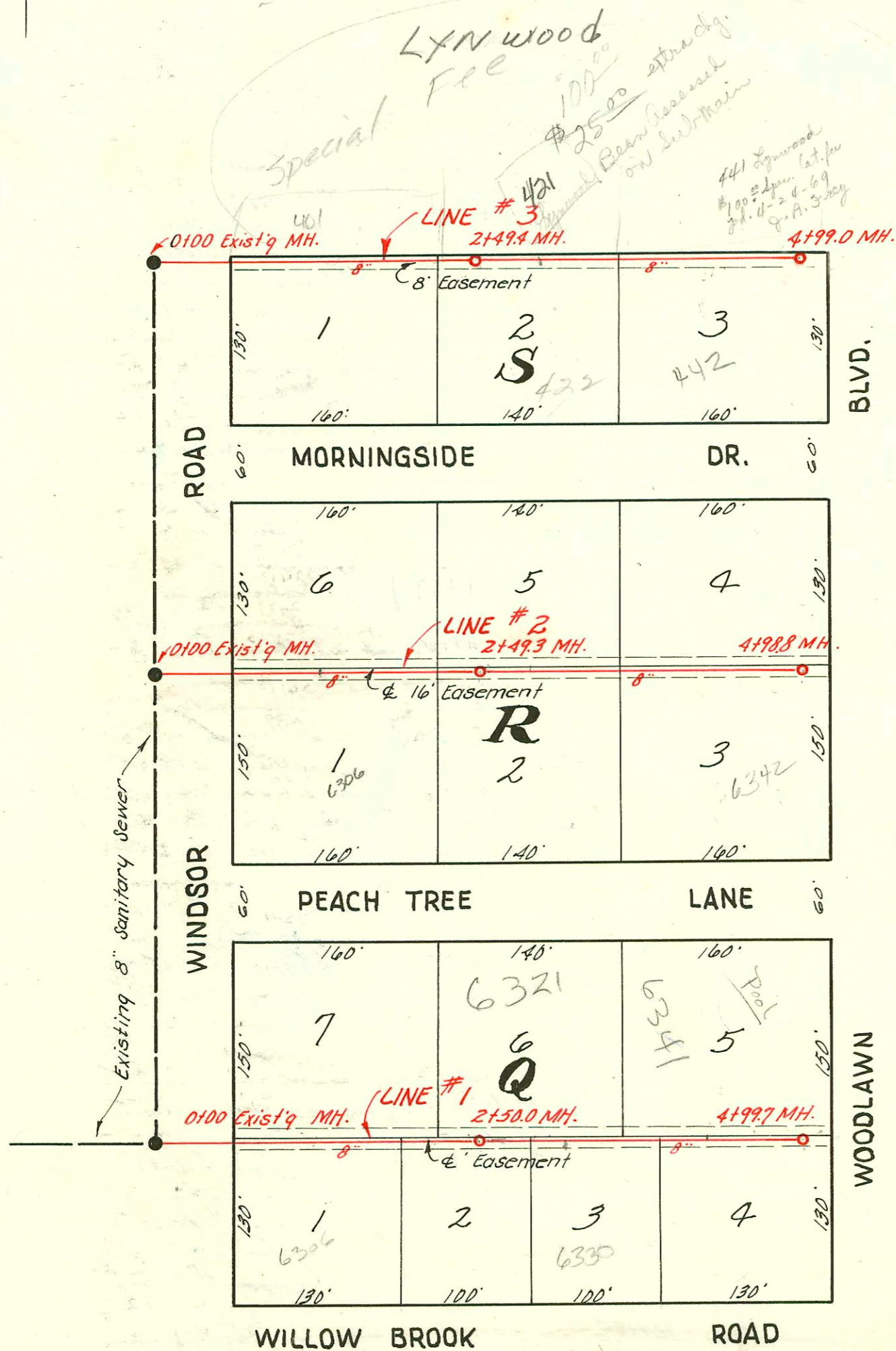


SCALE 1"=100'

LAT. 1, DIST. 13, S.S. #12  
 DIAMOND ENGINEERING CO.-CONT.  
 BK. # JT. 63. PROJ. NO. C21-75  
 March 5, 1952



Scale 1"=100'

2003-02400-9/15/03-2605 E Audrey  
 Wichita Exc- 2Vaa, 1Haa, ITWIN CO,  
 Replaced entire line- city w/ve repair  
 4" Predco 60'E of MH 51082(4+48.2)

#25<sup>00</sup> Special Fee paid 401 Lynwood. Hensley Enterprises Rec. #41171 4-27-60  
 C 2559-2612 E 21st Frederick Bltz 4-5-67-top (6+10.0)  
 #3107 - Top - 6341 Peach Tree Lane - Mitchell & Hensley (4799.7 W.)  
 #414 - Top into private line - 6307 Willowbrook - 3-24-54 - Jack Durban (Convent)  
 #4372-top - 441 Morningside - Mitchell & Hensley  
 Rec. #6609 \$2500 paid on 421 Lynwood Blvd - Distinctive Homes Inc. 6-23-55  
 7262 Top 421 Lynwood Mitchell & Hensley 6-23-54  
 12709 Top 401 Lynwood Hensley 4-28-60 (17+2) line 3  
 Rec. #32588 \$100.00 Lat. fee paid - 441 S. Lynwood Blvd (J.A. Gray 4-24-69)  
 #60878 B 422 Morningside 7-25-80 (Bureau)

LAT. 10, D.C.S. #2, S.S. #12  
 W. B. CARTER ~1952  
 PROJ. NO. C21-88  
 BK. NO. JT61  
 3-27-52

