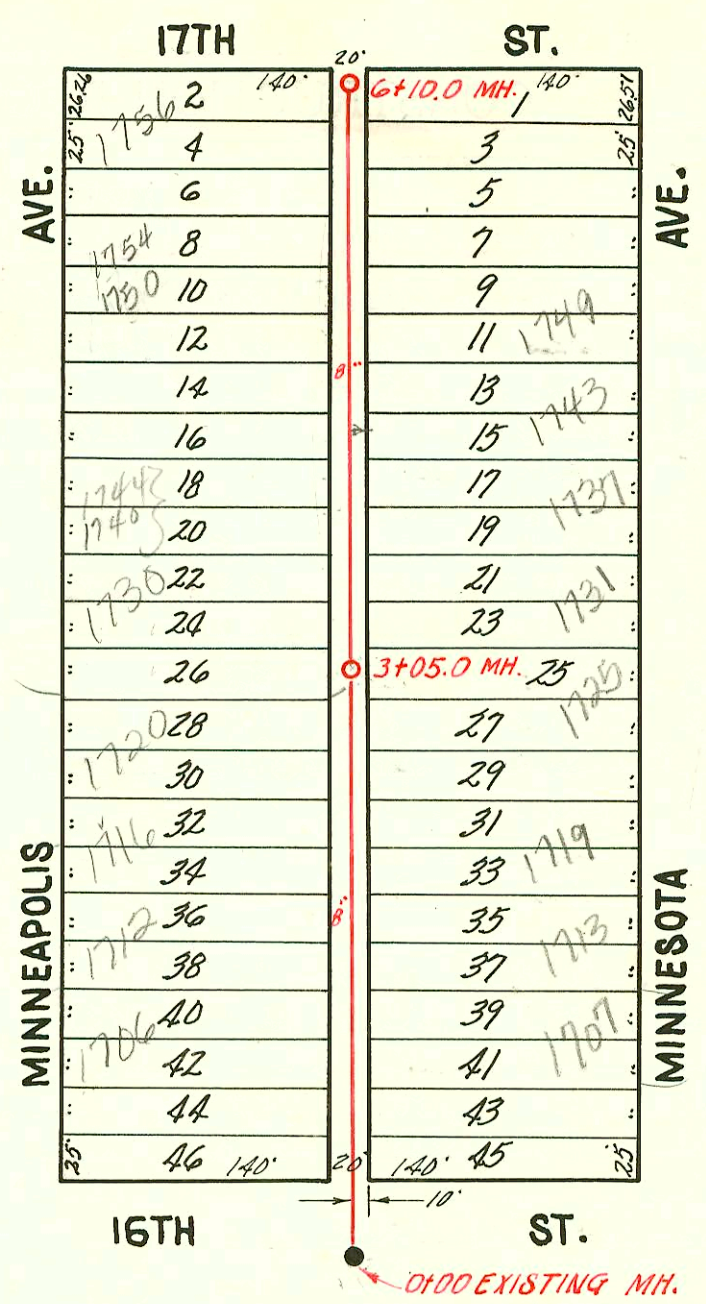
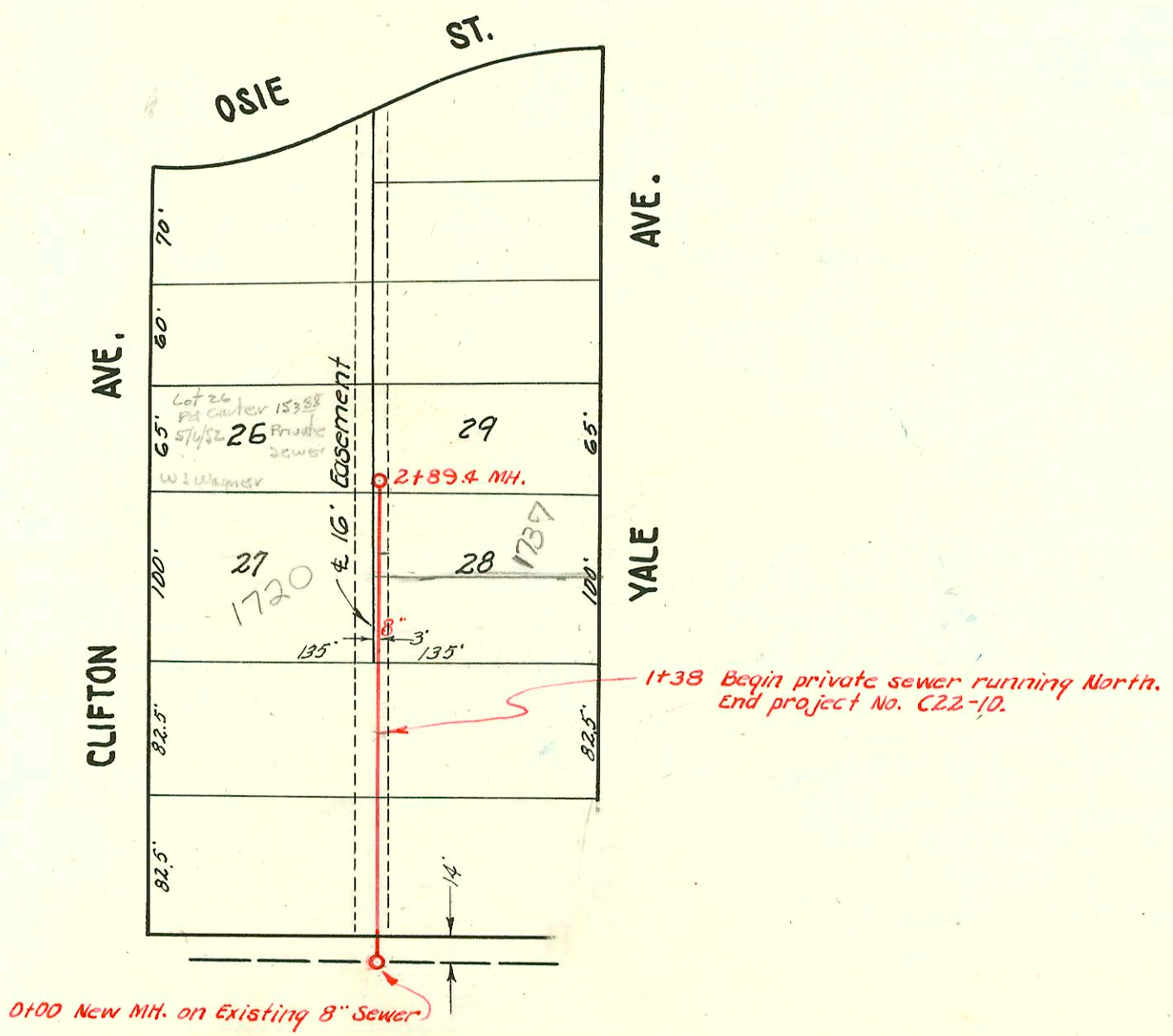


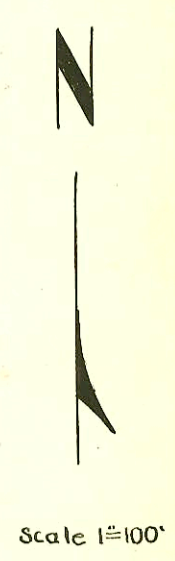
**LAT. 7, SUB. Y, S.S. NO. 12**  
 W. B. CARTER - MARCH, 1952  
 Bk. # JT. 64, PROJ. NO. C22-2



**LAT. 8, SUB. Y, S.S. NO. 12**  
 W. B. CARTER - APRIL, 1952  
 BK. JT. 63, PROJ. NO. C22-22



**LAT. 12, SUB. W, S.S. NO. 12**  
 W. B. CARTER, - APRIL, 1952  
 STA. 0+00 TO STA. 1+38, PROJECT NO. C22-10  
 STA. 1+38 TO STA. 2+89.4, PRIVATE JOB  
 BK. JT 59



CONSTRUCTION RECORD

SERVICE RECORD

LAT. 7, SUB Y.

STATION	ELEVATION		Depth	MANHOLE	4-INCH "Y" BRANCHES		No. of Permit		House Number		DATE OF PERMITS	
	Ground	Grade			North West	South East	North West	South East	North West	South East	North West	South East
0+00	117.3	112.97	4.3	0+00 Existing MH	+90	0+90.7	#3369		1602 N. R		1-12-95	
1+00	117.3	113.07	4.2		+17.7	1+14.7	#3370		1607 N		12-2-52	4-6-50
2+00	117.4	113.17	4.2		+50.9	2+01.7	#3370		1608 N		12-2-52	5-12-52
3+00	117.4	113.27	4.1		+69.2	2+01.7	#3370		1610 N		12-2-52	4-11-95
3+36.8	117.6	113.31	4.3	3+36.8	+17.5	2+51.1	#3370		1613 N		12-2-52	3-28-52
4+00	117.6	113.37	4.2		+154.1	4+01.3	#3370		1619 N		10-28-54	6-23-52
5+00	117.5	113.47	4.0		+78.4	5+01.0	#3370		1625 N		3-3-54	3-28-52
6+00	117.9	113.57	4.3			6+01.0	#3370					
6+75.1	117.9	113.65	4.3	6+75.1		6+01.0	#3370					

LAT. 8, SUB. Y, S. S. #12

0+00	117.6	112.26	5.3	0+00 Existing MH		0+52.8	#6029		1700 N		5-8-56	8-1-53
1+00	118.3	112.36	5.9			1+01.2	#714		1701 N		5-8-56	
2+00	118.5	112.46	6.0			2+01.7	#6884		1712 N		5-20-58	
3+00	118.9	112.56	6.3			3+00.6	#3583		1719 R		12-22-52	
3+105.0	118.9	112.57	6.3	3+105.0		3+105.0	#1048		1725 N		4-29-52	
4+00	118.8	112.66	6.1			4+00.4	#1049		1731 N		4-29-52	
5+00	118.6	112.76	5.8			5+01.7	#1051		1740 N		10-24-68	4-29-52
6+00	118.9	112.86	6.0			6+01.0	#1052		1743 N		4-29-52	
6+10.0	119.1	112.87	6.2	6+10.0		6+10.0			1749 N		4-29-52	

LAT. 12, SUB. W, S. S. NO. 12

0+00	136.1	125.73	10.4	0+00 New MH		0+41.0	#1464		1730 S		6-2-52	
1+00	138.0	126.13	11.9			1+19.2	#1465	#1184	1749 S		6-2-52	5-10-52
2+00	139.9	126.53	13.4			2+00.8	#2252	#100583	1750 S		8-21-52	5-6-17-80
2+89.4	131.3	126.89	4.4	2+89.4		2+84.0	#1282	#100583	1750 S		5-19-52	5-20-52

C11071 - Top 1750-54 Minneapolis - 10-24-68 - Geo Griffin (5+14)

- #5614 - Top - 1707 N. Minnesota - 6-20-53 - Reynolds P. Lly. Co. Inc
- #1185 - Top - 1711 N. Minnesota - 6-15-54 - M.E. Phipps
- #2168 - Top - 1731 S. Yale - 10-9-54 - Army Team
- #3586 - Top - 1640 1/2 N. Minneapolis - 1-28-55 - Richard Housley
- #6312 - Top - 1658 N. Minneapolis - 9-12-55 - Baker Ply.
- #3099 - Top - 1742 N. Minneapolis - 11-19-56 - Reynolds
- #84666 - Top - 1650 N. Minneapolis - 11-29-65 - Geo Griffin (5+74.3)
- #5772 - Top - 1658 N. Minneapolis - Geo Griffin - 6-6-66

#2999 1642 N. Minneapolis 12-17-54