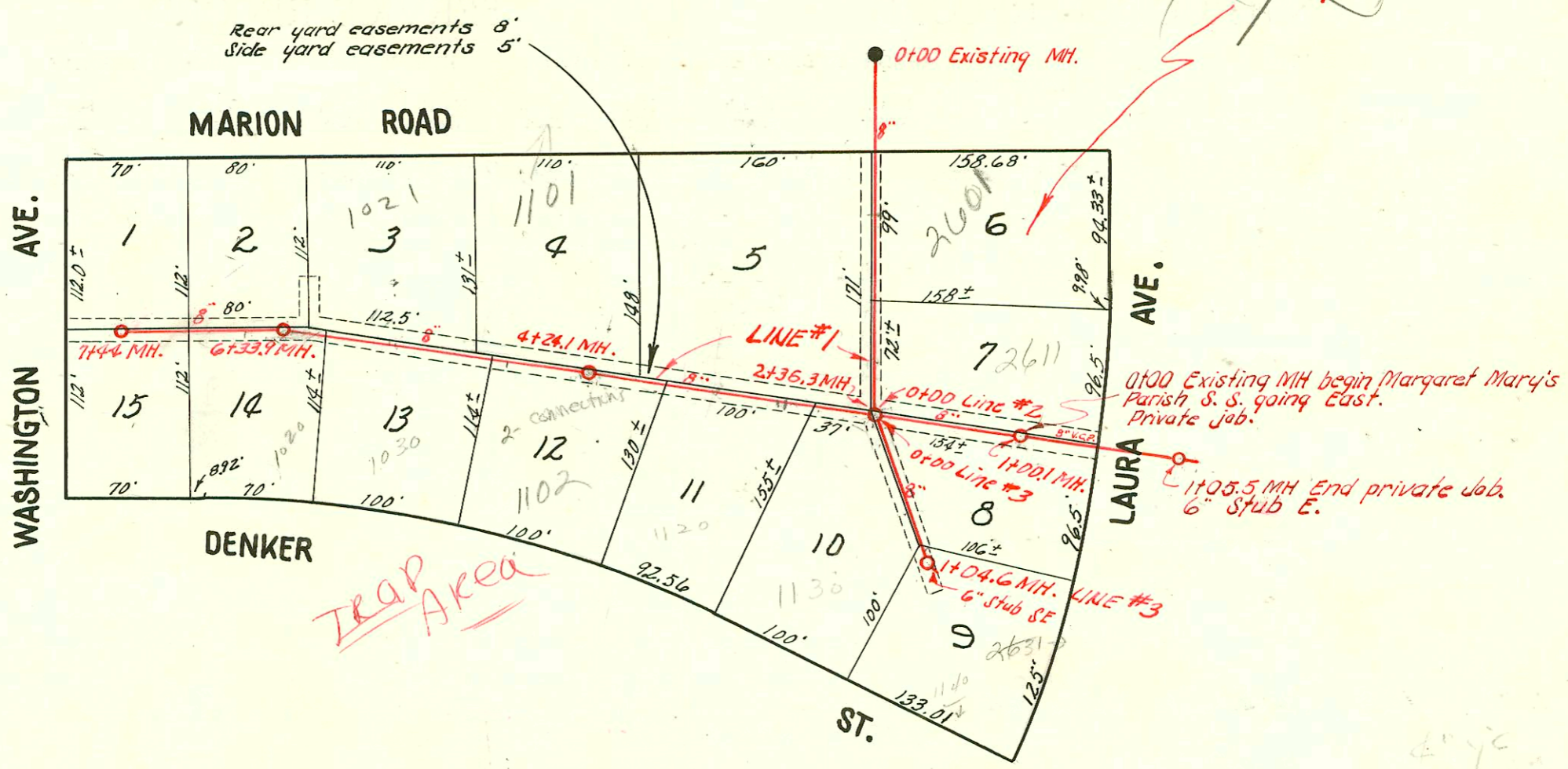
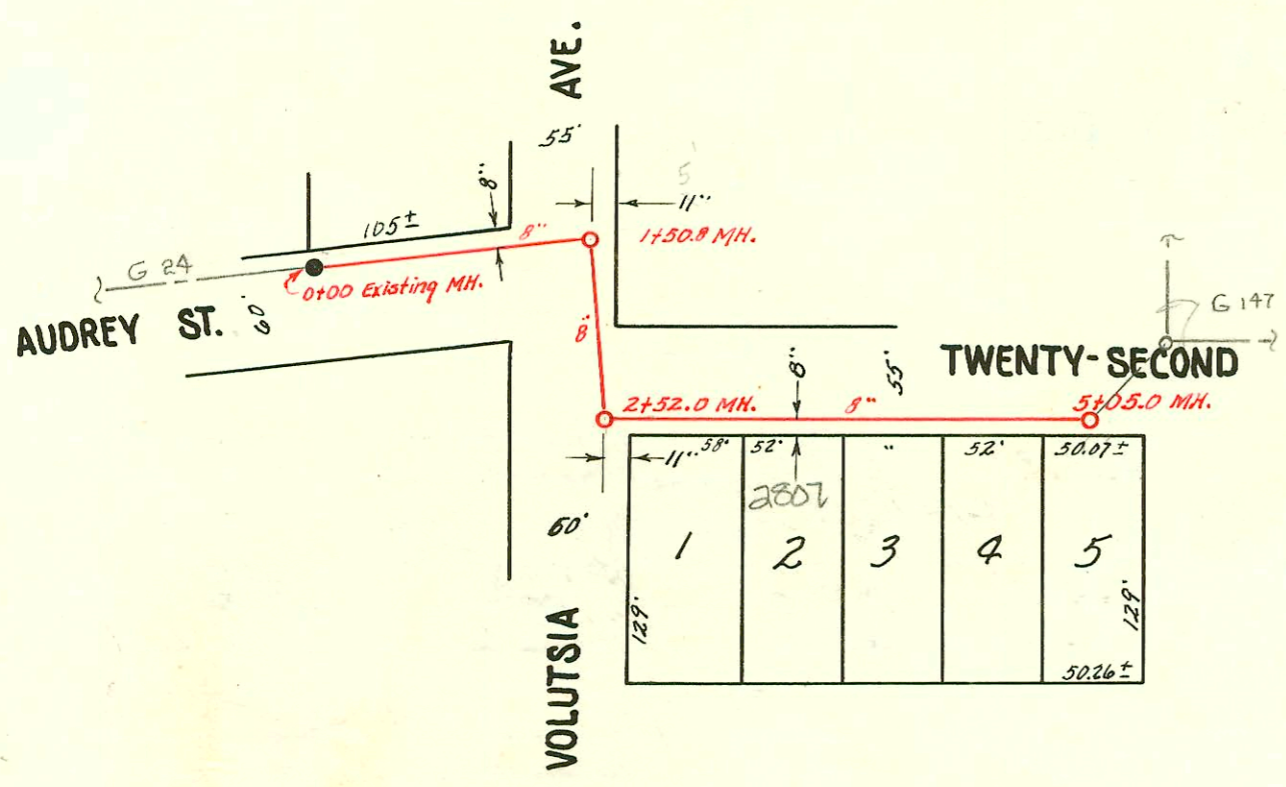


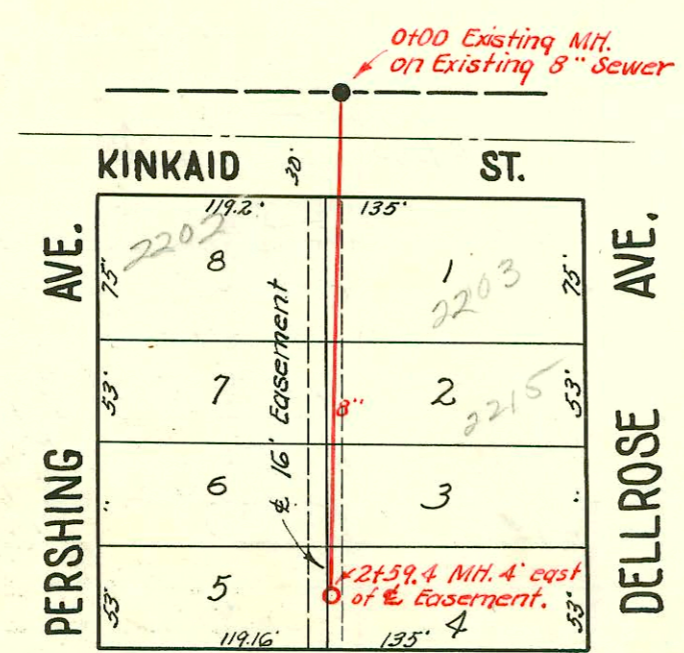
**NOTE:** 4" wycs must be trapped with 6" trap.



LAT. 18, DIST. A, S.S.# 20  
 W.B. CARTER, - APRIL, 1952  
 PROJ. NO. C22-6  
 BK. 63 JF



LAT. 2, DIST. 13, S.S.#12  
 W.B. CARTER - APRIL, 1952  
 PROJ. NO. C22-7  
 BK. JF 63



2004-0014 4564 1021 E Marion Rd- Roto Rooter  
 4" PE SDR17 Pipe burst replacement- City wye  
 repair 6" Predco 109' SE of MH 5544-146 - 4" PVC  
 ITWV CO, 3422, New house trap (6")

LAT. 62, D.C.S., S.S.#12  
 W.B. CARTER - MAY, 1952  
 PROJ. NO. C22-8  
 BK. JF 59

99-00 979 10-2-79 - 1120 E Denker McCullough - 110-4" SCH40 -  
 Repl upper 60' of sewer 60.5' wof MH 2+36.3 (2+96.8)

CONSTRUCTION RECORD

SERVICE RECORD

Line #1

STATION	ELEVATION		Depth	MANHOLE	4-INCH "Y" BRANCHES		No. of Permit		House Number		DATE OF PERMITS	
	Ground	Grade			North West	South East	North West	South East	North West	South East	North West	South East
0+00	95.3	89.33	6.0	0+00 Exist'g MH.								
1+00	95.9	89.43	6.5									
2+00	95.2	89.53	5.7									
2+36.3	95.3	89.66 out 89.66 in	5.7 5.6	2+36.3	Y North	Y South						
3+00	95.3	89.73	5.6									
4+00	95.1	89.83	5.3									
4+24.1	95.4	89.85	5.6	4+24.1								
5+00	95.2	89.93	5.3									
6+00	95.2	90.03	5.2									
6+33.9	95.2	90.06	5.1	6+33.9								
7+00	95.5	90.13	5.4									
7+44.0	95.1	90.17	4.9	7+44.0								
0+00	95.3	89.66	5.6	0+00 = 2+36.3 in Line #1								
1+00	95.1	89.76	5.3	1+00.1								
0+00	95.3	89.66	5.6	0+00 = 2+36.3 in Line #1								
1+00	95.2	89.76	5.4	1+04.6								
0+00	150.4	140.8	9.6	0+00 Exist'g MH.								
1+00	150.5	141.2	9.3									
1+50.8	152.6	141.40 out 141.62 in	11.2 11.0	1+50.8								
2+00	152.0	141.80	10.2									
2+52.0	152.7	142.03 out 145.53 in	10.0 7.2	2+52.0								
3+00	153.6	145.7	7.9									
4+00	156.3	146.10	10.2									
5+00	158.5	146.50	12.0									
5+05.0	158.5	146.52	12.0	5+05.0								
0+00	144.5	132.00	12.5	0+00 Exist'g MH.								
1+00	142.9	132.10	10.8									
2+00	140.9	132.20	8.7									
2+59.4	139.3	132.26	7.0	2+59.4								
0+0	95.7	90.00	5.7	0+00 Exist'g MH.								
1+0	95.6	90.10	5.5									
	95.3	90.11	5.2	1+05.5								

LAT. 2, DIST. 13, S.S. NO. 12

LAT. 62, D.C.S., S.S. NO. 12

MARGARET MARY'S PARISH PRIVATE S.S. BK. K-15 PEDDICORD CONST. CO. DEC. 7, 1954

2001-00874-4/12/01-2807 E 22nd - Padgett Ex - 4" SCH 40 CITY REPAIR - PREDCO - ITWIN CO, 2V22, 2V45

2000-01641 7/17/00 1102 E Denker - McCullough - Room Add'n - 4" SCH 40 (CITY TAP) 55' W of MH 4+24.1 (4+77.1) ITWIN CO, 1V45, 1H45

2000-01421-1102 E DENKER - MCCULLOUGH - 6/15/00 - FULL REPLACEMENT - 4" SCH 40 - 7'6" E of MH 4+24.1 - INST 2 ITWIN CO 4" WYE, 6" TRAP, 2V22, 4H20S 4H45 + 2 KICKOUTS

# 3165 Tap - 1115 Marion Road - 11-11-52 - Howard Cowan

SO C 42451 # 3075 - 1101 Marion Rd - 12-7-56 - Reynolds - 11-27-73 (4+76.7)

5931 6th St Wye 1130 Denker Denker 10-23-57

7619 6th St Wye 1102 Denker Denker 9-12-58 0175

2000-01421-1102 E DENKER - MCCULLOUGH - 6/15/00 - FULL REPLACEMENT - 4" SCH 40 - 7'6" E of MH 4+24.1 - INST 2 ITWIN CO 4" WYE, 6" TRAP, 2V22, 4H20S 4H45 + 2 KICKOUTS

12718 Tap 2000 1. Teaching Denker 4-29-60 (2+26.4)

16404 - Seal off - 2601 Laura - Roadpath Pkg 11-26-62

921 16467-7 1120 E Denker 7-29-92 (4" PVC 40 Rep all but knee W of line) - sealed off 88' W of EPL and 12' S of MPL