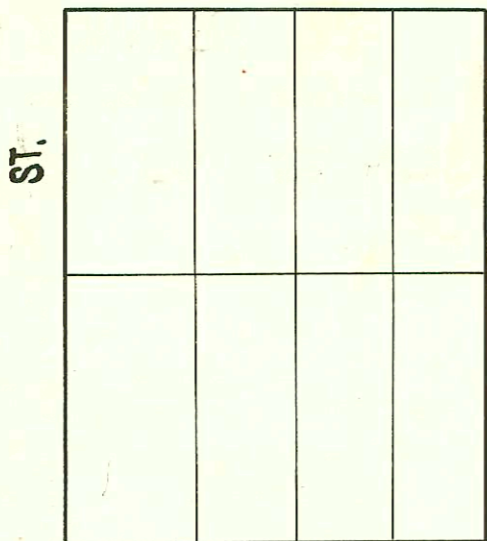
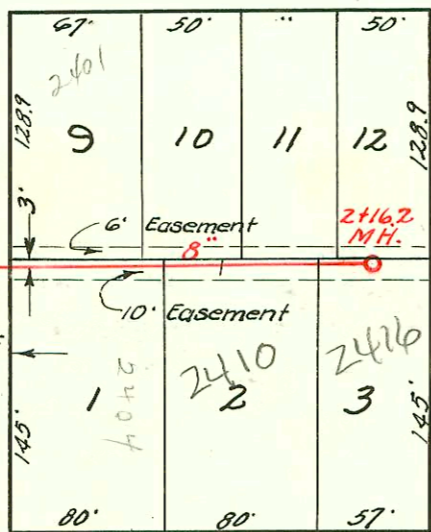


FUNSTON ST.



REVA ST.



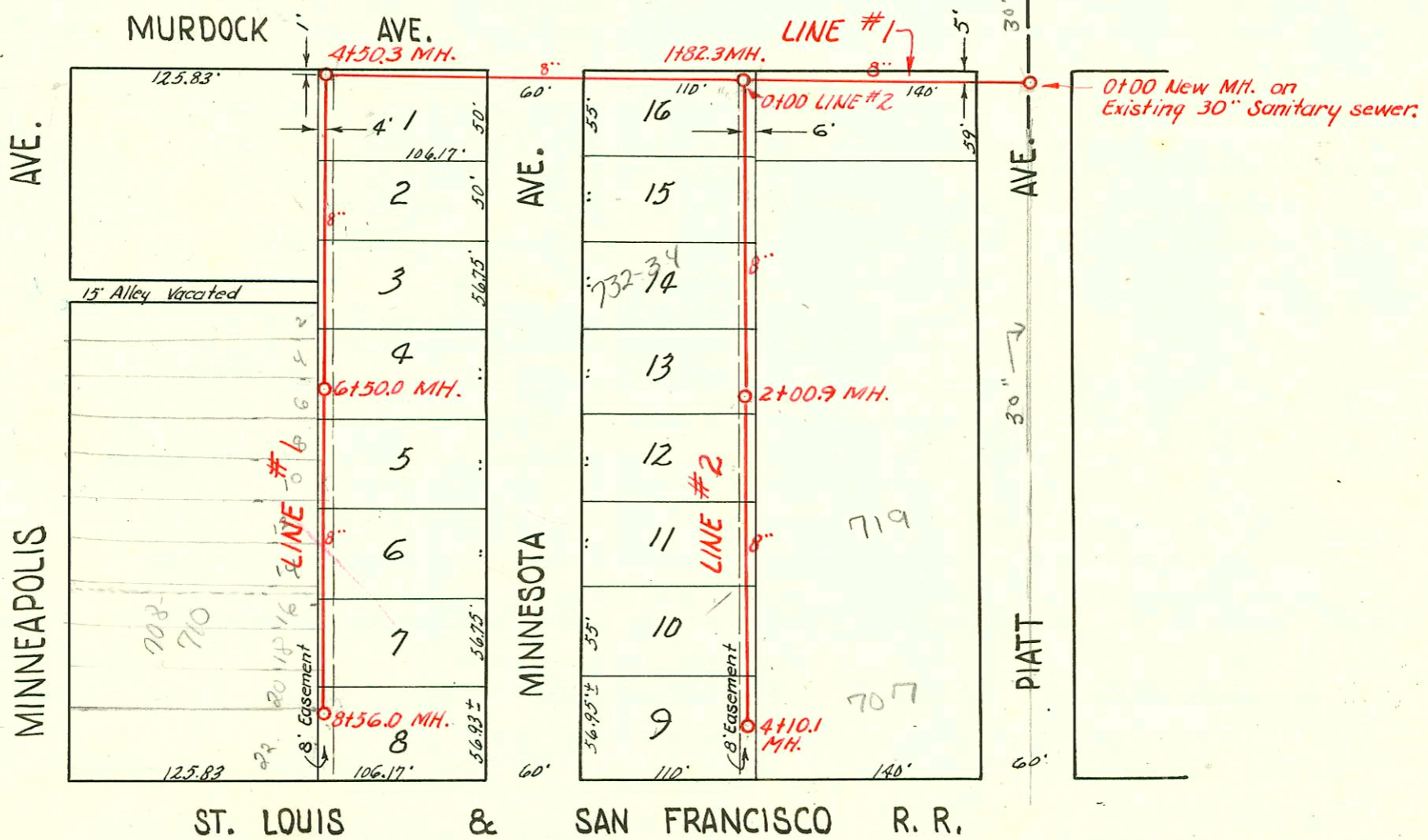
SKINNER ST.

0100 New MH. on Existing 4.2" Sewer

GROVE

LAT. 6, SUB. Z, S. S. NO. 12
 W. B. CARTER-MAY, 1952
 PROJ. NO. C 22-9
 BK. J. 61

SCALE 1"=100'



0100 New MH. on Existing 30" Sanitary sewer.

LAT. 2, DIST. V, S.S. # 12
 W. B. CARTER - MAY, 1952
 PROJ. NO. C22-3
 BK. NO. J. 62

CONSTRUCTION RECORD

SERVICE RECORD

STATION	ELEVATION		Depth	MANHOLE	4-INCH "Y" BRANCHES		No. of Permit		House Number		DATE OF PERMITS	
	Ground	Grade			North	South	North West	South East	North West	South East	North West	South East
2001-02111-8122101-2410E Skinner-Wichita Exc 4" SCH40 Donut (MSMT good) 2V22, 2KICKOUTS, 1V45, 2TWINCO 2 Fernco, 1W4E, 4" SCH40 Predco												
LAT. 6, SUB. Z, S.S. NO. 12	0+00	98.8	92.50	6.3	0+00 New MH.	0+78.7		#01506	2401 REON		10-14-80	
	1+00	97.9	92.60	5.3		0+39.7 1+07.7	0+42.7	#01505 #2147	#1451	2410 R	10-14-80 8-13-52	5-29-52
	2+00	97.9	92.70	5.2		1+57.1	2+00.2	#2677	2001-02111 #45567 1449	2410 R # see above	9-25-52	6-16-53 5-29-52
	2+16.2	97.9	92.72	5.2	2+16.2	2+07.3		#1191	2413 Rera		5-12-52	
								#1440	2419 Rera		5-29-52	
LAT. 2, DIST. V, S.S. NO. 12	0+00	111.1	106.90	4.2	0+00 New MH.		Y West Y East					
Line #1	1+00	111.8	107.00	4.8								
	1+82.3	112.4	107.08	5.3	1+82.3							
	2+00	112.2	107.10	5.1								
	3+00	112.7	107.20	5.5								
	4+00	112.0	107.30	4.7								
	4+50.3	111.5	107.33 out 107.43 in	4.1	4+50.3							
						4+57.3		#3977 #1363	743-45 5/0 # Minnesota		8-24-81	5-22-52
	5+00	111.2	107.50	3.7		4+88.4 5+20.5		#1351 #1362 #1353	1907-09 # Minnesota 1907-07-50 # Minnesota		5-22-52 2-5-80 5-22-52	
						5+26.2		#76415 #1361	731-3971.50 # Minnesota 731-3371 # Minnesota		2-5-80 5-22-52	3-4-74 5-22-52
						5+81.0						
						5+95.3					5-19-52	
	6+00	110.4	107.60	2.8		6+37.0		#1292	732-3471 # Minnesota		3-4-74	5-22-52
	6+50	110.3	107.65	2.7	6+50	6+61.0		#1293	726-2871 # Minnesota		12-10-04	3-4-74 5-22-52
						6+89.2		#1353	720-2371 # Minnesota		4-12-84	5-22-52
	7+00	110.2	107.70	2.5		7+50.0		#1354	713-1571 # Minnesota		5-22-52	3-5-74 5-22-52
						7+58.3		#1354	714-2771 # Minnesota		5-22-52	
						7+80.0		#1355	707-9771 # Minnesota		3-4-74	5-22-52
	8+00	109.8	107.80	2.0		7+88.8		#1355	708-0715 # Minnesota		3-2-94	5-22-52
						8+49.5		#1294	702-4771 # Minnesota		12-7-73	2-7-73
	8+56.0	109.6	107.86	1.7	8+56.0	8+52.5		#1356	701-3771 # Minnesota		5-19-52	5-22-52
Line #2	0+00	112.4	107.18	5.2	0+00=1+82.3 in Line #1	0+11.9		#1284	744-4671 # Minnesota		5-19-52	
						0+36.0		#1295	747-4971 # Oratt			5-19-52
	1+00	111.9	107.28	4.6		0+87.1		#1285	738-4071 # Minnesota		5-19-52	
						1+20.5		#1286	732-3471 # Minnesota		3-15-89	5-19-52
						+95.1		#1287	726-2871 # Minnesota		5-19-52	
	2+00	110.4	107.38	3.0		2+28.5		#56088	720-2271 # Minnesota		6-23-76	5-19-52
	2+00.9	110.4	107.38	3.0	2+00.9	3+07.0		#1288	714-1671 # Minnesota		8-29-76	5-19-52
	3+00	109.9	107.48	2.4		+37.0		#1289	708-1071 # Minnesota		5-19-52	2-18-83
	4+00	109.6	107.58	2.0		4+06.2		#1290	702-4771 # Minnesota		3-19-52	
	4+10.1	109.5	107.59	1.9	4+10.1			#1291				

Seal off
 C36429
 #7030 Top Trailer 723 Piatt, Ill. Francis 12/21/72
 C72387-2404 E. Skinner R 6-18-79 (0+51.0)
 All Permits 5-26-58