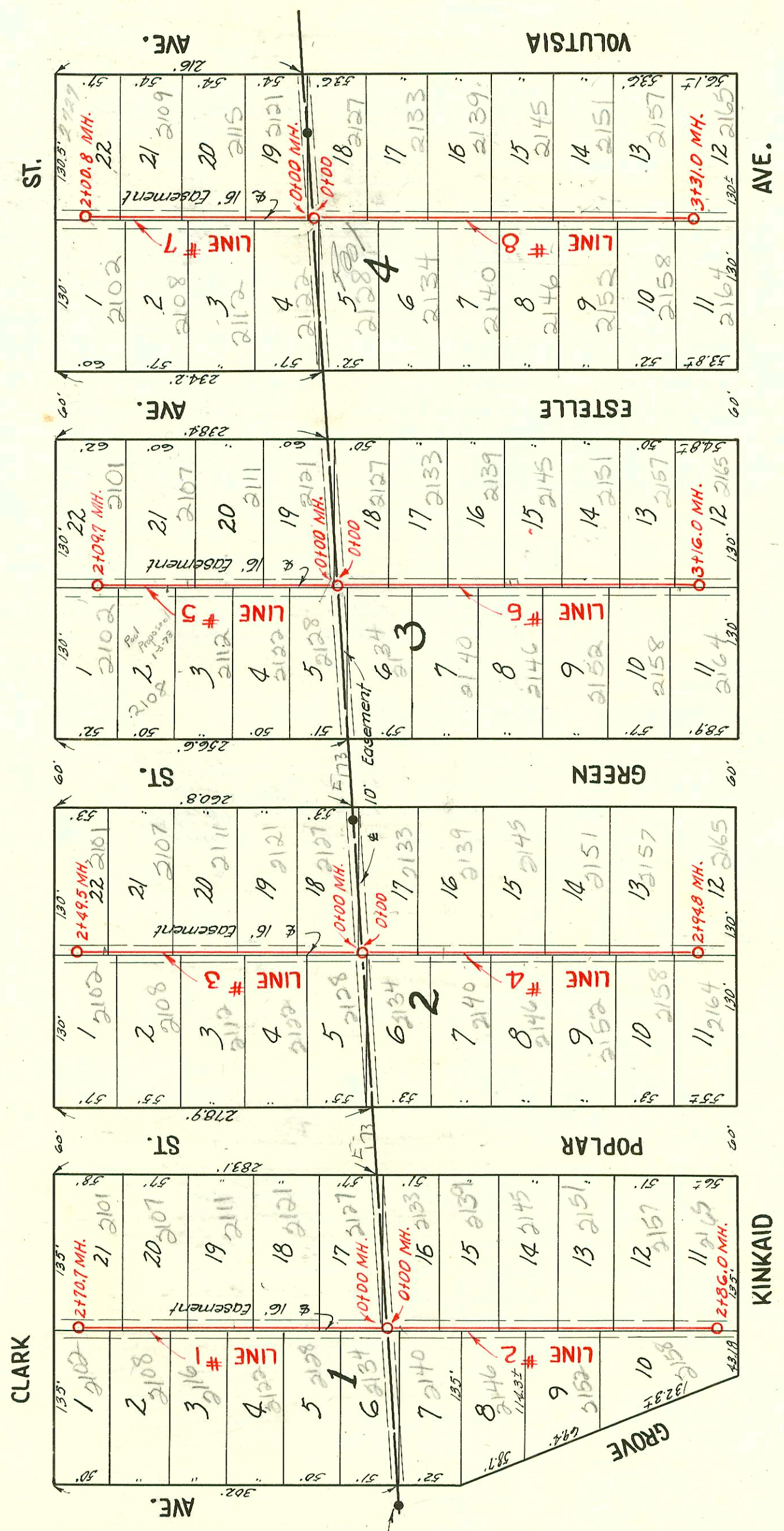




Scale 1"=100'



NOTE: Sewer runs 3' East of back lot lines.

#3336 2102 S. Estelle - High River Pkg. - 2-15-52  
 #482 - Sep - 2121 S. Estelle - Building Pkg. - 1-10-56

2001-0173-711201-2121 S Poplar-4"sch 40 City Repair 4"Predco-71.2' N of MH (on mgmt)  
 (Fernco to CI @ house - ITWIN CO, 1H45  
 2003-00177-112103-2133 Poplar- Roto- Pipe burst replacement 4"PE SDR17- city wye  
 repair 4"Predco 10.8' S of MH 5045- 301, ITWIN CO, 1V22, 1V45, 1H45  
 2002-00922-41202-2128 Poplar- Wichita Plbg- ITWIN CO, 4H22, 1H45, 1Fernco @ property  
 Line, Fernco @ house, shallow, 4"40 PVC  
 2003-00293-21403-2145 Poplar- Roto- Pipeburst replacement 4"PE SDR17, ITWIN CO,  
 2V45, City wye repair 104' S of MH 0700(1H04) 4"Predco, shallow

**LAT. 3, S. S. NO. 12**  
 HENSLEY CONST. CO. - MAY, 1952  
 PRIVATE JOB  
 BK. JF59

CONSTRUCTION RECORD

SERVICE RECORD

Line #1

Line #2

Line #3

Line #4

Line #5

Line #6

Line #7

Line #8

STATION	ELEVATION		Depth	MANHOLE	4-INCH "Y" BRANCHES		No. of Permit		House Number		DATE OF PERMITS	
	Ground	Grade			West	East	North West	South East	North West	South East	North West	South East
0+0	96.5	91.42	5.1	0+00	0+09.3 +52.8	0+12.3 0+71.2	#2514 #2515	#2526 2001-01713 #2527	2134 R None 2128 R None 2122 R None	2127 R Poplar None 2121 R Poplar None 2111 R Poplar	9-15-52	9-15-52 7-12-01 9-15-52
1+0	96.6	91.52	5.1		1+02.3 1+53.2	1+35.8	#2516 #2517	#2528 #2529	2122 R None 2116 R None	2111 R Poplar None	9-15-52	9-25-51 9-15-52
2+0	96.8	91.62	5.2		2+04.7 +56.7	2+53.7	#2518 #2519	9419817 #2529 #2530	2108 R None 2102 R None	2107 R Poplar None	9-15-52	12-9-54 9-15-52
2+70.7	97.3	91.69	5.6	2+70.7								
0+0	96.5	91.42	5.1	0+00	0+13.0 +53.4	0+10.0	#2513	2003-00117 #2525 #2524	2140 R None 2146 R None	2133 R Poplar None 2137 R Poplar	9-15-52	see next pg 9-15-52 9-15-52
1+0	96.4	91.52	5.9		0+62.2 1+04.5	1+20.9	#2512 #2511	2003-00293 #2523	2146 R None 2152 R None	2145 R Poplar None 2151 R Poplar	9-15-52	2-4-03 9-15-52
2+0	96.5	91.62	4.9		2+06.4 +57.7	2+06.4	#2521 #2520		2157 R Poplar 2163 R Poplar	2157 R Poplar 2163 R Poplar	9-15-52	9-15-52
2+86.0	96.4	91.71	4.7	2+86.0								
0+0	96.4	92.41	4.0	0+00	0+06.2 +56.9	0+15.0	#1421 #1420	2002-00722 #1421 #1420	2126 R Poplar 2127 R None	2127 R Poplar 2121 R None	4-2-02 5-28-52	5-28-52
1+0	96.6	92.51	4.1		1+12.3 +67.2	1+15.3	#1419 #1418	#1432 #1431	2112 R None 2108 R Poplar	2111 R None 2107 R None	5-28-52	5-28-52
2+0	96.4	92.61	3.8		2+21.0	2+24.0	#1417	#1429 #1428	2102 R Poplar	2101 R None	5-28-52	4-27-51 5-28-52
2+49.5	97.1	92.66	4.4	2+49.5								
0+0	96.4	92.41	4.0	0+00	0+26.5 +72.9	0+23.5 +69.9	#1433 #1434	91-340467 #1433 #1434	2134 R Poplar 2140 R Poplar	2133 R None 2139 R None	10-1-91 5-28-52	8-14-82 5-28-52
1+00	96.1	92.51	3.6		1+26.1 +83.8	1+23.1 +80.8	#1435 #1436	26058 #1434 #1435	2146 R Poplar 2152 R Poplar	2145 R None 2151 R None	5-28-52	5-28-52
2+00	96.1	92.61	3.5		2+38.2 +86.8	2+35.2 +83.8	#1437 #1438	#1437 #1438	2157 R Poplar 2163 R Poplar	2157 R Poplar 2163 R Poplar	5-28-52	5-28-52
2+94.8	96.0	92.71	3.3	2+94.8								
0+00	96.7	93.30	3.4	0+00	0+14.6 +53.9	0+11.6	#1954 #1953	#1954 #1953	2128 R Poplar 2122 R None	2118 R Poplar 2107 R None	7-22-52	7-22-52
1+00	97.1	93.40	3.7		0+69.1 +53.9	0+69.1	#1952 #1951	#6344 #7183	2118 R Poplar 2107 R None	2118 R Poplar 2107 R None	9-14-53	12-9-53
2+00	97.4	93.50	3.9		2+03.4	2+00.4	#1950	#5707	2102 R Poplar	2101 R None	7-22-52	6-6-55
2+09.7	97.4	93.51	3.9	2+09.7								
0+00	96.7	93.30	3.4	0+00	0+12.2 +51.4	0+09.2	#1955 #1962	91-331937 #1955 #1962	2134 R Poplar 2140 R Poplar	2127 R Poplar 2133 R None	7-22-52	7-22-52
1+00	96.9	93.40	3.5		0+65.8 +51.4	1+00	#1956 #1963	#1956 #1963	2140 R Poplar 2146 R Poplar	2137 R Poplar 2145 R Poplar	7-22-52	7-22-52
2+00	96.9	93.50	3.4		1+23.4 +51.4	1+23.4	#1957 #1964	#1957 #1964	2152 R Poplar	2151 R Poplar	7-22-52	3-31-51 7-22-52
3+00	97.1	93.60	3.5		2+37.8 +51.4	2+01.8	#1959 #1966	#1959 #1966	2153 R Poplar 2159 R Poplar	2151 R Poplar 2159 R Poplar	7-22-52	7-22-52
3+16.0	97.2	93.62	3.6	3+16.0	2+50.6 2+97.4	3+00.4	#1969	#1969	2164 R Poplar	2163 R Poplar	7-22-52	7-22-52
0+00	97.5	94.14	3.4	0+00	0+10.0 +64.4	0+13.0	#3337 #3338	91-01153 #3337 #3338	2122 R Poplar 2112 R Poplar	2115 R Poplar 2108 R Poplar	9-7-55	6-10-57
1+00	97.9	94.24	3.7		1+18.6 +78.7	1+21.6	#3337 #3337	4716 4715	2108 R Poplar 2102 R Poplar	2109 R Poplar 2102 R Poplar	9-7-55	6-10-57
2+00	97.8	94.34	3.5	2+00.8								
0+00	97.5	94.14	3.4	0+00	0+13.7 +64.6	0+10.7	#2336 #2337	91-01153 #2336 #2337	2128 R Poplar 2134 R Poplar	2125 R Poplar 2133 R None	8-27-52	11-9-99 1-30-56
1+00	97.2	94.24	3.0		1+16.0 +70.5	1+13.0	#2338 #2339	#1161 #433	2140 R Poplar 2146 R Poplar	2133 R None 2139 R None	8-27-52	6-19-56
2+00	97.1	94.34	2.8		2+21.7 +72.8	2+18.7	#2340 #2341	#6175 #433	2152 R Poplar 2158 R Poplar	2151 R Poplar 2159 R Poplar	8-27-52	8-27-52
3+00	97.3	94.44	2.9		3+23.5	3+20.5	#2342	#4433	2164 R Poplar	2163 R Poplar	8-27-52	5-25-55
3+31.0	97.6	94.47	3.1	3+31.0								

tap # 109-2121 S. Volusia - 5/7/06 - Reynolds Elby Co - tap 93-1902-7 - 2152 S. Green - 4" PVC 40 - 4" Wye required - 182 north - 1/4" p.f. shallow - replace entire line