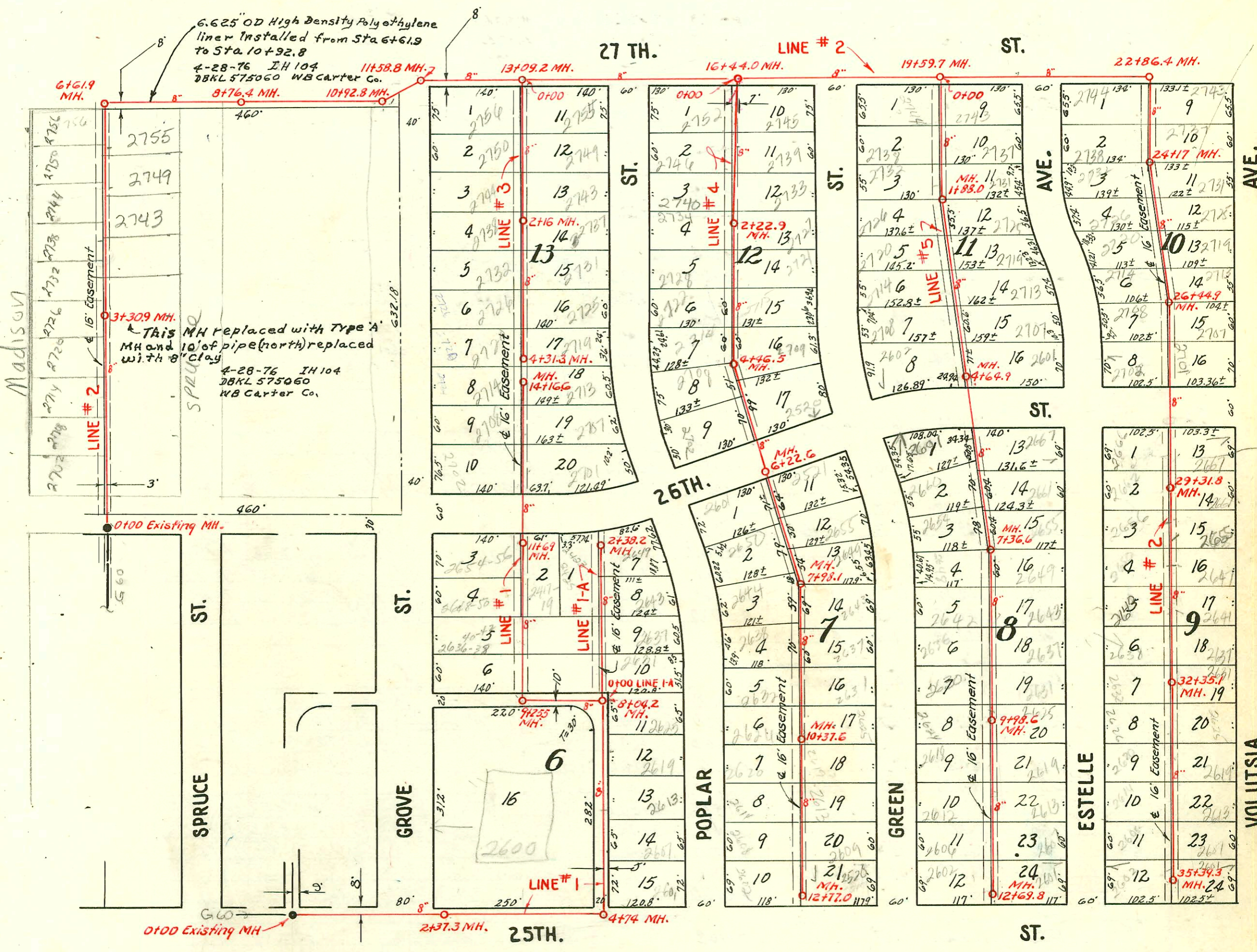


Scale 1"=150'



NOTE: The construction record for the above lateral is shown on pages 69 to 71 inclusive.

98 12606 7 713-48 2738 N. Madison - Bldg Add
 #6141 - Int - 2417-19 E. 26th - 8-12-53 - Roy Bryant
 #4573 - Int - 2714 N. Grove - 3-23-53 - Eugene Reynolds - Reddi Root R:
 4" PVC, ITWIN CO, 1045, City main repair (Broke other swr behind house) city tap 19.7'
 Sof DEMH 14+16.6 (13+96.9)

LAT. 31, DIST. T., S.S. #12
 W. B. CARTER - JUNE, 1952
 PROJ. NO. C22-5, BK. J. 66

CONSTRUCTION RECORD

SERVICE RECORD

LINE NO. #2 Continued from page 69

LINE NO.	STATION	ELEVATION		Depth	MANHOLE	4-INCH "Y" BRANCHES		No. of Permit		House Number		DATE OF PERMITS			
		Ground	Grade			North West	South East	North West	South East	North West	South East	North West	South East	North West	South East
	23	148.9	141.04	7.9		23+15.0	23+12.0	#2630	#4290	2744 N. Estelle	2743 N. Volusia	9-23-52	2-28-53		
						+78.6	+75.6	#2631	#4289	2738 N. Estelle	2737 N. Volusia	9-23-52	2-28-53		
	24	158.7	141.44	17.3											
		158.8	141.51	17.3	24+17.0										
						24+39.0	24+36.0	#2632	#4288	2732 N. Estelle	2731 N. Volusia	9-23-52	6-10-53		
						24+95.9	24+92.9	#2633	#4287	2726 N. Estelle	2725 N. Volusia	9-23-52	2-28-53		
	25	159.7	141.84	17.9		25+50.2	25+47.2	#2545		2720 N. Estelle	2719 N. Volusia	9-16-52			
	26	151.8	142.24	9.6		26+07.5	26+04.5	#2544	#4285	2714 N. Estelle	2713 N. Volusia	9-16-52	2-28-53		
		152.4	142.40	10.0	26+44.9										
						26+60.8	26+57.8	#2543	#4284	2708 N. Estelle	2707 N. Volusia	7-23-52	1-4-53		
	27	153.8	142.64	11.2	per cut Maint	27+20.3	27+17.3	#2542	#4283	2702 N. Estelle	2701 N. Volusia	9-16-52	2-28-53		
	28	155.0	143.04	12.0		28+53.3	28+50.3	#2173	#3986	2696 N. Estelle	2695 N. Volusia	8-14-52	2-2-53		
	29	155.3	143.44	11.9		29+23.2	29+20.2	#2172	#3985	2690 N. Estelle	2689 N. Volusia	8-4-52	2-2-53		
		155.9	143.58 out 147.58 in	12.3 8.3	29+31.8										
						29+82.4	29+79.4	#2171	#3984	2684 N. Estelle	2683 N. Volusia	8-20-52	1-28-53		
	30	155.9	147.84	8.1		30+52.8	30+49.8	#2170	#3983	2678 N. Estelle	2677 N. Volusia	8-14-52	1-17-53		
	31	156.5	148.24	8.3		31+03.3	31+00.3	#2169	#3982	2672 N. Estelle	2671 N. Volusia	8-14-52	9-9-53		
						31+63.4	160.4	#2168	#3981	2666 N. Estelle	2665 N. Volusia	10-2-52	1-18-53		
	32	158.1	148.64	9.5		32+20.5	32+17.5	#1542	#3724	2660 N. Estelle	2659 N. Volusia	6-7-52	1-2-53		
		158.7	148.79 out 150.79 in	9.9 7.9	32+35.1										
						32+80.6	32+77.6	#1541	#3723	2654 N. Estelle	2653 N. Volusia	6-7-52	1-17-53		
	33	159.6	151.04	8.6		33+40.5	33+37.5	#1540	#3722	2648 N. Estelle	2647 N. Volusia	6-7-52	11-17-52		
							198.0	#1539	#3721	2642 N. Estelle	2641 N. Volusia	6-7-52	11-17-52		
	34	161.7	151.44	10.3		34+01.0	34+57.2	#1538	#3720	2636 N. Estelle	2635 N. Volusia	6-7-52	11-17-52		
						+60.2		#1537	#3719	2630 N. Estelle	2629 N. Volusia	6-7-52	10-27-52		
	35	163.5	151.84	11.7		35+26.3	35+23.3	#1536	#3718	2624 N. Estelle	2623 N. Volusia	6-7-52	10-27-52		
		164.2	152.00	12.2	35+39.3										
#3	0	154.8	148.24	6.6	0+00=13+09.2 in Line #2	0+33.8	0+30.8	#4729	#3824	2750 N. Volusia	2749 N. Volusia	6-4-53	1-19-53		
	1	156.3	148.67	7.6		1+05.6	1+02.6	#4730	#3823	2744 N. Volusia	2743 N. Volusia	4-7-53	1-19-53		
						+65.6	+62.6	#4731	#3822	2738 N. Volusia	2737 N. Volusia	4-7-53	1-19-53		
	2	158.3	149.07	9.2											
		158.4	149.13	9.3	2+16										
						2+26.3	2+23.3	#4732	#3821	2732 N. Volusia	2731 N. Volusia	4-7-53	1-19-53		
						+73.9	+70.9	#4733	#3820	2726 N. Volusia	2725 N. Volusia	4-7-53	1-19-53		
	3	159.7	149.47	10.2		3+46.1	3+43.1	#4734	#3819	2720 N. Volusia	2719 N. Volusia	3-23-53	1-19-53		
	4	160.8	149.87	10.9		4+05.5	4+02.5	#4735	#3818	2714 N. Volusia	2713 N. Volusia	3-23-53	1-19-53		
		161.0	150.00	11.0	4+31.3										
#4	0	154.5	144.01	10.5	0+00=16+44.0 in Line #2	0+31.2	0+28.2	#3625	#3628	2752 N. Volusia	2751 N. Volusia	12-29-52	12-29-52		
	1	155.2	144.40	10.8		1+07.0	1+04.0	#3626	#3627	2746 N. Volusia	2745 N. Volusia	12-29-52	12-29-52		
						+66.5	+63.5	#3627	#3626	2740 N. Volusia	2739 N. Volusia	12-29-52	12-29-52		
	2	157.1	144.80	12.3		2+17.6	2+14.6	#3628	#3625	2734 N. Volusia	2733 N. Volusia	12-23-52	11-10-52		
		157.7	144.89	12.8	2+22.9										
						2+87.4	2+84.4	#3606	#3609	2728 N. Volusia	2727 N. Volusia	4-4-53	7-27-52		
	3	158.9	145.20	13.7		3+47.6	3+44.6	#3607	#3608	2722 N. Volusia	2721 N. Volusia	12-23-52	11-10-52		
	4	159.5	145.60	13.9		4+07.8	4+04.8	#3608	#3607	2716 N. Volusia	2715 N. Volusia	12-23-52	11-10-52		
		159.7	145.78	13.9	4+46.5										
						4+66.5									
	5	159.0	146.00	13.0		5+14.9									
	6	159.2	146.40	12.8											
		159.3	146.49	12.8	6+22.6										
						6+75.7									
						6+50.1	6+47.1	#4105	#1825	2656 N. Volusia	2655 N. Volusia	8-26-51	7-9-52		
	7	159.9	146.80	13.1		7+18.0		#2105	#1824	2650 N. Volusia	2649 N. Volusia	8-8-52			
						7+37.1	7+34.1	#2104	#1823	2644 N. Volusia	2643 N. Volusia	8-8-52	7-9-52		
						7+90.8									
	8	160.4	147.20	13.2	7+98.1										
						8+50.0		#2103	#1822	2638 N. Volusia	2637 N. Volusia	8-8-52	7-9-52		
						8+74.0									
						8+83.5		#2102	#1821	2632 N. Volusia	2631 N. Volusia	8-8-52	7-9-52		
	9	160.5	147.60	12.9		9+43.8									
						9+77.1		#1820	#1820	2626 N. Volusia	2625 N. Volusia		7-9-52		
	10	159.8	148.00	11.8											

NOTE: This project continues on page 71

#4286-24 at 25+67.2 - 2719 N. Volusia - 2-28-53 - Eugene Reynolds

#91-34607-7 10/8/91 2701 N. Volusia - Henning (4" PVC 40 27+16.9)

#91-019796-0701 4-5-91 2612 N. Volusia (4" SDR 35 Wye, was 154N)
#2000-00996-2650 ESTELLE - Tied Back to EX CLAY LINE - REP 40' HIGH END

2001-00841-411061- 2702 N Estelle- Reddi - 4" SCH40 - City Wye Repair - Predco 99.2' N of MH 297 31.8 (28+32.6)
(12' Depth per City Crew) 1V22, 2H22, 2V45, 2H45
2002-01207-4125102- 2725 N Volusia- Wichita Plog - Wye 76' S of MH 24+17 (24+93) 4" PVC, 1.6" TWINCO, 2V22
Shallow

2002-03437- 12/18/02- 2649 Green- Reddi - 4" PVC, 1 TWIN CO, 1V45, 1H22, 1V22, Shallow,
City repair 43.4' NW of MH 5650-146 4" Predco

SO-R 2004-00267 7-2-04 2620 N ^{West} Estelle - Wichita FXC: