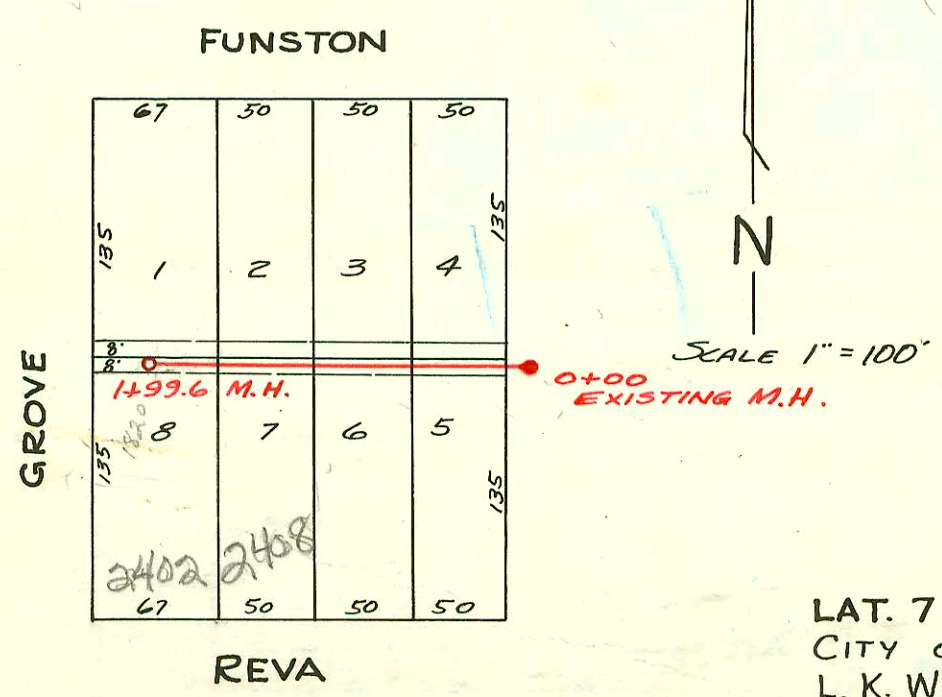


LAT. X, DIST. E, S.S. #21
 CITY OF WICHITA, KANSAS
 L.K. WHITE CITY ENGINEER
 W.B. CARTER - CONTRACTOR
 BOOKED JUNE 30, 1952
 BK. J.H.T. 65 C22-25



LAT. 7, SUB. Z, S.S. #12
 CITY OF WICHITA, KANS.
 L.K. WHITE - CITY ENGINEER
 W.B. CARTER - CONTRACTOR
 BOOKED JUNE 30, 1952
 BK. J.H.T. 65 C22-30

CONSTRUCTION RECORD

SERVICE RECORD

STATION	ELEVATION		Depth	MANHOLE	4-INCH "Y" BRANCHES		No. of Permit		House Number		DATE OF PERMITS			
	Ground	Grade			North West	South East	North West	South East	North West	South East	North West	South East	North West	South East
0+00		99.75	4.15	0+00 EXISTING M.H.										
+79.5	103.5	99.84	3.73	+79.5					2001 VINE			10-4-89		
1+00	103.4	99.85	3.58									9-23-52		
2+00	103.6	99.95	3.72									10-9-74		
3+00	103.4	100.05	3.31									9-23-52		
3+08.3	103.5	100.07	3.40	3+08.3								9-23-52		
4+00	103.6	100.15	3.35									9-23-52		
5+00	103.6	100.25	3.24									9-23-52		
5+59.2	103.3	100.31	3.02	5+59.2								9-23-52		
6+00	103.4	100.35	2.88									9-23-52		
7+00	103.3	100.45	2.77									9-23-52		
8+00												9-23-52		
+01.4	103.3	100.55	2.62	8+01.4								9-23-52		

				M.H.	'Y' NORTH	'Y' SOUTH						
0+00	99.5	95.78	3.62	0+00 EXISTING M.H.								
1+00	99.3	95.88	3.37									
1+99.6	100.4	95.98	4.58	1+99.6								

2002-00557-2-28-02-2025 S Vine - Padgett Exc - 4" PVC, TWIN CO, 2V22, 2H22, donut (msmt good) shallow

2002-00870-3/27/02-2408 Reva - A Good Pibr - Predco Saddle 47' E of 1179 K 1+52.6 TWIN CO, 2H45, 1V45, 14" fall, 4" SCH 40

2000-02564-2016 S Glenn - Wainoo - Mies Const - 4" SCH 40 - EXISTING TAP - REPLACED ENTIRE LINE - NO ALLEY

#C67150 - 2055 S. Vine 6-29-78 Savers (6+45.9)

S.O. #C67149 - 2055 S. Vine 6-29-78 - Savers (Re Routed line in yard and re connect same way - see #C67150)

Tap # 2072 - 2108 S. Glenn - Horn Pllg Co - 9-21-54 - (\$40.00 special fee paid 9-21-54)

1379 - Tap - 2004 S. Glenn - Shipp Pllg Co - 7-1-54 (Special fee \$40.00 paid 7-1-54)

1233 - 2016 Glenn - G.A. Smith - 6-21-54 (Special fee \$40.00 paid 5-24-54)

910 - Tap - 2005 S. Glenn - Brodie Pllg Co - 5-12-54 (Special fee \$40.00 paid 2-8-54)

908 - Tap - 2042 Glenn - Brodie Pllg Co - 5-12-54 - Brodie Pllg Co (Special fee \$40.00 paid 2-8-54)

837 - Tap - 2102 S. Glenn - H. Hatten Pllg Co - 5-5-54 - H. Hatten Pllg Co. (\$40.00 special fee paid 5-5-54)

2636 - 2001 - Carl Vaughn - Tap - 9-23-52

3925 - Tap - 1822 S. Grove - 1-29-53 - Eugene Reynolds (1+93.6)

6651 - Tap - 2030 S. Glenn - 10-7-53 - J. McDonald (\$40.00 special fee paid 10-7-53)

7316 - Tap - 2032 S. Glenn - 1-5-54 - Brodie Plumbing Co. - (\$40.00 special fee paid 1-5-54)

7317 - Tap - 2038 S. Glenn - 1-5-54 - Brodie Plumbing Co. - (\$40.00 special fee paid 1-5-54)

352 - Tap - 2010 S. Glenn - 3-15-54 H.A. Smith } \$40.00 special fee paid

353 - Tap - 2022 S. Glenn - 3-15-54 H.A. Smith } on each house - 3-15-54.

610 - Tap - 2058 S. Glenn - 4-12-54 - Roy Mc Coy - \$40.00 special fee paid 4-12-54