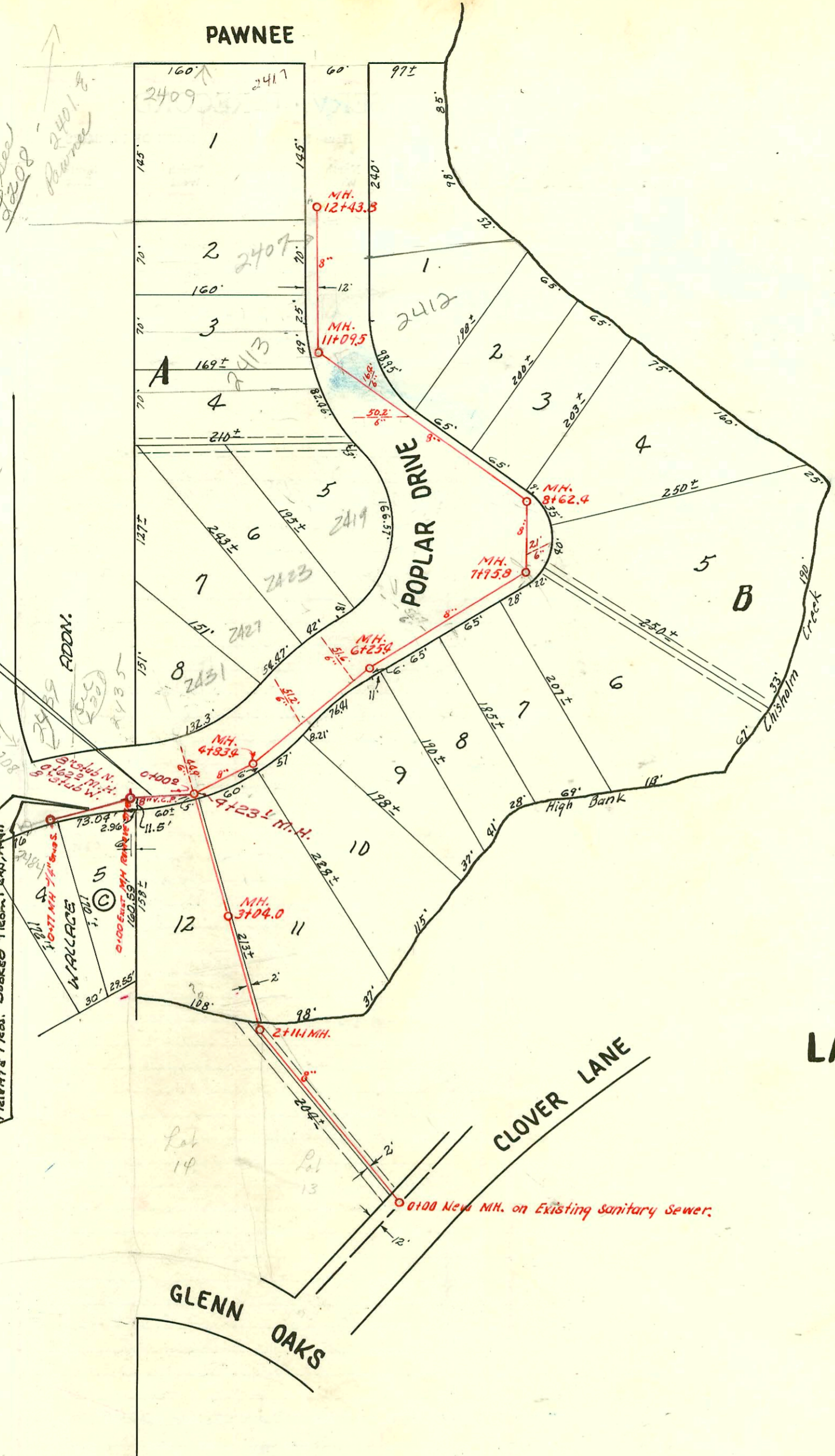
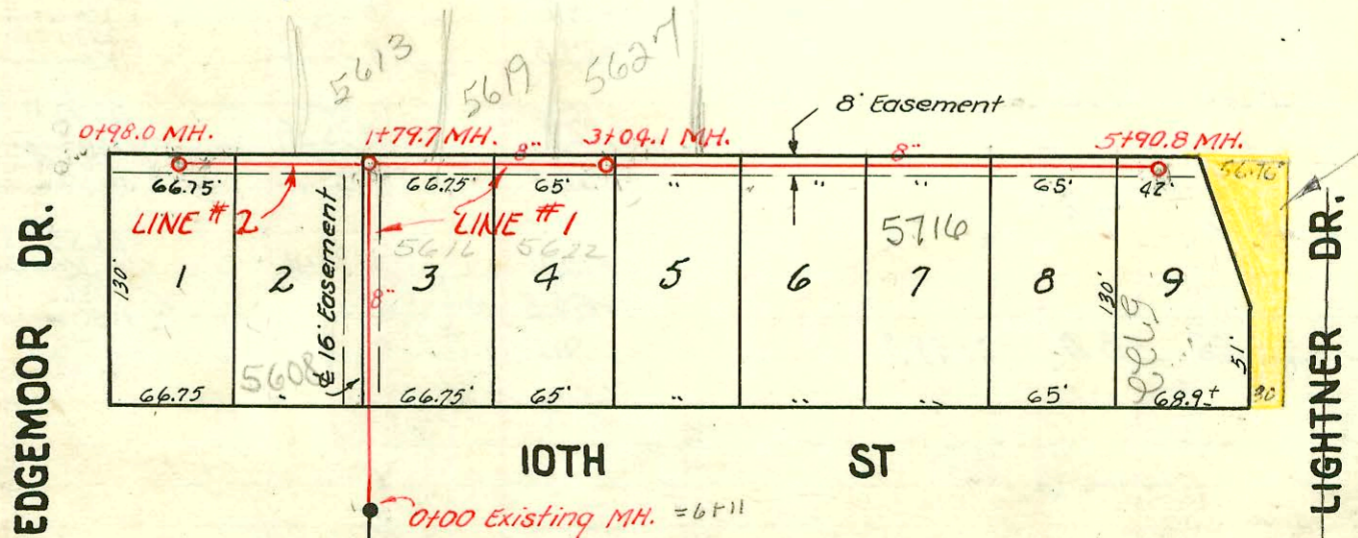


(Build 1962)
EXTENSION OF LAT. 19, DIST. AS, S.S. #12
PRIVATE PROJECT, BOOKED FROM PLANS JULY 1968

(Build 1968)
SW 1/4 of Lat. 19, Dist. AS, S.S. #12
Private Prop. Booked from Plan, A-171



LAT. 19, DIST. AS, S.S. #12
W. B. CARTER - JUNE, 1952
PROJ. NO. C21-89, BK. JF 59



St. Vacated
Ord. No. 20-784

Rep 2052-01235 04/30/62 5716 E 10th
Reddi Root R¹ Replace 13" IN Middle of
sewer - 4" SCH 40 PVC - 1/4" fall
Rep-2000-02360-5716 E 10th-1013000
Reddi-Root-4" SCH 40 - Install TWINEO
+ Upper 8"

LAT. 14, D.C.S. #2, S.S. #12
W. B. CARTER - CONTR.
Booked July 22, 1952
Proj. C22-36, Bk. JF 62

CONSTRUCTION RECORD

SERVICE RECORD

STATION	ELEVATION		Depth	MANHOLE	4-INCH "Y" BRANCHES		No. of Permit		House Number		DATE OF PERMITS	
	Ground	Grade			North	South	North West	South East	North West	South East	North West	South East
0	95.8	90.19	5.6	0+00 New MH.								
1	96.0	90.29	5.7									
2	95.6	90.39	5.2									
3	95.6	90.40	5.2	2+11.1								
4	90.6	90.49	0.1	3+04.0								
4	93.5	90.59	2.9									
	93.9	90.62	3.3	4+23.1	6" Stud lead		#19999		2431 R		1-26-53	
	94.4	90.67	3.7	+83.4	44.9' of 6"		#3983		Poplar Dr.			
5	94.3	90.70	3.6		5+44.1	4+99.0						
					51.2'-6" lead							
6	94.3	90.80	3.5		6+08.0	5+59.3						
					51.6'-6" lead			2397	2423 S		1-15-81	
	94.5	90.83	3.7	6+25.4					Poplar			
7	94.7	90.90	3.8		6+59.6	6+44.6		#5914	2419 Poplar Dr.		7-23-53	
					56.7'-6" lead		#5915		2425 Poplar Dr.			
8	93.7	91.00	2.7	7+95.8		7+14.0						
	93.7					+78.2						
						Y EAST						
						8+15.0		#2848	2450		10-13-52	
						21.0'-6" lead		#2849	Poplar Dr.		10-13-52	
						8+54.5						
9	95.0	91.10	3.9		8+84.5	Y SOUTH		#2093	2432		8-7-52	
					9+51.7	9+99.5		#5912	2415		7-23-53	
						50.2'-6" lead						
10	94.7	91.20	3.5		10+46.7			#2092	2412		8-7-52	
					16.4'-6" lead							
11	94.1	91.30	2.8			Y WEST						
	94.2	91.31	2.9	11+09.5								
12	94.5	91.40	3.1		11+22.4							
	95.3	91.45	3.9	12+43.8	12+37.0		646		12401		4-27-56	
					12+39.0		C49735		2407 S		6-2-75	
							C63858		2409 E		11-3-77	
									2409 E			
Extension to Lat. 19, Dist. A.S., S.S.#12				Exist.								
0+00	96.3	90.82	5.5	0+00								
	95.2	90.94	4.3	0+62.0								
2nd Ext. LAT 19, Dist A.S., S.S.#12												
0+00	95.6	91.29	4.3	0+00								
	95.7	91.44	4.3	0+77	- 4" STUB S		C11708		2434		11-26-68	
									S. Poplar			

Y SOUTH

Line #1

0	198.7	187.20	11.5	0+00 Existg MH.								
1	198.2	187.30	10.9									
	198.4	187.38 out	11.0									
		187.57 in	10.8	1+79.7								
2	198.1	187.60	10.5		2+02.0		#56		5616		2-10-54	
					+54.6		5496		E. 10th		3-29-52	
							#2022		E. 10th		7-30-52	
3	196.2	187.70	8.5			3+27.5	#00750		5702		8-10-80	
	196.1	187.71	8.4	3+04.1		+90.6	#6589		E. 10th		9-29-53	
4	194.9	187.80	7.1			4+60.6	#1011		5728		5-21-54	
						+5+26.2	2000-02360		5716		10-20-50	
5	193.8	187.90	5.9			+83.9	#57		E. 10th		2-10-54	
							13031		10th		2-6-53	
							5887		10th		7-20-53	
	191.4	187.99	3.4	5+90.8								

Line #2

0	198.4	187.57	10.8	0+00 = 1+79.7 in Line #1		0+24.6						
						+82.0		#1765	1102 N. Edgemoor		8-16-54	
	200.0	187.68	12.3	0+98.0								

2128 - Top 5627 Coe Court - 9-28-54 - Jack Durham
 # 2063 - Top 5613 Coe Court - 9-20-54 - Joe McDonald
 # 2064 - Top 5619 Coe Court - 9-20-54 - Joe McDonald
 # 4362 - Top 2458 S Poplar Dr. - 3-5-53 - Callum O'Byrne
 # 4156 - Top 2462 S Poplar Dr. - 2-20-53 - Callum O'Byrne
 # 4157 - Top 2466 S Poplar Dr. - 2-20-53 - Callum O'Byrne
 # 5587 - Top 2411 S Poplar Dr. - 6-17-53 - Reynolds O'Byrne
 # 5588 - Top 2409 S Poplar Dr. - 6-17-53 - Reynolds O'Byrne
 # 3984 - Top 2470 S Poplar Dr. - 2-2-53 - Eugene Reynolds
 # 2094 - Top 2440 Poplar Dr. - 8-7-52 - Callum O'Byrne
 # 2628 - Top 2454 Poplar Dr. - 9-23-52 - Callum O'Byrne
 # 3717 - Top 5608 E. 10th - 1-8-53 - Jess Lajo
 # 5913 - Top 2413 S Poplar Dr. - 7-23-53 - Reynolds - #22256 R - 2413 S Poplar 12-20-88 - (H 015 TRP)
 # 4660 - Top 2474 S Poplar Dr. - 9-17-53 - Reynolds
 # 4661 - Top 2478 S Poplar Dr. - 9-17-53 - Reynolds
 # 2207 - Top 5605 Coe Court - 10-20-54 - Reynolds
 # 2700 - Top 5633 Coe Court - 11-29-54 - Reynolds

2207 - Top 5605 Coe Court - 10-20-54 - Reynolds
2700 - Top 5633 Coe Court - 11-29-54 - Reynolds

4666 - Top 5728 E. 10th - 8-12-55 - vehicle 4666

Top # 48300 - 20th - 2442 S Poplar
1-25-57 - Dale

66275 560300 St. R. 5-8-79 at opening
#22256 R - 2413 S Poplar 12-20-88 - (H 015 TRP)