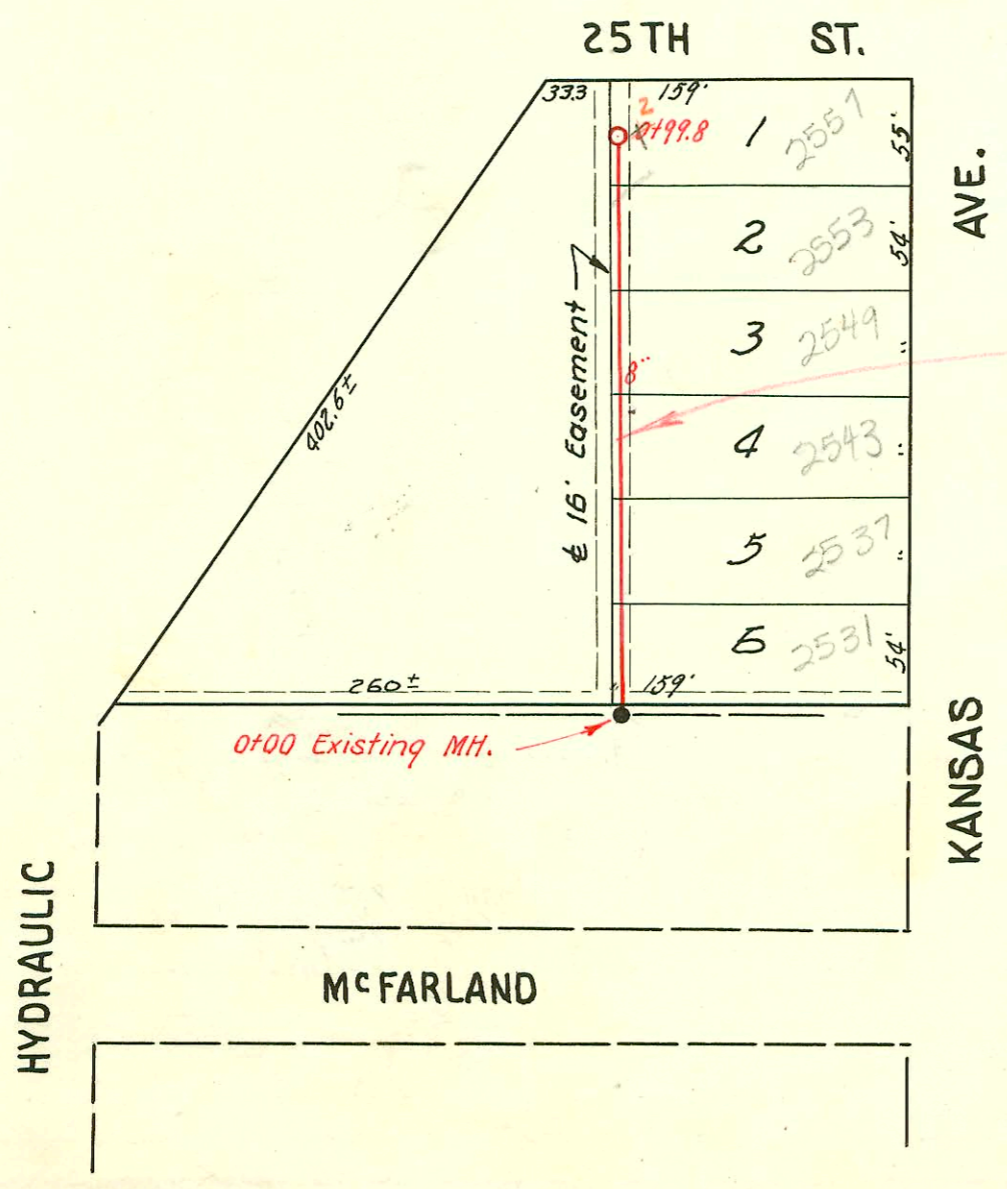


LAT. 6, D.C.S. # 2, S.S. # 12
 W. B. CARTER - CONTRACTOR
 Booked July 22, 1952
 Proj. NO. C21-51, Bk # JF 62



NOTE:
 No charge for taps
 on West side of
 line.

SUB LAT. 1, LAT. 22, DIST. T. # 12
 UTILITY CONTRACTOR INC.
 BK. JF. 62, PROJ. NO. C22-23
 Booked Sept. 8, 1952

CONSTRUCTION RECORD

SERVICE RECORD

STATION	ELEVATION		Depth	MANHOLE	4-INCH "Y" BRANCHES		No. of Permit		House Number		DATE OF PERMITS	
	Ground	Grade			North West	South East	North West	South East	North West	South East	North West	South East
0	118.5	110.89	7.6	0+00 New MH.								
					0.51.0							
1	119.0	110.97	8.0	0+70.6								
	118.6	110.99	7.6		1+61.8							
2	120.1	111.09	9.0	13.7' (MH was found)	2+13.6							
	119.9	111.19 out 113.18 in	8.7	11.9' 2+93.2								
3					3+26.6							
4	122.5	113.29	9.2									
5	123.5	113.39	10.1		NORTH	SOUTH						
	124.7	113.43 out 117.43 in	11.3 7.3	5+32.3								
6					5+56.2							
	123.7	117.50	6.2		6+34.7							
7	126.0	117.60	8.4		7+25.0	7+28.0	#1828	#1829				
	126.4	117.64	8.8	7+37.9								

2001-01041-4130101-2531 N Kansas - Padgett Exc - City Wye Repair - Predco 19.4' N of MH - ITWIN CO, 1V22, 1V45

Y East

0+0	126.2	119.55	6.6	Existing MH. 0+00								
					4" sch 40 CITY REPAIR		2001-01041		2531 N R	see above	4-30-01	
					0+19.4		#3537		2537 N R		12-16-52	
					0+63.5		#3538		2537 N R		12-16-52	
1+0	126.9	119.66	7.2		4" sch 40 CITY REPAIR		16-55947		2543 N R		4-19-46	
					1+14.7		#3539		2543 N R		12-16-52	
					1+62.8		#3540		2543 N R		12-2-52	
2+0	127.7	119.76	7.9		2+10.7		#3541		2553 R 5-07-11		12-16-52	
					+54.5	Seal off	#3542		2565		12-27-66	
	127.9	119.85	8.0	2+99.8	2+86.5		C656		2565		10-31-66	

No W. Wyes
See Note.

#5269 Top - 2560 N Hydraulic - 5-20-53 - M. E. Phipps - B4756 - 2560 N Hydraulic - Frederick Pkg Co - 12-13-65
 #5270 Top - 2548 N Hydraulic - 5-20-53 - M. E. Phipps
 #12619 Top 2119 Brentwood - 1-28-59 Robert Jost MH 7+37.9 N Wide
 #12619 Top 3715 Clark at Bradford 4-7-60 (4+50.3)
 #B4747 Seal off - 2548 N Hydraulic - Phil Dranching - 12-10-65