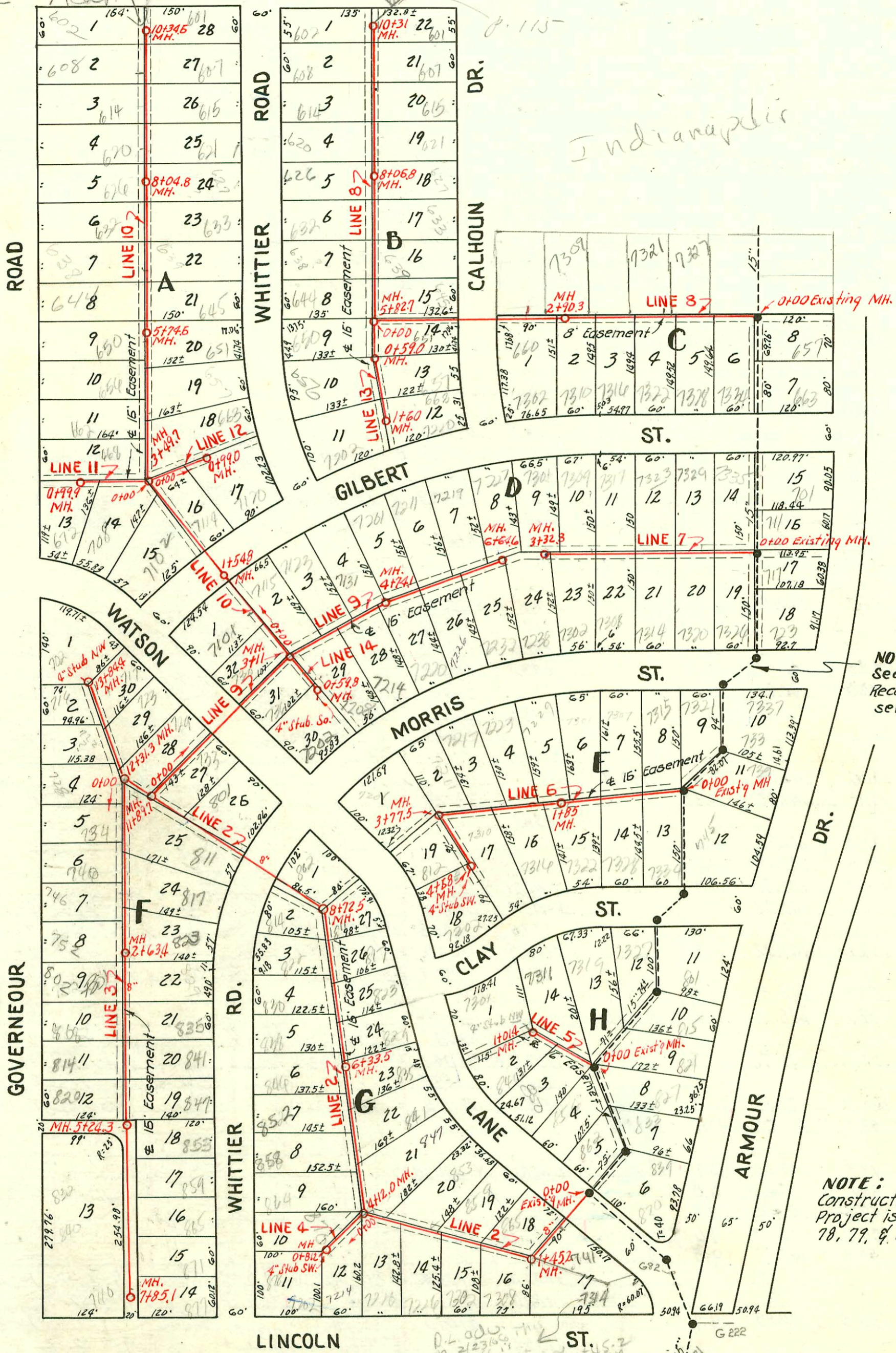


Refer to G36 for attention
Addition Line



NOTE:
See page 82 for Const.
Record of Existing 15"
sewer.

NOTE:
Construction Record for this
Project is shown on pages
78, 79, & 80.

2003-00019-1/3/03- 702 S Governour Rd- Reddy Rostr- 4" PVC (MH stub) avaz, adirco
 2002-00715- 3/15/02- 846 S Whittier- A Good Piber- twinco, 4" sch 40 PVC 14" fall, 2V45, 1H22,
 tied back to clay tile 7' from main
 2002-01443- 5/21/03- 7311 E Clay- Wichita Exc- tied to wye with donut, 2 directional co, 4" sch 40 PVC
 14" fall, 1V22, 1V45

LAT. I, SUBMAIN 5, W. I. S.
 W. B. CARTER - 1952
 Bk. Misc. JT., PROJ# C22-24
 AUG. 5, 1952

SCALE 1"=150'

CONSTRUCTION RECORD

SERVICE RECORD

LINE NO.

LINE NO.	STATION	ELEVATION		Depth	MANHOLE	4-INCH "Y" BRANCHES		No. of Permit		House Number		DATE OF PERMITS	
		Ground	Grade			North West	South East	North West	South East	North West	South East	North West	South East
#2	0+0	140.4	134.27	6.1	0+0 Existg MH.								
	1+0	140.8	134.67	6.1									
		141.5	134.85	6.7	1+45.2								
	2+0	143.0	135.07	7.9		1+59.0	1+62.0	#6472	#6531	865	7308 E	9-17-53	9-23-53
						2+27.6	2+30.6	#6471	#6530	857	7302 E	9-17-53	9-23-53
						+93.7	2+96.7	#6470	#6529	858	7306 E	9-17-53	9-23-53
	3+0	146.0	135.47	10.5									
						3+87.8	3+64.0		#6528	858	7320 E		9-23-53
	4+0	148.3	135.93	12.4	4+12.0	Y WEST	Y EAST						
						4+31.2			#5257	864	Whittier	5-19-53	
						4+79.0			#5258	858	Whittier	5-19-53	
	5+0	146.8	136.27	10.5					#5259	852 R	Whittier	5-19-53	9-30-94
						5+52.8	5+00.7		#5259	852 R	Whittier	5-19-53	9-17-53
						5+90.8		#5260	846	Whittier	5-19-53	5-8-53	
6+0	146.0	136.67	9.3		6+12.5								
	146.5	136.94	9.6	6+33.5									
						6+64.4		#5135	838	Whittier	5-19-53	5-8-53	
7+0	146.7	137.07	9.6		6+72.8			#5261	838	Whittier	5-19-53	5-8-53	
					7+32.8	7+24.4		#5134	830 R	Whittier	5-19-53	5-8-53	
						7+87.4		#5133	852	Whittier	5-19-53	5-8-53	
8+0	146.8	137.47	9.3		7+96.8	8+49.9	8+46.9	#5466	814	Whittier	6-4-53	5-8-53	
	146.4	137.76	8.6	8+72.5	Y NORTH	Y SOUTH		#5465	814	Whittier	6-4-53	5-8-53	
					8+95.1								
9+0	146.9	137.88	9.0										
10+0	148.3	138.28	10.0		10+38.5								
11+0	149.0	138.68	10.3		11+47.6	11+50.6		#6166	733 R	Whittier	8-13-53		
	150.3	139.03	11.3	11+89.7									
12+0	150.4	139.08	11.3		12+07.0			#5131	729	Whittier	5-8-53		
	150.7	139.20	11.5	12+31.3	Y WEST	Y EAST							
					12+78.3	12+71.0		#5130	723	Whittier	5-8-53		
13+0	150.6	139.48	11.1		13+41.4	13+38.4		#1919	717	Whittier	11-12-53	5-8-53	
	150.5	139.80	10.7	13+84.4	(4" Stub NW)			#5129	707	Whittier	11-12-53	5-8-53	
								#2456	2003	Whittier	11-12-53	#1303	
#3	0+0	150.7	139.40	11.3	0+00 = 12+31.3 in Line #2								
	1+0	151.2	139.80	11.4		0+19.7							
						1+14.0							
							1+29.2						
	2+0	152.3	140.20	12.1		1+79.4							
							2+11.3						
						2+34.6							
		153.4	140.45 in 144.45 out	13.0 9.0	2+63.4								
	3+0	153.9	144.60	9.3		2+98.8	2+95.8						
						3+58.8	3+55.8						
	4+0	155.4	145.00	10.4		4+19.0	4+16.0						
						+76.0	+73.0						
	5+0	155.9	145.40	10.5		4+84.3							
	156.0	145.50	10.5	5+24.3									
					5+39.7	5+36.7							
					+97.3	5+94.3							
6+0	156.5	145.80	10.7		6+57.7	6+54.7							
7+0	156.6	146.20	10.4		7+18.0	7+15.0							
					+77.5	+74.5							
	156.1	146.54	9.6	7+85.1									
#4	0+0	148.3	139.00	9.3	0+00 = 4+12 in Line #2	Y NORTH	Y SOUTH						
		150.7	139.33	11.4	0+81.2	(4" Stub SW)							
#5	0+0	140.8	133.15	7.7	0+00 Existing MH.								
	1+0	141.8	135.57	6.2	1+01.4	(4" Stub NW)							

Note: This project continues on page #79

#1826 - 7308 R. Whittier - 9-23-53 - Michael + Henry Co. #6167 - top - 701 Whittier - Whittier City. 8-13-53

#2449 - top - 7306 E. Morris - 9-23-53 - Michael + Henry, Inc. #5464 - top - 807 Whittier - Whittier City. 6-4-53

#2446 - top - 7226 E. Morris - 10-22-52 - Michael + Henry, Inc. #5078 - top - 7202 E. Morris - Whittier City. 5-7-53

#2917 - top - 849 Whittier Rd. - 8-10-53 - Whittier City. #5131 - top - 717 Whittier - Whittier City. 5-8-53

#6159 - top - 849 Whittier Rd. - 9-17-53 - Whittier City. #5130 - top - 723 Whittier - Whittier City. 5-8-53

#6469 - top - 849 Whittier Rd. - 9-17-53 - Whittier City. #5133 - top - 852 Whittier - Whittier City. 5-8-53

#6532 - top - 7314 E. Lincoln - 9-23-53 - Whittier City. #5134 - top - 830 Whittier - Whittier City. 5-8-53

#6866 - top - 734 Whittier - 11-12-53 - Whittier City. #5135 - top - 838 Whittier - Whittier City. 5-8-53

#B4644 - top - 849 Whittier - 12-13-65 - Whittier City. (6+78.2)