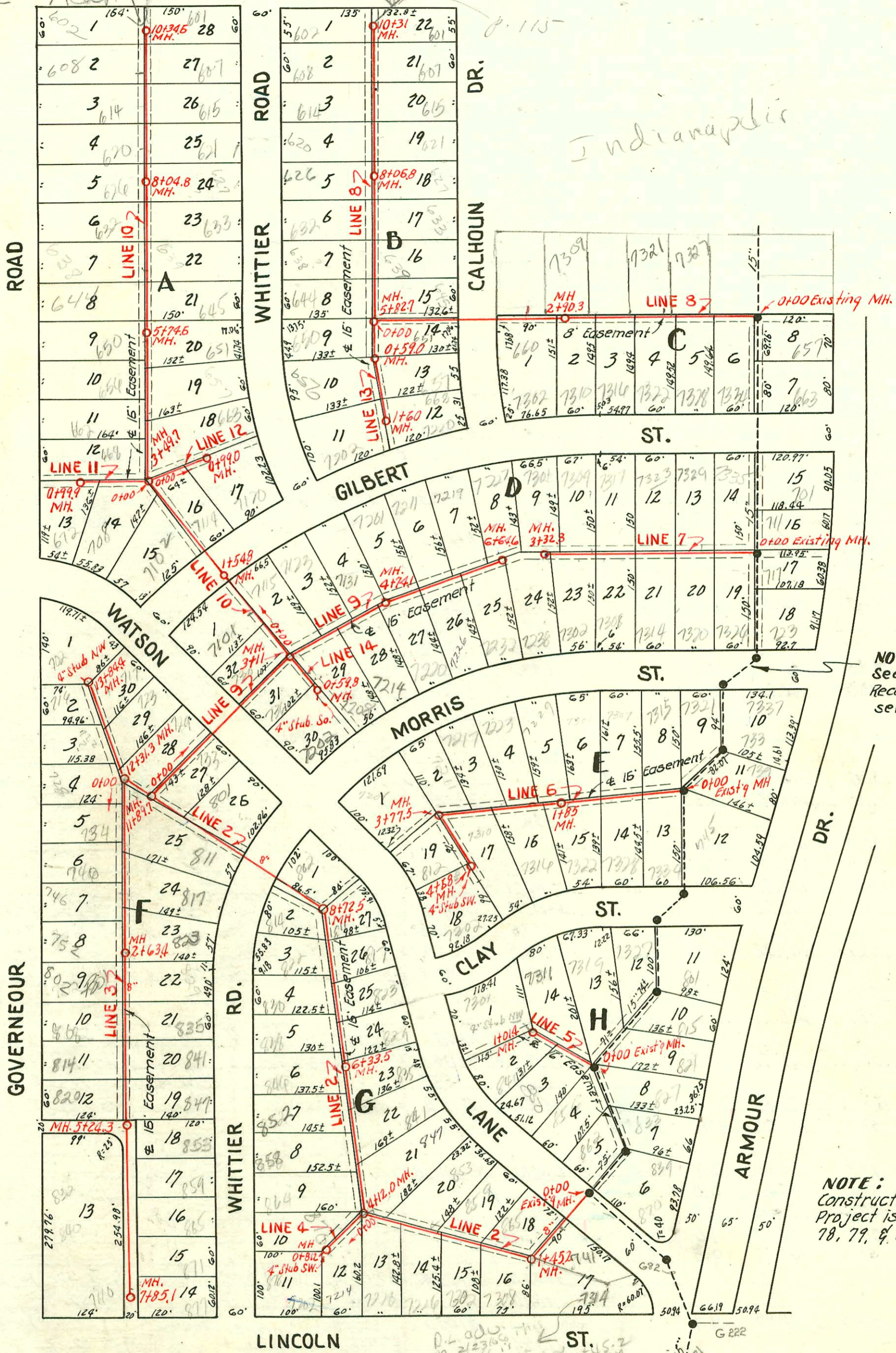


Refer to G36 for attention  
Addition Line



NOTE: See page 82 for Const. Record of Existing 15" sewer.

NOTE: Construction Record for this Project is shown on pages 78, 79, & 80.

2003-00019-1/3/03- 702 S Governour Rd- Reddy Rostr- 4" PVC (MH stub) avaa, 2dirco  
 2002-00715- 3/15/02- 846 S Whittier- A Good Piber- twinco, 4" sch 40 PVC 14" fall, 2V45, 1H22,  
 tied back to clay tile 7' from main  
 2002-01443- 5/21/03- 7311 E Clay- Wichita Exc- tied to wye with donut, 2 directional co, 4" sch 40 PVC  
 14" fall, 1V22, 1V45

**LAT. I, SUBMAIN 5, W. I. S.**  
 W. B. CARTER - 1952  
 Bk. Misc. JT., PROJ# C22-24  
 AUG. 5, 1952

SCALE 1"=150'

CONSTRUCTION RECORD

SERVICE RECORD

LINE NO.

LINE NO.	STATION	ELEVATION		Depth	MANHOLE	4-INCH "Y" BRANCHES		No. of Permit		House Number		DATE OF PERMITS		
		Ground	Grade			North West	South West	North West	South East	North West	South East	North West	South East	
#5	0+0	143.4	137.05	6.4	0+0 EXIST'G MH.	4" 40-0 0+25.0 +83.0	0+22 +80.0	2002 65 #4527 #4531	(7315) 7313 E. R 7307 E 7328	7334 7328 Clay	4-11-02 3-19-53 2-25-53		3-19-53	
	1+0	145.3	137.45	8.9		1+40.0	1+37.0	#4211 #4530	7301 E. 7322	7322 Clay	2-25-53		3-19-53	
		148.2	137.79	10.4	1+85	1+92.8		#4210	7229 E. 7316	7316 Clay	2-25-53		3-19-53	
	2+0	148.0	137.85	10.2		2+34.4 +82.3	2+22.2	#4209 #4529	7223 E. 7319 E. 7319 E.	7316 Clay	8-22-53 2-25-53		3-19-53	
	3+0	147.0	138.25	8.8		3+30.6 4" stub NW 3+94.0	3+07.4	#4528	7211 E. 7301 E.	7310 Clay	2-25-53		3-19-53	
		145.7	138.55	7.1	3+77.5			#4527 94937 #6282	7201 E. 7301 E.	7301 E. 7301 E.	1-21-54 8-25-53			
	4+0	145.4 144.7	138.65 138.93	6.8 5.8		4+58.5	(4" stub SW)	#6283	7302 Clay		8-25-53			
#7	0+0	144.4	138.69	5.7	0+0 EXIST'G MH.	0+22.3 +82.6	0+19.3 +79.6	#2329 #2328	7328 E. 7328 E.	7328 E. 7328 E.	8-26-52 8-26-52			
	1+0	146.4	139.09	7.3		1+43.1	1+40.1	#2326	7328 E. 7328 E.	7328 E. 7328 E.	8-26-52			
	2+0	150.9	139.49	11.4		2+60.9	2+57.9	#2325 #2450	7301 E. 7301 E.	7301 E. 7301 E.	8-26-52		9-9-52	
	3+0	153.6	139.89	13.7		3+15.4		#2324	7301 E. 7301 E.	7301 E. 7301 E.	1-27-52 8-26-52			
		153.9	140.02	13.9	3+32.8		3+24.5							
#8	0+0	146.7	140.14	6.6	0+0 EXIST'G MH.	Y NORTH 0+19 +79.8	Y SOUTH 0+22.0 +82.8	#3856 #2266	7335 E. 7328 E.	7334 E. 7328 E.	1-23-53		P-22-52	
	1+0	148.5	140.52	8.0		1+43.3	1+40.3	#3855 #2267	7328 E. 7328 E.	7328 E. 7328 E.	1-23-53		8-22-52	
	2+0	150.0	140.92	9.1		2+08.5	2+00	#2269	7316 E. 7316 E.	7316 E. 7316 E.	8-22-52		8-22-52	
						2+72.9	2+60.7	#3857 #2270	7309 E. 7309 E.	7309 E. 7309 E.	1-23-53		8-22-52	
	3+0	150.7 151.1	141.28 141.32	9.4 9.8	2+90.3		3+22.4	#2271	7302 E. 7302 E.	7302 E. 7302 E.	8-22-52		8-22-52	
	4+0	153.3	141.72	11.6		3+35.9								
	5+0	156.5	142.12	14.5										
	6+0	156.4	142.45	14.3	5+82.7	Y WEST 6+05.2 +59.6	Y EAST 6+02.2 +56.6	#2215 #2209	644 E. 639 E.	644 E. 639 E.	9-27-52		7-26-00 8-18-52	
	7+0	157.1	145.92	11.2		7+25.5 +85.9	7+22.5 +82.9	#2208 #2207	637 E. 637 E.	637 E. 637 E.	8-2-53		8-18-52	
	8+0	157.7 157.7	146.32 146.35	11.4 11.4	8+06.8		8+47.1 8+44.1	#2206 #2205	620 E. 615 E.	621 E. 615 E.	7-25-52		8-18-52	
9+0	158.2	146.72	11.5		9+07.1 +62.4	9+04.1 +59.4	#2204 #2203	607 E. 607 E.	607 E. 607 E.	9-27-52		8-18-52		
10+0	158.3 158.1	147.12 147.25	11.2 10.9	10+31.0	10+18.5 10+15.5	10+15.5	#2203	601 E. 601 E.	601 E. 601 E.	9-27-52		8-18-52		
#9	0+0	149.9	139.23	10.7	0+00=11+88.7 in line 2	Y NORTH 3+35.4 +84.7	Y SOUTH 3+38.4 +84.7	#2435 #2914	7115 E. 7123 E.	7208 E. 7208 E.	9-8-52		10-22-52	
	1+0	148.4	139.53	8.8		4+35.4	4+09.6	#2434 #2915	7131 E. 7131 E.	7214 E. 7214 E.	9-8-52		7-27-52 10-22-52	
	2+0	147.7	140.03	7.7		4+74.1	4+81.6	#2433 #2916	7201 E. 7201 E.	7220 E. 7220 E.	9-8-52		10-25-51 10-22-52	
	3+0	150.0 150.3	140.43 140.47	9.6 9.8	3+11.0		4+92.7	#2432	7201 E. 7201 E.	7201 E. 7201 E.	9-8-52			
	4+0	150.5	140.83	9.7		4+45.7	4+48.7	#2430	7219 E. 7219 E.	7232 E. 7232 E.	9-8-52			
	5+0	152.1	141.23	10.9		6+05.0	6+16.4	#2429	7227 E. 7227 E.	7227 E. 7227 E.	9-8-52		10-22-52	
	6+0	154.4	141.53	12.8		6+56.5								
		154.5	141.89	12.6	6+69.6									

NOTE: This project continues on page #80

#2329 - 24 - 7317 E. Hillcut - 8-26-52 - Nichell & Hensley, Inc.  
 #2431 - 24 - 7211 E. Hillcut - 9-8-52 - Nichell & Hensley, Inc.  
 #2695 - 24 - 632 Whittier - 9-27-52 - Nichell & Hensley, Inc.  
 #2451 - 24 - 7238 E. Morris - 9-27-52 - Nichell & Hensley, Inc.  
 #6281 - 4" stub west(?) 7201 E. Morris - 8-25-53 - White Pkly  
 #3774 - 24 - 636 Callahan - 1-14-53 - Nichell & Hensley, Inc. (3+19.3) repair - 9-26-68

2002-01055-4/1/02-7315 E Morris- Reddi Rooter- 2 Fernco, 1 twin co, 4" 40 PVC, shallow

2003-01567- 6/17/03- 7329 E Gilbert- Reddi Rooter- Riser for new addition- 2-4" Directional CO, 4" sch 40 PVC, 1/4" fall, tied back to clay tile

2002-00107- 1/14/02- 7321 E Indianapolis- Dales Plog Svc- 4" PESDRIT- Pipe burst replacement, 147' E of mh 060 (1147) 1V45, Predco Saddle

2002-01826- 7/2/02- 7310 E Gilbert- Reddi Rooter- 4" PE SDR17 pipe burst replacement- 1V22, 1V45, deep, 29.6' E of MH 2+90.3 (2+60.7)

3

2000-01615- 7/26/00- 645 S Calhoun - Padgett Ex- 4" SCH40- city repair 4" Predco 19.6' N of MH 5+82.7 (6+02.3) 1 Fernco- 1 TWIN CO- 1V22- 2V45

# 92-730 -7

1-14-92

7308 E Morris - Jess Mc Cullough (4 sch 40 PVC tap 136' E of MH)