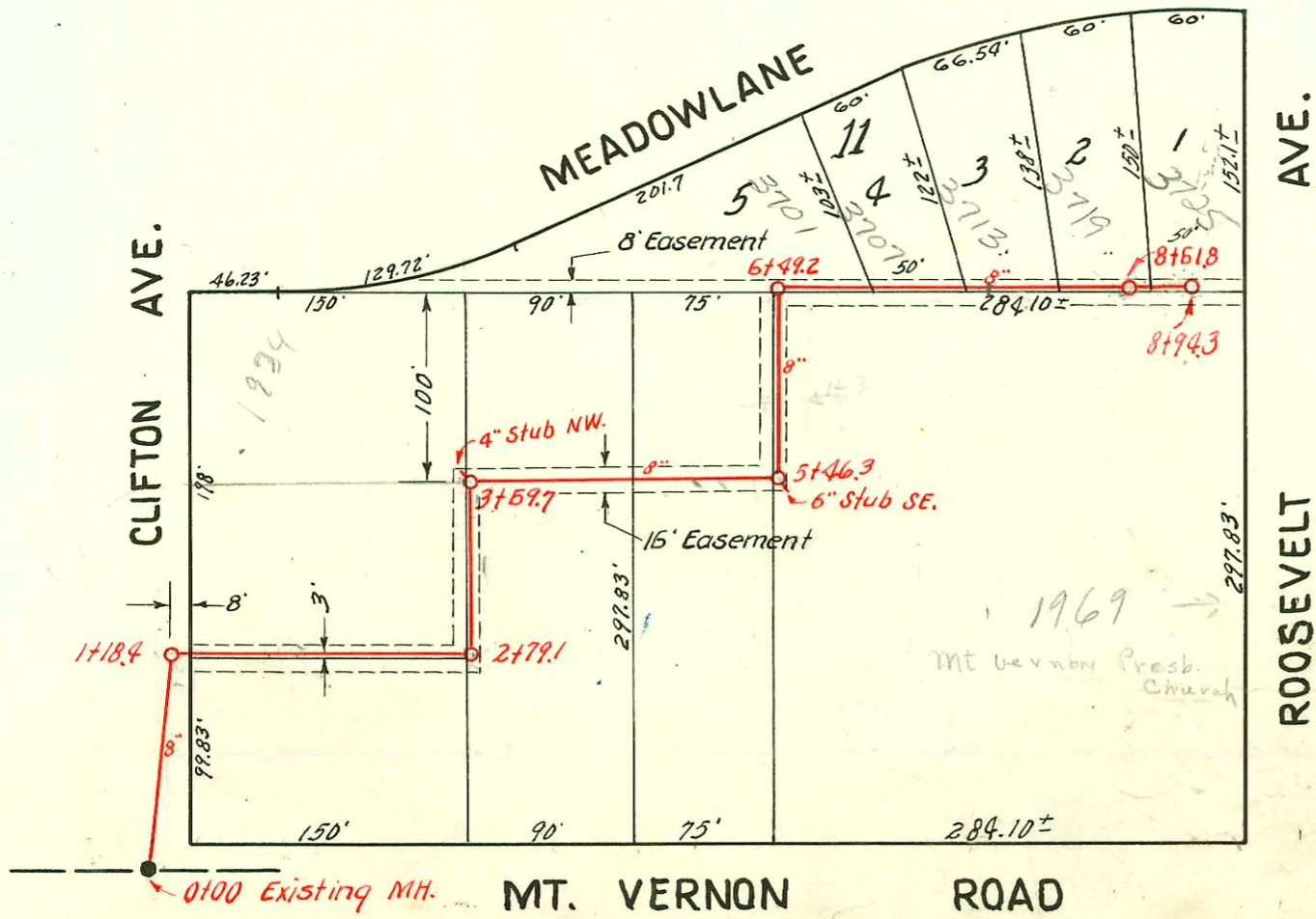


2002-00512-2/25/02-7101 E Gilbert- Padgett EXC- 92' S of MH 1+54.8(0+62.8) 4" SCH 40 PVC -6" Predco
1/4" fall, 1H45, 2H22, 1V45

2000-00429-2/15/00-656 S Gouverneur -Padgett Ex- 4" SCH 40 Predco 84.6' of MH 5+74.5(4+87.7) 1 Fernco, 1 Twinco, 3V22

2000-01614-7/26/00-651 S Calloun- Padgett EXC-4" SCH 40, CITY Repair, Predco-27' S of MH 0+00(0+07) 1-Fernco,
1-TWIN CO, 2H22, 1V45

2003-00259 1/29/03 7202 E MORRIS- 4" PVC, tied to clay tile (permit was issued to replace entire
line)



LAT. 20, D.C.S. 2, S.S. 12
W. B. CARTER ~ CONT.
BK. JF. 60, PROJ. NO. C22-43
Booked Aug. 7, 1952

CONSTRUCTION RECORD

SERVICE RECORD

LINE NO.

LINE NO.	STATION	ELEVATION		Depth	MANHOLE	4-INCH "Y" BRANCHES		No. of Permit		House Number		DATE OF PERMITS		
		Ground	Grade			North West	South East	North West	South East	North West	South East	North West	South East	
#10	0+0	151.0	140.67	10.3	0+00=3+11 in Line 9 4' pred. 0+02.8 +88.0	0+27.4	0+24.4	#5077 7002-00512 5081	730 7101 & 7102	R see next pg	5-4-53 5-2-53			
	1+0	151.0	141.07	9.9	1+54.8									
	2+0	152.0	141.47	10.5		2+26.0		#5126	7102E 7102		5-8-53			
	3+0	153.1	141.87	11.2										
		153.5	142.07 out 145.07 in	11.4 8.4	3+49.7									
	4+0	153.9	145.27	8.6		4+29.5	3+86.0	#2930 #2931	668 S.D. 663 R 662 B 661 A	see next pg	3-4-77 10-22-52		9-19-52	
					4+89.8	4+53.0		#2929	657-R 656 A 655 B	see next pg	10-22-52		9-26-88	
	5+0	155.6	145.67	9.9		5+28.8	5+28.8	#2928	651 650 B		7-8-91 10-22-52		9-19-52	
					5+74.6	5+47.4								
	6+0	157.6	149.07	8.5		6+07.6	6+04.6	#2927	644 638 R 637 B 636 A		10-22-52		9-19-52	
					6+67.5	+64.5	#2926	632 631 B 630 A		10-22-52		9-19-52		
7+0	159.8	149.97	10.3		7+27.1	7+24.1	#2925	626 625 B 624 A		10-22-52		9-19-52		
					+89.6	+86.6	#2924	620 R 619 B 618 A		10-22-52		9-19-52		
8+0	160.8	149.87	10.9		8+04.8	8+49.7	#2923	614 613 B 612 A		10-22-52		9-19-52		
9+0	161.2	150.27	10.9		9+07.3	9+04.3	#2922	608 607 B 606 A		10-22-52		9-19-52		
					+69.8	+66.8	#2921	602 601 B 600 A		10-22-52		9-19-52		
10+0	161.5	150.67	10.8		10+26.3	10+23.3	#2920							
	161.9	150.82	11.1	10+34.6										
#11	0+0	153.5	145.06	8.4	0+00=3+49.7 in Line 10	Y NORTH 0+24.0	Y SOUTH 0+27.0							
		153.1	145.46	7.6	0+99.9	0+96.3		#60194	668 S. 667 R		3-9-77			
#12	0+0	153.5	145.06	8.4	0+00=3+49.7 in Line 10	0+26.5	0+23.5	#2919	7120E 7114 E			10-22-52		
		154.5	145.45	9.0	0+99.0			#3366				12-2-52		
#13	0+0	156.7	145.45	11.3	0+00=5+82.7 in Line 8	Y WEST 0+24.3	Y EAST 0+27.3	#2216	650 649 B 648 A	651 R see next pg	7-26-00 8-18-52			
		156.7	145.68	11.0	0+59.0	+66.8		#2217	657 656 B 655 A		9-27-52 11-21-86 9-27-5		8-18-52	
	1+00	156.6	145.85	10.8		1+29.5	1+26.5	#2213	650 649 B 648 A		1-3-77 8-15-5		8-21-52	
	156.8	146.06	10.7	1+60.0										
#14	0+0	150.3	142.00	8.3	0+00=3+11.0 in Line 9	0+26.0	0+23.0	#5080	736 735 B 734 A	737 R see next pg	4-53	10-26-01	1-29-05	
		149.5	142.24	7.3	0+59.8	(4" Stub South)								
	0+0	116.9	104.84	12.1	0+0 Exist'g M.H.	W. 6" 0+184.0								
1+0	117.0	105.24	11.8		N. 1+18.4	1+53.0	4207	3530 3536 3510		3-27-57				
	116.9	109.29	7.6		N. 1+18.4	1+53.0								
2+0	122.1	109.64	12.5		S. 2+19.3	2+22.3	#3322	3530 3536 3510			8-27-52			
	127.6	113.98	13.6		S. 2+19.3	2+22.3	#4395				4-9-53			
3+0	127.1	114.04	13.1		N. 3+19.8	3+19.8	#3077	3510 3510			8-18-53			
	124.9	118.84	6.1		N. 3+19.8	3+19.8					11-1-52			
4+0	126.0	118.98	7.0		N. 4+85.6	4+84.7	#6275	3640E 3640 3540			12-28-67			
5+0	131.4	119.38	12.0		S. 5+07.3	5+07.3	#3868	3640 3540			1-26-53			
	133.3	119.54 out 121.52 in	13.8 11.8		S. 5+46.3	5+46.3	#3869	3640 3540			1-26-53			
					E. 5+79.1						8-7-52			
6+0	132.8	121.71	11.1		N. 6+61.2	6+61.2								
	134.5	121.91	12.6		N. 7+11.2	7+11.2								
7+0	135.4	125.12	10.3		N. 8+11.6	8+11.6	#3785	3707 3713			10-12-53			
					N. 8+53.9	8+53.9	#3784	3719 3719-R			11-14-53			
8+0	137.5	125.52	12.0		N. 8+53.9	8+53.9	#3783	3719-R 3719			10-14-53			
	138.8	125.77 out 132.27 in	13.0 6.5		N. 8+61.8	8+61.8	#3782	3725 3725-R			3-5-92			
	138.8	132.37	6.4		N. 8+85.8	8+85.8	#3786	3725 3725-R			1-14-53			

#1643 1959 R. Roosevelt - Green Pkwy. - 8-2-54

#5127 - Jay - 672 Lombard - White Pkwy. 5-8-53
#5138 - Jay - 708 Wilson Lane - White Pkwy. 6-8-53
R 13182 3-11-95