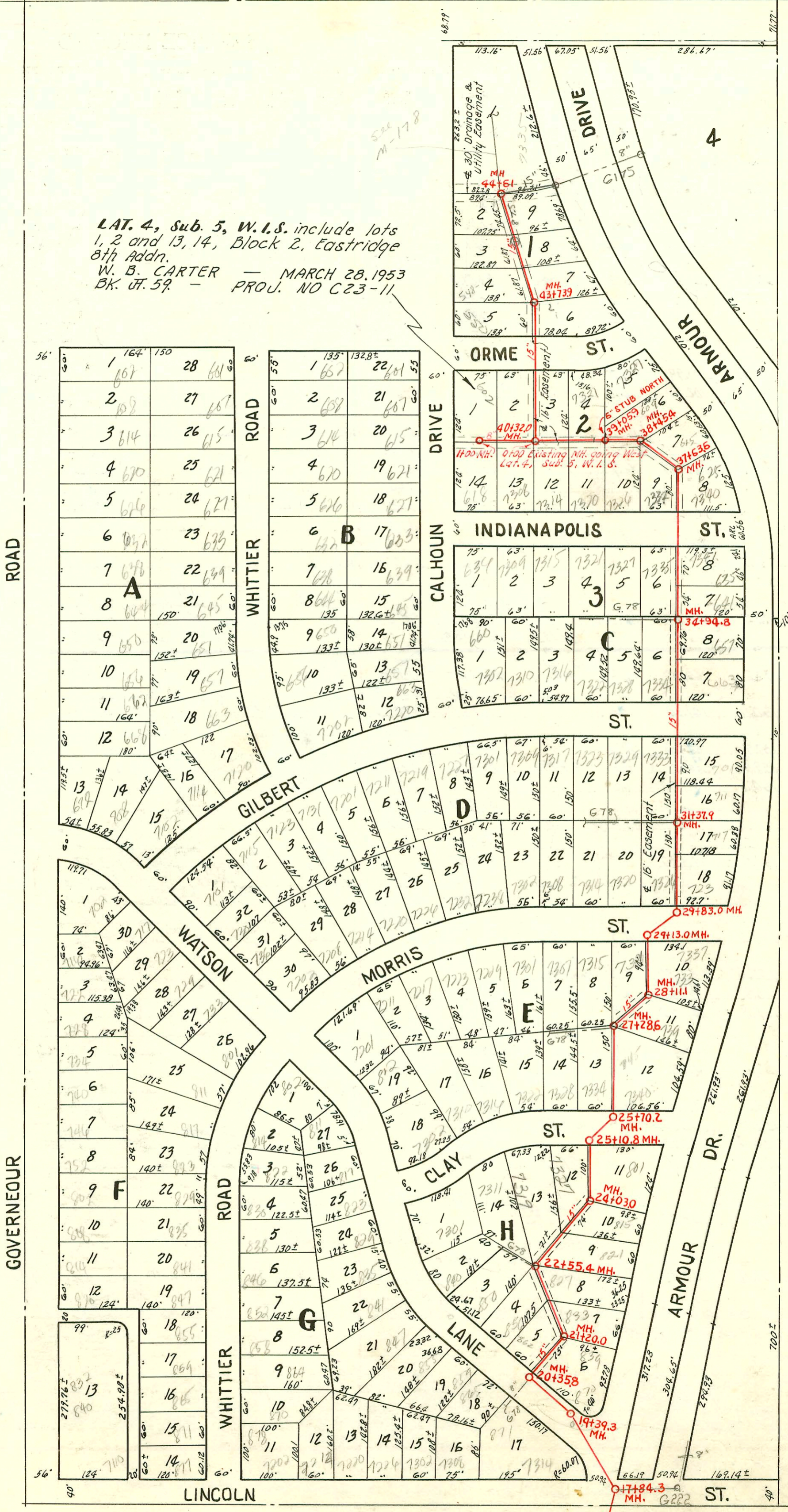


LAT. 4, Sub. 5, W.L.S. include lots 1, 2 and 13, 14, Block 2, Eastridge 8th Addn.  
 W. B. CARTER — MARCH 28, 1953  
 BK. OF 59 — PROJ. NO C23-11

1=150



NOTE: See title Block on page 81  
 1"=150'

CONSTRUCTION RECORD

SERVICE RECORD

STATION	ELEVATION		Depth	MANHOLE	4-INCH "Y" BRANCHES		No. of Permit		House Number		DATE OF PERMITS	
	Ground	Grade			North West	South East	North West	South East	North West	South East	North West	South East
17+84.3	137.8	131.75	6.1	17+84.3								
18+0	138.1	131.81	6.3									
19+0	139.6	132.21	7.4									
19+39.3	139.6	132.37	7.2									
20+0	140.3	132.51	7.7									
20+35.8	140.7	132.77	7.9									
21+0	140.3	133.01	7.3									
21+20.0	140.0	133.10	6.9									
21+44.2	140.2	133.41	6.8									
22+0	140.9	133.55	7.3									
22+12.3	140.9	133.81	7.1									
22+55.4	141.1	134.21	6.9									
23+0	141.1	134.24	6.9									
23+48.3	141.8	134.51	7.2									
24+0	141.9	134.67	7.2									
24+03.0	141.7	134.90	6.8									
24+25.4	141.9	135.01	6.9									
25+0	142.7	135.41	7.3									
25+10.8	143.2	135.54	7.7									
25+70.2	142.1	135.81	6.3									
25+95.2	141.9	135.86	6.0									
26+0	142.7	135.81	6.3									
27+0	143.2	135.81	6.3									
27+28.6	143.2	135.21	7.0									
27+52.8	143.3	135.27	7.0									
27+49.8	142.6	135.54	6.1									
28+0	142.1	135.81	6.3									
28+11.1	141.9	135.86	6.0									
28+35.5	143.2	135.21	7.0									
29+0	143.2	135.21	7.0									
29+13.0	143.3	135.27	7.0									
29+83.0	142.6	135.54	6.1									
30+0	142.8	135.61	6.2									
30+10.0	143.5	137.01	6.6									
31+0	144.1	137.16	6.9									
31+37.9	144.1	137.16	6.9									
31+52.6	145.2	137.41	7.8									
32+0	145.3	137.81	7.5									
32+21.5	145.6	138.21	7.4									
33+0	145.8	138.59	8.2									
33+72	146.8	138.61	8.2									
34+0	146.8	138.61	8.2									
34+50.6	148.8	139.01	9.8									
34+94.8	147.3	139.41	7.9									
35+0	146.8	139.66	7.1									
35+21.5	148.5	139.81	8.7									
35+77.3	149.0	139.97	9.0									
36+0	151.0	140.21	10.8									
37+0	151.0	140.22	10.8									
37+104.3	153.7	140.61	13.1									
37+53.5	154.1	140.75	13.4									
38+0	154.5	141.01	13.5									
38+45.4	154.6	141.41	13.2									
38+12.3	153.4	141.81	11.5									
38+09.3	153.4	141.81	11.5									
38+12.3	154.5	141.01	13.5									
38+45.4	154.6	141.41	13.2									
39+0	153.7	140.61	13.1									
39+22.4	154.1	140.75	13.4									
39+25.0	154.5	141.01	13.5									
39+91.7	154.6	141.41	13.2									
40+0	153.4	141.81	11.5									
40+32.0	153.4	141.81	11.5									
41+0	152.8	142.21	10.6									
41+64.3	151.3	142.45	8.9									
42+0	151.3	142.45	8.9									
42+42.7	151.3	142.45	8.9									
42+46.5	151.3	142.45	8.9									
43+0	151.3	142.45	8.9									
43+02.0	151.3	142.45	8.9									
43+05.6	151.3	142.45	8.9									
43+60.4	151.3	142.45	8.9									
43+64.3	151.3	142.45	8.9									
44+0	151.3	142.45	8.9									
44+25.0	151.3	142.45	8.9									
44+51.0	151.3	142.45	8.9									
44+82.4	151.3	142.45	8.9									
44+21.5	151.3	142.45	8.9									
44+79.4	151.3	142.45	8.9									
45+0	151.3	142.45	8.9									
45+24.5	151.3	142.45	8.9									
45+21.5	151.3	142.45	8.9									
45+82.4	151.3	142.45	8.9									
45+79.4	151.3	142.45	8.9									
46+0	151.3	142.45	8.9									
46+24.5	151.3	142.45	8.9									
46+21.5	151.3	142.45	8.9									
46+82.4	151.3	142.45	8.9									
46+79.4	151.3	142.45	8.9									
47+0	151.3	142.45	8.9									
47+24.5	151.3	142.45	8.9									
47+21.5	151.3	142.45	8.9									
47+82.4	151.3	142.45	8.9									
47+79.4	151.3	142.45	8.9									
48+0	151.3	142.45	8.9									
48+24.5	151.3	142.45	8.9									
48+21.5	151.3	142.45	8.9									
48+82.4	151.3	142.45	8.9									
48+79.4	151.3	142.45	8.9									
49+0	151.3	142.45	8.9									
49+24.5	151.3	142.45	8.9									
49+21.5	151.3	142.45	8.9									
49+82.4	151.3	142.45	8.9									
49+79.4	151.3	142.45	8.9									
50+0	151.3	142.45	8.9									
50+24.5	151.3	142.45	8.9									
50+21.5	151.3	142.45	8.9									
50+82.4	151.3	142.45	8.9									
50+79.4	151.3	142.45	8.9									
51+0	151.3	142.45	8.9									
51+24.5	151.3	142.45	8.9									
51+21.5	151.3	142.45	8.9									
51+82.4	151.3	142.45	8.9									
51+79.4	151.3	142.45	8.9									
52+0	151.3	142.45	8.9									
52+24.5	151.3	142.45	8.9									
52+21.5	151.3	142.45	8.9									
52+82.4	151.3	142.45	8.9									
52+79.4	151.3	142.45	8.9									
53+0	151.3	142.45	8.9									
53+24.5	151.3	142.45	8.9									
53+21.5	151.3	142.45	8.9									
53+82.4	151.3	142.45	8.9									
53+79.4	151.3	142.45	8.9									