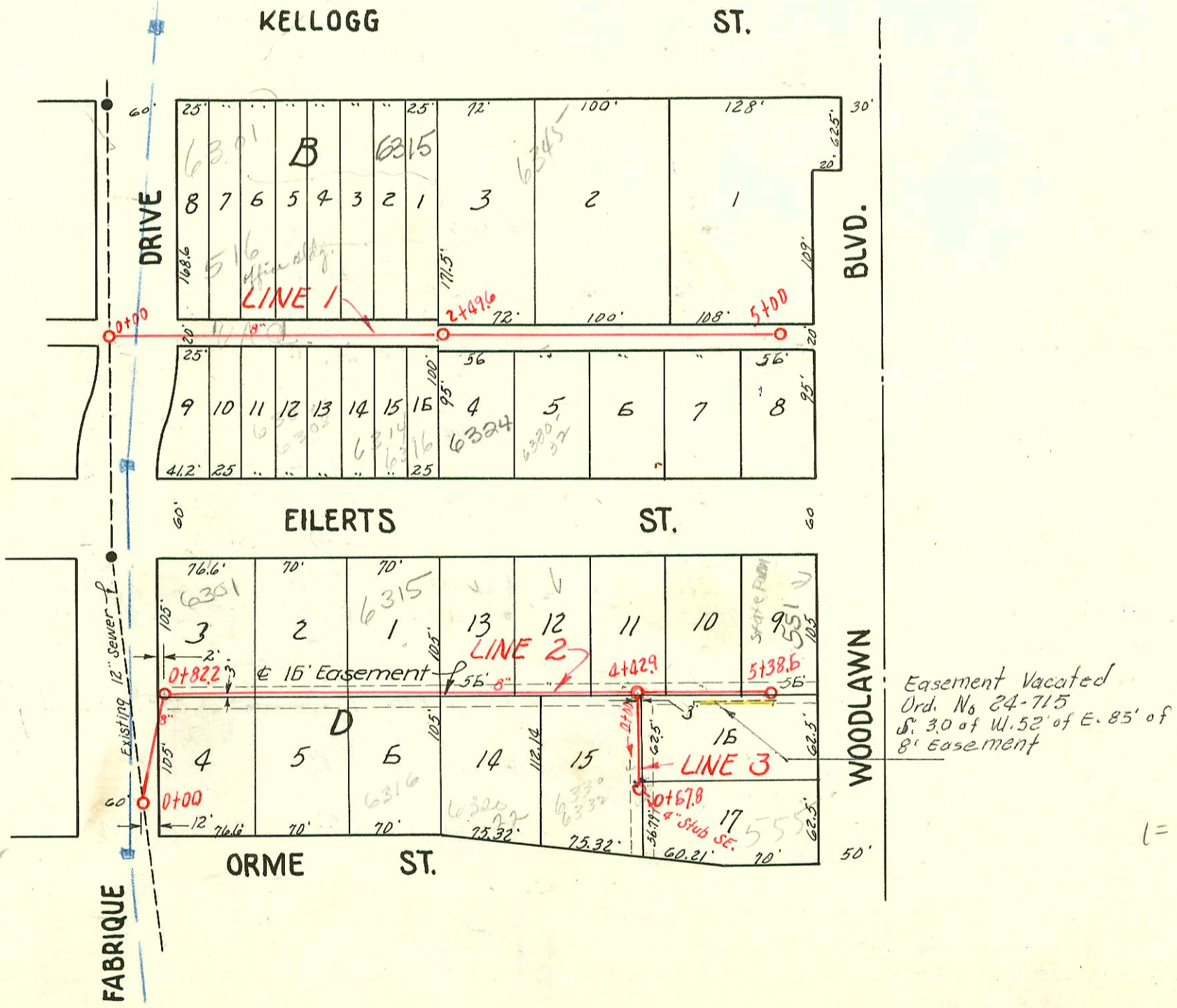


**LAT. 6, SUB. B, S.S. 21**  
 SEWERS INC. ~ CONT.  
 BK. NO. JT. 65, PROJ. NO. C22-48  
 Booked Aug. 12, 1952



**LAT. 9, SUB. 3, W. I. S.**  
 W. B. CARTER ~ CONT.  
 BK. # JT. 68, PROJ. NO. C22-54  
 Booked Aug. 25, 1952

CONSTRUCTION RECORD

SERVICE RECORD

STATION	ELEVATION		Depth	MANHOLE	4-INCH "Y" BRANCHES		No. of Permit		House Number		DATE OF PERMITS			
	Ground	Grade			North West	South East	North West	South East	North West	South East	North West	South East	North West	South East
0+0	108.7	101.69	7.0	0+0	0+53.1	0+50.1	12090	82249	13028	13053	12-31-59	2-5-69 9-27-70		
1+0	108.4	101.79	6.6		1+01.2	1+21.4	#5143		1308		5-8-53			
2+0	108.4	101.89	6.5		2+01.3	2+22.1	#17130		1316-18		12-1-69			
3+0	108.5	101.99	6.5		3+05.9	3+25.8	#6781	12828 B 1702	13245	13253	10-28-53	12-17-84 11-15-56 12-17-64		
4+0	108.8	102.09	6.7		4+22.1	4+19.1	#5146	13280	13308	13348	5-8-53	3-15-85 1-27-53		
5+0	109.5	102.19	7.3		5+02.2	5+21.6	#4403		1348		3-9-53			
6+0	108.6	102.29	6.3	6+13.1	6+23.0	6+00.0	#3721	C9711	13585	1351	11-12-70	10-11-52		
#1 0+0	159.7	146.80	12.9	New MH. 0+0	-NORTH- 0+70.0	-SOUTH- 0+73.0								
1+0	160.0	147.20	12.8		1+26.5	1+29.5	#2377		6309 E	6304 E	9-27-63	10-7-64		
2+0	157.9	147.60	10.3		2+27.0	2+30.3	#2377		6345 E	6324 R	9-3-52	7-16-53		
3+0	159.6	148.75	11.8	2+49.6	2+60.6	2+63.6	#3224		6330 R		7-16-53	2-16-53		
4+0	160.4	148.90	11.5		3+78.0	3+82.0	#2378		6345 E		9-3-52			
5+0	159.5	149.00	10.5	5+00	4+09.0	4+45.2	#2165		6345 E		8-14-52	8-28-52		
#2 0+0	155.6	147.30	8.3	New MH. 0+0	0+98.0	1+01.0	#6652		6307	6302	10-8-53	4-13-54		
1+0	158.4	147.48	10.9		1+72.8	+75.8	#6929		6315	6310	11-12-53	12-18-53		
2+0	159.5	147.60	11.9		2+44.9	2+47.9	#4158		6329		2-20-53			
3+0	159.1	147.70	11.4		3+17.2	+20.2	#3751		6335		1-13-53			
4+0	158.3	147.80	10.5		4+32.5	4+84.3	#4159		6349-51		2-20-53			
5+0	157.1	147.85	9.2	4+42.9	4+84.3	5+33.2	#4369		6349 SO		11-29-89			
6+0	156.4	147.90	8.5	5+38.5	5+33.2	5+28.6	#4368		551		4-25-53			
#3 0+0	157.1	148.10	9.0	0+0 = 4+42.9 in Line #2	-WEST- 0+61.2	-EAST- 0+46.0	#2166		553		8-14-52			
1+0	157.5	148.17	9.3	0+67.8	(4" stub SE)		#2379		555		9-3-52			

Reconnect SWR2002-01532-5/30/02 - 6324 E Ellerts - 64' E of MH 2+49.6 (1+85.6) 2 dir. CO, 4" SCH 40 PVC, 1/4" fall H22, 2H46, 1V22 Preco Saddle

C10231-505-521 S Woodlawn - Dennis Spr. 8-28-65 top (4+15)  
 C9450-6355 E Kellogg - al Henning 7-18-61 top in MH. 5+0  
 C5584-616 Fabrique - Do. Druffler 5-11-67 top (0+79) - sealed under old 6319 E of MH. 6315 R cell 1-16-66 from main  
 #82763-6302 Ellerts + 524 Fabrique - al Henning - 1-28-65 (0+96)  
 #4160-246-6341 Ellerts - 2-20-53 - Nichell + Henley  
 #599-246-9315 S Meridian - 4-9-54 - Roy E. Farrell - 5/0 30.5' N of SPL + 2' from RPL  
 5906 Conroy Tractor 1303 S Meridian 12-17-57 Grand Mc Coy  
 2944 Tap 6320 22 E. Olive St Rlyg 8-26-51 (31107)  
 332 Conroy 1305 S Meridian Grand Mc Coy 10-9-58 (1+16)  
 11982 Tap 6345 E Kellogg Ken Brodie 12-11-59 (3+56.6)  
 17085 Tap - 6330-32 E Olive - Smith Rlyg 5-22-63 (0+45.8)