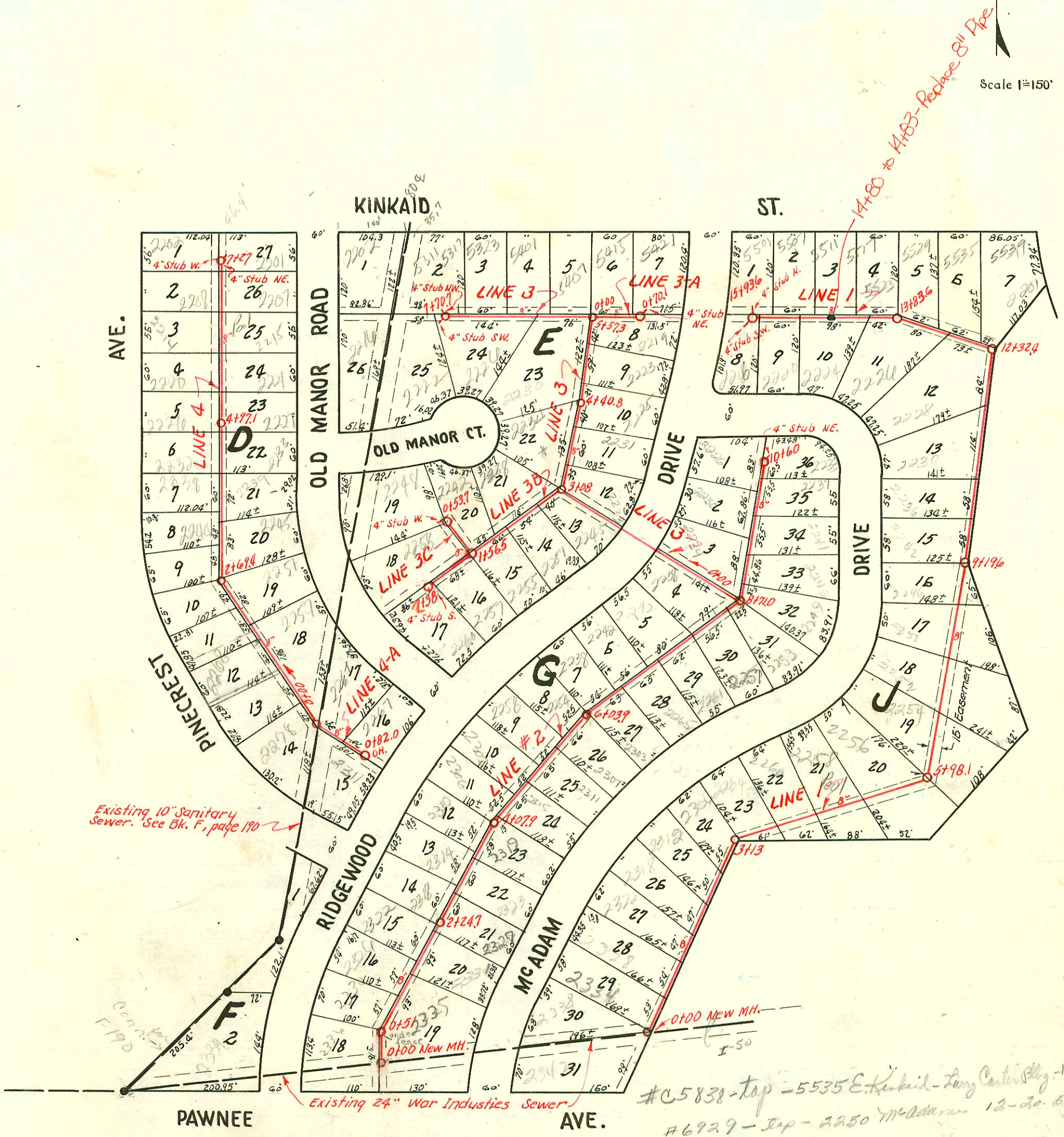


1995 SANITARY SEWER REHABILITATION PROGRAM - PHASE II
 PROJ. NO. N/A (621060)
 BUILT BY W.B. CARTER CONST. CO.
 BOOKED 2-20-96 FROM AS BUILTS

Scale 1"=150'



NOTE: Lots 1, 2, and 26, Block E, and Lot 2, Block F will be served from Existing 10" main. No charge for taps.

EASEMENTS
 Rear yard easements 8' wide
 Side 5'

- # 6101 - Tap - 2234 Old Manor Court - 8-10-53 - Reynolds P.Ly. Co. Inc.
- # 6100 - Tap - 2226 Old Manor Court - 8-10-53 - Reynolds P.Ly. Co. Inc.
- # 5331 - Tap - 2311 S. Ridgewood - 5-25-53 - Reynolds P.Ly. Co. Inc.
- # 2327 - Tap - 2307 Mc Adam - 8-28-52
- # 2350 - Tap - 2311 Mc Adam - 8-28-52
- # 6585 - Tap - 5517 E. Kinkaid - 9-28-53 - Hubbell + Hensley, Inc.
- # 6681 - Tap - 2202 Old Manor - 10-12-53 - Reggs P.Ly. Co.
- # 6687 - Tap - 2339 S. Ridgewood - 10-12-53 - Reggs P.Ly. Co.
- # 6723 - Tap - 5401 E. Kinkaid - 10-17-53 - Reynolds P.Ly. Co. Inc.
- # 7070 - Tap - 2342 Mc Adam - Reggs P.Ly. Co. - 11-30-53 (Tap approx 218' W of MH on 22" Main - later to sewer BK F-49)
- # 7077 - Tap - 2338 Mc Adam - Reggs P.Ly. Co. - 11-30-53
- # 5326 - Tap - 2261 S. Old Manor - 5-25-53 - Reynolds P.Ly. Co.
- # 5327 - Tap - 2267 S. Old Manor - 5-25-53 - Reynolds P.Ly. Co.
- # 5329 - Tap - 2272 S. Pinecrest - 5-25-53 - Reynolds P.Ly. Co.
- # 5330 - Tap - 2278 S. Pinecrest - 5-25-53 - Reynolds P.Ly. Co.

#C5838 - Tap - 5535 E. Kinkaid - Long Center P.Ly. Co. - 11-21-53 (13+10)
 #6929 - Tap - 2250 Mc Adam - 12-20-55 - Mc Harold P.Ly. Co.
 #7072 - Tap - 2224 Mc Adam - 11-30-53 } Reggs
 #7073 - Tap - 2226 Mc Adam - 11-30-53 } P.Ly. Co.
 #7074 - Tap - 2335 Mc Adam - 11-30-53 }
 #6720 - Tap - 5323 E. Kinkaid - 10-17-53 - Reynolds
 #48 - Tap - 2260 Mc ADAM DR. - 2-9-54 P.Ly. Co.
 #6183 Tap - 2252 Mc Adam Dr. - Reynolds P.Ly. Co. Inc. - 1-30-58
 Joe Mc Donnell

LAT. 14, SUB. I, W. I. S.
 UTILITIES CONT. INC. & CONT.
 BK. NO. JF 59, PROJ. NO. C22-46
 Booked Aug. 16, 1952

NOTE: Construction record for this project is shown on page 84 and 85.

see pg 85

