

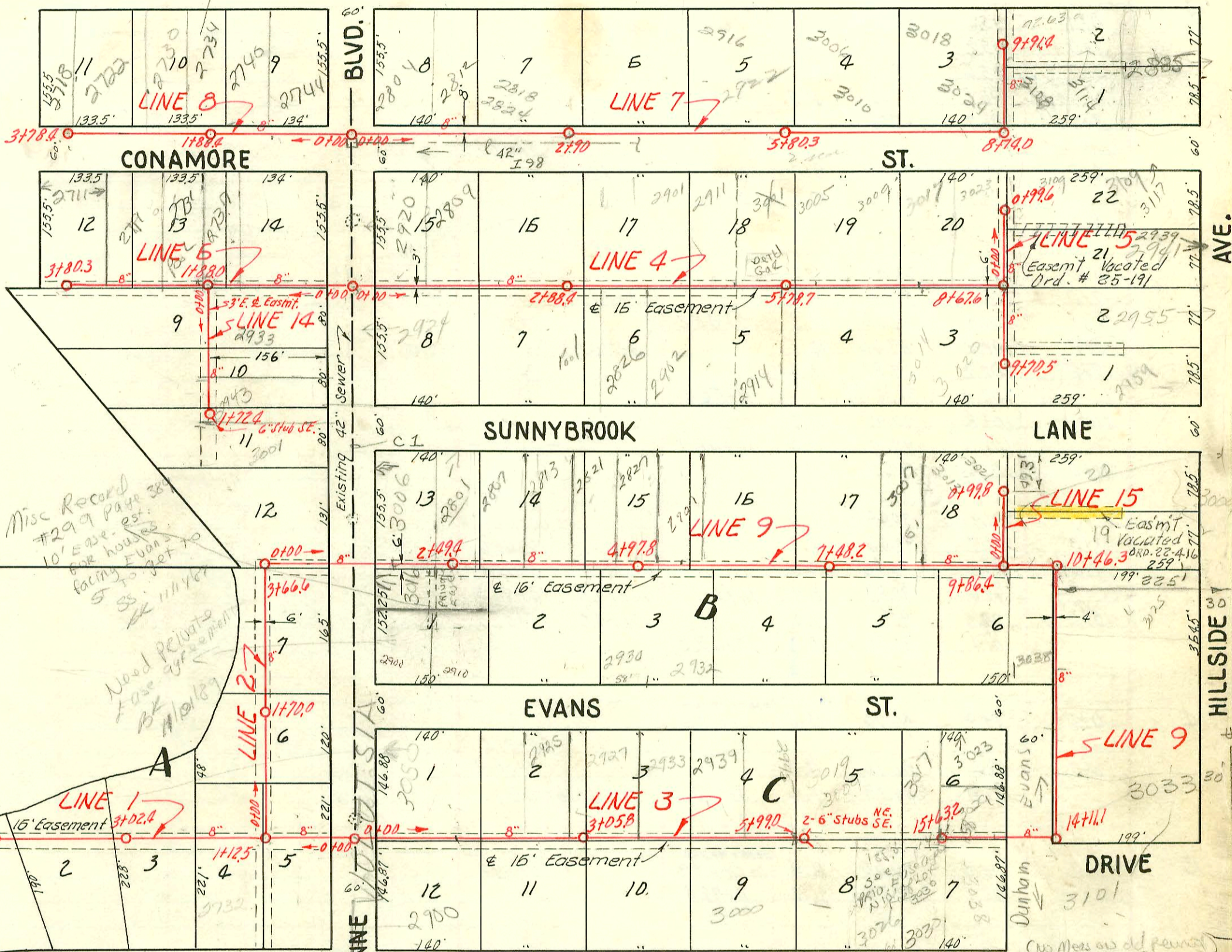
TRAP AREA

NOTE: 6 INCH "Y" BRANCHES

SCALE 1"=150'

Sewer Main to trap
w/ 1/2" line
(save 945)
Bk. 11-148

Get Legal Asp.
etc. Lot changes
on some of these
Bk



- 99-1232 # 545 - Top - 2925 Evans - 4-7-54 - Eugene Reynolds
 # 3989 - Top - 2911 Cheyenne - 2-2-53 - Eugene Reynolds
 # 4090 - Top - 3016 Cheyenne - 2-10-53 - Eugene Reynolds
 # 4078 - Top - 2726 Conamore - 2-9-53 - Eugene Reynolds
 98-1886 # 4076 - Top - 2734 Conamore - 2-18-53 - Eugene Reynolds
 # 4061 - Top - 2817 Conamore - 11-25-53 - Eugene Reynolds
 2001-0323 # 5868 - Top - 3038 Evans - 2-14-53 - Eugene Reynolds
 # 5058 - Top - 3020 Sunnybrook - 5-2-53 - Eugene Reynolds
 # 5056 - Top - 3008 Sunnybrook - 5-2-53 - Eugene Reynolds
 # 5053 - Top - 3002 Sunnybrook - 5-2-53 - Eugene Reynolds
 # 5053 - Top - 2914 Sunnybrook - 5-2-53 - Eugene Reynolds
 # 5051 - Top - 2902 Sunnybrook - 5-2-53 - Eugene Reynolds
 # 5049 - Top - 2820 Sunnybrook - 5-2-53 - Eugene Reynolds
 # 5048 - Top - 2814 Sunnybrook - 5-2-53 - Eugene Reynolds
 # 5046 - Top - 2802 Sunnybrook - 5-2-53 - Eugene Reynolds
 # 4807 - Top - 2813 Sunnybrook - 4-14-53 - Eugene Reynolds
 # 4809 - Top - 2829 Sunnybrook - 4-14-53 - Eugene Reynolds
 # 4812 - Top - 2913 Sunnybrook - 4-14-53 - Eugene Reynolds
 # 4814 - Top - 3001 Sunnybrook - 4-14-53 - Eugene Reynolds
 2003-01809 Redde Root R 210103 4" PVC, New house trap, 2H22 main
 # 4391 - Top - 2731 Conamore - 3-9-53 - Eugene Reynolds
 98-9727 # 4392 - Top - 2737 Conamore - 3-9-53 - Eugene Reynolds
 # 4393 - Top - 2927 Cheyenne - 3-9-53 - Eugene Reynolds
 # 4429 - Top - 2718 Conamore - 3-12-53 - Eugene Reynolds
 2000-02733 # 4430 - Top - 2722 Conamore - 3-12-53 - Eugene Reynolds
 # 4768 - Top - 2812 Conamore - 4-9-53 - Eugene Reynolds
 96-16256 # 4810 - Top - 2901 Sunnybrook - 4-14-53 - Eugene Reynolds
 # 5692 - Top - 2939 Evans - 7-2-53 - Eugene Reynolds
 # 5693 - Top - 2949 Evans - 7-2-53 - Eugene Reynolds
 # 598 - Top - 2911 Conamore - 4-12-54 - Eugene Reynolds
 # 4767 - Top - 2804 Conamore - 4-9-53 - Eugene Reynolds
 # 4390 - Top - 2725 Conamore - 3-9-53 - Eugene Reynolds
 # 1274 - Top - 2823 Conamore - 6-23-54 - Eugene Reynolds
 # 1304 - Top - 2959 Hillside - 6-24-54 - Eugene Reynolds
 # 2982 - Top - 2711 Conamore - 6-24-54 - Eugene Reynolds
 2000-02541 9604 Top 3117 Conamore - 3-25-59 - Eugene Reynolds
 # C-23110 Top 2930 E. Evans - 4-13-52 - Eugene Reynolds
 # 5608 - Top - 2945 Evans - 4-13-52 - Eugene Reynolds
 # 15140 - Top - 2924 S. Hillside - 12-4-53 - Eugene Reynolds
 # 26150 - Top - 2914 E. Sunnybrook - 12-4-53 - Eugene Reynolds
 Rep: 30' 1/2" W.C. 1V22 Ferro to CI @ house, Ferro to 6" clay
 NOTE: Construction Record for this project is shown on pages 86 & 87.

TRAP AREA 6" wyes

LAT. 5, S. S. 12
W. B. CARTER - CONT.
BK. J. 66, PROJ. NO. C22-49
Booked Aug. 26, 1952
Good Pipe - 4" x 4" - Repl all but lower 7' of sewer

CONSTRUCTION RECORD

SERVICE RECORD

LINE NO.	STATION	ELEVATION		Depth	MANHOLE	6 INCH "Y" BRANCHES		No. of Permit		House Number		DATE OF PERMITS	
		Ground	Grade			North	South	North West	South East	North West	South East	North West	South East
1	0+0	95.9	85.67	10.2	New MH. 0+00		0+82.7	#5719		2814		5-7-53	
	1+0	94.3	85.77	9.5				#5634		2732 R		8-8-54	
	2+0	94.2	85.80	8.4	1+12.5		1+48.0	#3720		2724 R		6-22-53	
	3+0	92.8	85.87	6.9			2+35.9			2724 R		1-10-53	
	4+0	91.9	85.97	5.0	3+02.4		3+66.1						
2	0+0	94.2	86.00	8.2	0+00 = 1+12.5 in Line 1		-EAST- 0+32.8	#6464		3031		9-17-53	
	1+0	93.7	86.10	7.6			1+29.7	#4663		3025		3-27-53	
	2+0	93.0	86.17	6.8	1+70.0								
	3+0	92.7	86.20	6.5			2+13.9						
	4+0	92.4	86.30	7.1			+86.0						
3	0+0	95.9	85.67	10.2	0+00 = MH. 0+00 in Line 1	-NORTH-	-SOUTH-	95-2197		3050 S. R		2-17-95	
	1+0	95.6	86.07	9.5		4" S.D.R. 35	1+05.7	#2533		2950		9-15-52	
	2+0	96.7	86.47	10.2			2+04.4	#2483		2923		9-11-52	
	3+0	97.6	86.87	10.7			2+93.7	#544		2914		4-7-54	
	4+0	97.7	86.90	10.8	3+05.8		3+89.1	#2553		2914		9-16-52	
4	0+0	95.9	85.67	10.2	0+00 New MH.		0+55.8	#4664		2928		9-2-52	
	1+0	96.4	86.07	10.3			1+96.3	#5049		2928		5-2-53	
	2+0	97.7	86.47	11.2			2+88.4	#6340		2928		5-2-53	
	3+0	98.5	86.83	9.7			3+35.8	#2834		2901		10-11-52	
	4+0	98.8	88.81	9.9			4+17.8	#5052		2908		5-2-53	
5	0+0	102.8	92.17	10.6	0+00 = 8+67.6 in Line 4		0+28.9	#3613		2937		5-23-56	
	1+0	103.0	92.55	10.5			+89.2	#6675		3109		4-16-58	
	2+0	94.2	85.86	8.3	1+88.0		0+96.5	#2835		2811		7-13-54	
	3+0	94.4	85.87	8.5			3+19.8	#5054		2711 R		11-20-00	
	4+0	94.3	86.05	8.3	3+80.3		3+79.8	#5057		2818		9-25-93	
6	0+0	95.9	85.67	10.2	0+00 = MH. 0+00 in Line 4	-NORTH-	-SOUTH-	#4428		2719		3-12-53	
	1+0	94.5	85.77	8.7			0+57.1	#2004		2811		7-13-54	
	2+0	94.2	85.86	8.3	1+88.0		0+96.5	#01914		2811		7-13-54	
	3+0	94.4	85.87	8.5			3+19.8	#2000		2711 R		11-20-00	
	4+0	94.1	85.97	8.1			3+79.8	#02541		2804		9-25-93	
7	0+0	96.5	85.67	10.8	0+00 New MH.		0+55.5	#9324807		2818		11-14-50	
	1+0	97.1	86.07	11.0			1+96.0	#3220		2818		11-14-50	
	2+0	97.3	86.47	10.8			2+90			2902		11-11-52	
	3+0	97.7	86.83	10.9			3+54.9	#3192		2902		11-11-52	
	4+0	98.8	89.27	9.5			4+77.0			2902		11-11-52	

NOTE: This project continues on page 87

#2747 - Dup - 2916 Conamore - 10-2-52 - Eugene Reynolds (R 419.3)

#2748 - Dup - 2824 Conamore - 10-2-52 - Eugene Reynolds - APP NO LEAKS - 4" SCH 40 - 6X4 FERROD 3' from main - Ferro to ET at house - 1" W/IN CO. TRAP 1" WEST

#3152 - Dup - 2809 Conamore - 11-10-52 - gaut Durham

#3221 - Dup - 2922 Conamore - 11-14-52 - Eugene Reynolds (4" SCH 40) top 110 W

#3223 - Dup - 3017 Conamore - 11-14-52 - Eugene Reynolds (7+57.6) Repair 10-1-68

#3209 - Dup - 2740 Conamore - 1-19-53 - Eugene Reynolds

#3810 - Dup - 3018 Conamore - 1-19-53 - Eugene Reynolds

#3811 - Dup - 3024 Conamore - 1-19-53 - Eugene Reynolds

#3222 - Dup - 3023 Conamore - 11-14-52 - Eugene Reynolds (8+35.5 upon 9-20-92)

#571 - Dup - 2927 Conamore - 6-4-53 - Eugene Reynolds (4" PVC city W/ repair 48.6' E of 245.80+57.0) 1495 HUNTER NEW TRAP 5" R. ed. W