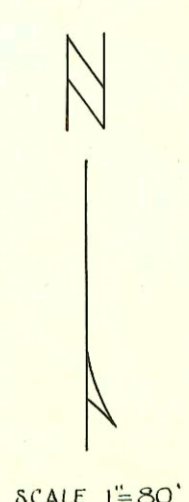
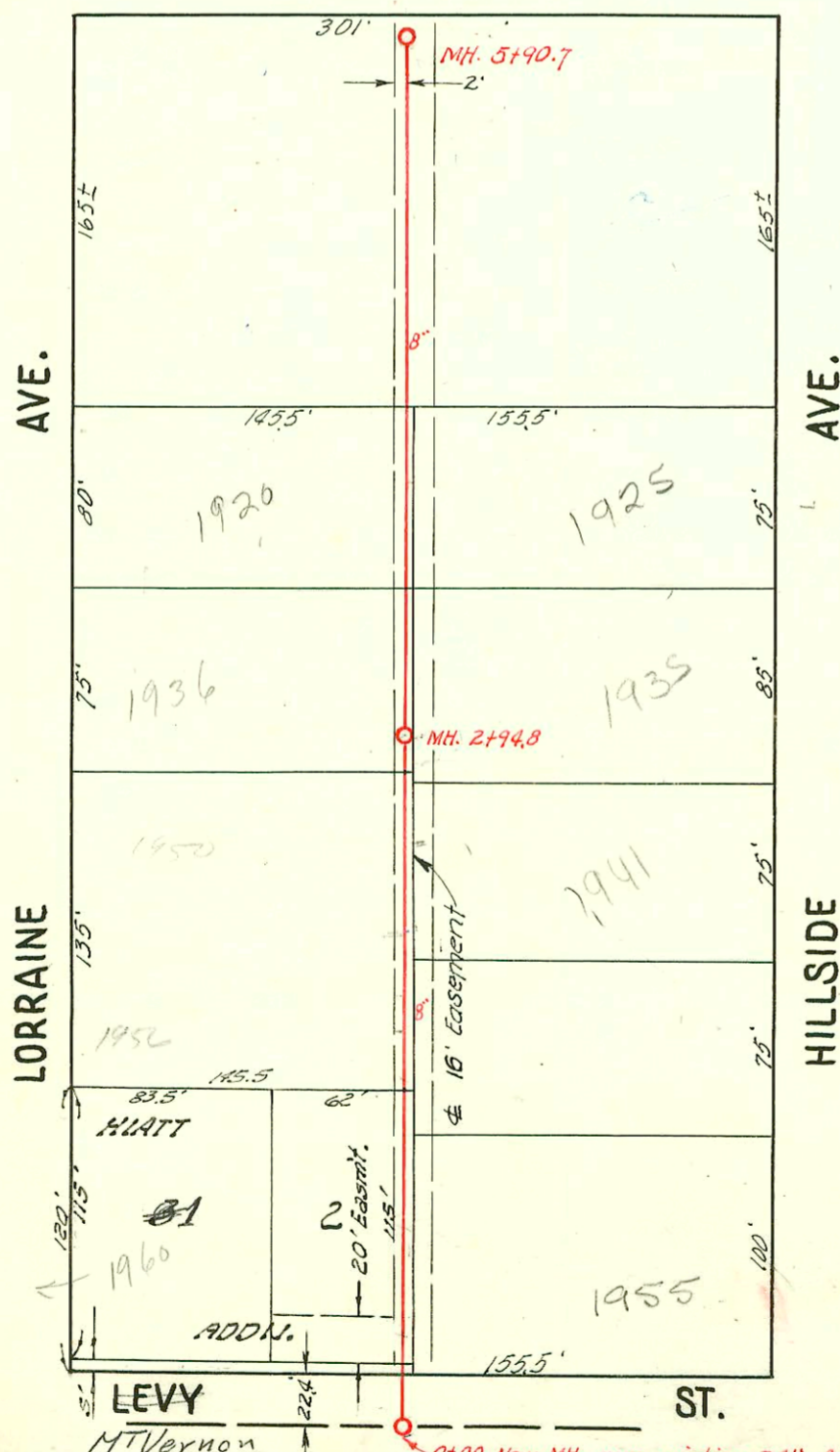


2003-00283-2/3/03 - 3017 E Evans - 4" 40 PVC - 4" MH STUB NW from DEMH (5+63.2 1/4" Fall - Shallow -  
Replaced entire line - 4" TWIN CO @ house, 2V45, 1H 22



Tap #B3766-1960 S. Lorraine - Reynolds, City, 7-8-65 (0+45.6)  
 2001-01192-5/15/01-1955 S Hillside - Aaah No Leaks - 4" SCH 40 - 2 Fernco to CF @ house, 1 Fernco to ABS @ house, 1 Fernco to clay, 2-wyes, 3 TWIN CO, 3 Kickouts, 2 H. 22, 3V45, 3 H45  
 2000-00929 4/14/00 1935 Hillside - Wichita EXC - 29.8' N of MH 2194.8 (3+24.8) 3 TWIN CO, 2 WYES, 1 H45, 3 KICKOUTS

**LAT. 17, D.C.S. 2, S.S. 12**  
 UTILITY CONT. INC.  
 BK. NO. JT. 61, PROJ. NO. C22-39  
 Booked Sept. 30, 1952

4" PVC to replace all but under 6 wye approx 15' N 1/2" (1574)

CONSTRUCTION RECORD

SERVICE RECORD

LINE NO.

LINE NO.	STATION	ELEVATION		Depth	MANHOLE	6 INCH "Y" BRANCHES		No. of Permit		House Number		DATE OF PERMITS	
		Ground	Grade			North West	South East	North West	South East	North West	South East	North West	South East
#7 Continued from page #86.	9+0	102.6	91.14 out	11.5	8+74.0		8+99.2						
		103.0	92.19 in	10.4		9+44.8	9+39.0	275214		3025		11-6-79	
		103.5	92.27	10.7			9+80.5	13821		3025		3-11-54	
8.	0+0	96.5	85.67	10.8	0+00 = MH. 0+00 in Line 7		0+52.0	#3808		2744		1-19-53	
	1+0	94.5	85.77	8.7			1+81.5						
		93.3	85.86	7.4		1+88.4							
	2+0	93.3	85.87	7.4									
	3+0	93.0	85.97	7.0			3+15.1						
9.	0+0	95.2	86.56	8.6	0+00 = MH. 3+666 in Line 2		0+10.1	21981	2032251	3006 & R	3016	12/11/56	2-5-51
	1+0	95.2	86.96	8.2		1+75.1	1+72.1	#4773	#4090	Voluntar		4-9-53	2-10-53
	2+0	95.6	87.36	8.2									
	3+0	96.1	87.56	8.5	2+49.4								
		96.7	87.76	8.9	3+09.7								
	4+0	97.9	88.16	9.7		4+48.6	3+49.5		500				4-12-56
		99.1	88.56	10.5	4+97.8		4+71.2						
	5+0						5+29.2		6090		2930	EVANS	3-11-71
							5+89.4		#4811		2932	Evans	2-4-58
	6+0	100.2	88.96	11.2			6+80.3		#6090		3016		8-8-53
	7+0	101.3	89.36	11.9			7+25.5		#4813	154200	3021	Evans	4-14-53
		101.9	89.56	12.3	7+48.2		7+89.3						3-15-74
	8+0	102.2	89.66	12.5		8+70.1			9629087		3007 E R	SUNNYSIDE	12-17-96
	9+0	102.2	89.82	12.4			9+51.9		#5867		3032	Evans	7-21-53
		102.4	89.96 out	12.4	9+86.4								
10+0	101.8	90.06	11.7		10+26.3								
	101.6	90.17	11.4	10+46.3									
11+0	101.4	90.26	11.1			-EAST-	11+17.0	95-11227		3025	Hillside	5-26-95	
							+80.4	#2809		3039	Hillside	10-8-52	
12+0	101.9	90.46	11.4			12+46.4		15483	add	3033	Hillside	4-2-64	
13+0	101.7	90.66	11.0			13+46.4		#4123		3035	Hillside	1-21-66	
14+0	99.5	90.86	8.6			-NORTH-	-SOUTH-	(10")	C19909	3035	Hillside	4-13-55	
	99.6	90.88	8.7	14+11.1		14+93.3	14+96.3	#5470	3023	3035	Hillside	7-1-70	
15+0	100.5	91.11	9.4		15+54.0	15+57.0		#5480	#5470	3023	Evans	6-4-53	
	101.4	91.21	10.2	15+63.2				#5480	#5470	3023	Evans	6-29-53	
								#5480	#5470	3023	Evans	10-5-67	
14	0+0	94.3	86.06	8.2	0+00 = 1+88 in Line #6		0+31.4	#16923		2953	Hillside	11-4-52	
	1+0	93.4	86.16	7.2			1+00.8	#16923		2939	Hillside	11-25-53	
		93.6	86.23	7.4	1+72.4		(6" Stub SE.)		#7059		3001 R	Hillside	10-7-54
15	0+0	102.0	90.60	11.4	0+00 = 9+854 in Line #9		0+89.2		B4693		3009 R	Hillside	12-1-65
		102.1	90.94	11.2	0+99.8								
LAT. 17, D.C.S. 2, S. S. NO. 12	0+0	100.8	94.02	6.8	0+00 New MH.	4" West	4" East						
	1+0	100.1	94.12	6.0		1+28.0	1+62	13121	#2841	1956	Hillside	3-1-95	
	2+0	100.5	94.22	6.3		2+10.6	2+49.9	#2882	#2840	1941	Hillside	10-20-52	
		100.8	94.32	6.5	2+94.8								10-11-52
	3+0	100.8	94.33	6.5		3+01.5	3+71.0	#3124	2000-00929	1936	Hillside	11-6-52	
						3+14.0	3+98.0		#2881		1935	Hillside	4-14-00
						3+71.0	3+88.0		2622		1925	Hillside	10-20-52
						3+88.0	4+62.0						8-28-70
	4+0	101.1	94.43	6.7		4+59.0	4+62.0	#3729		1912	Hillside	3-28-55	
	5+0	101.4	94.53	6.9		5+60.5	5+33.0						

Measurement

LAT. 17, D.C.S. 2, S. S. NO. 12

#26021 Hillside 11-20-52 Joe McDonald #6498-1st-3021 Sunnyside 9-21-53  
 #330 Hillside 1996  
 #4091 Dup 2730 Conamore 2-9-53 Eugene Reynolds #5949 Dup - 1920 S Lorraine 7-28-53 (109' W of MH)  
 #4092 Dup 2900 Evans 2-10-53 Eugene Reynolds #5487 Dup 3029 Evans 6-6-53 Reynolds Pkty. Co.  
 #4092 Dup 2910 Evans 2-10-53 Eugene Reynolds #4880 Dup 3106 Mt Vernon 4-17-53 Joe McDonald  
 #4769 Dup 2801 R Sunnyside 4-9-53 Eugene Reynolds #4339 Dup 2943 S Volterra 1-10-54 Reynolds Pkty. Co.  
 #5480 Dup 3017 Evans 6-5-53 Eugene Reynolds #2916 Dup 1902 S Lorraine 10-21-52 Reynolds Pkty. Co.  
 #6496 Dup 3009 Evans 9-21-53  
 #7068 Dup 3013 Evans 9-21-53  
 see next pg - top  
 R 7068