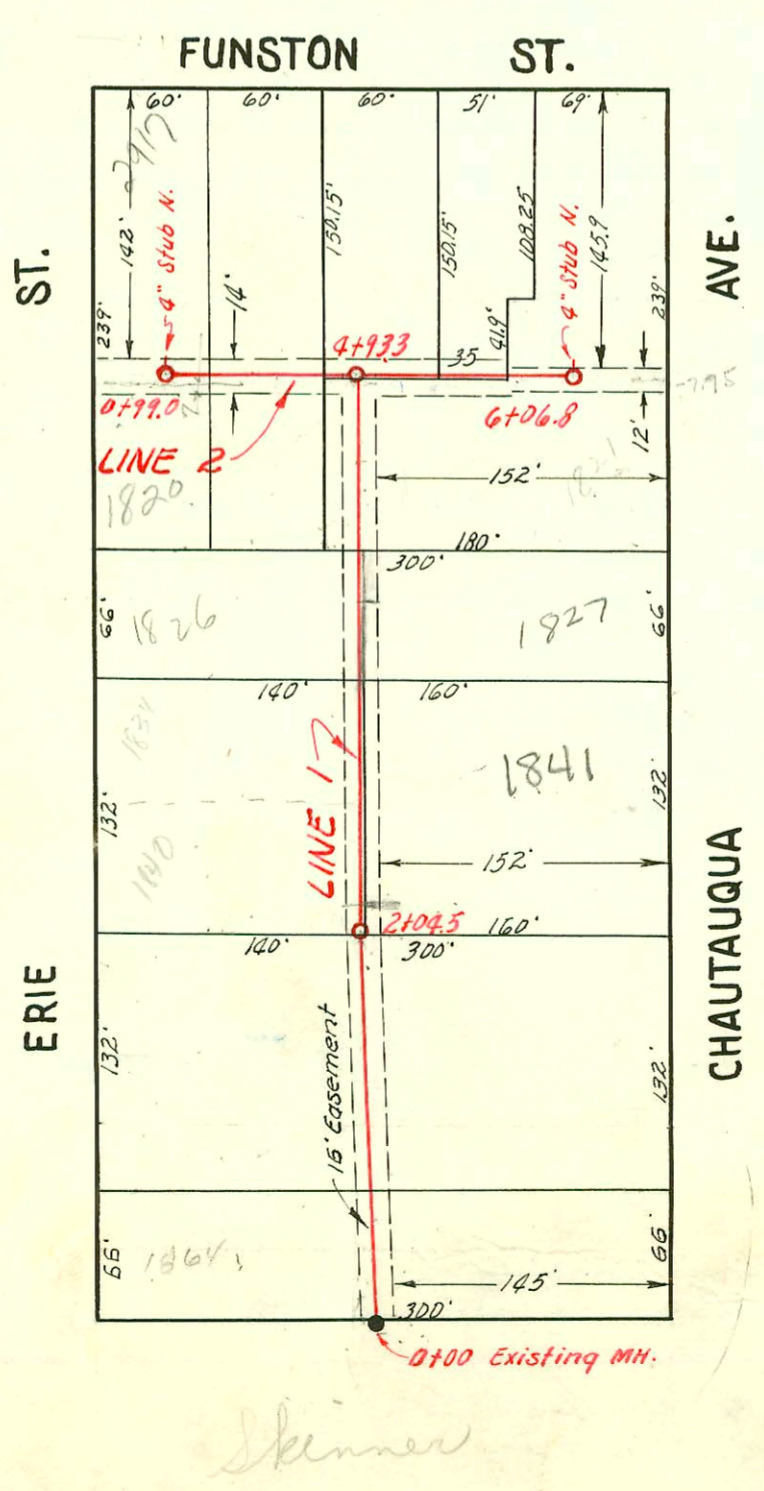


LAT. 12, D.C.S. 2, S. S. 12
 UTILITY CONTR. INC.
 BK. JT. 58, PROJ. NO. C22-27
 Booked Sept. 9, 1952



LAT. 21, D.C.S. 2, S. S. 12
 UTILITY CONTR. INC.
 BK. JT. 58, PROJ. NO. C22-44
 Booked Sept. 9, 1952

CONSTRUCTION RECORD

SERVICE RECORD

STATION	ELEVATION		Depth	MANHOLE	4-INCH "Y" BRANCHES		No. of Permit		House Number		DATE OF PERMITS	
	Ground	Grade			North West	South East	North West	South East	North West	South East	North West	South East
Line #1 0+0	100.5	93.50	7.0	0+0								
	100.3	93.52 out 93.72 in	6.8 6.6	0+18.6				#2482	1957 S. Chautaugue			9-11-52
1+0	100.2	93.80	6.4					#4724	1945 S. Chautaugue			4-6-53
					1+33.6	+30.6			1945 S. Chautaugue			9-10-52
2+0	100.2	93.90	6.3									
	100.4	93.91 out 94.14 in	6.5 6.3	2+11.4	(4" Stub NE)							
	100.3	94.34 out 94.34 in	6.2 6.0	2+44.5				#2481	1931 S. Chautaugue			9-11-52
3+0	100.3	94.40	5.9									
					3+05.3							
					+38.5	3+35.5		#3522 #2558	1932 S. Erie	1927 S. Chautaugue	12-15-52	9-17-52
4+0	100.2	94.50	5.7					#4725 #1391	1927 S. Erie	1923 S. Chautaugue	3-30-54	7-2-54
	101.1	94.57	6.5	4+57.2								
					4+85.6	4+82.6		#1761 #2659	1918 S. Erie	1915 S. Chautaugue	8-13-54	9-25-52
5+0	100.0	94.60	5.4					#1080 #2885	1906 S. Erie	1901 S. Chautaugue	6-1-54	9-13-52
6+0	100.9	94.70	6.2									
					6+20.1			3857	1902 S. Erie			2-18-57
	101.5	94.78	6.7	6+83.2								
Line #2 0+0	100.3	94.14	6.2	0+0 = 2+44.5 in Line #1		Y South		#3098	2902 S. Erie			2-1-55
						0+47.0		#4756	2902 S. Erie			9-11-52
	100.4	94.24	6.2	0+99.3		+86.0		#2480	1902 S. Erie			
Line #1 0+0	101.5	94.78	6.7	0+0 Existing MH.	WEST	EAST						
					0+15.5			#3097	1864 S. Erie			2-1-55
						0+45.7		2466	1863 S. Erie			9-10-52
1+0	102.7	94.88	7.8		0+87.2	0+90.2		#2295 #3594	1858 S. Erie	1855 S. Chautaugue	10-19-54	12-22-52
2+0	103.1	94.98	8.1		1+50.2			#3140	1850 S. Erie			1-10-55
	103.5	94.99	8.5	2+04.5	2+25.5	2+22.5		15582 #2469	1840 S. Erie	1841 S. Chautaugue	5-7-62	9-10-52
					+86.9							
3+0	104.1	95.08	9.0		3+80.7	3+77.7						
4+0	104.6	95.18	9.4		4+23.5							
	105.2	95.27 out 95.47 in	9.9 9.7	4+93.3	North	South		#2617	2921 S. Erie			9-22-52
5+0	105.2	95.48	9.7		5+05.3			#2618	2925 S. Erie			9-22-52
					+64.0							
						5+95.7						
6+0	105.0	95.58	9.4									
	104.9	95.59	9.3	6+06.8	(4" Stub North)			#2619	2929 S. Erie			9-22-52
Line #2 0+0	105.2	95.47	9.7	0+0 = 4+93.3 in Line 1	0+34.5			#2661	2919 S. Erie			9-25-52
					+43.2			#3102	2917 S. Erie			11-3-52
	104.3	95.57	8.7	0+99.0	(4" Stub No.)							

#2620-1827 S. Chautaugue - Top Jack Durham - 9-22-52
 #8185 - Top 1820 S. Erie - Reynolds Bldg. 9-30-58, (0+57)
 12953 - Long 1834 S. Erie - Vern Kippoldt 1-16-60 (2+84.5)
 14947 - Top - 1821 S. Chautaugue - Reynolds Bldg - 12-6-61 (5+80.8) - Sealed off PB-2197 - 10-26-64 (see new top)
 16075 - Top - 1826 S. Erie - Adams Bldg - 8-27-62 (3+52.5)
 B2196 - Top - 1821 S. Chautaugue - Reynolds Bldg - 10-27-64 (5+37.7)