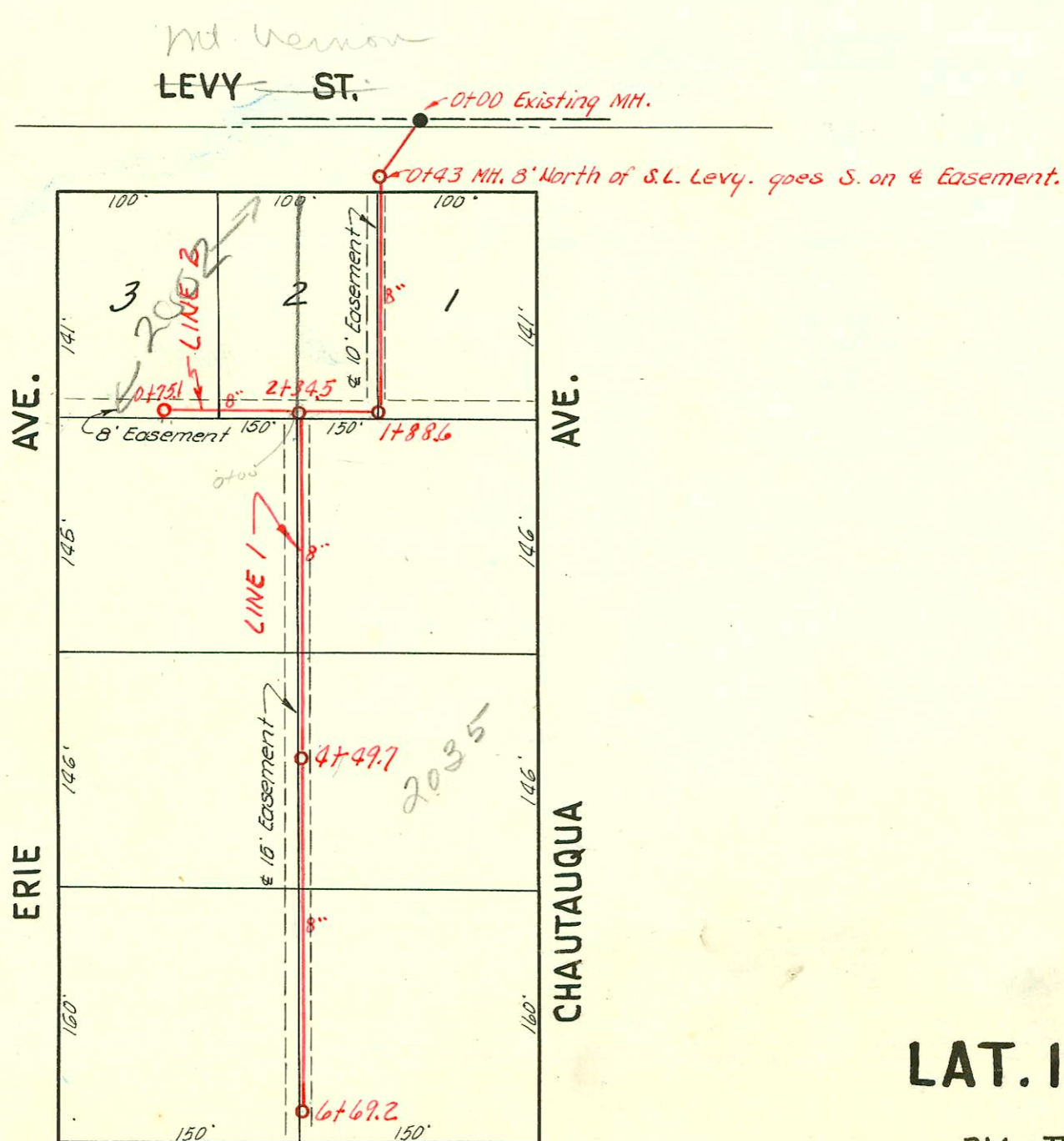


LAT. 16, D.C.S. 2, S.S. 12
 W. B. CARTER
 BK. JT. 58, PROJ. NO. C 22-38
 Booked Sept. 13, 1952



LAT. 15, D.C.S. 2, S.S. 12
 W. B. CARTER
 BK. JT. 64, PROJ. NO. C 22-37
 Booked Sept. 13, 1952

CONSTRUCTION RECORD						SERVICE RECORD						
STATION	ELEVATION		Depth	MANHOLE	4-INCH "Y" BRANCHES		No. of Permit		House Number		DATE OF PERMITS	
	Ground	Grade			North West	South East	North West	South East	North West	South East	North West	South East
0+0	101.0	93.72	7.3	New MH. 0+0	0+46.8 +92.0	0+43.8	#2556 #2557		3030 1952 1952		9-17-52 9-17-52	
1+0	100.5	93.82	6.7		1+07.2 +22.9	1+07.2						
2+0	100.6	93.92	6.7		1+98.3 +95.3	2+76.5	#3248 #5992 98-15485 #2507		1924 S. 1945 E. Chautaugue 1935 E. 1935 W. 1930 S. Chautaugue		1-26-55 7-29-53 8-20-52 7-19-52	
	100.6	94.02	6.6	2+89.5	2+82.4		#2487		1924 S. Chautaugue		9-12-52	
3+0	100.4	94.03	6.4		3+85.8		#2679		1924 S. Chautaugue		9-26-52	
4+0	100.8	94.13	6.7		3+94.0		#2872	#2591	1916 S. Chautaugue		9-19-52	
5+0	101.0	94.23	6.8		4+30.5 +512.4	4+30.5	#2580 #2581 #2703		1915 S. Chautaugue		10-17-52 12-21-55	
	101.1	94.32	6.8	5+84.1	5+55.8		#2560		1915 S. Chautaugue		9-17-52	
					West	East						
Line #1 0+0	100.3	93.52	6.8	Existing MH. 0+0	0+85.4	0+82.4	#2573		2007 Chautaugue		9-17-52	
	100.4	93.56	6.8	0+43.0	0+85.4	0+82.4	#2574		2007 Chautaugue		9-17-52	
1+0	100.4	93.62 out	6.8		1+88.6	North						
	100.1	93.81 in	6.4		1+88.6	North						
2+0	100.1	93.72 out	6.4		2+07.0	West						
	100.0	93.86 out	6.1		2+34.5	West						
		93.75 in	6.0		2+34.5	West						
3+0	99.9	94.02	5.9		2+78.0	East	#2588	#2376	2020 E. 2007 Chautaugue		9-19-52	11-1-59
4+0	99.8	94.12	5.7		4+35.2	4+33.2	#2660	9017	2036 E. 2035 S. Chautaugue		9-25-52	1-13-59
	99.6	94.17	5.4	4+49.7	4+35.2	4+33.2						
5+0	99.5	94.22	5.3		5+96.7	5+93.7	#5252	#4794	2046 E. 2045 S. Chautaugue		5-19-53	4-13-53
6+0	98.9	94.32	4.6		6+69.2							
	98.5	94.42	4.1		6+69.2							
Line #2 0+0	100.1	93.86	6.2	0+0 = 2+34.5 in Line #1	0+66.7	North	#2230		2002 E. Chautaugue		10-6-54	
	98.8	93.94	4.9	0+75.1	0+66.7	North						

#6375 Top 3010 Mt. Vernon 9-13-55 R. K. Ray
 #5226 Top 3016 E. Mt. Vernon 8-29-57 R. K. Ray
 #3562 Top 2031 S. Chautaugue 11-18-60 Building Bldg. (4+26.7)