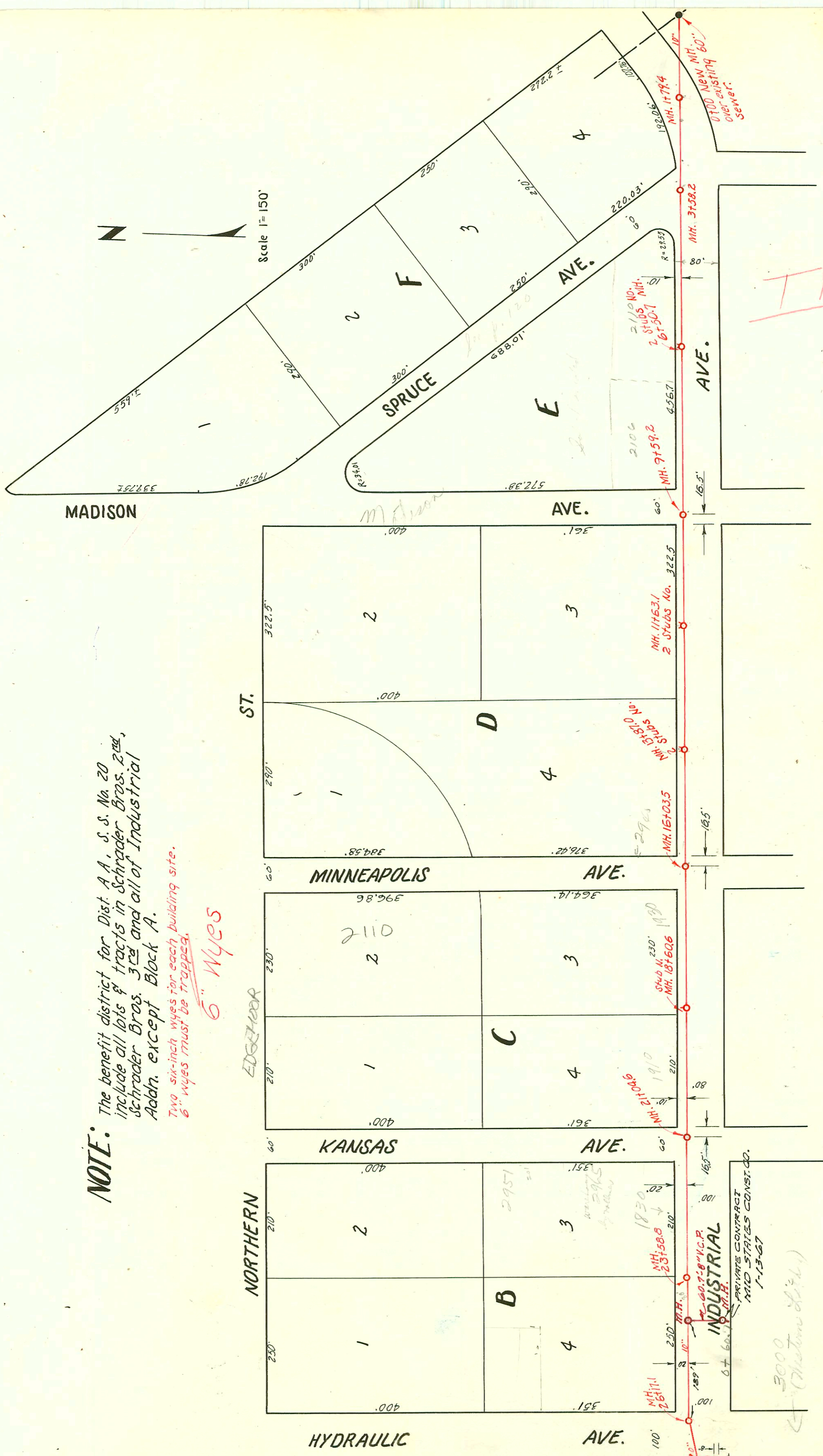


NOTE:

The benefit district for Dist. A A, S. S. No. 20 include all lots & tracts in Schrader Bros. 2nd, Schrader Bros. 3rd and all of Industrial Awn. except Block A.

Two six-inch wyes for each building site. 6" wyes must be trapped.

6" Wyes



2000-01972-2048 S Edgemoor - 4" SCH40, house drain ext - 1 Twinco 1-Ferroc to clay tile 1-2 Nohub 1-TO CAST IRON

3001 S Madison #58476 exp Dan Coleman

Cross hatched portion of sewer abandoned

PRIVATE CONTRACT MID STATES CONST. CO. 1-13-67

3000 (Hydraulic Ave.)

DIST. A A, S. S. NO. 20

UTILITY CONT. INC.
BK. NO. JF 61, PROJ. NO. C22-57
Booked Oct. 3, 1952

CONSTRUCTION RECORD

SERVICE RECORD

LINE NO.

LINE NO.	STATION	ELEVATION		Depth	MANHOLE	4-INCH "Y" BRANCHES		No. of Permit		House Number		DATE OF PERMITS	
		Ground	Grade			North West	South East	North West	South East	North West	South East	North West	South East
7.	3+0	122.6	113.27	9.3				#1422		5802-04 R			7-9-54
		120.3	113.67	6.6	3+99.1								
8.	0+0	124.6	118.04	6.6	New MH. 0+0								
	1+0	123.6	118.14	5.5									
	2+0	122.0	118.24	3.8									
		120.8	118.25	2.6	2+09.3	2+46.9							
	3+0	122.1	118.34	3.8		3+38.7							
		122.7	118.44	4.3	3+94.1								
	4+0					4+14.1							
						+73.8							
	5+0	124.8	118.54	6.3									
		125.2	118.56	6.6	5+14.2	5+35.8							
	6+0	125.0	118.64	6.4		6+55.0							
	7+0	124.7	118.74	6.0		7+17.5	7+14.5						
		124.5	118.77	5.7	7+27.0	7+79.0							
	8+0	125.6	118.84	6.8		8+42.8	8+39.8						
						+98.6	+95.6						
	9+0	124.8	118.94	5.9									
		128.2	119.00 out 119.09 in	9.2 9.1	9+64.8	Y North	9+78.6						
	10+0	128.9	119.13	9.8									
	11+0	127.2	119.23	8.0									
		126.7	119.28 out 119.47 in	7.4 7.2	11+45.9		11+68.7						
	12+0	129.3	119.53	9.8									
		131.5	119.56	11.9	12+32.8								
						Y NORTH							
	0+0	93.9	84.72	9.2	0+00 EXIST'G MH.								
	1+0	94.0	84.82	9.2									
		93.9	84.90	9.0	1+79.4								
	2+0	93.9	84.92	9.0									
		94.4	85.02	9.4			2+48.2						
		94.6	85.08	9.5	3+58.2								
	4+0	94.4	85.12	9.3									
	5+0	92.7	85.22	7.5									
	6+0	93.1	85.32	7.8									
		93.0	85.37	7.6	6+50.7	2 Stubs N.							
	7+0	92.9	85.42	7.5		8+41.6							
	8+0	93.1	85.52	7.6									
	9+0	92.3	85.62	6.7									
		92.7	85.68	7.0	9+59.2								
	10+0	92.4	85.72	6.7									
	11+0	92.1	85.82	6.3									
		92.4	85.88	6.5	11+63.1	2 Stubs N.							
	12+0	92.4	85.92	6.5									
	13+0	92.4	86.02	6.4									
		92.4	86.11	6.3	13+87.0	2 Stubs N.							
	14+0	92.5	86.12	6.4									
	15+0	92.7	86.22	6.5									
	16+0	92.9	86.32	6.6									
		92.9	86.32	6.6	16+03.5								
	17+0	93.7	86.42	7.3									
	18+0	93.5	86.52	7.0									
		93.2	86.58	6.6	18+60.6	Stub N.							
	19+0	93.6	86.62	7.0									
	20+0	93.8	86.72	7.1									
	21+0	93.6	86.82	6.8									
		93.6	86.82	6.8	21+04.6	21+95.5							
	22+0	93.2	86.92	6.3		22+95.5							
	23+0	93.0	87.02	6.0									
		92.9	87.08	5.8	23+58.8								
	24+0	92.9	87.12	5.8									
	25+0	93.4	87.22	6.2									
	26+0	93.8	87.32	6.5									
		94.0	87.34	6.7	26+17.1								
	27+0	94.0	87.43	6.6									
		94.5	87.52	7.0	27+91	Stub N.							

Line no. 7 continued from page 94.

DIST. AA, S. S. 20

93-1911-7
 # 3672 - top - 5701 Mt Vernon - 8-12-53
 # 3672 - 6 on 10 wye - 2971 S. Madison - 2-1-55 - Pray Bros
 # 83584 - top 3701 S. Mt Vernon - 6-14-65 (line # 8) (10+38.9)
 # C1539 - top 3000 S Hydraulic - 1-13-67 (from line # 8) Mid-States Const. Co.
 # C2710 - top into M.H. - 3000 S Hydraulic - 4-20-67 Central Air Conditioning
 on property

see p. 120 for additional