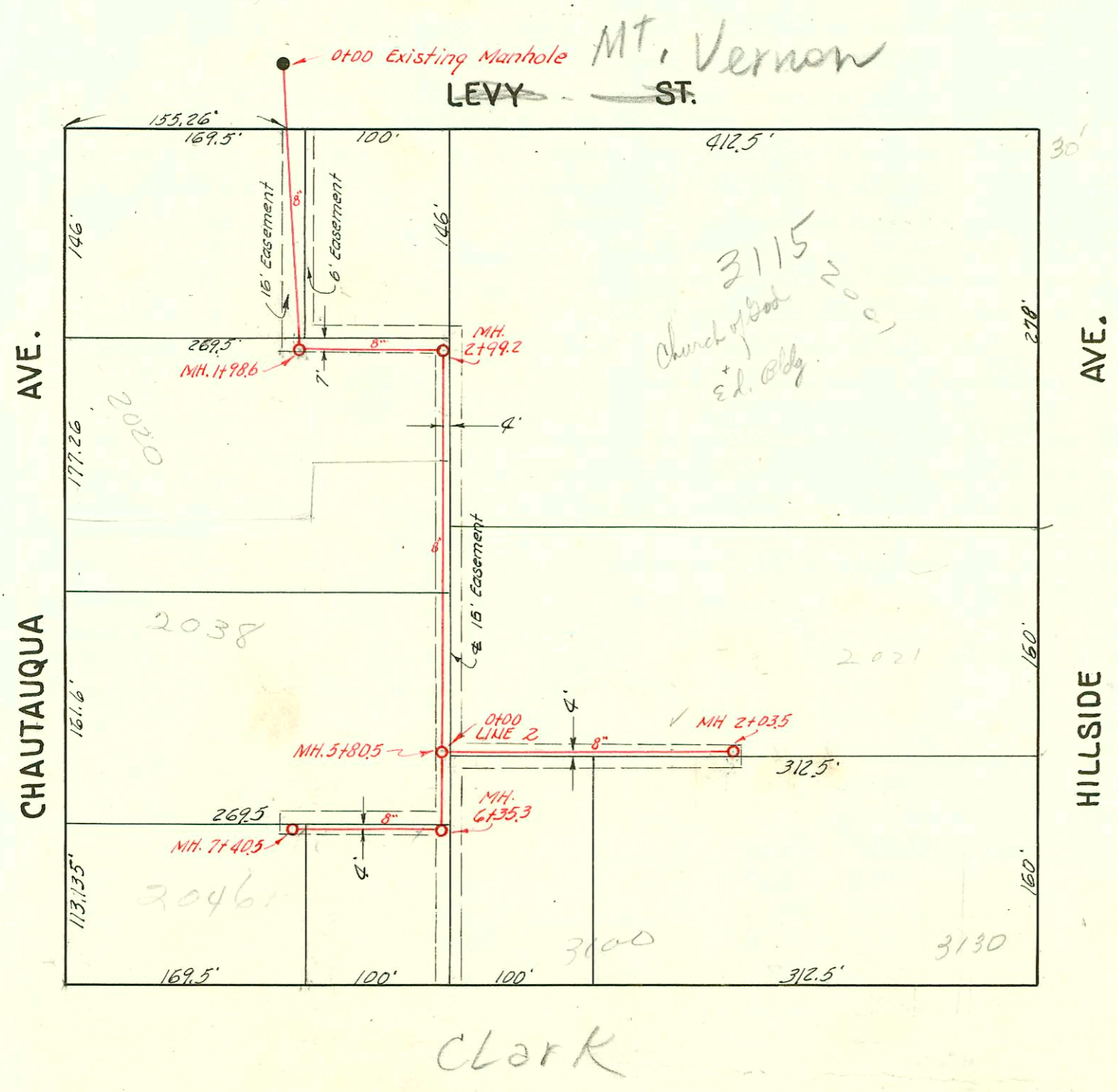


LAT. 9, SUB. Y, S. S. 12
 UTILITY CONTR. INC.
 PROJ. NO. C22-67
 BK. JT. 69, OCT. 6, 1952



LAT. 13, DC.S. 2, S. S. 12
 W. B. CARTER
 PROJ. NO. C22-29
 BK. JT. 69, OCT. 7, 1952

CONSTRUCTION RECORD

SERVICE RECORD

STATION	ELEVATION		Depth	MANHOLE	4-INCH "Y" BRANCHES		No. of Permit		House Number		DATE OF PERMITS	
	Ground	Grade			North West	South East	North West	South East	North West	South East	North West	South East
0+0	117.2	112.73	4.5	0+00 Existing MH.	0+28.7	0+25.7						
					+53.7	+50.7						
					+80.5	+77.5						
1+0	117.3	112.83	4.5		1+05.0	1+02.0						
					+32.0	+29.0						
					+56.2	+53.2						
					+80.6	+77.6						
2+0	117.2	112.93	4.3		2+04.7	2+01.7						
					+32.1	+29.1						
					+56.3	+53.3						
					+80.3	+77.3						
3+0	117.3	113.03	4.3	3+00.5	3+07.5	3+04.5						
					+31.8	+28.8						
					+55.8	+52.8						
					+83.0	+80.0						
4+0	117.4	113.13	4.3		4+07.0	4+04.0						
					+31.8	+28.8						
					+55.8	+52.8						
					+80.4	+77.4						
5+0	117.5	113.23	4.3		5+04.8	5+01.8						
					+31.9	+28.9						
					+55.4	+52.4						
					+80.1	+77.1						
	116.9	113.33	3.6	5+99.6								

Line 1

Line 2

Swth 2063-01288 5/2/03 1650 N. Kansas - Padgett & K. (Refer to F-264 for orig. con.)
 P.L. installed new 4" sigo line & tied to wye at sta 0+02 - installed C.O. also
 95-3887 9-5-95 2020 S. Chautauque - Bld's Addition (4" pvc sigo tied into exist orangeburg bldg sewer)
 049470-2021 J. Hellard (adm.) 11-20-94 - J. Krehler (1+31.5)
 B6304-16077 Municipal - 9-7-66 George P. Ry - top (5+74.5)
 43826 - Tap #31308. Clark & Jack Puckert - 1-20-53