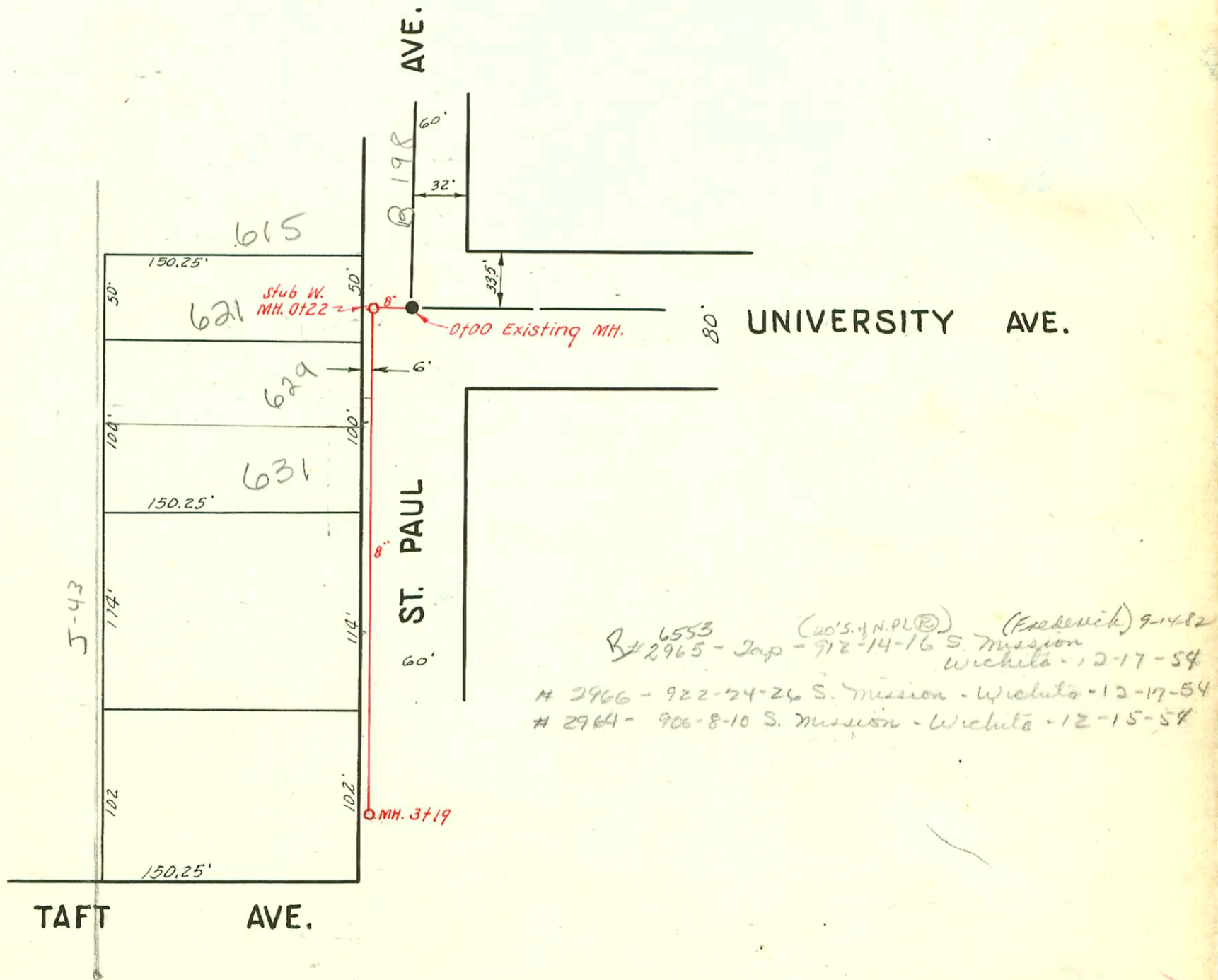


2002-00918 4/1/02 907 Apache- Bammes Plog- 4" 40PVC- Idisco, 1/4" fall, tied back to clay tile 3' from main

Rep- 2000-02202-10/9/00- 920 S DRURY LN- LUBBERS- 4" SCH 40, WYE w/Donut 36' N of MH 3+05.1(2+69.1) 1twinc0,
2V22, 1V45
2002-02071- 7/31/02- 957 Drury- Padgett Exc- city wye inspection- (on msmt) 4" PVC - 3H45, 1twinc0, 1H22,
2V22, 1V45



6553 (40'S. 1/4 PL. 2) (Erickson) 9-14-52
 # 2965 - Jap - 712-14-16 S. Mission Wichita - 12-17-54
 # 2966 - 922-24-26 S. Mission - Wichita - 12-17-54
 # 2964 - 906-8-10 S. Mission - Wichita - 12-15-54

LAT. 32, DIST. A, S.S. 21
 W. B. CARTER
 PROJ. NO. C22-36
 BK. NO. JF. 67
 10-23-52

CONSTRUCTION RECORD

SERVICE RECORD

LINE NO.

| LINE NO. | STATION | ELEVATION | | Depth | MANHOLE | 4-INCH "Y" BRANCHES | | No. of Permit | | House Number | | DATE OF PERMITS | |
|----------|---------|-----------|--------|--------|----------------------|---------------------|------------|---------------|------------|--------------|------------|-----------------|------------|
| | | Ground | Grade | | | North West | South East | North West | South East | North West | South East | North West | South East |
| | | | | | | | | | | | | | |
| 5. | 0+0 | 156.3 | 144.78 | 9.5 | 0+00 Existing MH. | | | | | | | | |
| | 1+0 | 156.1 | 144.98 | 11.1 | | 1+03.2 | 1+00.2 | #1305 | #1498 | 908 R | 901 | 9-17-51 | |
| | | | | | | +51.0 | +48.0 | #1306 | #1498 | 908 R | 901 | 6-24-54 | 10-20-52 |
| | 2+0 | 155.5 | 145.18 | 10.3 | | 2+11.8 | 2+08.8 | #1307 | #1499 | 914 | 915 | 6-24-54 | 7-15-54 |
| | | | | | | +69.3 | +66.3 | #1308 | #1500 | 920 R | 921 | 6-24-54 | 7-15-54 |
| | 3+0 | 154.6 | 145.38 | 9.2 | | | | #1309 | #1501 | 926 | 927 | 6-24-54 | 7-15-54 |
| | | 154.4 | 145.39 | 9.0 | 3+05.5 | 3+29.1 | 3+26.1 | #1310 | #1502 | 932 | 933 | 6-24-54 | 7-15-54 |
| | | | | | | +88.9 | +85.9 | #1311 | #1503 | 938 | 939 | 6-24-54 | 7-15-54 |
| | 4+0 | 154.1 | 145.58 | 8.5 | | 4+49.1 | 4+46.1 | #1312 | #1505 | 944 | 945 | 6-24-54 | 7-15-54 |
| | 5+0 | 152.7 | 145.78 | 6.9 | | 5+06.7 | 5+03.7 | #1313 | #1506 | 950 | 951 | 6-24-54 | 7-15-54 |
| 6+0 | 153.9 | 145.98 | 7.9 | | +63.5 | +60.5 | #1314 | #1507 | 956 | 957 | 6-24-54 | 7-15-54 | |
| | 154.1 | 146.00 | 8.1 | 6+13.6 | 6+08.6 | 6+05.5 | | | | | | | |
| 6. | 0+0 | 157.5 | 143.78 | 13.7 | 0+0 Existing MH. | | | | | | | | |
| | 1+0 | 156.3 | 143.98 | 12.3 | | 1+03.7 | 1+00.7 | #2293 | #2913 | 908 | 901 | 4-18-54 | 10-22-52 |
| | | | | | | +54.3 | +51.3 | #2294 | #2913 | 908 | 901 | 4-6-54 | 9-16-54 |
| | 2+0 | 155.4 | 144.18 | 11.2 | | 2+08.6 | 2+05.6 | #2295 | #2911 | 914 | 915 | 4-6-54 | 9-12-52 |
| | | | | | | +69.1 | +66.1 | #2296 | #2910 | 920 | 921 | 4-6-54 | 10-25-51 |
| | 3+0 | 154.9 | 144.38 | 10.5 | | | | #2297 | #2909 | 926 | 927 | 4-6-54 | 9-15-51 |
| | | 154.8 | 144.39 | 10.4 | 3+05.1 | 3+26.2 | 3+23.2 | #2298 | #2908 | 932 | 933 | 4-6-54 | 10-22-52 |
| | | | | | | +90.0 | +87.0 | #2299 | #2907 | 938 | 939 | 4-6-54 | 10-22-52 |
| | 4+0 | 154.4 | 144.58 | 9.8 | | 4+47.1 | 4+44.1 | #2300 | #2906 | 944 | 945 | 4-6-54 | 10-22-52 |
| | 5+0 | 153.2 | 144.78 | 10.4 | | 5+05.0 | 5+02.0 | #2301 | #2905 | 950 | 951 | 4-6-54 | 10-22-52 |
| 6+0 | 151.9 | 144.98 | 6.9 | | 5+62.5 | 5+59.5 | #2302 | #2904 | 956 | 957 | 4-6-54 | 10-22-52 | |
| | 151.5 | 145.01 | 6.5 | 6+14.8 | 6+08.0 | 6+05.0 | | | | | | | |
| 7. | 0+0 | 158.5 | 143.56 | 14.9 | 0+0 Existing MH. | | | | | | | | |
| | 1+0 | 157.5 | 143.76 | 13.7 | | 1+06.8 | 1+03.8 | #2963 | #73 | 6501-08-05 | 901 | 12-15-54 | 2-12-54 |
| | | | | | | +54.8 | +51.8 | #2964 | #74 | 6501-08-05 | 901 | 12-15-54 | 2-12-54 |
| | 2+0 | 156.7 | 143.96 | 12.7 | | 2+12.1 | 2+09.1 | #2965 | #75 | 6501-08-05 | 901 | 12-15-54 | 2-12-54 |
| | | | | | | +72.8 | +69.8 | #2966 | #76 | 6501-08-05 | 901 | 12-15-54 | 2-12-54 |
| | 3+0 | 155.9 | 144.16 | 11.7 | | | | #2967 | #77 | 6501-08-05 | 901 | 12-15-54 | 2-12-54 |
| | | 155.9 | 144.17 | 11.7 | 3+04.8 | 3+29.5 | 3+26.5 | #2968 | #78 | 6501-08-05 | 901 | 12-15-54 | 2-12-54 |
| | | | | | | +89.7 | +86.7 | #2969 | #79 | 6501-08-05 | 901 | 12-15-54 | 2-12-54 |
| | 4+0 | 155.1 | 144.36 | 10.7 | | 4+49.7 | 4+46.7 | #2970 | #80 | 6501-08-05 | 901 | 12-15-54 | 2-12-54 |
| | 5+0 | 154.2 | 144.56 | 9.6 | | 5+07.3 | 5+04.3 | #2971 | #81 | 6501-08-05 | 901 | 12-15-54 | 2-12-54 |
| 6+0 | 153.2 | 144.76 | 8.4 | | 5+64.9 | 5+61.9 | #2972 | #82 | 6501-08-05 | 901 | 12-15-54 | 2-12-54 | |
| | 153.2 | 144.79 | 9.4 | 6+15.3 | 6+06.8 | 6+03.8 | | | | | | | |
| 8. | 0+0 | 156.8 | 143.56 | 13.2 | 0+0 Existing MH. | | 0+98.6 | | | | | | |
| | 1+0 | 157.3 | 143.96 | | | 1+56.2 | 1+53.2 | #4195 | | 6441-43-45 | | 4-11-55 | |
| | 2+0 | 156.5 | 144.36 | 12.1 | | 2+10.6 | 2+07.6 | #4196 | | 6441-43-45 | | 4-11-55 | |
| | | | | | | | +58.9 | #4197 | | 6441-43-45 | | 4-11-55 | |
| | 3+0 | 155.8 | 144.62 | 11.2 | 2+66.6 | 2+83.2 | | #4198 | | 6441-43-45 | | 4-11-55 | |
| | 4+0 | 154.6 | 145.16 | 9.4 | | | | #4199 | | 6441-43-45 | | 4-11-55 | |
| | | | | | | | | #4200 | | 6441-43-45 | | 4-11-55 | |
| | 5+0 | 154.5 | 145.56 | 8.9 | | | | #4201 | | 6441-43-45 | | 4-11-55 | |
| | | 154.0 | 145.70 | 8.7 | 5+36.0 | | | #4202 | | 6441-43-45 | | 4-11-55 | |
| | 6+0 | 154.2 | 145.96 | 8.2 | | | | | | 6441-43-45 | | 4-11-55 | |
| | 154.1 | 146.02 | 8.1 | 6+15.3 | | | | | | | | | |
| 9. | 0+0 | 154.0 | 145.89 | 8.5 | 0+0 = 5+36 in Line 8 | Y North | Y South | | | | | | |
| | | | | | | 0+28.5 | 0+25.5 | | | | | | |
| | | 152.8 | 146.17 | 6.6 | 0+69.2 | | | | | | | | |
| | | | | | | | | | | | | | |
| | 0+0 | 112.6 | 108.42 | 4.2 | 0+0 Existing MH. | | | | | | | | |
| | | 111.5 | 108.44 | 3.1 | 0+22 | | | | | | | | |
| | 1+0 | 111.5 | 108.53 | 3.0 | | | | | | | | | |
| | | | | | | | | | | | | | |
| | 2+0 | 111.5 | 108.63 | 2.9 | | | | | | | | | |
| | 3+0 | 111.8 | 108.73 | 3.1 | | | | | | | | | |
| | 111.6 | 108.75 | 2.9 | 3+19.0 | | | | | | | | | |

Lat. 32, Dist. A, S. S. 21

#5607 - Inf - 631 S. St Paul - 6-20-53 - Roto Rooter
 #1043 - Top - 621 S. St Paul - 6-16-03 - Roto Rooter
 #2116 - Inf - 902 Woodlawn - 9-27-54 - Simmons
 #2164 - Inf - 906-08-10 Do - 8-10-55
 #2222 - Top - 643 S. St Paul - 10-3-58 (2+99) 11-22-72

Rep 2000-02262-9225 Mission
 1019100 - AE Henning
 411 SCH 40 - Donut (no msmt) ITWIN CO.
 1 - Fernco to cast iron @ house - do riser only