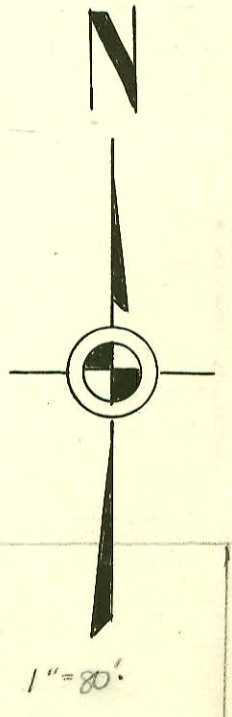
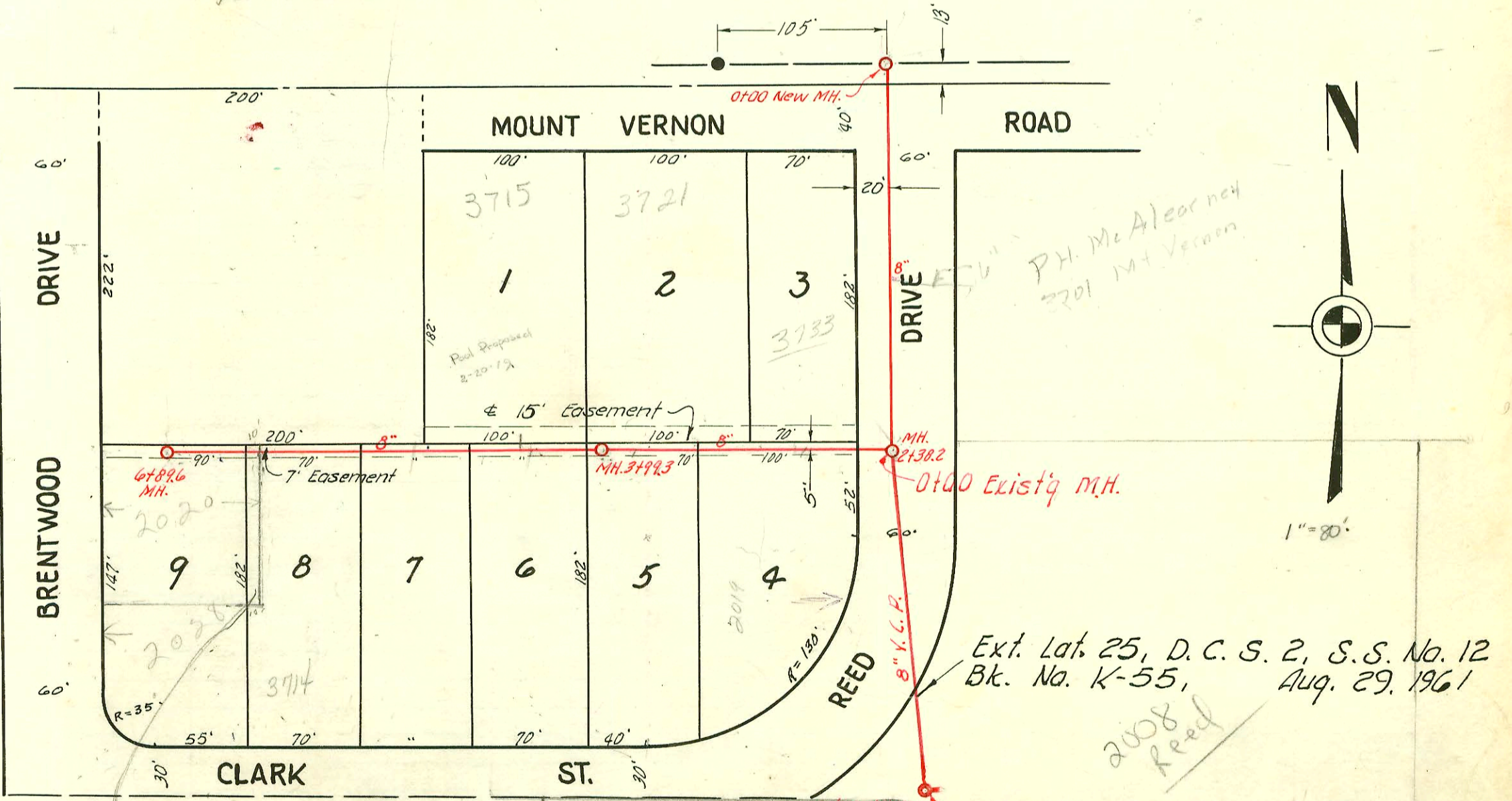


1" = 80'

LAT. 3, DIST. R, S.S. 20
 UTILITY CONTRACTORS INC.
 BK. NO. JF. 58, PROJ. NO. C22-71
 NOV. 6, 1952



Ext. Lat. 25, D. C. S. 2, S. S. No. 12
 Bk. No. K-55, Aug. 29, 1961

LAT. 25, D.C.S. 2, S.S. 12
 W. B. CARTER
 BK. JF. 65, PROJ. NO. C-22-65
 NOV. 8, 1952

Private lease agree
 West 10' of N 1/4 of
 Lot 8 BK 8
 Film 115 Page 6305
 6/18/40 3765

CLARK ST
 3709
 See J-50
 unplat'd

CONSTRUCTION RECORD

SERVICE RECORD

LINE NO.

LINE NO.	STATION	ELEVATION		Depth	MANHOLE	4-INCH "Y" BRANCHES		No. of Permit		House Number		DATE OF PERMITS		
		Ground	Grade			North West	South East	North West	South East	North West	South East	North West	South East	
1.	0+0	124.2	114.81	9.4	0+00 Existing MH.	0+31.2		#6509		1557		9-2-53		
	1+0	124.4	114.91	9.5		0+97.6		17208		1558		10-27-66		
	2+0	125.2	115.01	10.2		1+79.1		#6702		1600		10-14-53		
			125.6	115.13	10.5	2+26.5	Stub No. NORTH 2+36.7		#5328		1600		5-25-53	
	3+0	126.1	115.21	10.9										
	4+0	124.6	115.31	9.3										
	5+0	123.4	115.41	8.0		4+85.6		#3108		1629		11-3-52		
			121.2	115.45	5.7	5+40.0								
			122.0	115.55	6.4									
		7+0	123.4	115.71	7.7									
	8+0	124.3	115.81	8.5										
		127.3	115.84	11.5	8+27.7	Stub East		#5433		1555		7-1-55		
2.	0+0	121.2	115.55	5.6	0+00 = 5+40.0 in Line #1		0+68.0		#3109		1629		11-3-52	
		120.6	115.64	5.0	0+92.3									
3.	0+0	124.4	115.00	9.4	0+00 Existing MH.									
	1+00	124.8	115.10	9.7	1+00	Stub SW.		#3823		1640		3-10-55		
								#3420		1604		12-8-52		
								C76424				2-5-80		
LAT. 25, D.C.S. 2, S.S. 12.														
						NORTH	SOUTH							
	0+0	128.4	115.20	13.2	0+00 New MH.									
	1+0	125.2	115.60	9.6										
	2+0	124.5	116.00	8.5										
		124.4	116.13	8.3										
		124.4	119.38	5.0	2+38.2	3+00.0	2+97.0	#3201				11-13-52		
	3+00	127.4	119.60	8.8		3+66.9	3+33.5	#3317				11-24-52		
								9767				1-7-84		
								#274				3-20-56		
		131.9	120.00	11.9	3+99.3									
		124.00	124.00	7.9										
	4+0					4+49.1	4+46.1	#3321				3-30-79		
	5+0	134.1	124.40	9.7								11-24-52		
						5+85.6	5+18.0	#4336				4-20-55		
						6+70.2	6+67.2	#6620	6700			10-7-55		
	6+0	135.3	124.80	10.5								7-21-58		
		134.1	125.16	8.9	6+89.6									

EXT. LAT. 25 D.C.S. 2, S.S. NO. 12

0+00	189.7	182.00	7.7	2+38.2 in (Lat. 25, D.C.S. 2, No. 12)
1+00	188.1	182.40	5.7	1+00"
2+00	187.6	182.80	4.8	
	187.2	182.85	4.3	2+13'

2001-00356-2/2001-3721 E Mt Vernon Rd - Reddi Rootr - 4" SCH40 ITUSINCO, 1 Fernco to CT@house, 1 Fernco to clay - CO riser only

6878 - 3701 Mt Vernon - 11-5-53 - Let surge - Harry Mann (#20.00 special fee paid 11-6-53)
 # 2590 - 2019 Red Dr. - 12-9-54 - (Hemming)
 # 3830 - Tap 3 manhole - 2-17-55 - Davidson Pkwy
 # 979 - Tap - 3701 E. Clark - 6-4-56 - Al Hemming
 # 1000 - Tap manhole at sta. 0+00 - 3802 Mt. Vernon - Ruel & Hemming - 6-5-56
 # 6912 - Tap 2028 Brentwood, R. & Danhue Pkwy. - 5-21-58 (6+29.6)
 7556 Tap 3714 - 7-17-58