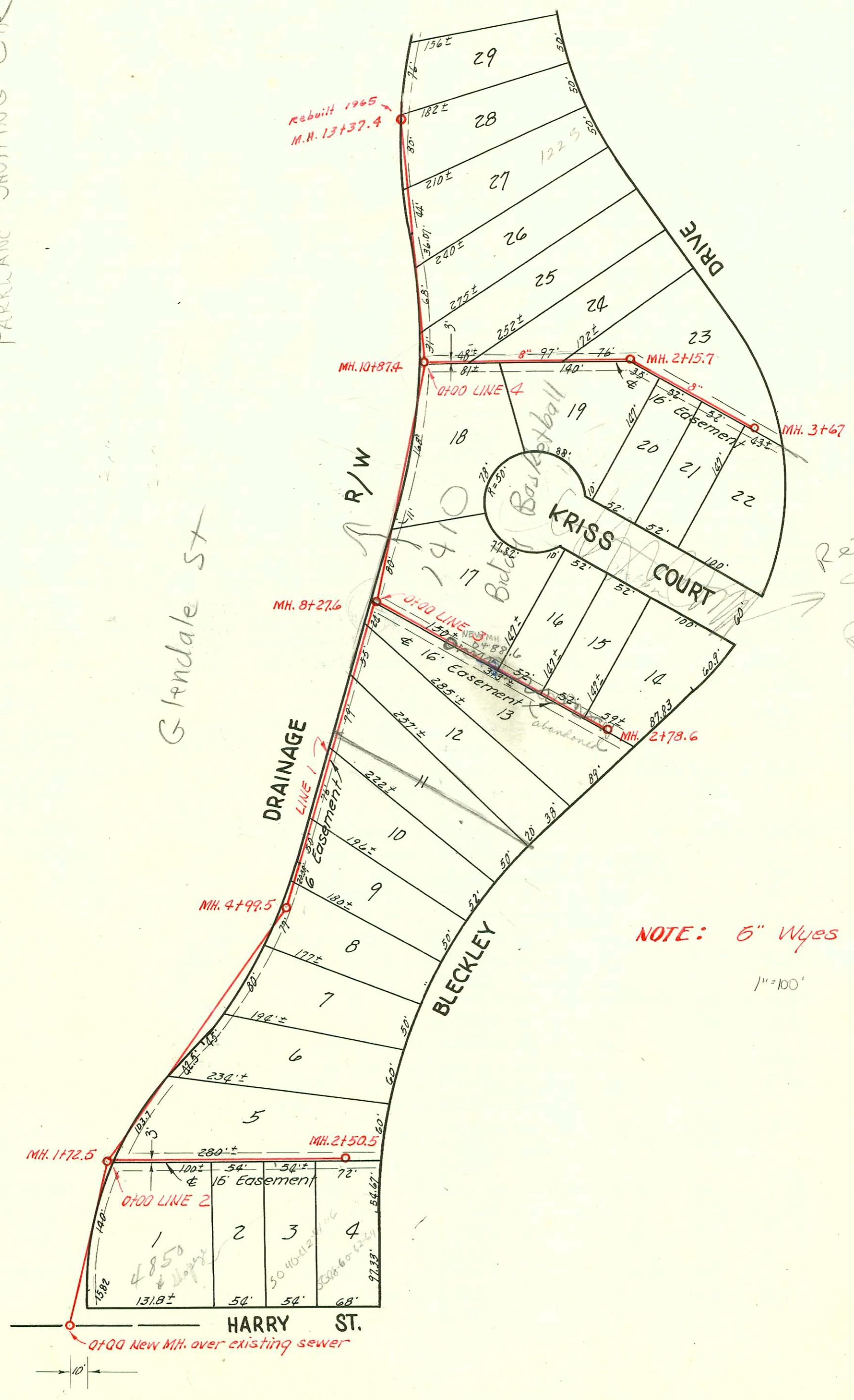


PARKLANE SHOPPING CTR

Glendale St



Replat
See
Plat Book
1159

NOTE: 6" Wyes
1"=100'

LAT. 23, D.C.S. 2, S.S. N^o 12
W. B. CARTER
BK. N^o JT. 68, PROJ. N^o C22-62
NOV. 12, 1952

CONSTRUCTION RECORD

SERVICE RECORD

LINE NO.

LINE NO.	STATION	ELEVATION		Depth	MANHOLE	6" INCH "Y" BRANCHES		No. of Permit		House Number		DATE OF PERMITS		
		Ground	Grade			North West	South East	North West	South East	North West	South East	North West	South East	
1.	0+0	138.0	130.00	8.0	0+0 New MH.									
	1+0	137.6	130.10	7.6										
		138.4	130.17	8.2	1+72.5									
	2+0	138.5	130.20	8.3										
	3+0	132.3	130.30	2.0										
	4+0	134.6	130.40	4.2										
		137.6	130.50	7.1	4+99.5									
	5+0								24384		1501-3-5-71 R		11-30-89	
	6+0	134.7	130.60	4.1					#3484		S. Buckley		12-11-52	
	7+0	136.5	130.70	5.8										
	8+0	137.8	130.80	7.0										
	138.7	130.83 out 132.00 in	7.9 6.7	8+27.6										
9+0	139.8	130.90	8.9											
10+0	141.4	131.00	10.4											
	141.1	131.09 out 133.00 in	10.0 8.1	10+87.4										
11+0	139.4	131.10	8.3											
12+0	135.8	131.20	4.6						66528		1225 S. Buckley		9-26-78	
									66529		1225 S. Buckley		9-26-78	
13+0	136.0	131.30	4.7											
	134.8	131.34	3.5	13+37.4										
2.	0+0	138.4	134.18	4.2	0+00 = 1+72.5 in Line #1				215805		4850 E Harry		9-8-69	
	1+0	140.8	134.58	6.2					#3483	#3480	1523-35-7-75 Buckley & Harry	12-11-52	12-11-52	
										#3483	5010-42-44-46 E. Buckley - R	11-30-89	12-11-52	
2+0	145.4	134.98	10.4						#3482	5010-42-44-46 E. Buckley		12-11-52		
	146.6	135.18	11.4	2+50.5										
3.	0+0	138.7	132.00	6.7	0+00 = 4+27.6 in Line #1				95957		1410 R Glendale (Biddle & Ball)		12-27-94	
	1+0	137.1	132.40	4.7	0+88									
2+0	138.0	132.80	5.2	abandoned					043903		1401-3-5-71 R		8-11-74	
	144.7	133.12	11.6	2+78.6					#3486				12-11-52	
4.	0+0	141.1	133.00	8.1	0+00 = 10+87.4 in Line #1									
	1+0	139.6	133.40	6.2										
	2+0	137.3	133.80	3.5										
		137.4	133.87	3.5	2+15.7									
3+0	138.6	134.20	4.4											
									043902		1401-3-5-71 R		3-11-74	
	146.7	134.48	12.2	3+67.0					#3487		1501-3-5-71 R		12-11-52	

B #34137 1511 S Buckley Eastman 12-7-89 (eye 31' S of NPL)
 #49941 - 1410 S. Glendale - 12/31/74 - Mild Savina - Davida (4" Stub E. out of 0+88.6 new MH)
 #3485 - Dup - 1509-11-13-75 S. Buckley - 12-11-52 - Richard to Fay, Jr.