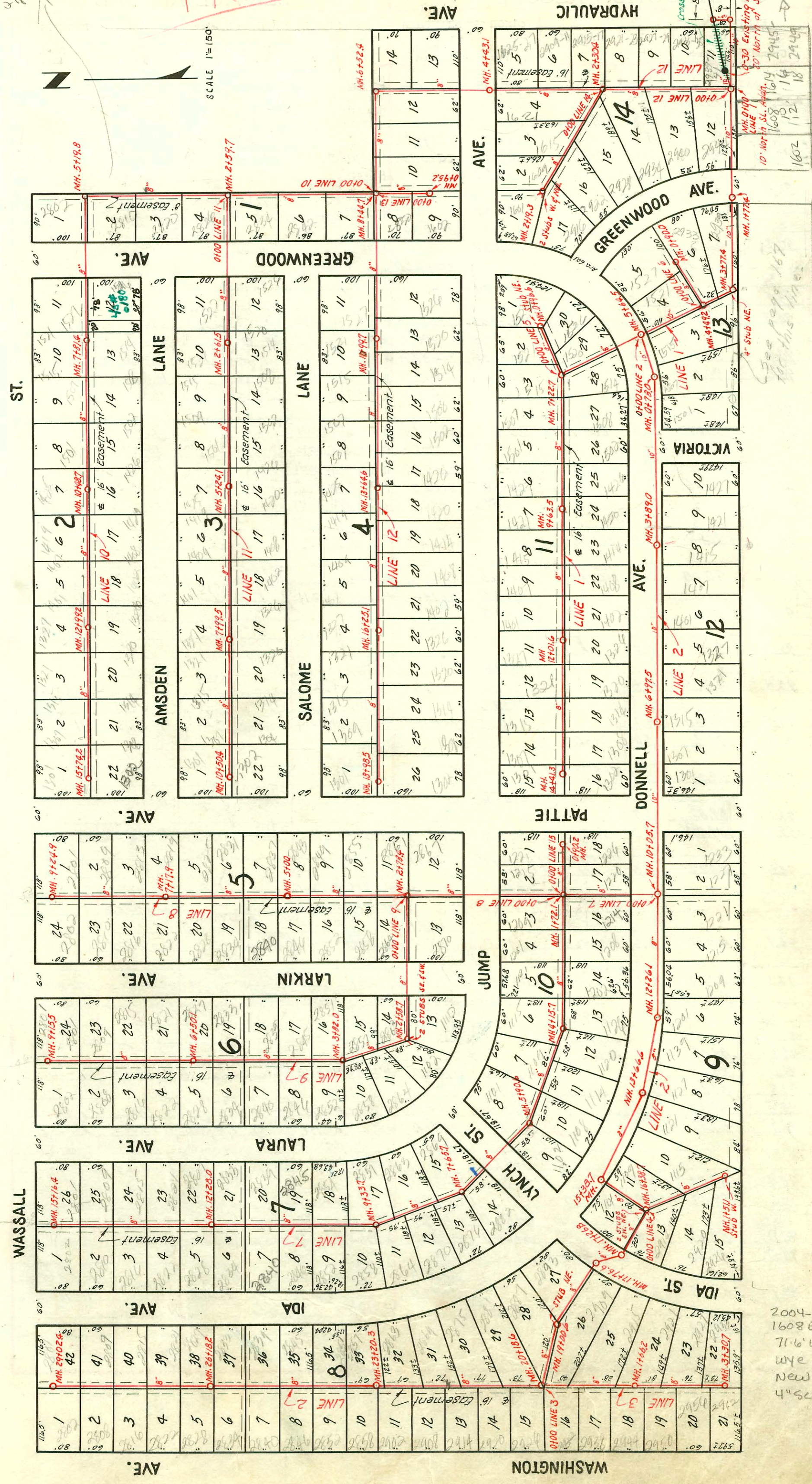


TRAP AREA
2111 1/2
#9000
2800
4000
2111 1/2
#9000
2800
4000

TRAP AREA



SCALE 1"=150'

ST.

AVE.

AVE.

AVE.

AVE.

AVE.

NOTE: Construction Record for this project is shown on pages 102 to 106 inclusive.

LAT. 36, S.S. No 20
UTILITY CONTR. INC.
BK. No JF. 70, PROJ. No C22-52
NOV. 1952

2004-00147, 116104
1608 E Luther - Padgett Ex
71'6" W of MH - tied back to
wee wldonut, twins co
New trap, 2000,
4" SCH 40 PK 17 1/2" Fall

Luther

CONSTRUCTION RECORD

SERVICE RECORD

LINE NO.

STATION	ELEVATION		Depth	MANHOLE	4-INCH "Y" BRANCHES		No. of Permit		House Number		DATE OF PERMITS	
	Ground	Grade			North West	South East	North West	South East	North West	South East	North West	South East
0-30		87.47		0-30 Existing MH.								
0+0	95.6	87.49	8.1	0+0 New MH.								
1+0	95.2	87.60	7.6									
	95.1	87.68	7.4	1+77.1								
2+0	95.0	87.70	7.3					8775	1532 Lather			7-22-83
3+0	94.9	87.80	7.1									
4+0	94.7	87.88	6.8	3+77.4	4" Stub NE.			4049	2939 Greenwood			2-6-53
	94.1	87.90	6.2									
	94.1	87.95	6.2	4+49.2								
5+0	94.6	88.00	6.6									
	94.2	88.06	6.1	5+64.5								
6+0	94.0	88.10	5.9									
7+0	94.5	88.20	6.3									
	94.5	88.22	6.3	7+22.7								
					7+31.5							
					7+81.4	+84.4						
8+0	94.3	88.30	6.0		8+35.6	8+38.6						
					+99.6							
9+0	94.3	88.40	5.9									
					9+02.6							
					9+53.9	9+56.9						
	94.5	88.46	6.0	9+63.5								
10+0	94.6	88.50	6.1		10+23.6	10+26.6						
					+87.4	+90.4						
11+0	94.8	88.60	6.2		11+47.8	11+50.8						
12+0	94.8	88.70	6.1									
	94.8	88.70	6.1	12+01.6	12+08.7	12+11.7						
					+69.3	+72.3						
13+0	94.6	88.80	5.8		13+30.1	13+33.1						
					+81.6	+84.6						
14+0	94.0	88.90	5.1		14+32.3	14+35.3						
	93.8	88.94	4.9	14+41.3								
2.	0+0	94.2	88.06	6.1	0+100=5+69.5 in Line #1							
	93.9	88.14	5.8	0+78.0								
1+00	94.0	88.16	5.8									
2+0	94.3	88.26	6.0									
3+0	94.6	88.36	6.2									
	94.8	88.45	6.3	3+89.0								
4+0	94.7	88.46	6.2									
5+0	95.2	88.56	6.6									
6+0	95.3	88.66	6.6									
	95.2	88.76	6.4	6+97.5								
7+0	95.3	88.76	6.5									
8+0	94.0	88.86	5.1									
9+0	94.0	88.96	5.0									
10+0	92.9	89.06	3.8									
	92.9	89.06	3.8	10+05.7								
11+0	94.6	89.16	5.4									
12+0	94.6	89.26	5.3									
	94.7	89.28	5.4	12+26.1								
13+0	94.1	89.36	4.7									
	94.2	89.43	4.8	13+66.6								
14+0	93.9	89.46	4.4									
15+0	93.9	89.56	4.3									
	93.7	89.59	4.1	15+38.7								
16+0	94.8	89.66	5.1									
	94.7	89.69	5.0	16+38.7								
17+0	94.1	89.76	4.3									
	93.5	89.78	3.7	17+26.8								
	93.5	89.83	3.7	17+76.6								
18+0	93.9	89.86	4.0									

This project continues on page 103.

#3600 - Inf - 1115 Donnell - 12-23-52 - Callison Oly. Co

#5392 - Inf - 1308 Salome
 #5393 - Inf - 1314 Salome
 #5396 - Inf - 1402 Salome
 #5397 - Inf - 1408 Salome
 #5398 - Inf - 1420 Salome
 #5401 - Inf - 1508 Salome
 #5402 - Inf - 1514 Salome
 #5403 - Inf - 1520 Salome

J.A. Smith
 6-1-53

#7290 - bond - 1532 Lather - 12-29-53 - Nichell + Hensley
 #7291 - bond - 1602 Lather - 12-29-53 - Nichell + Hensley
 #4040 - Inf - 1515 Donnell - 2-6-53 - Callison Oly. Co

#4898 - Inf - 2802 Greenwood
 #4900 - Inf - 2820 Greenwood
 #4901 - Inf - 2826 Greenwood
 #4902 - Inf - 2834 Greenwood
 #4903 - Inf - 2840 Greenwood
 #4904 - Inf - 2850 Greenwood

Callison Oly. Co
 4-18-53

1+27.2 - Inf - 1135 Donnell - 11-26-54