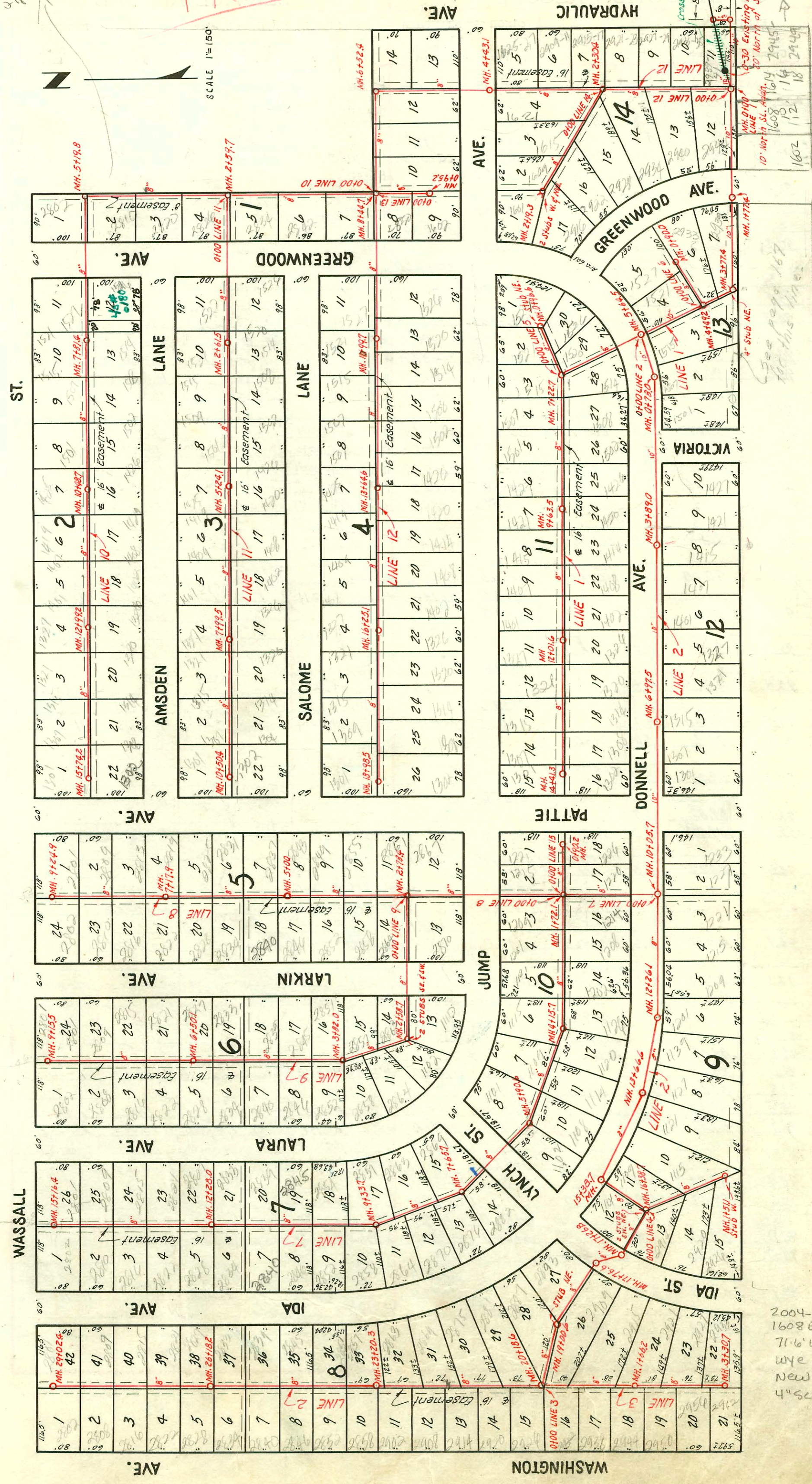


TRAP AREA
2111 1/2
#9000
2800
4000
2111 1/2
#9000
2800
4000

TRAP AREA



Luther

NOTE: Construction Record for this project is shown on pages 102 to 106 inclusive.

LAT. 36, S.S. No 20
UTILITY CONTR. INC.
BK. No JF. 70, PROJ. No C22-52
NOV. 1952

2004-00147, 116104
1608 E Luther - Padgett Ex
71.6' W of MH - tied back to
wee w/donut, twins co
New trap, 2000,
4" SCH 40 PK 17 1/4" fall

see I-82

pages on D cover

CONSTRUCTION RECORD

SERVICE RECORD

LINE NO.
2.
Continued

STATION	ELEVATION		Depth	MANHOLE	4-INCH "Y" BRANCHES		No. of Permit		House Number		DATE OF PERMITS			
	Ground	Grade			North West	South East	North West	South East	North West	South East	North West	South East	North West	South East
18+0					18+38.4	18+41.4	#3022	#3210	2893	2909	10-28-52	11-13-52		
19+0	93.8	89.95	3.9	19+00.6			#3021		2887		10-28-52			
20+0	95.1	90.06	5.0		Y West	Y East	#3006	#3020	2926	2881	10-28-52	10-28-52		
	95.3	90.07	5.2	20+18.6	20+35.5	20+38.5	#3005		2920		10-28-52			
21+0	94.8	90.16	4.6			21+16.2		#3019	2975		10-28-52	10-28-52		
					21+55.1		#3004		2914		10-28-52			
22+0	94.4	90.26	4.1		21+90.6		#3003		2869	R see next	10-28-52	11-16-51		
						22+63.0		#3017	2908		10-28-52	10-28-52		
						22+74.7		#3002	2902		10-28-52			
23+0	93.9	90.36	3.5				#3001	#3016	2856	2857	10-28-52	10-28-52		
	94.3	90.38	3.9	23+20.3	23+35.3	23+32.3	#3000	#3015	2857	2857	10-28-52	10-28-52		
24+0	94.3	90.46	3.8		24+55.8	24+52.8	#2999	#3014	2846	2845	10-28-52	10-28-52		
25+0	94.2	90.56	3.6		25+16.5	25+13.5	#2998	#3013	2840	2835	10-28-52	10-28-52		
						25+77.2	25+74.2	#2997	#3012	2834	2833	10-28-52	10-28-52	
26+0	93.8	90.66	3.1				#2996	#3011	2828	2827	10-28-52	10-28-52		
	94.0	90.67	3.3	26+18.2	26+37.0	26+34.0	#2995	#3010	2822	2821	10-28-52	10-28-52		
27+0	93.8	90.76	3.0		27+58.9	27+55.9	#2994	#3009	2816	2815	10-28-52	10-28-52		
28+0	93.8	90.86	2.9		28+19.5	28+16.5	#2993	#3008	2810	2809	10-28-52	10-28-52		
						28+89.6	28+86.6	#2992	#3007	2802	2801	10-28-52	10-28-52	
29+0	94.0	90.96	3.0	29+02.4										
3.	0+0	95.3	5.2	0+00=20+18.6 in Line #2	0+20.5		#4344		2932		3-2-53	8/13/01 see next		
					0+76.6		#4345		2931		3-2-53	11-13-52		
1+0	95.5	90.18	5.3		1+31.5		#4346		2940		3-2-53			
						1+57.2		#3212	2921			11-13-52		
						1+91.8		#4347	2920		3-2-53			
2+0	95.8	90.28	5.5			2+34.6		#3213	2916			11-13-52		
					2+53.5		#5963		2956		7-29-53			
3+0	95.5	90.38	5.1		3+04.5	3+07.5	#5962	#3214	2962	2933 B	7-29-53	9-20-90		
	95.4	90.41	5.0	3+30.7								11-13-52		
4.	0+0	94.7	5.0	0+00=16+38.7 in Line #2	0+88.9		#3216		2920			11-13-52		
1+0	94.5	89.80	4.7				#3217		2925			11-13-52		
	95.1	89.85	5.2	1+51.1	1 Stub W.									
5.	0+0	94.5	6.3	0+00=7+22.7 in Line 1	Y North	Y South								
					0+06.9	0+09.9	#3886	#4034	1515	1520	1-27-53	2-6-53		
					+52.4		#3887		1521		1-27-53			
						0+68.1	#4035		1526			2-6-53		
	94.9	88.32	6.6	0+96.6	4" Stub NE		#3888		1527		1-27-53			
6.	0+0	94.1	6.1	0+00=4+49.2 in Line #1	0+32.0		#4041		1521		2-6-53	7-21-83		
					+86.0		#4042		1522		2-6-53	2-6-53		
					0+90.0									
7.	0+0	92.9	3.8	0+00=10+05.7 in Line 2										
1+0	93.4	89.17	4.2		1+91.0	1+94.0	#3765	#3773	1209	1214	1-14-53	1-14-53		
	93.8	89.24	4.6	1+72.1										
2+0	93.5	89.27	4.2		2+55.0	2+58.0	#3764	#3772	1201	1208	1-14-53	1-14-53		
3+0	93.5	89.37	4.2		3+18.8	3+21.8	#3763	#3771	1202	1202	1-14-53	1-14-53		
						+79.9	#3770		1206			1-14-53		
					3+97.8		#3762		1215		1-14-53			
4+0	94.4	89.47	4.9											
	94.4	89.49	4.9	4+15.7		4+30.2	#3769		1200			1-14-53		
					4+86.0	4+89.0	#3761	#3768	1109		1-14-53	1-14-53		
5+0	94.0	89.57	4.4		5+60.0	5+57.0	#3760	#3767	1101		1-14-53	1-14-52		
	94.0	89.66	4.3	5+90.6					1109					
6+0						6+12.8			1102		9-30-91			
7+0	93.7	89.77	3.9			7+25.6	#3766	#3209	2864		1-14-53	11-13-52		
						7+55.5	#3195		2887		11-13-52			
	93.6	89.84	3.8	7+65.7										

This Project Continues on page 104
92-1764, 7
2304-92 (2801 & Hydraulics) Callison Pkg. 10-20-51 - Tim Lubbers (Slo at INSP Note.)

2001-02937- 2869 S Ida - 11/16/41 - Conny Wright - 4" SCH40 Replaced 25' on low end 172' N of MH 20118 (on west) side)
1 Dir. Co, 1H45, Trap, 1V45, 1H22

2001-01983- 8/13/61- 2915 S IDA AVE - Poto - 4" SCH40 - IRWIN CO, 2 Fernco to clay