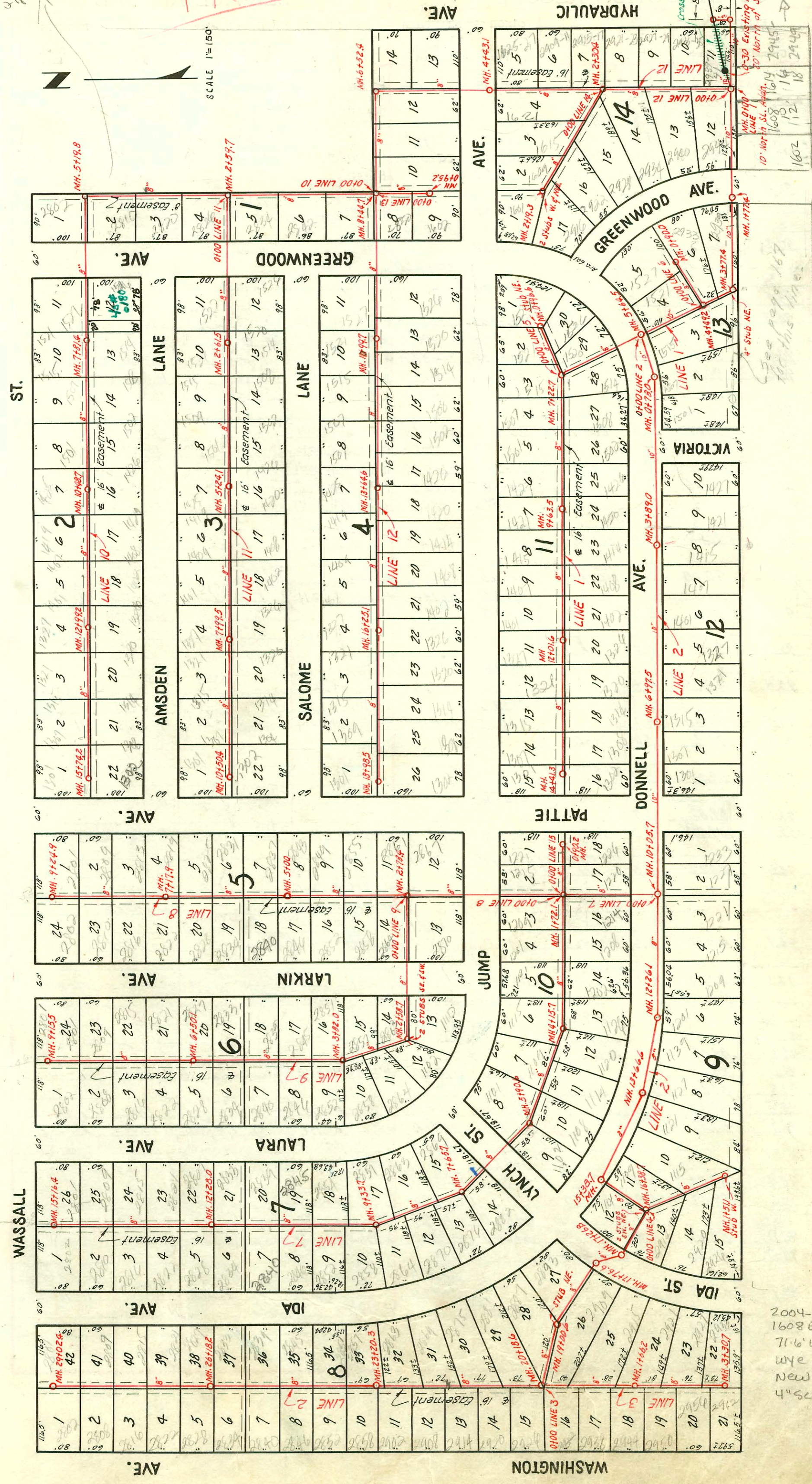


TRAP AREA
2111 1/2
#9000
2800
4000
2111 1/2
#9000
2800
4000

TRAP AREA



Luther

NOTE: Construction Record for this project is shown on pages 102 to 106 inclusive.

LAT. 36, S.S. No 20
UTILITY CONTR. INC.
BK. No JF. 70, PROJ. No C22-52
NOV. 1952

2004-00147, 116104
1608 E Luther - Padgett Ex
71'6" W of MH - tied back to
wee w/donut, twins co
New trap, 2000,
4" SCH 40 PK 17 1/2" fall

see I-82

CONSTRUCTION RECORD

SERVICE RECORD

LINE NO.
7.
Continued

STATION	ELEVATION		Depth	MANHOLE	4-INCH "Y" BRANCHES		No. of Permit		House Number		DATE OF PERMITS	
	Ground	Grade			North West	South East	North West	South East	North West	South East	North West	South East
8+0	93.6	89.87	3.7	7+65.7	7+81.7		#3194		2876 Lama		11-13-52	
9+0	93.6	89.97	3.6						2870 Lama	2863 Lama	11-13-52	11-13-52
10+0	94.3	90.07	4.2	9+33.7	9+52.7		#3191		2858 Lama		11-13-52	
11+0	94.5	90.17	4.3				#3189	#3208	2857 Lama		11-13-52	11-13-52
12+0	94.7	90.27	4.4				#3187	#3202	2857 Lama		11-13-52	11-13-52
13+0	94.5	90.37	4.1	12+28.0	12+46.1	12+43.1	#3186	#3200	2857 Lama		11-13-52	11-13-52
14+0	94.4	90.47	3.9				#3184	#3198	2857 Lama		11-13-52	11-13-52
15+0	94.5	90.57	3.9				#3182	3196	2857 Lama		11-13-52	11-13-52
0+0	93.8	89.24	4.6	0+00 = 1+72.1 in Line 7								
1+0	93.7	89.34	4.4									
2+0	94.0	89.44	4.6		2+08.2	2+05.2	#3450	#3178	2879 Larkin	2861 Pattie	12-8-52	11-13-52
3+0	94.2	89.52	4.7	2+78.4	2+90.5	2+87.5	#3449	#3179	2864 Larkin	2867 Pattie	12-8-52	11-13-52
4+0	94.3	89.64	4.7		3+54.3	3+51.3	#3448	5525	2858 Larkin	2855 Pattie	12-8-52	6-10-53
5+0	94.4	89.74	4.7	5+00.0	5+32.0	5+29.0	#3445	2003-01723	2852 Larkin	2849 Pattie	12-8-52	9-19-53
6+0	94.3	89.84	4.5		6+53.8	6+50.8	#3443	#6481	2848 Larkin	2831 Pattie	12-8-52	9-19-53
7+0	94.7	89.94	4.8		7+11	7+08.0	#3442	#6640	2828 Larkin	2819 Pattie	12-8-52	10-6-53
8+0	94.9	89.96	4.9	7+17.9	7+71.8	7+68.8*	#3441	#6639	2816 Larkin	2813 Pattie	12-8-52	10-6-53
9+0	95.1	90.04	5.1		8+32.6	8+29.6	#3440	#6638	2810 Larkin	2807 Pattie	12-8-52	10-6-53
0+0	94.2	89.52	4.7	0+0 = 2+78.4 in Line 8	0+48.6							
1+0	94.2	89.62	4.6									
2+0	94.5	89.72	4.8									
3+0	95.0	89.82	5.2	2+58.7	3+01.5	3+44.2	#3426	#3427	1102 Larkin	1110 Larkin	12-8-52	12-8-52
4+0	94.9	89.90	5.0	3+82	4+05.6	4+02.6	#3424	#3427	2858 Lama		12-8-52	
5+0	94.9	89.92	5.0		5+21.4	5+18.4	#3419	#3436	2852 Lama	2851 Larkin	12-8-52	12-8-52
6+0	95.1	90.02	5.1		6+39.8	6+36.8	#3417	#3434	2846 Lama	2845 Larkin	12-8-52	12-8-52
7+0	94.9	90.22	4.7	6+50.1	7+00.3	7+58.4	#3416	#3433	2840 Lama	2839 Larkin	12-8-52	12-8-52
8+0	94.8	90.32	4.5		8+19.8	8+16.8	#3415	#3432	2832 Lama	2827 Larkin	12-8-52	12-8-52
9+0	94.7	90.42	4.3	9+15.5	9+15.5		#3414	#3431	2828 Lama	2821 Larkin	12-8-52	12-8-52
0+0	94.2	88.34	5.9	0+00 = 8+44.7 in Line 12	0+23.1							
1+0	94.4	88.44	6.0		1+98.8							
2+0	94.0	88.54	5.5									
3+0	94.1	88.60	5.5	2+59.7	2+87.1							
4+0	94.2	88.74	5.5		3+75.0							
5+0	94.3	88.84	5.5		4+62.2							
6+0	94.4	88.86	5.5	5+19.8	5+49.1							
7+0	94.6	88.94	5.7		6+96.4	6+99.4	#4999	#4997	2810 Lama	1529 Lama	4-18-53	4-14-53

8.

9.

10.

This project continues on page 105

#5514 - Tap - 2837 Pattie - 6-10-53 - J.A. Smith
 #5525 - Tap - 2855 Pattie - 6-10-53 - J.A. Smith
 #3425 - Tap - 2864 Lama - 12-8-52 - Callison Oly. Co.
 #3908 - Tap - 2813-15-17-19 S. Hydraulic - Callison - 3-17-55
 #3907 - Tap - 2811 S. Hydraulic - Callison - 3-17-55
 #3906 - Tap - 2809 S. Hydraulic - Callison - 3-17-55
 #3905 - Tap - 2805-07 S. Hydraulic - Callison - 3-17-55
 #3904 - Tap - 2823-25-27 S. Hydraulic - Callison - 10-10-56
 #85286 - 2805 S. Hydraulic - Larry Oly 3-21-66 (5+01.7)
 #135535 - 2805 S. Hydraulic - Larry Oly 4-29-66
 #12-2835-7 - 2828/42 - 2801 S. Hydraulic - N.C. Boyd FRANKS - (6" tap - 150.5 S of MH) 6" SOR 35"

2002-00203-1/23/02-2845 S. Laura - Bammes Plog - twin co, 129.4' N of MH 9733.7 (10+63.1) 4" Sch 40 PVC, 1/4" fall, 1 V22, Predco

2003-00919-4/8/03-2855 S. Patti - Always Plog - 4" PVC, twin co, New house trap, city wye repair - 72.9' N of
MH 2778.4 (3+51.3)

Sept 2002-00203 11/23/02 2845 S. Laura Bammes: ^{Repl}