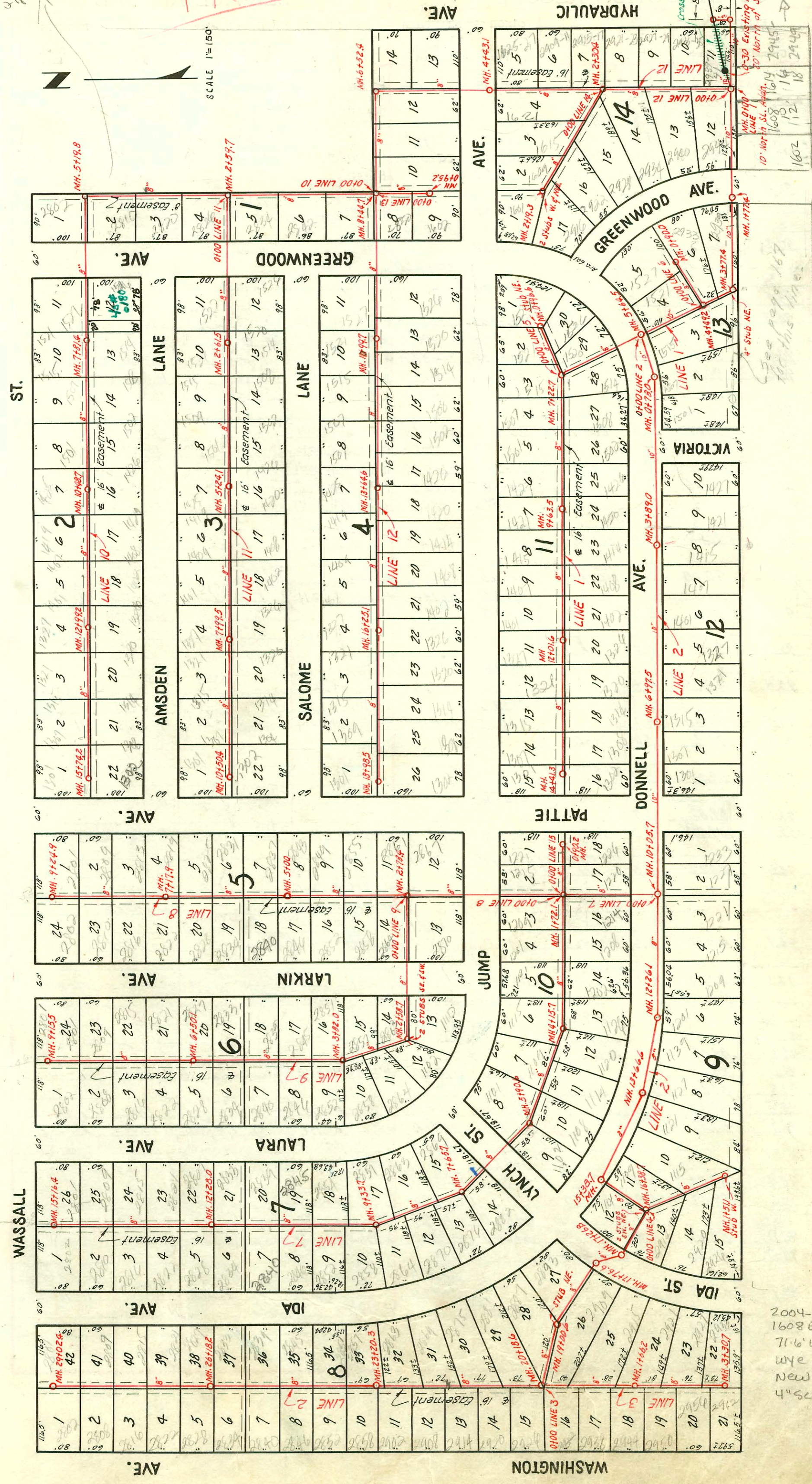


TRAP AREA
2111 1/2
#9000
2800
4000
2111 1/2
#9000
2800
4000

TRAP AREA



Luther

NOTE: Construction Record for this project is shown on pages 102 to 106 inclusive.

LAT. 36, S.S. No 20
UTILITY CONTR. INC.
BK. No JF. 70, PROJ. No C22-52
NOV. 1952

2004-00147, 116104
1608 E Luther - Padgett Ex
71.6' W of MH - tied back to
wire w/donut, twins co
New trap, 2000,
4" SCH 40 PK 17 1/4" GAL

see I-82

See page 107 for this map

CONSTRUCTION RECORD

SERVICE RECORD

LINE NO.

STATION	ELEVATION		Depth	MANHOLE	4-INCH "Y" BRANCHES		No. of Permit		House Number		DATE OF PERMITS		
	Ground	Grade			North West	South East	North West	South East	North West	South East	North West	South East	
7+0													
8+0	94.8	89.12	5.7	7+81.4	7+90.0	7+93.0	#5222		1502 Amersden			5-15-53	
9+0	95.0	89.14	5.9		8+74.4	8+77.7	#5221		1426 Amersden			5-15-53	
10+0	95.0	89.24	5.8		9+58.5	9+61.5	#5040		1509 Wassall			5-2-53	
11+0	95.2	89.34	5.9		10+37.5	10+40.5	#5041		1501 Wassall			5-2-53	
12+0	95.4	89.39	6.0	10+48.7					1425 Wassall			5-2-53	
13+0	95.4	89.44	6.0		11+25.2	11+28.2	#5142					5-2-53	
14+0	94.6	89.54	5.1		12+12.7	12+15.7							
15+0	94.4	89.64	4.8	12+99.2	+79.4	+82.4	#5191		1501 Amersden			5-12-53	
16+0	94.8	89.74	5.1		13+64.1	13+67.1	#5186		1321 Wassall			5-12-53	
17+0	95.2	89.84	5.4		14+47.5	14+50.5							
18+0	94.7	89.92	4.8	15+74.2									
19+0	94.1	88.59	5.5	0+00 = 2+59.7 in Line 10									
20+0	94.3	88.70	5.6		1+63.1	1+66.1	#4797	#4796	1504 Amersden	1526 Salome		4-14-53	4-14-53
21+0	94.6	88.80	5.8										
22+0	94.6	88.86	5.7	2+61.5	2+68.7	2+71.7							
23+0	94.7	88.90	5.8		3+45.0	3+48.0							
24+0	95.1	89.00	6.1		4+28.6	4+31.6		#5400	1502 Salome			6-1-53	
25+0	95.2	89.10	6.1		5+14.5	5+17.5	#5338	#5399	1425 Amersden	1426 Amersden		5-25-53	6-1-53
26+0	95.2	89.13	6.1	5+24.1	5+29.3		5339	1419 Amersden				5-25-53	
27+0	95.0	89.20	5.8		6+80.9	+83.9							
28+0	94.7	89.30	5.4		7+65.7	7+68.7	#5342	#5395	1328 Amersden	1326 R Salome		5-25-53	12/21/03
29+0	94.4	89.40	5.0	7+99.5								6-1-53	
30+0	94.1	89.50	4.6		8+50.3	8+53.3	#5343	#5394	1307 Amersden	1320 Salome		5-25-53	6-1-53
31+0	94.2	89.60	4.6		9+34.6	9+37.6							
32+0	94.2	89.65	4.6	10+50.4									
33+0	95.6	87.50	8.1	0+00 = 0+00 in Line 1	Y West 0+25.3	Y East 0+22.3	#1144	#2707	2944 Amersden	2939-41 Amersden		6-9-54	11-23-54
34+0	94.2	87.60	6.6		1+41.1	1+44.1	#1143	#2706	2940 Amersden	2933-35 Amersden		6-9-54	11-23-54
35+0	94.1	87.70	6.4		2+02.2		#1142	#2705	2940 Amersden	2927-29 Amersden		6-9-54	11-23-54
36+0	94.1	87.73	6.4	2+30.4				#2704	2931-23 Amersden			2-25-54	11-23-54
37+0	94.3	87.80	6.5					#2703	2931 R Amersden			6-9-54	11-23-54
38+0	94.3	87.90	6.4		2+68.6			#2702	2915-17 Amersden			11-23-54	11-23-54
39+0	94.4	87.94	6.5	4+43.1					2909-11 Amersden				
40+0	94.5	88.00	6.5										
41+0	94.5	88.10	6.4										
42+0	94.5	88.16	6.3	6+52.4	Y North 6+78.3	Y South 6+14.8							
43+0	94.7	88.20	6.5		7+38.8								
44+0	94.2	88.30	5.9		8+03.0								
45+0	94.2	88.34	5.9	8+44.7									
46+0	94.3	88.40	5.9										
47+0	93.9	88.50	5.4		10+15.6	10+18.6	#4795	#3881	1527 Salome	1522 Salome		4-14-53	1-27-53
48+0	94.6	88.60	6.0	10+99.7	+94.4		#5515		1521 Salome			6-10-53	
49+0													
50+0													
51+0													
52+0	94.5	88.70	5.8		12+15.4	12+18.4	#5517	#3878	1507 Salome	1508 Salome		6-10-53	1-27-53
53+0	94.2	88.80	5.4		+76.1	+79.1	#5518	#3877	1507 Salome	1502 Salome		6-10-53	1-27-53
54+0	94.8	88.87	5.9	13+64.6	13+36.0	13+39.0	#5519	#3876	1427 Salome	1426 Salome		6-10-53	1-27-53
55+0	95.0	88.90	5.5		14+58.4	14+61.4		#3048	1426 Salome			1-27-53	
56+0	94.5	89.00	5.5		15+19.1	15+22.1		#3047	1408 Salome			10-30-52	
57+0	94.2	89.10	5.1					#3046	1402 Salome			10-30-52	
58+0	94.2	89.13	5.1	16+25.1	16+42.5	16+42.5		#3045	1326 Salome			9-28-52	10-30-52
59+0	94.3	89.20	5.1		17+01.2	+64.5		#3049	1320 Salome			10-30-52	
60+0	94.2	89.30	4.9		18+86.3	18+19.2	#4608	#3043	1301 Salome	1308 Salome		3-25-53	10-30-52
61+0	94.0	89.40	4.6	18+98.5	+89.3		#6268	#3042	1302 Salome	1302 Salome		8-24-53	9.A. Smith

This project continues on page 106

Tap - 1401 Wassall - #5045 - G.A. Smith 5-4-53
 Tap - 1327 Wassall - #5186 - G.A. Smith 5-12-53
 Tap - 1307 Wassall - #5188 - G.A. Smith 5-12-53
 Tap - 1419 Salome - #5520 - G.A. Smith 6-10-53
 Tap - 1409 Salome - #5521 - G.A. Smith 6-10-53
 Tap - 1321 Salome - #5524 - G.A. Smith 6-10-53
 Tap - #4609 - 1302 Salome - 3-25-53 - G.A. Smith

#5223 - Tap - 1508 Amersden - 5-16-53 - G.A. Smith
 #5224 - Tap - 1514 Amersden - 5-16-53 - G.A. Smith
 #5225 - Tap - 1520 Amersden - 5-16-53 - G.A. Smith
 #5334 - Tap - 1521 Amersden - 5-25-53 - G.A. Smith
 #5335 - Tap - 1515 Amersden - 5-25-53 - G.A. Smith
 #5336 - Tap - 1509 Amersden - 5-25-53 - G.A. Smith
 #5340 - Tap - 1409 Amersden - 5-25-53 - G.A. Smith
 #5346 - Tap - 1307 Amersden - 5-25-53 - G.A. Smith
 #5516 - Tap - 1515 Salome - 6-10-53 - G.A. Smith
 #6269 - Tap - 1307 Salome - 8-24-53 - G.A. Smith

- # 6964 - top - 2855 J. Hydraulic - 11-29-55 - Collected Ollip. & Skattig
- # 4788 - ²⁰⁰²⁻⁰⁰⁸⁴³ Dup - 1302 Amosden^R - 4-13-53 - H.A. Smith - Rob Rooter - 4" SCH40 17WIXO
- # 4789 - Dup - 1301 Amosden - 4-13-53 - H.A. Smith
- # 4800 - Dup - 1301 Wassall - 4-14-53 - H.A. Smith
- # 5189 - Dup - 1308 Amosden - 5-12-53 - H.A. Smith
- # 5190 - Dup - 1314 Amosden - 5-12-53 - H.A. Smith
- # 5192 - Dup - 1326 Amosden - 5-12-53 - H.A. Smith
- # 5341 - Dup - 1401 Amosden - 5-25-53 - H.A. Smith
- # 5344 - Dup - 1315 Amosden - 5-25-53 - H.A. Smith
- # 5337 - Dup - 1501 Amosden - 5-25-53 - H.A. Smith
- # 5193 - Dup - 1402 Amosden - 5-12-53 - H.A. Smith
- # 5187 - Dup - 1315 Wassall - 5-12-53 - H.A. Smith
- # 5038 - Dup - 1521 Wassall - 5-2-53 - H.A. Smith
- # 5039 - Dup - 1515 Wassall - 5-2-53 - H.A. Smith
- # 5083 - Dup - 1419 Wassall - 5-4-53 - H.A. Smith
- # 5084 - Dup - 1409 Wassall - 5-4-53 - H.A. Smith
- # 5085 - Dup - 1401 Wassall - 5-4-53 - H.A. Smith
- # 5086 - Dup - 1327 Wassall - 5-4-53 - H.A. Smith
- # 5522 - Dup - 1401 Salome - 6-10-53 - H.A. Smith
- # 5523 - Dup - 1327 Salome - 6-10-53 - H.A. Smith
- # 2360 - - 1610-19-14-16 Jump - 10-26-54 Callison Rellig
- # 2361 - - 1620-22-24-26 Jump - 10-26-54 Callison Rellig
- # 2362 - - 1630-32-34-36 Jump - 10-26-54 Callison Rellig
- # 2363 - - 1640-42-44-46 Jump - 10-26-54 Callison Rellig
- # 2701 - Sep - 1525 - 27 Jump - 11-22-54 Reynolds Plmbg.