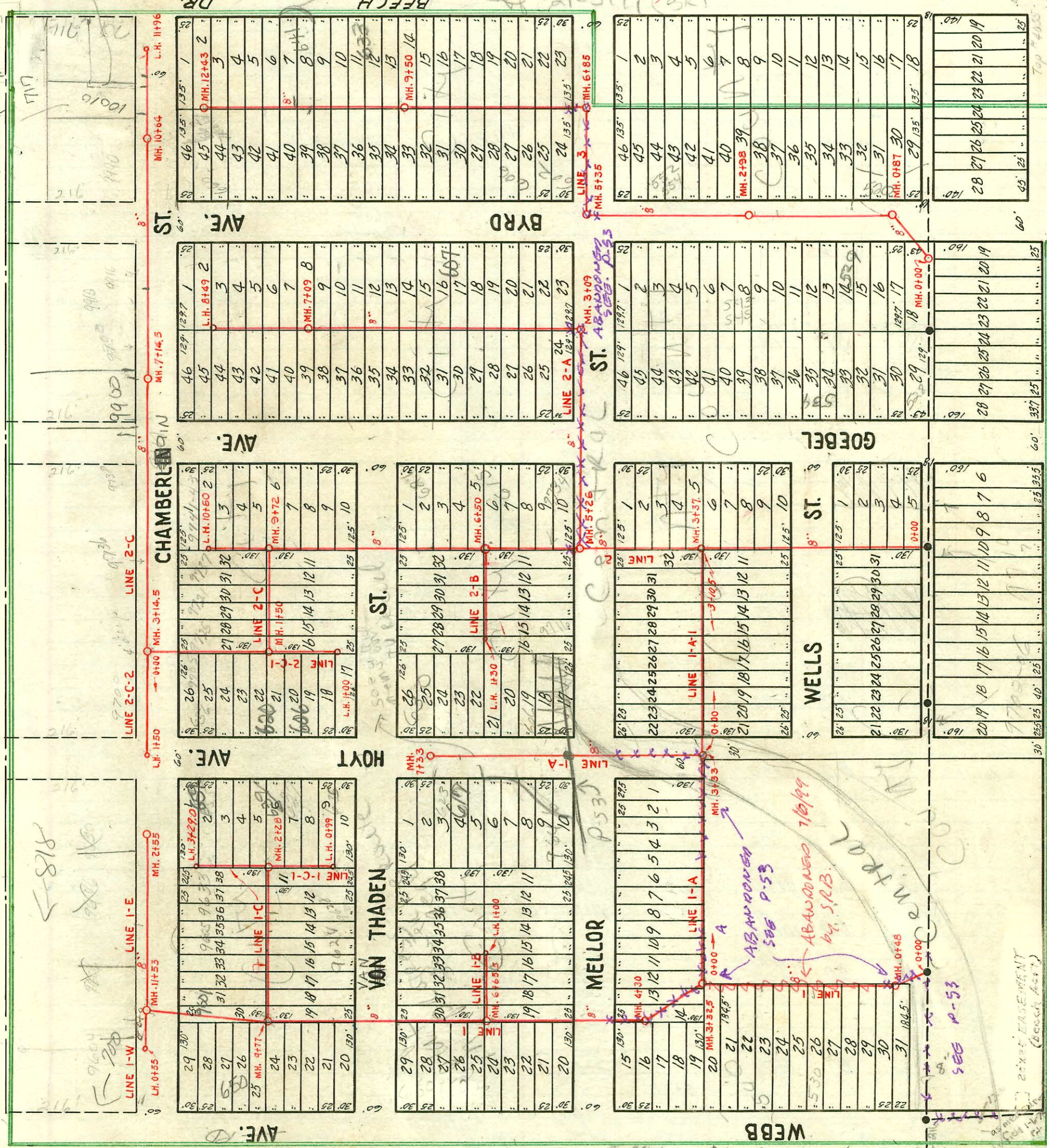


Boundary change Oct. 1967  
10000 = Chamberlain  
At white emerald  
5000 alum emerald  
STILL TO BE RECORDED  
Scale 1" = 150'

NOTE: 6" wyes must be trapped

Ownership transferred to City of Wichita



- # 4734 - 2nd - 9633 Chamberlain - 4-7-53 - Callison Ply. Co
- # 5287 - setting wye - 9603 Chamberlain - 5-20-53 - Jeff O'Fly C
- # 5450 - 2nd - 639 Hoyt - 6-2-53 - Joe Mc Donald
- # 5557 - setting wye - 9717-23 Webb - 6-15-53 - J Douglas
- # 6487 - 4248 - 4248 - 4249 - trailer comm & land use - 9-21-53 - 602 Webb
- # 136, 137, 138, 139, 140, 141, 142 - board wye - 620 Goebel - 2-19-54 - Joe Mc Donald
- # 1353 - 9738 Chamberlain - 6-30-54 - Joe Mc Donald
- # 3712 - 9601 E. Chamberlain - 6-30-54 - Joe Mc Donald
- # 4638 - 39-4041-42 - Trailer - 9721 Von Thaden - Joe Mc Donald Ply.
- # 5314 - Top - 9420 Von Thaden - 7-20-54 - Joe Mc Donald
- # 5815 - 9928 Von Thaden - 7-27-54 - Joe Mc Donald
- # 1648 - 10506 Chamberlain - 10-1-65 - Joe Mc Donald
- # 2828 - 6 on 8 wye - 655 W Webb - 12-2-54
- # 2910 - 6 on 8 wye - West side - 601 - 13-16-54
- # 4711 - 6 on 8 wye - 601 - 13-16-54
- # 6579 - 2624 Hoyt - West side
- # 7102 - 973840 Chamberlain - West side
- 6064 - 5289 Goebel - 12-22-54
- 10892 - 6 on 8 wye - 2-3-54
- 37 - Hoyt - 7-20-54
- 16+76

5-60 Goebel - O. K. 9-22-53

510 2002-02131-87102  
650 NW Webb - A Henning  
109.5 of MH 11753 (10744)  
510 W concrete

TRAP AREA

PRIVATE SANITARY SEWER IN MINNEHA TOWNSHIP 1949 Booked Dec. 8, 1952 Designed by F. E. DEVLIN - CONSULTING ENG.



2003-03070-11/21/03-717<sup>3/0</sup> N Beech - Reddi Rootr - Capped by trailer before wye 10020 Chamberlain -  
2 Fernco caps on ABS

2001-00180-1/25/01-711 N Beech - RDCampbell - 4" SCH 40 - Clay tile, Tied back to tile in ditch - 2 - Iwayco,  
1TWIN CO, 1H22, 3H45

2002-00905-4/1/02-620 N Hoyt - WB Carter - 4" 40 PVC - 70.6' S of MH 0108 (78.6) 2V45, Fernco  
10' from main, Fernco @ house

2002-00904-4/1/02-606 N Hoyt - WB Carter - 1-6" fernco 10' from main, 40' W of MH 1100 (1140) 2V45, 6x4 Fernco  
@ house, 6" SCH 40, shallow, 4" 40 PVC

R- 2000-01012-4/25/00-529 N BYRD ST - WICHITA EXC (in Sedgwick co, served by city sewer)  
4" SCH 40 - Tied to private line, Trap installed, 1-TWIN CO + 1 V45