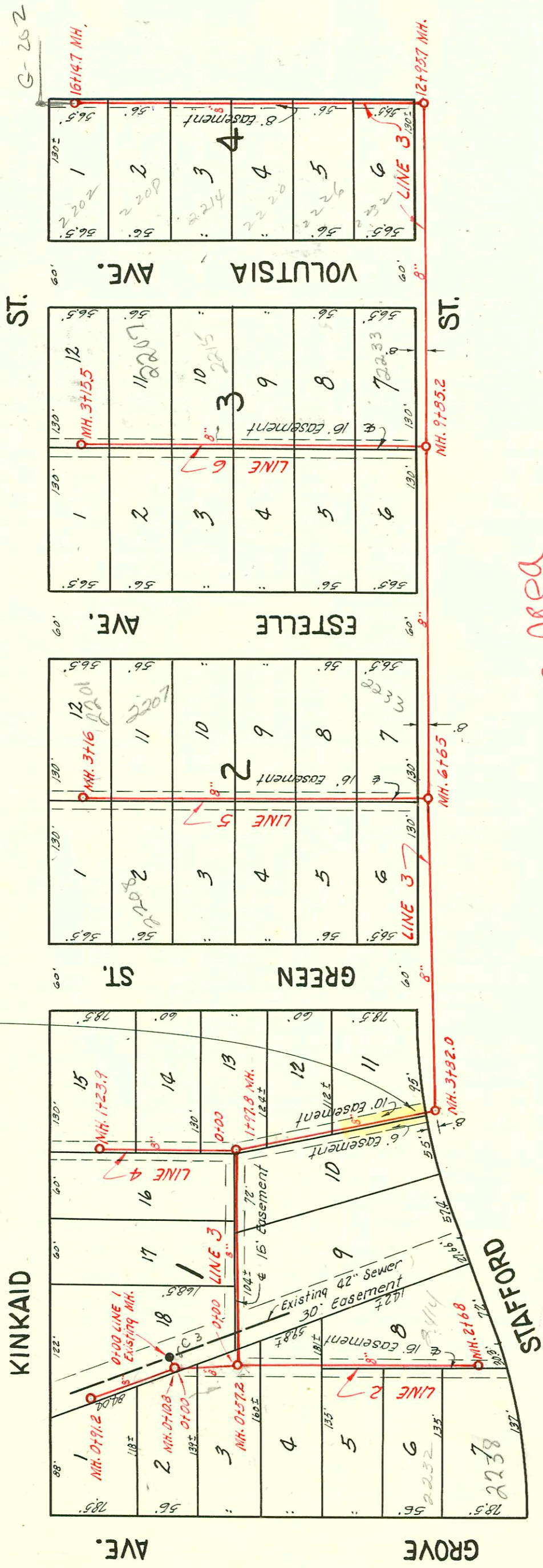


EASEMENT # 2712, Made Nov. 1, 1952, from Charles L. and Laurel Louis. The east six (6) feet of the south eighty-six (86) feet of lot 10 and the west ten (10) feet of lot 11, all in Block 1 of Heinrich Addition to the City of Wichita, Sedgewick County, Kansas.



TRAP AREA

NOTE:

6" Wyes

6" wyes must be trapped with 6" Traps.

LAT. 7, S. S. 12

W. B. CARTER

BK. JT. 60, PROJ. NO. C22-87

Booked Dec. 20, 1952

CONSTRUCTION RECORD

SERVICE RECORD

LINE NO.

LINE NO.	STATION	ELEVATION		Depth	MANHOLE	4-INCH "Y" BRANCHES		No. of Permit		House Number		DATE OF PERMITS		
		Ground	Grade			North West	South East	North West	South East	North West	South East	North West	South East	
1.	0+0		89.58 89.62 out 89.79 in		0+0 Existing MH. 0+10.8	0+20.0 +77.6		#4595 #4594		2308 2302 2301		3-25-53 3-25-53		
		97.0	89.87	7.1	0+91.2									
2.	0+0		89.79		0+0 = 0+10.8 in Line 1	0+36.6		#4596		2314 2308		3-25-53		
		96.4	89.85	6.6	0+57.2	0+90.5		#4597		2320 2322		3-25-53		
	1+0	96.2	89.89	6.3		1+45.3		#4598		2326 2328		3-25-53		
							1+69.6	#4601		2414 2332	2414 See Below		1-22-02 3-25-53	3-25-53
	2+0	96.1	89.99	6.1		2+02.6 +57.0		2002-00189 #4599 #4600		2332 2334 2336		3-25-53		
3.	0+0	96.4	90.45	6.0	0+0 = 0+57.2 in Line 2	0+54.8		#4604		2501 2502		3-25-53		
						0+75.9		#4602		2507 2508		3-25-53	3-25-53	
	1+0	96.7	90.55	6.1		1+45.2		#4605	#4603	2513 2515		3-25-53	3-25-53	
		96.3	90.75 in 90.64 out	5.6 5.7		1+57.2		#4606		2515 2517		3-25-53		
	2+0													
4.	3+0	96.1	90.85 out 91.03 in	5.3 5.2		3+82.0								
	4+0	95.8	91.05	4.7										
	5+0	96.2	91.15	5.0										
	6+0	97.6	91.25	6.3										
		98.7	91.32	7.4		6+65.0								
	7+0	98.6	91.35	7.2										
	8+0	98.6	91.45	7.1										
	9+0	98.8	91.55	7.2										
		98.8	91.64	7.2		9+85.2								
	10+0	98.8	91.65	7.2										
	11+0	98.7	91.75	7.0										
	12+0	98.8	91.85	7.0										
		99.3	91.96 out 92.03 in	7.4 7.3		12+95.7								
	13+0						13+18.3 +79.0							
	14+0	99.5	92.15	7.3		14+36.8 +91.5								
15+0	99.6	92.25	7.3		15+42.8									
16+0	99.2	92.35	6.8		16+03.8									
	99.1	92.37	6.7		16+14.7									
4.	0+0	96.3	90.75	5.5	0+0 = 1+97.8 in Line 3			#4495		2207 2208		3-18-53		
	1+0	96.2	90.85	5.4				#4494	2003-00213	2201 Screen	See Below	1-22-02 3-18-53		
		96.0	90.88	5.1		1+23.9								
5.	0+0	98.7	91.41	7.3	0+0 = 6+65 in Line 3	0+29.0	0+26.0 ok	#3578	92-2540-7 #3584	2232 2233 2234	2233 Estelle	12-22-52	2-24-92 12-22-52	
						+86.6	+83.6	#3579	#3585	2235 2236	Estelle	12-22-52	12-22-52	
	1+0	98.1	91.52	6.6		1+42.6	1+38.6	#3580	#3586	2237 2238	Estelle	12-22-52	12-22-52	
						+96.4	+93.4	#3581	#3587	2239 2240	Estelle	12-22-52	12-22-52	
	2+0	97.8	91.62	6.2		2+54.0	2+51.0	#3582	#3588	2241 2242	Estelle	12-22-52	12-22-52	
3+0	97.6	91.74	5.9		3+08.5	3+05.5	#3583	#3589	2243 2244	Estelle	12-22-52	12-22-52		
6.	0+0	98.8	91.73	7.1	0+0 = 9+85.2 in Line 3	0+28.7	0+25.7	#3687	#3689	2235 2236	Estelle	1-6-53	1-27-53	
						+83.9	+80.9	#3686	#3690	2237 2238	Estelle	1-6-53	1-27-53	
	1+0	98.7	91.84	6.9		1+41.0	1+38.0	#3685	#3691	2239 2240	Estelle	1-6-53	1-27-53	
						+95.8	+92.8	#3684	#3692	2241 2242	Estelle	1-6-53	1-27-53	
	2+0	98.7	91.94	6.8		2+54.1	2+51.1	#3683	#3693	2243 2244	Estelle	1-6-53	1-27-53	
	3+0	98.0	92.04	6.0		3+05.0	3+02.0	#3682	#3694	2245 2246	Estelle	1-6-53	1-27-53	
	98.0	92.06	5.9		3+15.5									

2003-00213-1122103-2201 S Green - Kansas Ditching - City Wye inspection - 6" Wye good - 4" PVC, 1 twin co, New house trap, 4H22 (on Mswit)

2002-00189-1122102-2232 S Grave - Sam Bangle - tied back to clay tap prx 4' from main - twin co, New trap, 4" sch 40 PVC, 1/4" fall

Owned property checked asset in trap area on 8/21/91

Said person cleaning line needed to know. Has opened day

#2465 9/20/56 2817 Kincaid - tap (6202) - Repair 2002-01703-6/18/02 - Reddi Roof - 4" PVC

1 twin co, 1H22, 1H45