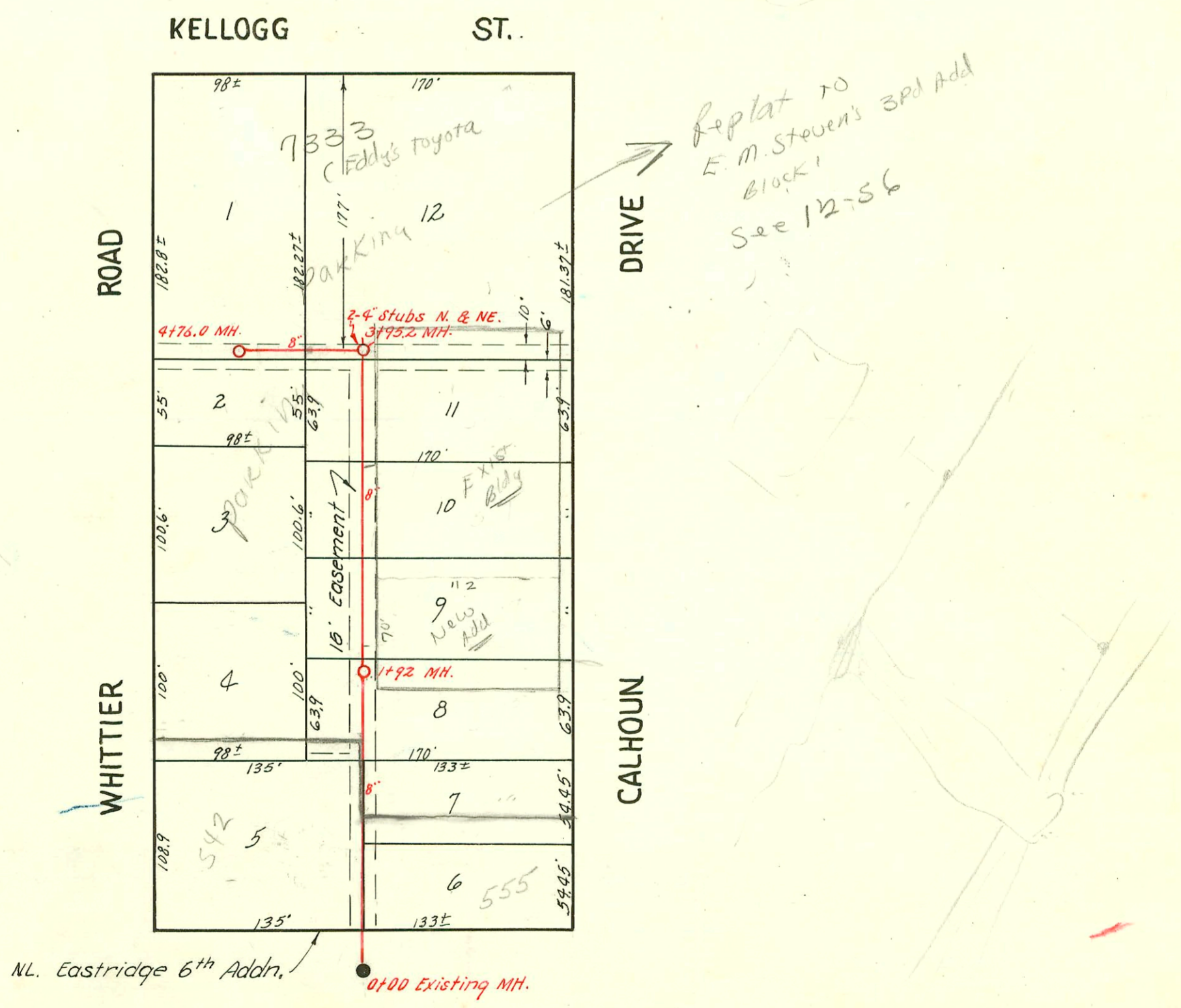


LAT. 5, DIST. 13, S.S. 12
 W. B. CARTER
 BK. NO. JF. 60, PROJ. NO. C22-88
 Booked Dec. 23, 1952



Replat to
 E. M. Steven's 3rd Add
 Block
 See 12-56

#24985-3-20-90-7333 E. Kellogg - newcom - McCullough (2701.5 TAP) **LAT. 3, SUB. 5, W. I. S.**
 W. B. CARTER - JAN. 1953
 BK. JF. 60, PROJ. NO. C22-55
 1-30-53

CONSTRUCTION RECORD

SERVICE RECORD

LINE NO.

LINE NO.	STATION	ELEVATION		Depth	MANHOLE	4-INCH "Y" BRANCHES		No. of Permit		House Number		DATE OF PERMITS	
		Ground	Grade			North West	South East	North West	South East	North West	South East	North West	South East
1.	0+0	167.7	162.40	5.3	0+00 New MH								
	1+0	169.9	162.80	7.1									
	2+0	172.4	163.20	9.2									
		174.6	163.45 out 165.45 in	11.1 9.1	2+69.5	2+98.5	#3620		3111 Arlene		12-29-52		
	3+0	175.4	165.60	9.8		3+56.0	#3621		3117 Arlene		12-29-52		
	4+0	177.3	166.00	11.3		4+01.0							
		177.5	166.13	11.4	4+32.0								
2.	0+0	174.6	163.72	10.9	0+00 = 2+69.5 in Line 1	WEST	EAST						
						0+17.0		#3618	2430 N. Lorraine		12-29-52		
						+76.5		#3619	2436 N. Lorraine		12-29-52		
	1+0	172.8	164.10	8.7				#26346	2442 N. Lorraine	2443 Bernal	10/19/90	1-14-98 (see below)	
	2+0	174.3	164.50	9.8		2+06.2	2+03.2	#3595	#3615	2448 N. Lorraine	2449 Bernal	12-22-52	12-29-52
		175.2	164.68 out 166.00 in	10.5 9.2	2+43.5	+66.7	+63.7	#3596	#3616	2448 N. Lorraine	2449 Bernal	12-22-52	12-29-52
	3+0	176.4	166.22	10.2		3+20.8	3+17.8	#3597	#3617	2454 N. Lorraine	2455 Bernal	12-22-52	12-29-52
		177.1	166.34	10.8	3+30.5								
3.	0+0	175.2	167.98	7.2	0+00 = 2+43.5 in Line 2		SOUTH						
	1+0	176.6	168.40	8.2			1+63.1						
	2+0	178.4	168.80	9.6									
		180.1	169.04 out 170.02 in	11.0 10.1	2+65.6				19024	2489 N. Hillside		9-10-87	
						WEST	EAST						
	3+0	180.2	170.13	10.1		3+43.4	3+40.4	#3988	#3987	2454 N. Hillside	2455 Bernal	2-2-53	5-26-88
		181.2	170.42	10.8	3+71.8								

4" Wyes
Y West Y East

0+0	158.0	147.05	11.0	0+00 Existing MH.									
						0+77.5		#5996	540 Hillside		1-8-53		
								13482	549 Hillside		3-30-78		
1+0	156.8	147.15	9.7			0+83.7		#3995	549 Hillside		6-23-53		
		153.3	147.24	8.1	1+92.0	1+45.4	1+42.4				4-16-85		
2+0	155.3	147.25	8.0			2+05.2		#62526	537 Hillside		8-11-77		4-24-73
						2+69.0	+66.0	#3994	520 Hillside		1-3-53		11-23-53
3+0	154.2	147.35	6.8			3+26.7							
						3+50.6		#13789	937 E. Kelley		11-1-77		
4+0	153.8	147.45 out 147.64 in	6.3 6.2	3+95.2	(2-4" Stubs N. & NE)	Y North		#3992	730 E. Kelley		1-3-53		
						4+28.2		#11894	730 E. Kelley		5-21-73		
						4+63.8		#1185	730 E. Kelley		7-11-89		
	155.3	147.73	7.6	4+76.0				#15702	730 E. Kelley		9-2-69		

C73042 24397 Hillside R 7-18-79
 C60107-7307 C. Kelley #2 - 2-28-77 (2+05.0)
 C60108-7307 C. Kelley #2 - 2-28-77 (3+20)

H93-005-7 - 1/14/93 - R - 4" Coex ABS Sch 40 - Tied on to 6" Clay tile 2 ft off main.

4398 - Top - 2459 N. Hillside - 3-9-53 - Jones Alley
 # 4818 - Top - 2455 N. Hillside - 4-14-53
 C39102 # 4943 - Top - 2307 E. Kelley - 4-24-53 - Simmons Alley Co - 5-21-73 Al Henning, (Sealed at M.H.)
 C38473 # 6679 - Top - 531 Calhoun - 10-12-53 - Reynolds Alley Co., Inc - 4-24-73 - Al Henning (2+58.5)
 # 7008 - Top into m. H. 4+32.0 - 2483 N. Hillside - 11-18-53. Art Prosser
 C38472 # 5964 - Top - 519 Calhoun - 7-29-53 - Simmons Alley Co - 4-24-73 - Al Henning (3+47.8)
 # 1181 - Top - 555 Calhoun - 6-23-54 - South Plumb and Alley