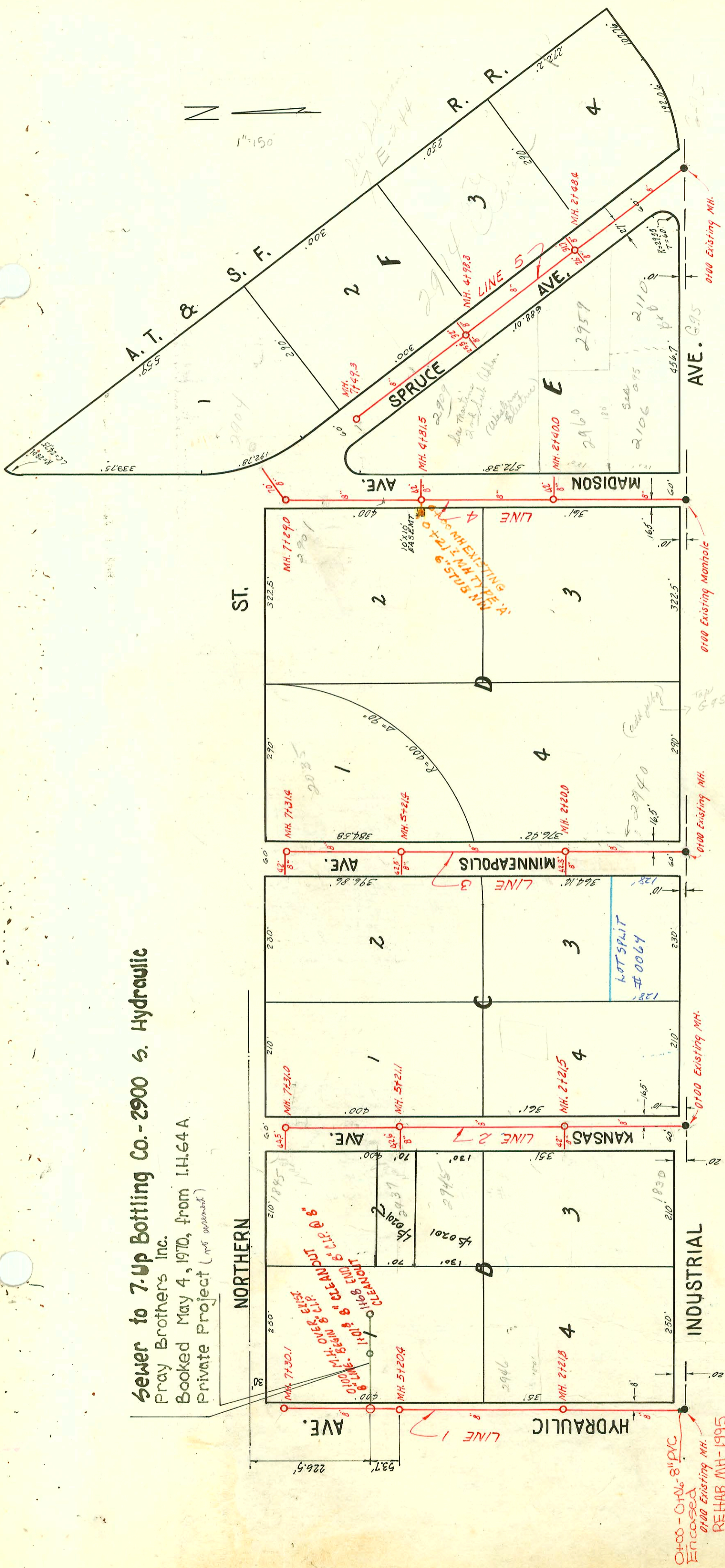


Sewer to 7-Up Bottling Co. - 2900 S. Hydraulic
 Pray Brothers Inc.
 Booked May 4, 1970, from I.H.64A
 Private Project (see agreement)



TRAP AREA

6" WYES
 6" wyes must be trapped with 6" traps.

1995 SANITARY SEWER REHABILITATION
 PROGRAM - PHASE II
 PROJ. NO. N/A (G21060)
 BUILT BY W.B. CARTER CONST. CO.
 BOOKED 2-16-96 FROM AS BUILTS

LAT. 33, S. S. No 20
 UTILITY CONTRACTORS INC.
 BK. JI. 66, PROJ. NO. C21-49
 Dec. 24, 1952

SEARS ROEBUCK & CO. SS
 MIDSTATES CONST CO.
 PROJ. NO. D84W 704059
 BOOKED 8-10-77 FROM SRL3

CONSTRUCTION RECORD

SERVICE RECORD

LINE NO.

STATION	ELEVATION		Depth	MANHOLE	4-INCH "Y" BRANCHES		No. of Permit		House Number		DATE OF PERMITS	
	Ground	Grade			North West	South East	North West	South East	North West	South East	North West	South East
1. 0+0	95.90	88.34	7.6	0+00 Existing MH.								
1+0	93.4	88.44	5.0			4"						
2+0	93.3	88.54	4.8			1+01.0						
	93.4	88.56	4.8	2+21.8								
3+0	93.7	88.64	5.1			6"						
4+0	94.3	88.74	5.6			3+02.0						
5+0	94.6	88.84	5.8			4+10.0						
	94.3	88.86	5.4	5+20.4		6"						
6+0	94.3	88.94	5.4			5+95.9						
7+0	94.5	89.04	5.5									
	94.1	89.07	5.0	7+30.1								
2. 0+0	93.4	87.82	5.6	0+00 Existing MH.	7+033.0 TAP		19432		1830 Industrial		10-30-87	
1+0	93.9	87.92	6.0		1+59.5	6"	C10043		1830 Industrial		8-16-68	
2+0	94.1	88.02	6.1			1+06.0						
	94.1	88.04	6.1	2+21.5	42.0' of 8" Lead W.	6"	19452	5896	1830 Industrial	1951 Kansas	10-30-87	12-16-57
3+0	93.1	88.12	5.3			3+07.9						
4+0	92.9	88.22	4.7			4+47.0						
5+0												
	92.8	88.34	4.5	5+21.1	42.6' of 8" Lead W.	6"	C46520		2945 S. Kansas		9-6-74	
6+0	92.9	88.42	4.5			6+00.0	#2260		2937 S. Kans.		9-10-52	
7+0	93.7	88.52	5.2									
	94.1	88.55	5.6	7+31.0	44.5' of 8" Lead W.		#4734		1845 Northern		5-11-55	
3. 0+0	92.8	87.32	5.5	0+00 Existing MH.								
1+0	93.1	87.42	5.7			6"						
2+0	93.2	87.52	5.7			1+36.0	#4121		8940 S. Minneapolis			March 20-57
	93.1	87.54	5.6	2+20	42.8' of 8" Lead W.	6"	#1203				6-21-54	
3+0	93.1	87.62	5.5			3+02.0						
4+0	93.3	87.72	5.6			4+40.5						
5+0	94.1	87.82	6.3									
	94.1	87.84	6.3	5+21.4	42.5' of 8" Lead W.							
6+0	93.9	87.92	6.0			6+03.4						
7+0	93.7	88.02	5.7			7+13 ±	JOP #2600		2035 Northern		4-7-67	
	93.8	88.05	5.7	7+31.4	42.0' of 8" Lead W.							
4. 0+0	93.0	86.68	6.3	0+00 Existing MH.								
1+0	93.2	86.78	6.4			6"						
2+0	93.0	86.88	6.1			1+02.0						
	93.3	86.92	6.4	2+40.0		42-8" lead E.						
3+0	93.4	86.98				6"						
4+0	94.3	87.08	7.2			3+11.0						
	94.5	87.16	7.3	4+81.5		4+14.4						
5+0	94.5	87.18	7.3			6"						
6+0	93.4	87.28	6.1			42" of 8" lead E.						
7+0	93.6	87.38	6.2			5+51.0						
	93.7	87.41	6.3	7+29.0		70" of 8" lead E	#167		2904 S. Spruce		3-7-56	
5. 0+0	94.3	86.08	8.2	0+00 Existing MH.								
1+0	90.3	86.18	8.1									
2+0	93.5	86.28	7.2									
	93.3	86.33	7.0	2+48.4	26.0' of 8" lead W.	31.7' of 8" lead E.	C3264		2934 S. Spruce		8-15-72	
3+0	93.1	86.38	6.7									
4+0	93.6	86.48	7.1									
	93.7	86.58	7.1	4+98.3	25.5' of 8" lead W.	32.0' of 8" lead E.	4211		2929 S. Spruce		3-27-57	
5+0							C24981		2909 S. Spruce		6-24-71	
6+0	94.0	86.68	7.3			6"						
7+0	94.3	86.78	7.5			6+50.0						
	94.3	86.83	7.5	7+49.3								
7-UP Bottling Co.												
	99.9	95.20	4.7	0+00 MH.	8" Y N.							
					0+18"							
					4" Y N.							
					0+79"							
1+00	101.1	95.90	5.2		1+01" 8" c.o.							
						6" Y S.						
						1+02"						
						6" Y S.						
						1+44"						
#19064	101.2	96.41	4.8	1168" 8" c.o.	8" Y N.							
C-3025					1166"							
					LINE TURNS INTO BUILD'G.							

#7053 - Setting wye - 2900 S. Hydraulic - 11-24-53 - Kendall Ply. Co.
 #119 - setting wye - 2901 S. Madison - 2-17-54 - Moore Robtson Ply. Co.
 #3401 - set 6" on 8" wye - 1929 Northern - Simmons Ply. - 12-27-56
 #3706 - 1929 S. Northern - Simmons - 2-12-57
 #15471 - 2901 S. Madison - 10-29-74 (Mid-States) (New 21" M.H.)