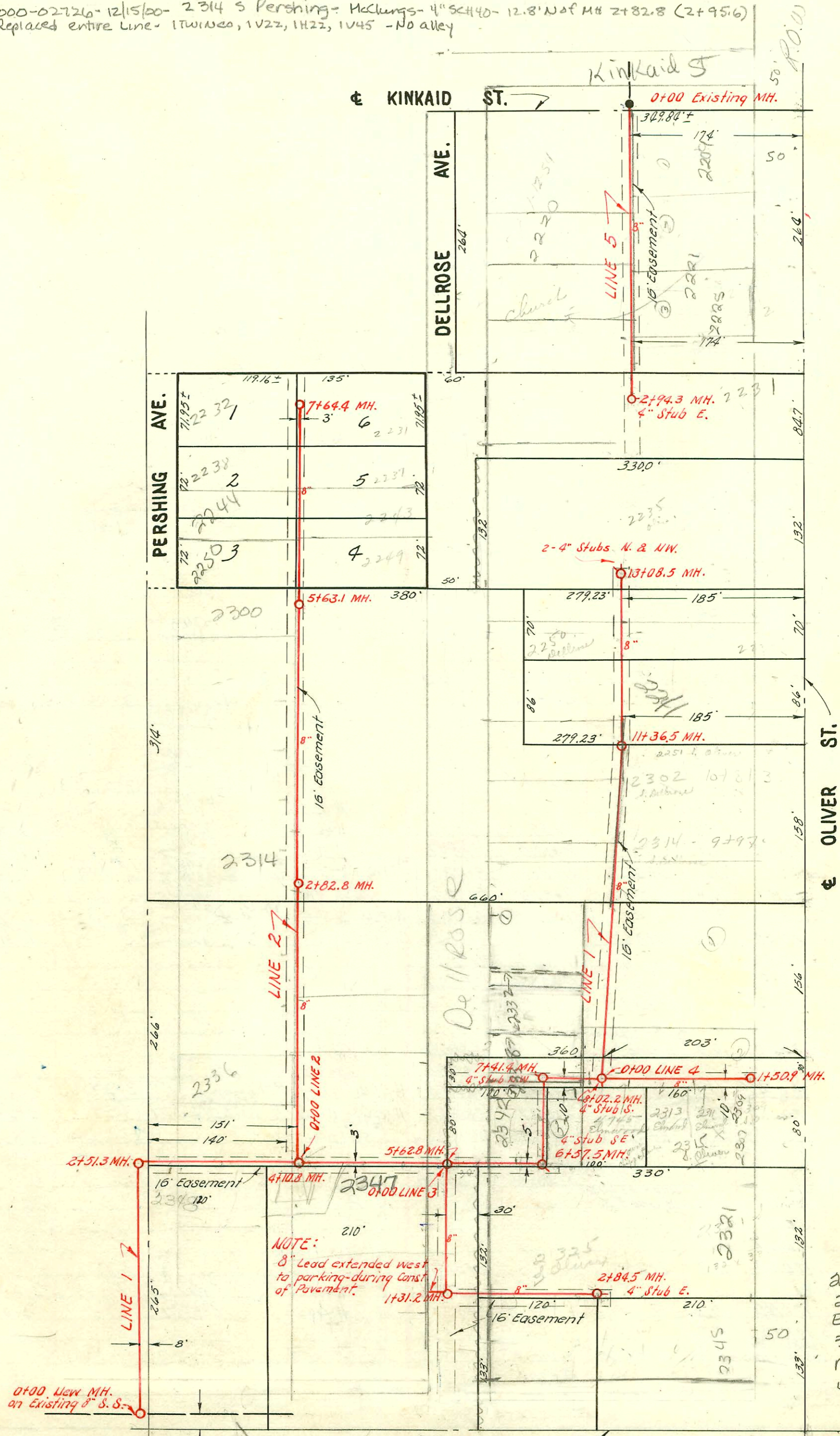


at 100 R 2000-01958-2250 S Pershing - Lubbers -
at 100 R 2000-01959-2244 S Pershing - Lubbers

2000-02726-12/15/00-2314 S Pershing - McClung - 4" SCH40 - 12.8' N of MH 2+82.8 (2+95.6)
Replaced entire line - 1W120, 1V22, 1H22, 1V45 - No alley



NOTE:
8" lead extended west
to parking during const.
of pavement.

2002-02199-8173102
2347 S Dellrose - Wichita
Exc - 4" PVC - 12W120,
3H22, 1V22, city wye
repair 30' E of MH
4+10.8 (4+40.8) shallow

B# 6594 2221 S. Oliver (church) 9-22-02
#7665 1st bond wye - 2221 S. Oliver (church) shipped 8-11-58 (2+87.3
B1376-top-2227 S. Oliver - at Henning - 6-8-64 (0+25)
HB679-2311 to Oliver down p.lly. 1-15-64

LAT. 3, SUB. 4, W. I. S.
W. B. CARTER - JAN. 1953
BK. JF. 65, PROJ. NO. C22-51

Benefit Dist. include all area shown west of
E Dellrose Ave. extended south to Pawnee.
0+00 to 5+62.8 Line 1.
All of Line 2.

LAT. 2, SUB. 4, W. I. S.
W. B. CARTER - JAN. 1953
BK. JF. 65, PROJ. NO. C21-41

Benefit Dist. include all area shown east of
E Dellrose Ave. extended south to Pawnee.
5+62.8 to 13+08.5 Line 1
All of Lines 3, 4 and 5.

CONSTRUCTION RECORD

SERVICE RECORD

STATION	ELEVATION		Depth	MANHOLE	4-INCH "Y" BRANCHES		No. of Permit		House Number		DATE OF PERMITS	
	Ground	Grade			North West	South East	North West	South East	North West	South East	North West	South East
0+0	123.1	116.00	7.1	0+00								
1+0	122.7	116.40	6.3									
2+0	123.5	116.80	6.7									
3+0	124.5	117.23 out	7.3	2+51.3								
4+0	124.4	117.40	5.7		3+108.0		17345		2342		11-21-86	
5+0	124.4	117.80	6.6	4+10.8			5998		4416		8-12-55	
6+0	128.2	118.20	10.0		3+34.9		#5444		2342		6-2-53	
7+0	131.0	118.45 out	12.6	5+62.8	4" PVC. S.W. 1/4	6+02.8			2337			
8+0	131.4	121.83 out	9.6		6+32.5	6+29.5	9624897	(30890)	2342		3-29-96	3-7-72
9+0	132.1	122.17 in	9.9	6+57.5	(4" stub S.E.) connected		157234		2342		1-12-54	
10+0	132.1	122.50 out	9.8		connected	connected			2322		10-16-75	
11+0	133.1	122.74 in	10.4	7+41.4	(4" stub NW)	7+88.8	#3747	#3746	2319	4747	1-13-53	1-13-53
12+0	134.2	122.98 out	11.2	8+02.2	(4" stub So. Connected)				4745 1/2			1-13-53
13+0	134.2	126.00 in	8.0		Y West	Y East			2307			1-13-53
14+0	136.4	126.40	10.0	8+66.2		8+93.8	#3740		2307			3-12-73
15+0	137.3	126.80	10.5		9+52.2	9+94.4	#4130		2307			
16+0	138.0	127.20	10.8	11+36.5	11+52.6	11+18.1	253784		2308		2-16-53	
17+0	138.8	127.35 out	11.5		11+93.3	11+65.3	#1038		2308		2-18-76	
18+0	139.1	129.60	9.5		12+48.0	12+39.7			2308		6-8-56	
19+0	139.9	130.00	9.9	13+08.5	(2-4" stubs N. & NW)				2308			
20+0	140.0	130.04	10.0						2308			
21+0	124.5	117.97	6.5	0+00 = 4+10.8 in Line #1	0+22.8	0+19.8			2308			
22+0	125.9	118.50	7.4		+73.9	+70.9			2308			
23+0	126.2	119.00	7.2		+81.0	+78.0			2308			
24+0	129.9	119.41 out	10.5	2+82.8	2+27.0	2+24.0	#6006		2308		7-30-53	
25+0	130.2	121.50	8.7		+92.6	+92.6	#1106		2308		8-2-54	
26+0	132.0	122.00	10.0		3+56.0	3+53.0	#1641	#1105	2308		6-3-54	
27+0	134.1	122.50	11.6		4+16.7	4+13.7	#1093	#1104	2308		6-3-54	
28+0	134.8	122.82 out	12.0	5+63.1	5+39.0	5+36.0	#1092	#1046	2308		6-1-54	9-20-54
29+0	134.8	125.82 in	9.0		+88.1	+85.1	#1091	#6837	2308		6-1-54	10-30-53
30+0	135.8	126.00	8.8		6+40.0	6+37.0	#3724	#3923	2308		3-25-53	1-29-53
31+0	135.8	126.50	9.3		+94.5	+91.5	#6032	#3922	2308		8-3-53	1-29-53
32+0	137.4	126.82	10.6	7+64.4	7+49.6	7+46.6	#6010	#3921	2308		11-2-53	1-29-53
33+0	131.0	118.80	12.2	0+00 = 5+62.8 in Line 1	Y West				2308			
34+0	129.3	119.00	10.3		1+02.5				2308			
35+0	128.0	119.06 out	8.9		1+31.2	Y North	Y South	#3966	4630		3-23-55	
36+0	128.0	119.26 in	8.6		2+06.5	2+03.5			2325			
37+0	127.2	119.57	7.6	2+84.5	(4" stub E.)	+58.6	+55.6	#3969	2325		2-2-53	
38+0	134.2	123.20	11.0	0+00 = 8+02.2 in Line #1	Connected	0+07.2		seal off	22635			1-21-71
39+0	133.4	123.40	10.0		Connected	+78.2		seal off	3745			1-13-53
40+0	132.4	123.52	10.9	1+50.9	Connected	+108.8		seal off	3743			1-21-71
41+0	136.6	132.50	4.1	0+00 Existing MH.	Y West	0+67.8	0+70.8		3741			11-14-53
42+0	136.7	132.60	4.1		Y East	1+04.1	1+01.1		3742			1-13-53
43+0	138.4	132.70	5.7			+52.8	+49.8		3741			3-12-73
44+0	139.9	132.80	7.1	2+94.3	(4" stub E.)	+53.5	+50.5	#4995	2209			4-28-53
45+0						2+87.2			2308			

Line #1

Line #2

Line #3

Line #4

Line #5

69050-10-6-76-1-2302 & Bellmore 11+11.5

C26696-4710-14-18-22 & Gammon - 8-20-71 - Top (1+66.0)

#6001 - top - 2322 S. Pershing - 7-30-53 - Reynolds Pkg. Co. #4434 - boundary - 2225 S. Bellmore - 1-18-54

#5997 - top - 2340 S. Pershing - 7-30-53 - Reynolds Pkg. Co. (1+10)

#5998 - top - 2336 S. Pershing - 7-30-53 - Reynolds Pkg. Co.

#5999 - top - 2330 S. Pershing - 7-30-53 - Reynolds Pkg. Co.

#6000 - top - 2326 S. Pershing - 7-30-53 - Reynolds Pkg. Co.

#6002 - top - 2341 S. Bellmore

#6003 - top - 2337 S. Bellmore

#6004 - top - 2331 S. Bellmore

#6005 - top - 2327 S. Bellmore

#4733 - top - 2341 S. Bellmore

#4734 - top - 2337 S. Bellmore

#4735 - top - 2331 S. Bellmore

#4736 - top - 2327 S. Bellmore

#4737 - top - 2323 S. Bellmore

#4738 - top - 2319 S. Bellmore

#4739 - top - 2315 S. Bellmore

#4740 - top - 2311 S. Bellmore

#4741 - top - 2307 S. Bellmore

#4742 - top - 2303 S. Bellmore

#4743 - top - 2299 S. Bellmore

#4744 - top - 2295 S. Bellmore

#4745 - top - 2291 S. Bellmore

#4746 - top - 2287 S. Bellmore

#4747 - top - 2283 S. Bellmore

#4748 - top - 2279 S. Bellmore

#4749 - top - 2275 S. Bellmore

#4750 - top - 2271 S. Bellmore

#4751 - top - 2267 S. Bellmore

#4752 - top - 2263 S. Bellmore

#4753 - top - 2259 S. Bellmore

#4754 - top - 2255 S. Bellmore

#4755 - top - 2251 S. Bellmore

#4756 - top - 2247 S. Bellmore

#4757 - top - 2243 S. Bellmore

#4758 - top - 2239 S. Bellmore

#4759 - top - 2235 S. Bellmore

#4760 - top - 2231 S. Bellmore

#4761 - top - 2227 S. Bellmore

#4762 - top - 2223 S. Bellmore

#4763 - top - 2219 S. Bellmore

#4764 - top - 2215 S. Bellmore

#4765 - top - 2211 S. Bellmore

#4766 - top - 2207 S. Bellmore

#4767 - top - 2203 S. Bellmore

#4768 - top - 2199 S. Bellmore

#4769 - top - 2195 S. Bellmore

#4770 - top - 2191 S. Bellmore

#4771 - top - 2187 S. Bellmore

#4772 - top - 2183 S. Bellmore

#4773 - top - 2179 S. Bellmore

#4774 - top - 2175 S. Bellmore

#4775 - top - 2171 S. Bellmore

#4776 - top - 2167 S. Bellmore

#4777 - top - 2163 S. Bellmore

#4778 - top - 2159 S. Bellmore

#4779 - top - 2155 S. Bellmore

#4780 - top - 2151 S. Bellmore

#4781 - top - 2147 S. Bellmore

#4782 - top - 2143 S. Bellmore

#4783 - top - 2139 S. Bellmore

#4784 - top - 2135 S. Bellmore

#4785 - top - 2131 S. Bellmore

#4786 - top - 2127 S. Bellmore

#4787 - top - 2123 S. Bellmore

#4788 - top - 2119 S. Bellmore

#4789 - top - 2115 S. Bellmore

#4790 - top - 2111 S. Bellmore

#4791 - top - 2107 S. Bellmore

#4792 - top - 2103 S. Bellmore

#4793 - top - 2099 S. Bellmore

#4794 - top - 2095 S. Bellmore

#4795 - top - 2091 S. Bellmore

#4796 - top - 2087 S. Bellmore

#4797 - top - 2083 S. Bellmore

#4798 - top - 2079 S. Bellmore

#4799 - top - 2075 S. Bellmore

#4800 - top - 2071 S. Bellmore