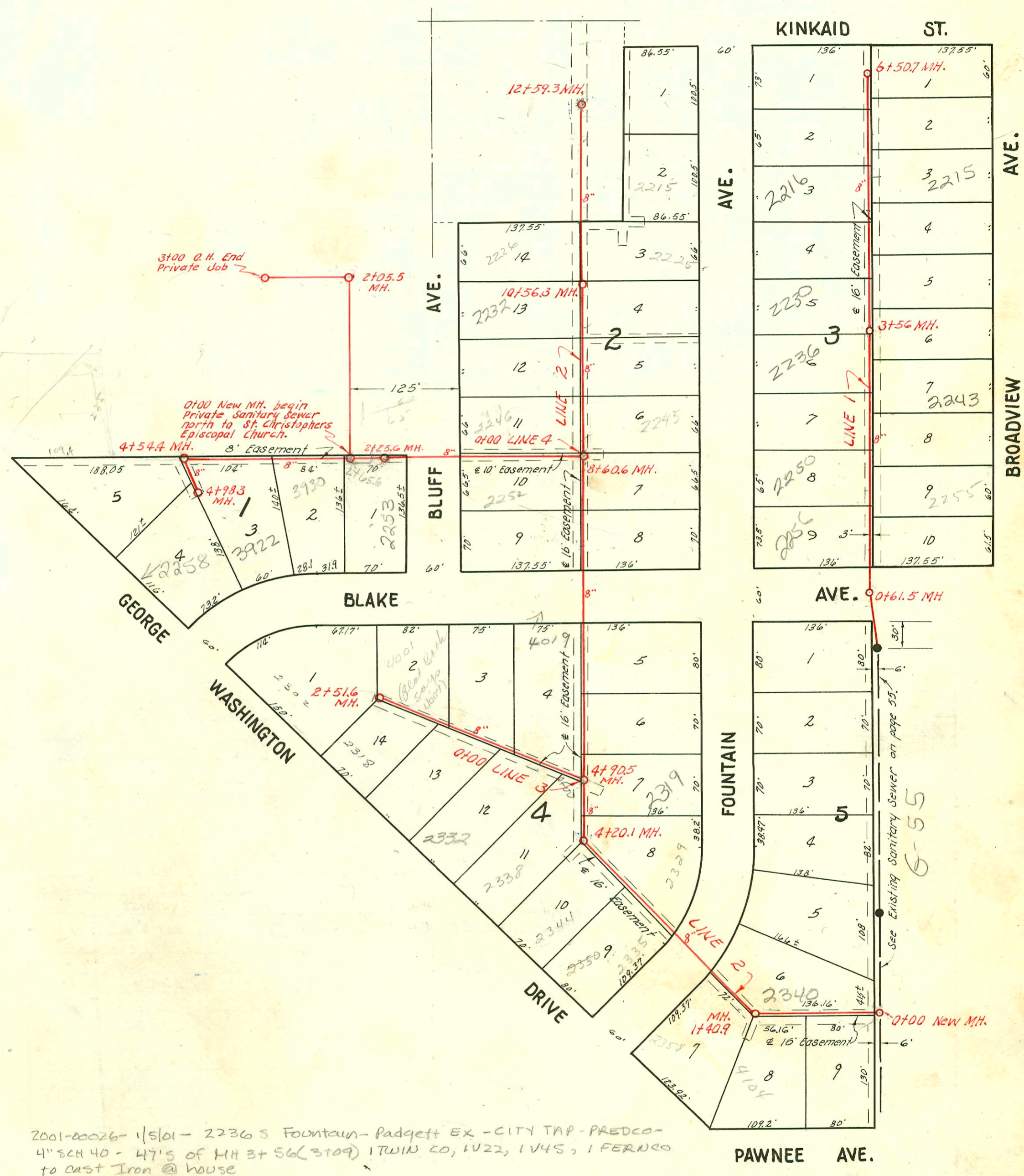


1=100



2001-20026-1/5/01- 2236 S Fountain- Padgett Ex - CITY TAP - PREDCO -
 4" SCH 40 - 47'5 of MH 3+56(3+09) ITWIN CO, 1V22, 1V45, 1 FERRO
 to cast Iron @ house

2000-02727-12/15/00- 2340 S Fountain - McClungs - 4" SCH 40 - 4" wye 66.3' W of MH 0+00(0+63.3) Replaced
 Entire Line - ITWIN CO, 1V22

LAT. 2, SUB. 6, W.I.S.
W. B. CARTER — JAN. 1953
BK. # JT. 58, PROJ. NO. C22-77

CONSTRUCTION RECORD

SERVICE RECORD

LINE NO.

STATION	ELEVATION		Depth	MANHOLE	4-INCH "Y" BRANCHES		No. of Permit		House Number		DATE OF PERMITS	
	Ground	Grade			North West	South East	North West	South East	North West	South East	North West	South East
#1 0+00	130.9	122.00	8.9	0+00 Existing M.H.								
	131.9	122.37	9.7									
1+0	132.0	122.50	9.5	0+61.5								
2+0	132.6	122.80	9.8									
3+0	134.1	123.10	11.0									
4+0	134.7	123.27	11.4	3+56.0								
	135.3	123.40	11.9									
5+0	136.1	123.70	12.4									
6+0	136.8	124.00	12.8									
	137.0	124.15	12.8	6+50.7								
#2 0+00	124.0	116.00	8.0	0+00 New M.H.	Y North	Y South						
1+00	124.0	116.30	7.7									
2+0	124.8	116.80	8.0									
3+0	127.0	117.10	9.9									
4+0	128.2	117.40	10.8									
5+0	130.1	118.57	11.5	4+90.5								
6+0	132.1	119.00	13.1									
7+0	132.3	119.30	13.0									
8+0	132.7	119.60	13.1									
9+0	132.9	122.90	10.0									
10+0	133.1	123.20	9.9									
11+0	133.7	123.50	10.2									
12+0	133.7	123.80	9.9									
	133.9	124.01	9.9	12+59.3								
#3 0+00	130.0	120.01	10.0	0+00 = 4+90.5 in Line #2	Y North	Y South						
1+0	130.5	120.30	10.2									
2+0	130.9	120.60	10.3									
	130.8	120.75	10.0	2+51.6								
#4 0+00	132.8	120.02	12.8	0+00 = 8+60.6 in Line #2	Y North	Y South						
1+0	132.4	120.30	12.1									
2+0	132.1	120.60	11.5									
	131.9	120.68	11.2	2+25.6								
3+0	131.5	120.90	10.6									
4+0	130.9	121.20	9.7									
	130.3	121.56	8.9	4+54.4								
	130.7	121.70	9.0	4+98.3								
0+0	132.0	121.20	10.8	0+00 New M.H.								
1+0	131.8	121.30	10.5									
2+0	131.0	121.51	9.6									
3+0	129.5	121.60	7.9	3+00 O.H.								

St. Christopher Episcopal Church Private Sanitary Sewer. Dk. 7.65, 11-17-53

#5584 - 2252 S. Bluff - 6-17-53 - Baker Bluff (8+22.6) 95-9971-7 6-30-95 2253 S. Bluff City Wye Dept
 #4923 - 2238 S. Bluff - 4-14-53 - Baker Bluff
 #6204 - 2335 S. Bluff - 9-18-53 - Baker Bluff
 #7276 - 4110 E. Pawnee - 12-28-53 - Baker Bluff
 #3829 - 2215 S. Bluff - 3-7-55 - Baker Bluff
 #5663 - 2235 S. Bluff - 9-19-55 - Baker Bluff