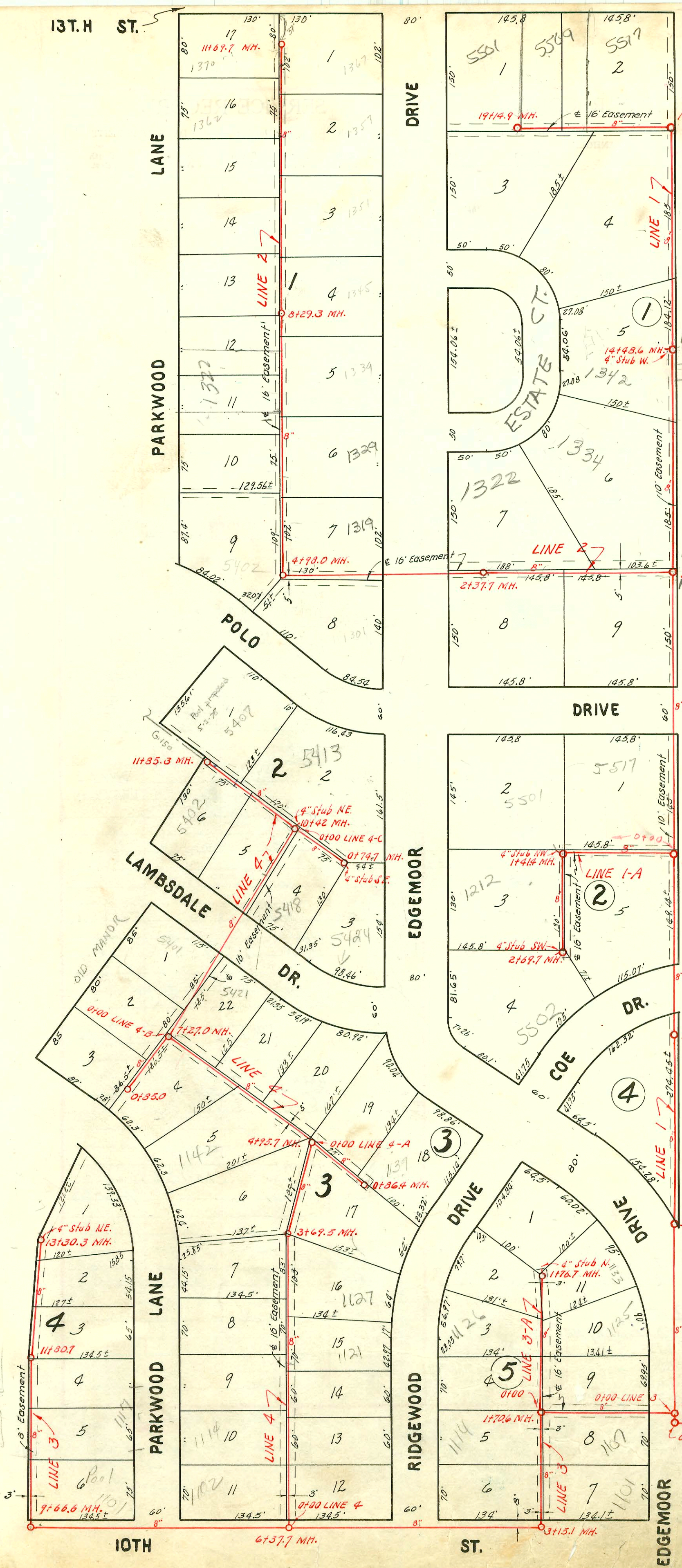


13T.H ST.

G. 123A



Scale 1"=100'

LAT. 27, D.C.S.# 2, S.S.# 12  
 W. B. CARTER - FEB. 1953  
 BK. NO. JT. 61, PROJ.# C22-85

2-26-53

NOTE:  
 See Construction record for  
 this project on pages 123 & 124.

2001-01208-7/19/01-  
 1370 N Parkwood W-  
 Wichita Exc- 4"sch40  
 2-kickouts- TWIN CO  
 (Replaced N 20) 1-W4E  
 1H45 Predco 29'S of  
 DE MH 11+69.7 (11+40.7)

2003-02084-01/03-1101 Edgemoor  
 Clearwater Exc- City main repair  
 4" Predco 12'S of MH 11+70.6 (11+82.6)  
 Replace 20' pipe, 1V22

2002-01811 6/28/02  
 1329 Edgemoor  
 Rob Rooters- Pipe  
 burst repl- 4" PE  
 SDR17- Repaired  
 40' of 2nd Kickout  
 TWIN CO  
 Scale 1"=100'  
 2003-00062-1/1/03  
 1319 Edgemoor - Budget  
 city wire repair 69' E  
 of MH 4+98(4+82)  
 4"40 PVC- TWIN CO,  
 1V45.2 V22  
 2002-01497 5/28/02  
 1322 N Estate Ct  
 RD Campbell- twin  
 co, 44' E of MH  
 2+37.4 (1+93.7)  
 Predco Saddle, 1H22,  
 4"sch40, 14" fall

Old Manor

Peter

1309 Pool  
Perth

1305  
Perth

1301  
Perth

1176.5 MH.  
Kotoo Line 2

8+11.4 MH.

5+72.5 MH.

3+35.4 MH.

0+95.8 MH.  
0+85 MH.  
0+00 Existing MH.

11+70.6 MH.  
11+70.6 MH.

3+15.1 MH.

6+37.7 MH.

9+66.6 MH.  
134.5±

11+80.7 MH.

13130.3 MH.

4+35.0 MH.

11+27.0 MH.

11+85.3 MH.

4+98.0 MH.

8+29.3 MH.

14+48.6 MH.  
4" Stub W.

19+14.9 MH.

17+20.0 MH.

145.8

145.8

145.8

145.8

145.8

145.8

145.8

145.8

145.8

145.8

145.8

145.8

145.8

145.8

145.8

145.8

145.8

145.8

145.8

145.8

145.8

145.8

145.8

145.8

145.8

145.8

145.8

145.8

145.8

145.8

145.8

145.8

145.8

145.8

145.8

145.8

145.8

145.8

145.8

145.8

145.8

145.8

145.8

145.8

145.8

145.8

145.8

145.8

145.8

145.8

145.8

145.8

145.8

145.8

145.8

145.8

145.8

145.8

145.8

145.8

145.8

145.8

145.8

145.8

145.8

145.8

145.8

145.8

145.8

145.8

145.8

145.8

145.8

145.8

145.8

145.8

145.8

145.8

145.8

145.8

145.8

145.8

145.8

145.8

145.8

145.8

145.8

145.8

145.8

145.8

145.8

145.8

145.8

145.8

145.8

145.8

145.8

145.8

145.8

145.8

145.8

145.8

145.8

145.8

145.8

145.8

145.8

145.8

145.8

145.8

145.8

145.8

145.8

145.8

145.8

145.8

145.8

145.8

145.8

145.8

145.8

145.8

145.8

145.8

145.8

145.8

145.8

145.8

145.8

145.8

145.8

145.8

145.8

145.8

145.8

145.8

145.8

145.8

145.8

145.8

145.8

145.8

145.8

145.8

145.8

145.8

145.8

145.8

145.8

145.8

145.8

145.8

145.8

145.8

145.8

145.8

145.8

145.8

145.8

145.8

145.8

145.8

145.8

145.8

145.8

145.8

145.8

145.8

145.8

145.8

145.8

145.8

145.8

145.8

145.8

145.8

145.8

145.8

145.8

145.8

145.8

145.8

145.8

145.8

145.8

145.8

145.8

145.8

145.8

145.8

145.8

145.8

145.8

145.8

145.8

145.8

145.8

145.8

145.8

145.8

145.8

145.8

145.8

145.8

145.8

145.8

145.8

145.8

145.8

145.8

145.8

145.8

145.8

145.8

145.8

145.8

145.8

145.8

145.8

145.8

145.8

145.8

145.8

145.8

145.8

145.8

145.8

145.8

145.8

145.8

145.8

145.8

145.8

145.8

145.8

145.8

145.8

145.8

145.8

