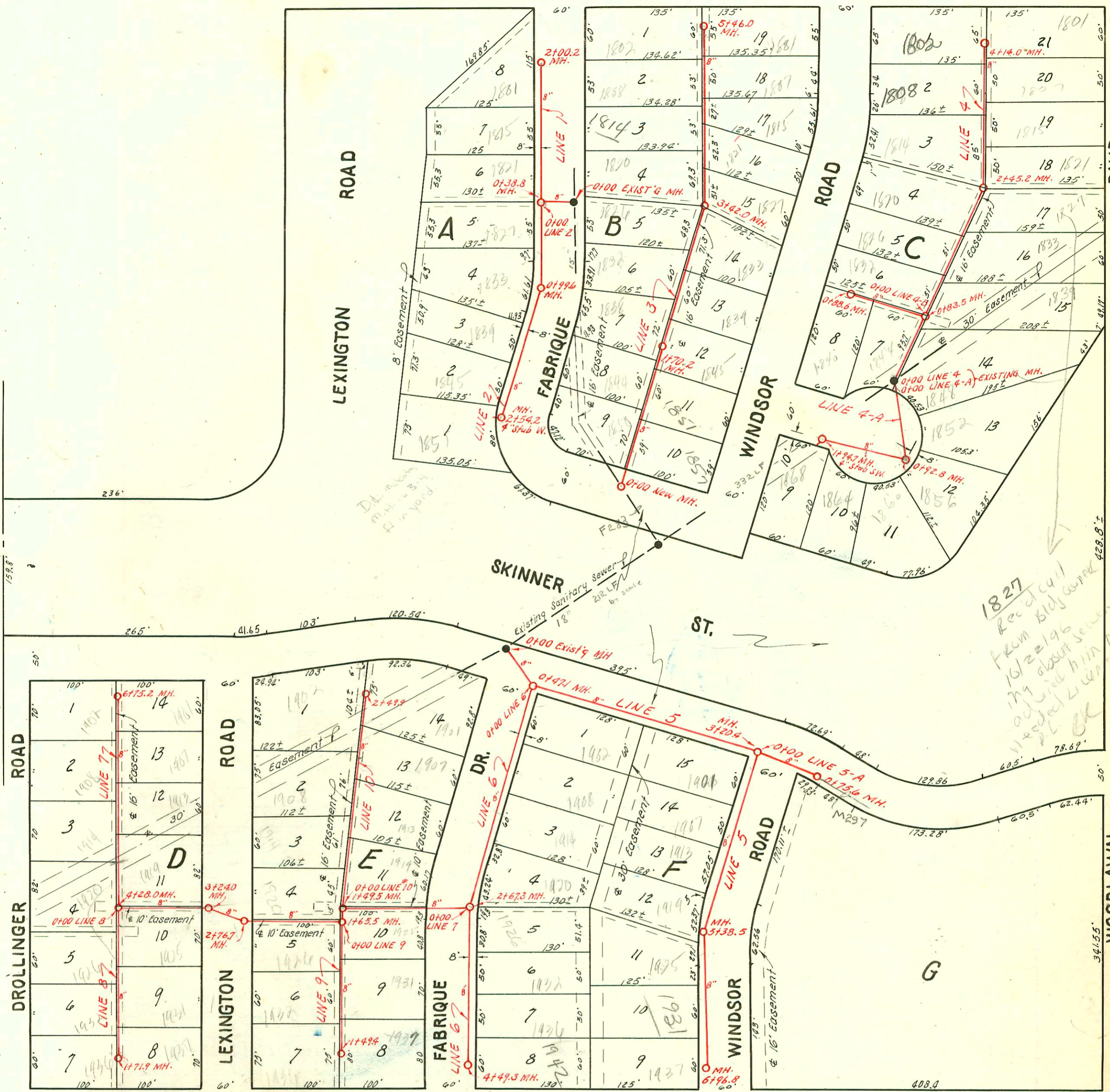


copy of south  
page  
to 545  
12-22-54

1=100

FUNSTON

ST.



MT. VERNON

ROAD

2002-00293-21102-1808 S Windsor- Wichita Exc- 70' S of MH 4114 (3144) TWIN CO, 4" SCH 40 PK, 4" fall  
 1V45 Predco  
 2002-00796-3/20/02-1802 S Windsor- Wichita Exc- 71'45', Replaced 3' low end 4" SCH 40 PK

NOTE: Construction Record for this project is shown on page 125 & 126.

035781-6201-03 E Mt. Vernon Robert MacGregor - 6" line - Bank Dept  
 2001-00601-3/20/01-1826 S Windsor- Wichita Exc- 4" SCH 40 - wye connection 61' NE of MH 0183.5 (1744.5)  
 tied to wye with donut TWIN CO

2001-01440-6/12/01-1840 S Windsor- Ark Valley- 4" SCH 40 2 Fernco Replaced 6' of pipe

**LAT. 3, WAR INDUSTRIES SEWER**

W. B. CARTER — MARCH, 1953

BK. No. JT. 63 — PROJ. No. C22-91

CONSTRUCTION RECORD

SERVICE RECORD

LINE NO.	STATION	ELEVATION		Depth	MANHOLE	4-INCH "Y" BRANCHES		No. of Permit		House Number		DATE OF PERMITS	
		Ground	Grade			North West	South East	North West	South East	North West	South East	North West	South East
1.	0+0	126.8	116.30	10.5	Exist'g MH.								
		126.5	116.45 out	10.0	0+00								
	1+0	126.4	116.65 in	9.8	0+38.8	0+65.5			#3155	1815		1-12-55	
				9.5		1+11.7			#3154	1801	FABRIQUE	1-12-55	
	2+0	126.7	117.30	9.4									
					2+00.2								
2.	0+0	126.4	116.63	9.8	0+00 = 0+38.8 in Line 1	0+23.0							
				9.0	0+99.6	+81.6							
	1+0	126.1	117.05	9.0		1+39.5			#3159	1839		1-12-55	
						+85.6			5780	1845 R		1-12-55	
	2+0	123.4	117.45	6.0					3160				
		124.1	117.66	6.4	2+54.2	(4" stub West)			951918-7	1851 R		2-23-55	
									73703	FABRIQUE			
3.	0+0	125.5	115.52	10.0	0+00 New MH.	0+52.3	0+49.3						
	1+0	126.3	115.92	10.4		1+08.6	1+05.6		#4238	1844	1851	2-26-53	2-26-53
							+66.0		#4245	FABRIQUE	WINDSOR		2-26-53
		127.1	116.20	10.9	1+70.3	1+75.4			#4239	1838		2-26-53	
	2+0	127.2	116.32	10.9			2+23.0		#4244	1839	WINDSOR		2-26-53
							2+56.9		#4236	1832	FABRIQUE		2-26-53
							2+83.9		#4243	1833	WINDSOR		2-26-53
	3+0	127.8	116.72	11.1		3+18.6			#4235	1826	FABRIQUE		2-26-53
		128.0	116.89	11.1	3+42.0	3+52.1			#4242	1827	WINDSOR		2-26-53
						3+69.3			#4234	1820	FABRIQUE		2-26-53
	4+0	127.8	117.12	10.7		4+02.6			#4241	1821	WINDSOR		2-26-53
						4+27.0			#4233	1814	FABRIQUE		2-26-53
						4+53.3		#4240	1815	WINDSOR		2-26-53	
					4+74.7			#4232	1808	FABRIQUE		2-26-53	
						4+86.7		#4239	1807	WINDSOR		2-26-53	
5+0	127.5	117.52	10.0		5+37.5	5+40.5		#3164	1801	WINDSOR			
	127.7	117.70	10.0	5+46.0									
4.	0+0	127.8	115.73	12.1	0+00 Existing MH.								
		128.3	116.05 out	12.2									
	1+0	127.6	119.05 in	9.2	0+83.5	1+06.6	1+09.6		#5307	1852	1839 N	5-22-53	2-22-72
				8.5		1+44.5	1+41.5		4392	1826 R	1833 N	3-20-01	2-22-72
						+96.2	+93.2		#4376	1829	1827 R	3-7-53	6-17-53
2+0	127.7	119.53	8.2		2+56.0	2+53.0		#4385	1814	1821	3-7-53	6-17-53	
	128.9	119.71	9.2	2+45.2	3+07.6			#5308	1815	WINDSOR		5-22-53	
3+0	129.2	119.93	9.3		3+43.7			#781	1808 RR	See next pg	4-27-54	5-22-53	
						3+55.2		#6923	1807 B	1807 B	3-20-02	4-20-07	
4+0	129.7	120.33	9.4		4+05.1	4+02.1		#3704	1802 R	1801	3-23-55	11-12-53	
	129.9	120.39	9.5	4+14.0									
4-A	0+0	127.8	115.73	12.1	0+00 Existing MH.	Y-N.E.	0+08.8						
				10.9		0+63.9							
	1+0	127.0	116.14 out	10.7	0+92.8	(4" stub South)			1260	1856	WINDSOR CT	7-1-58	
		116.34 in			Y-South								
					1+15.8			9658907		1864 R		4-25-46	
					1+38.8			1260		WINDSOR CT		7-1-58	
	126.2	116.78	9.4	1+94.7	(4" stub S.W.)			9570467		1868 R		7-11-95	
								957175		WINDSOR CT		10-6-67	
4-B	0+0	127.0	116.23	10.8	0+00 = 0+92.8 in Line 4	Y-South	0+17.2		#4378	1844		3-17-53	
				10.4	0+88.6		0+80.7		2001-01440	1840	see next pg	6-12-01	
	127.0	116.61	10.4					#6430	WINDSOR		9-14-53		
5.	0+0	127.0	113.00	14.0	Existing MH.	Y West	Y East						
		127.0	113.20 out	13.8	0+00								
		127.0	113.93 in	11.1	0+47.1								
	1+0	128.2	116.14	12.1									
	2+0	130.7	116.54	14.2									
3+0	132.0	116.94	15.1										
	132.9	117.00 out	15.9										
		120.87 in	12.4	3+20.4									

NOTE: Construction for project continues on page 126

#5106 - Top - 1931 Windsor Ct - 5-5-53 - Richard Le Jay, 967052 Top 1860 Windsor Windsor 5-27-58  
 #5092 - Top - 1913 Fabrique - 5-5-53 - Richard Le Jay, 967059 Top 1852 Windsor Windsor 7-1-54  
 #3162 - Top - 1857 Windsor - 1-14-55 - Norme Pelly  
 #3161 - Top - 1850 Fabrique - 1-14-55 - Norme Pelly  
 #3163 - 1852 Fabrique Top - 1-14-55 - Norme Pelly  
 #3151 - 1807 Fabrique - Top - 1-12-55 - Norme Pelly  
 #3156 - 1821 Fabrique Top - 1-12-55 - Norme Pelly  
 #3158 - 1833 Windsor - Top - 1-12-55 - Norme Pelly