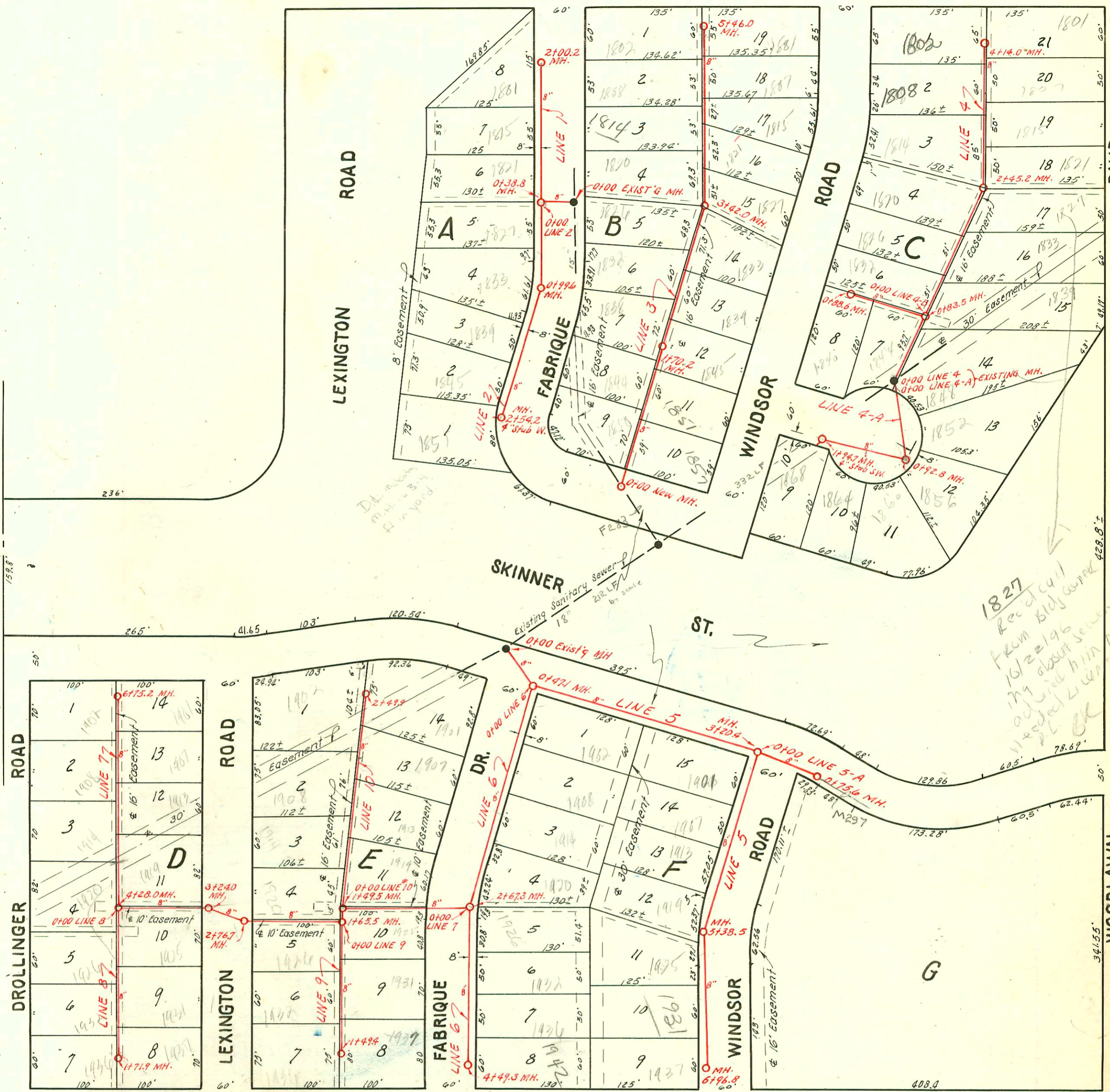


copy of south
page
to 545
12-22-54

1" = 100'

FUNSTON

ST.



MT. VERNON

ROAD

2002-00293-21102-1808 S Windsor- Wichita Exc- 70' S of MH 4114 (3144) TWIN CO, 4" SCH 40 PK, 4" fall
 1V45 Predco
 2002-00796-3/20/02-1802 S Windsor- Wichita Exc- 71'45", Replaced 3' low end 4" SCH 40 PK

NOTE: Construction Record for this project is shown on page 125 & 126.

035781-6201-03 E Mt. Vernon Robert MacGregor - 6" line - Bank Dept
 2001-00601-3/20/01-1826 S Windsor- Wichita Exc- 4" SCH 40 - wye connection 61' NE of MH 0183.5 (1744.5)
 tied to wye with donut TWIN CO

2001-01440-6/12/01-1840 S Windsor- Ark Valley- 4" SCH 40 2 Fernco Replaced 6' of pipe

LAT. 3, WAR INDUSTRIES SEWER

W. B. CARTER — MARCH, 1953

BK. No. JT. 63 — PROJ. No. C22-91

CONSTRUCTION RECORD

SERVICE RECORD

STATION	ELEVATION		Depth	MANHOLE	4-INCH "Y" BRANCHES		No. of Permit		House Number		DATE OF PERMITS	
	Ground	Grade			North West	South East	North West	South East	North West	South East	North West	South East
						3+46.2						
4+0	132.0	120.79	11.2			4+05.6		#5102	1907 B			5-5-53
						+56.5		#5163	1913			5-5-53
5+0	129.4	121.19	8.2			5+13.0		#5104	1919			5-5-53
						5+38.5		#5631	1925 R			5-5-53
6+0	128.0	121.59	6.4			6+12.3		2862	1931			3-16-81
						6+75.4		2857	1931/36	Windser		3-16-81
	129.5	121.99	7.5	6+96.8								
0+0	132.9	121.20	11.7	0+00 = 3+204								
	130.6	121.30	9.3	in Line 5								
0+0	127.0	117.21	9.8	0+00 = 0+		Y - East						
				in Line 5		0+28.0						
1+0	121.1	117.40	3.7			+87.7						
2+0	126.4	117.60	8.8			1+49.0						
	127.2	117.73	9.5			2+09.1						
		119.63	7.6			2+67.3						
3+0	127.5	119.70	7.8			2+83.8						
						3+34.6						
4+0	127.8	119.90	7.9			4+31.1						
	128.1	120.00	8.1			4+49.3						
0+0	127.2	118.00	9.2	0+00 = 2+67.3								
				in Line 6								
1+0	126.9	118.20	8.7									
	126.8	118.30	8.5									
	126.8	118.50	8.3									
	126.8	118.53	8.3									
		118.73	8.1									
2+0	126.7	118.80	7.9									
	126.2	118.95	7.3									
3+0												
4+0	126.1	119.05	7.0									
	125.7	119.20	6.5			Y - West	Y - East					
	125.6	119.27	6.3			4+28.0	4+50.0					
						4+82.5						
5+0	125.9	119.60	6.3			5+32.1						
						5+40.7						
						5+88.3						
6+0	126.9	119.80	7.1			5+93.1						
						6+58.8						
						6+63.8						
	127.5	119.94	7.6			6+75.2						
0+0	125.6	119.44	6.2	0+00 = 4+28.0								
				in Line 7								
1+0	125.4	119.65	5.8			0+47.2	0+36.5					
						1+19.3	1+16.3					
	125.1	119.79	5.3			1+63.2	1+66.2					
						1+71.9						
0+0	126.8	118.80	8.0	0+00 = 1+65.5		0+13.5	0+25.0					
				in Line 7		0+10.5	0+10.5					
						+81.2	+78.2					
1+0	126.6	119.00	7.6			1+44.3	1+41.3					
	126.6	119.10	7.5			1+49.4						
0+0	126.8	118.80	8.0	0+00 = 149.5		0+12.0	0+09.0					
				in Line 7		+61.9						
1+0	126.6	119.00	7.6			1+20.9	1+06.0					
						1+74.4						
2+0	126.7	119.20	7.5			2+42.6	2+39.6					
	129.5	119.30	10.2			2+49.9						

5 Continued

5-A

6

7

8

9

10

2858 - Jap - 1937 Windsor - Home - 12-6-54 (6+89.8) 19329-1914 S. Fabrique - 10-14-87 (Jap 1+69)

2859 - Jap - 1701 Windsor - Home - 12-6-54

2860 - Jap - 1902 Fabrique - Home - 12-6-54

2858 - Jap - 1942 Fabrique - Home - 12-8-54

2853 - 6-8 ave - 1901 Fabrique - Home - 12-5-54 - see above

2852 - 4-8 ave 1902 Brington - Home - 12-8-54

#/

2001-01151-5/10/01-1932 S Fabrique - Wichita Exc - 4" SCH 40 - Donut 3' from main - Fernco to CI@house
2001-01874-7/31/01-1936 S Fabrique - Wichita Exc - 4" SCH 40 - 4" WYE 64.7' N of MH 449.3 (3+84.6) Replace entire line

2001-00477-3/6/01-1931 S Fabrique - 4" SCH 40 Donut 71.2' N (on msmt) ITWINCO, 1V22, 1 Fernco to CI@house

2001-01119-5/10/01-1901 S Fabrique - Wichita Exc - 4" SCH 40 Donut 30' S of MH 2749(2719) 1V22, 1V45