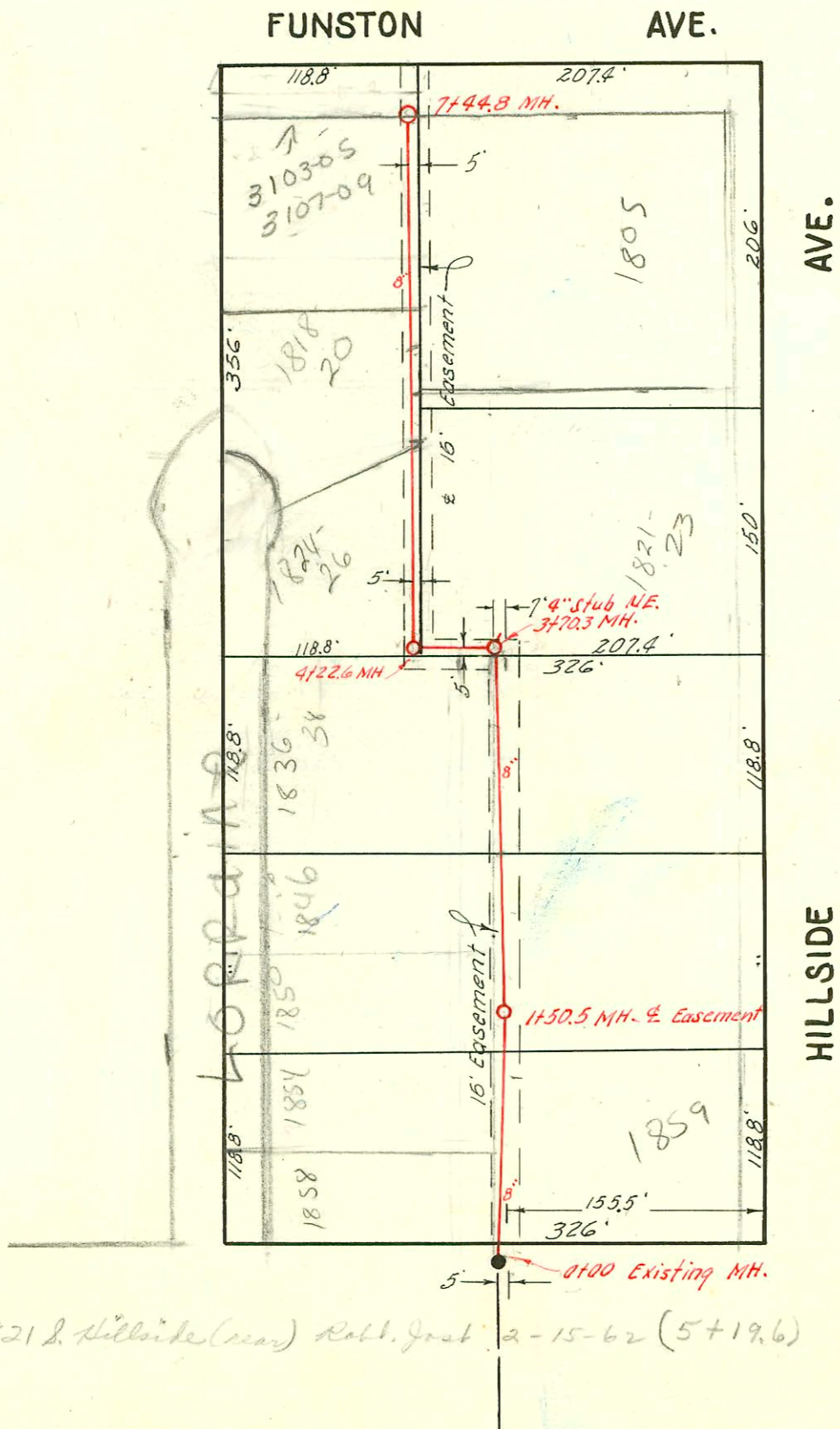


LAT. 11, SUB. 3, W. 1. S.
W. B. CARTER, MARCH, 1953
BK. JT. 66, PROJ. NO. C22-93
3-12-53



LAT. 26, D.C.S. 2, S. S. 12
W. B. CARTER - MARCH, 1953
BK. JT. 67, - PROJ. NO. C22-81
3-12-53

CONSTRUCTION RECORD						SERVICE RECORD						
STATION	ELEVATION		Depth	MANHOLE	4-INCH "Y" BRANCHES		No. of Permit		House Number		DATE OF PERMITS	
	Ground	Grade			North West	South East	North West	South East	North West	South East	North West	South East
0+0	164.5	153.37	11.1	0+00 Exist'g MH.								
1+0	165.0 166.1	153.77 154.07 Out 156.07 in	11.2 12.0 10.0	1+76.7	0+87.8 1+47.9	0+84.8 1+44.9	#13084 #5210 #3717	#912527 #6027 #5247 #12512 #2348	554 555 549	549	7-25-57 5-17-53 4-10-53	9-25-57 5-18-53 5-78-53
2+0	166.4	156.17	10.2		2+05.7 +70.8	2+02.7 2+67.8	#4976 #6773	#5652 #23454 #5153 #21561 #5634	542 543 (R) 537 (R) 531		4-13-53 10-21-53	6-25-53 6-30-53 6-26-53
3+0	166.9 167.3	156.57 156.78	10.3 10.5	3+53.7	3+31.5	3+28.5						
0+0	101.8	95.00	6.8	0+00 Exist'g MH.	0+35.0 0+82.4		#2840 #2003-02553 #2841	1858 1854 R S. Lorraine			12-3-54 10/21/53 12-3-54	
1+0	102.7	95.10	7.6		1+41.0	1+11.8 +38.0		#4318	1859 S. Hillside			3-2-53
	103.0	95.15	7.8	1+50.5	1+95.7		#B03	5 Lorraine			8-23-54	
2+0	103.6	95.20	8.4		2+75.5	2+22.0		#4320	1855 S. Hillside			3-2-53
3+0	104.0	95.30	8.7		3+29.5 3+70.3 4+22.6	3+11.0 (4" stub NE.) 4+37.0		#4319	1835 S. Hillside			3-2-53
	104.7 104.8	95.38 Out 95.57 in 95.62 Out 95.82 in	9.3 9.1 9.2 9.0	4+96.1								
5+0	105.6	95.90	9.7		5+59.2	5+45.0		#4439	1821 S. Hillside			3-13-53
6+0	106.1	96.00	10.1		6+25.5 +80.3	5+92.0						
7+0	107.2 107.0	96.10 96.15	11.1 10.8	7+44.8	6+89.0		#8044 #13950 #24412 #28227 #13957	No 2 Hillside 1805 S. Hillside 1805 S. Hillside			3-13-61 3-13-53 3-13-61	
							#4384 C5209	3107-59 E. Sumner 3103-55 E. Sumner			8-11-67 10-10-67	

24942 = no record of measurements
 # B4607 - Top - 1818-24 S. Lorraine - McCullough - R 3-16-90
 # B4606 - Top - 1822-24 S. Lorraine - McCullough - R 11-22-65 (4+69.5)
 # 6287 - Top - 530-32 S. Lorraine - McCullough - R 11-22-65 (4+68.1)
 # 481 - Top into private line - 5805 E. Kellogg - 3-31-54 - Art Orsner
 # 6994 - Top - 1840-42 S. Lorraine - Arthur Ray - 12-5-55
 # 6997 - Top - 1836-38 S. Lorraine - Arthur Ray - 12-6-55
 # 1216 - set 6" x 8" pipe - 1846 S. Lorraine - Haubling Bldg. Co. - 6-22-56